

*for lease*  
**14 CHURCH**

**BERCZY PLACE | ST. LAWRENCE NEIGHBOURHOOD, TORONTO**

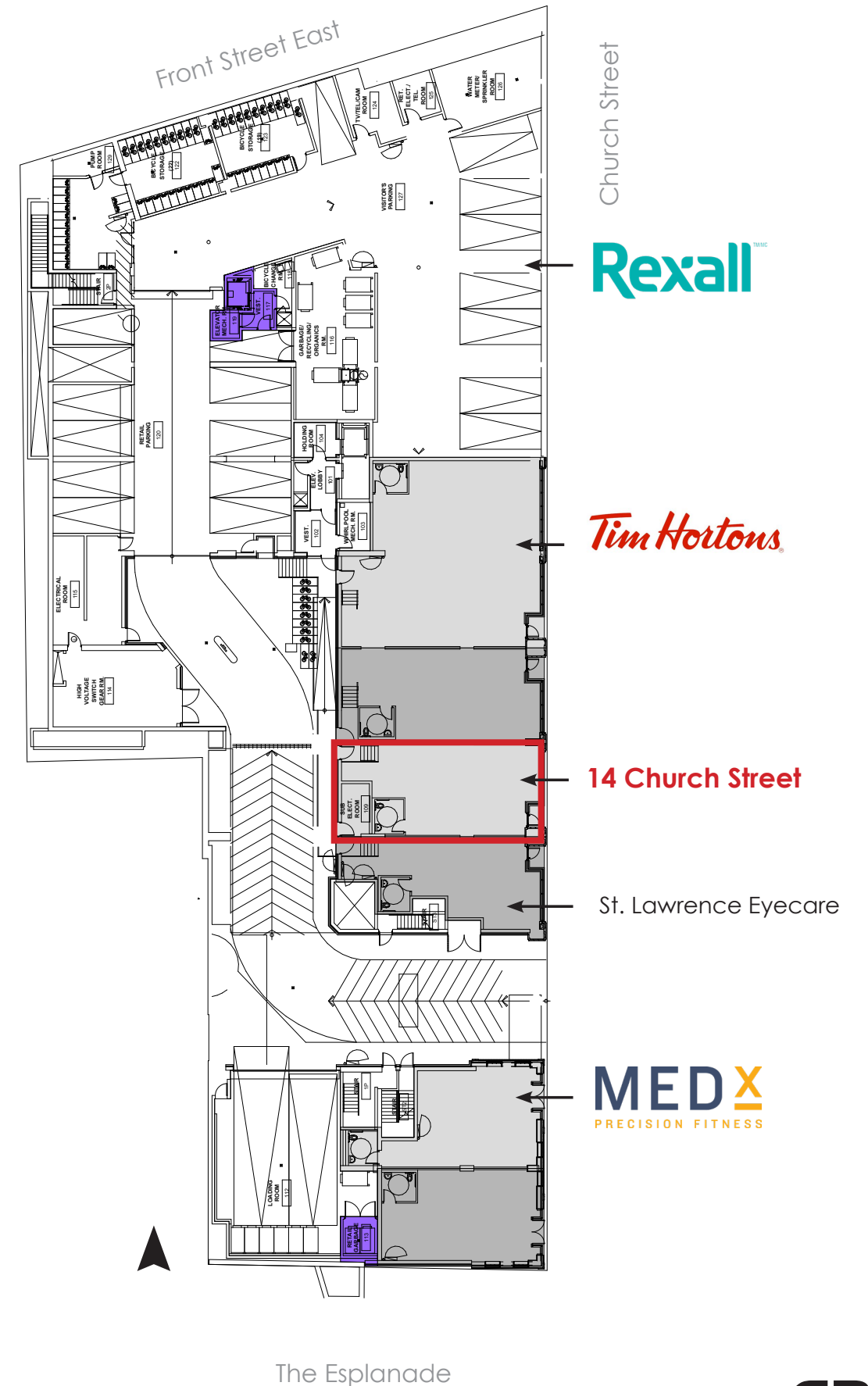


**CBRE**

# 14 CHURCH STREET

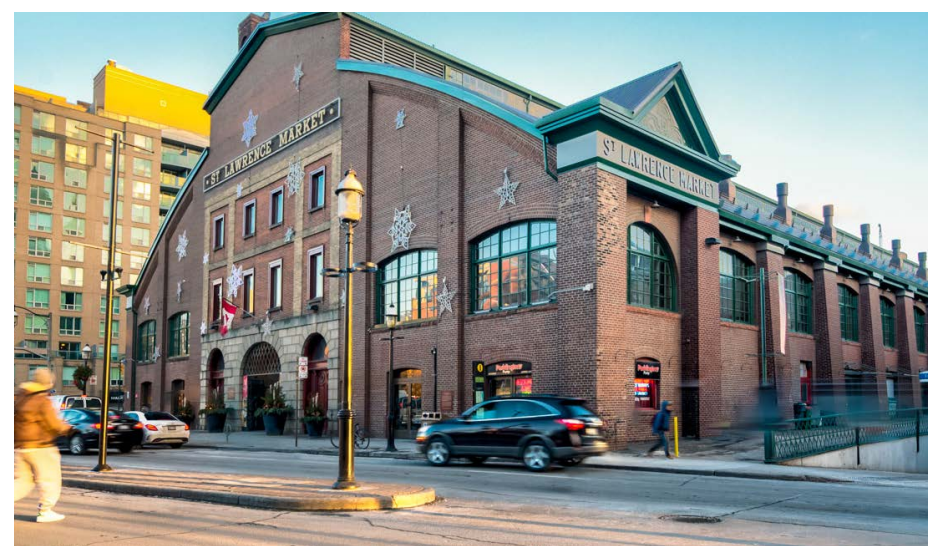
**Size:** 990 sq. ft.  
**Net Rent:** \$5,000/month  
**TMI:** \$36.14 per sq. ft.  
**Available:** Immediately

- Steps from both The Financial Core and St Lawrence Market
- Base of the heritage preserved Berczy Place, with over 160 residential units
- Co-tenants include Tim Hortons & Rexall
- Parking available



# THE LOCATION

Where the Financial Core Meets the St. Lawrence Market





## CONTACT

**Arlin Markowitz\***  
Executive Vice President  
416 815 2374  
arlin.markowitz@cbre.com

**Alex Edmison\***  
Senior Vice President  
416 874 7266  
alex.edmison@cbre.com

**Jackson Turner\*\***  
Senior Vice President  
416 815 2394  
jackson.turner@cbre.com

**Teddy Taggart\***  
Vice President  
416 847 3254  
teddy.taggart@cbre.com

**Emily Everett\***  
Sales Representative  
647 943 4185  
emily.everett@cbre.com

\*Sales Representative

\*\*Broker

This disclaimer shall apply to CBRE Limited, and to all divisions of the Corporation ("CBRE"). The information set out herein (the "Information") has not been verified by CBRE, and CBRE does not represent, warrant or guarantee the accuracy, correctness and completeness of the Information. CBRE does not accept or assume any responsibility or liability, direct or consequential, for the Information or the recipient's reliance upon the Information. The recipient of the Information should take such steps as the recipient may deem necessary to verify the Information prior to placing any reliance upon the Information. The Information may change and any property described in the Information may be withdrawn from the market at any time without notice or obligation to the recipient from CBRE.