

485-489
WELLINGTON

STREET WEST, TORONTO, ON



RETAIL/OFFICE FOR LEASE IN THE HEART OF DOWNTOWN TORONTO

CBRE



485-489 Wellington Street West

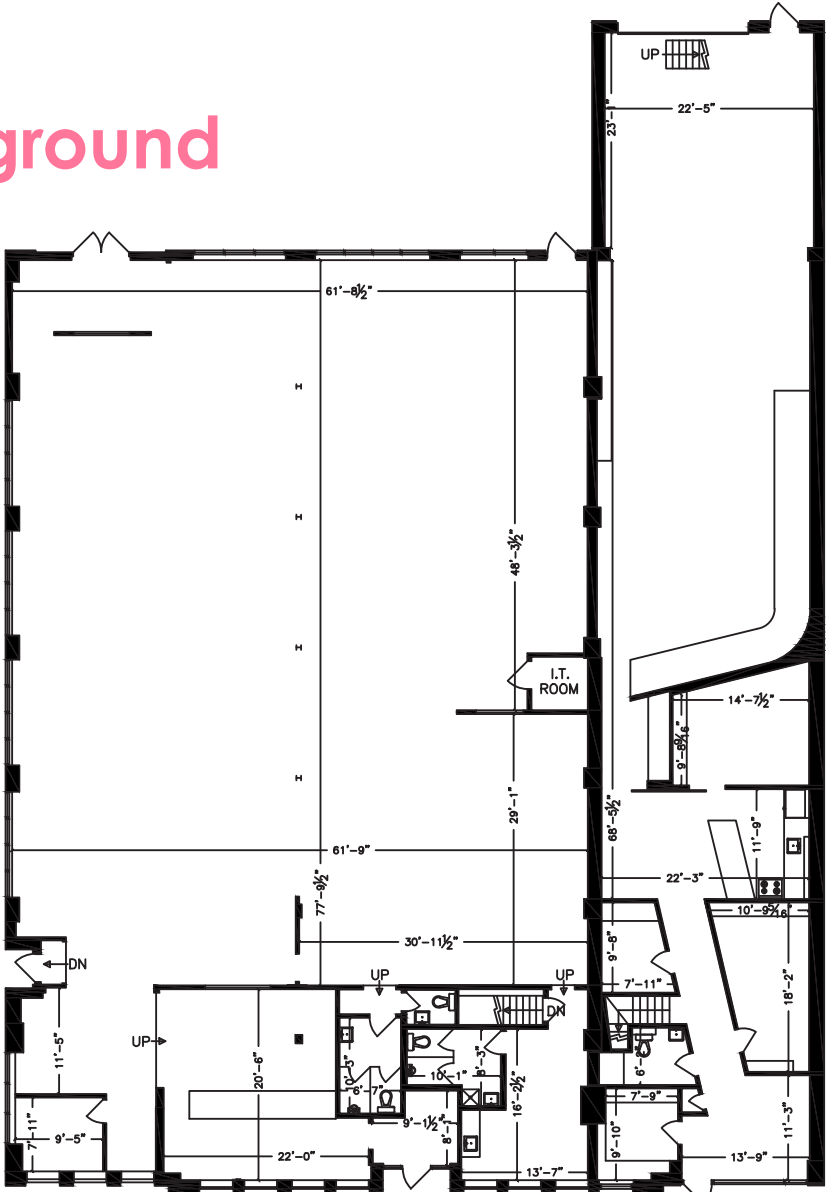
SIZE:	9,439 sq. ft.
AVAILABLE:	Immediately
NET RENT:	Please call listing agent
TMI:	\$22.00 per sq. ft.

- Ample surface parking (approx. 15 spots in the front and an additional 5 in rear)
- 14 ft. ceiling heights (approx.)
- Includes finished basement
- Patio potential



CBRE

ground



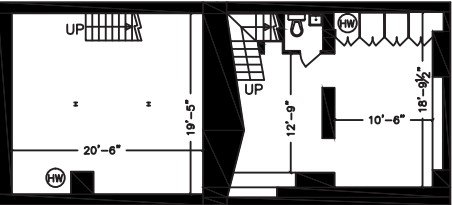
FIRST FLOOR
GROSS AREA: 9,439 SF

TENANT 1: 6,343 SF

TENANT 2: 3,096 SF

WELLINGTON ST W

basement

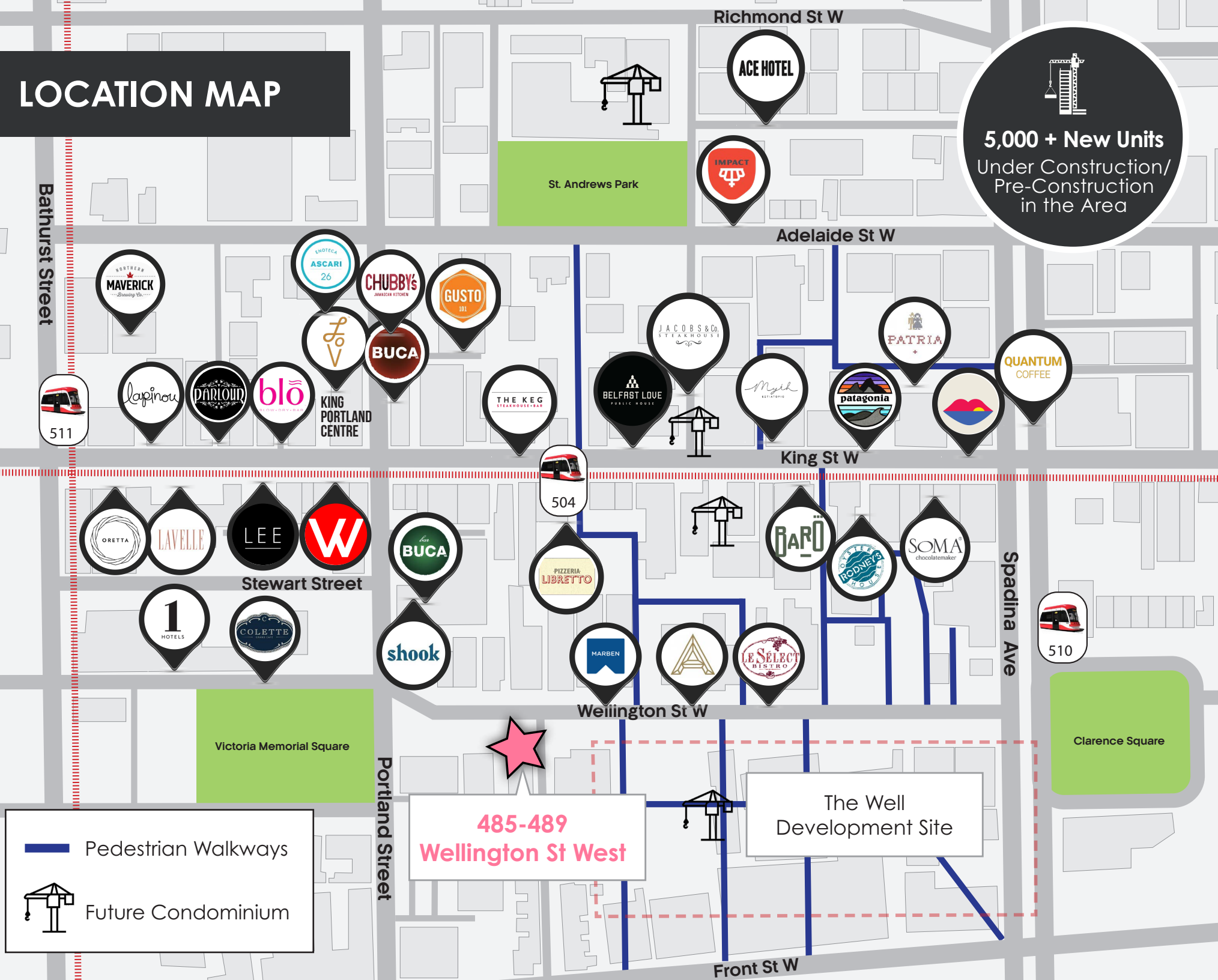


TENANT 1: 511 SF

TENANT 2: 544 SF

LOWER LEVEL
GROSS AREA: 1,051 SF

LOCATION MAP



The Well Development Site



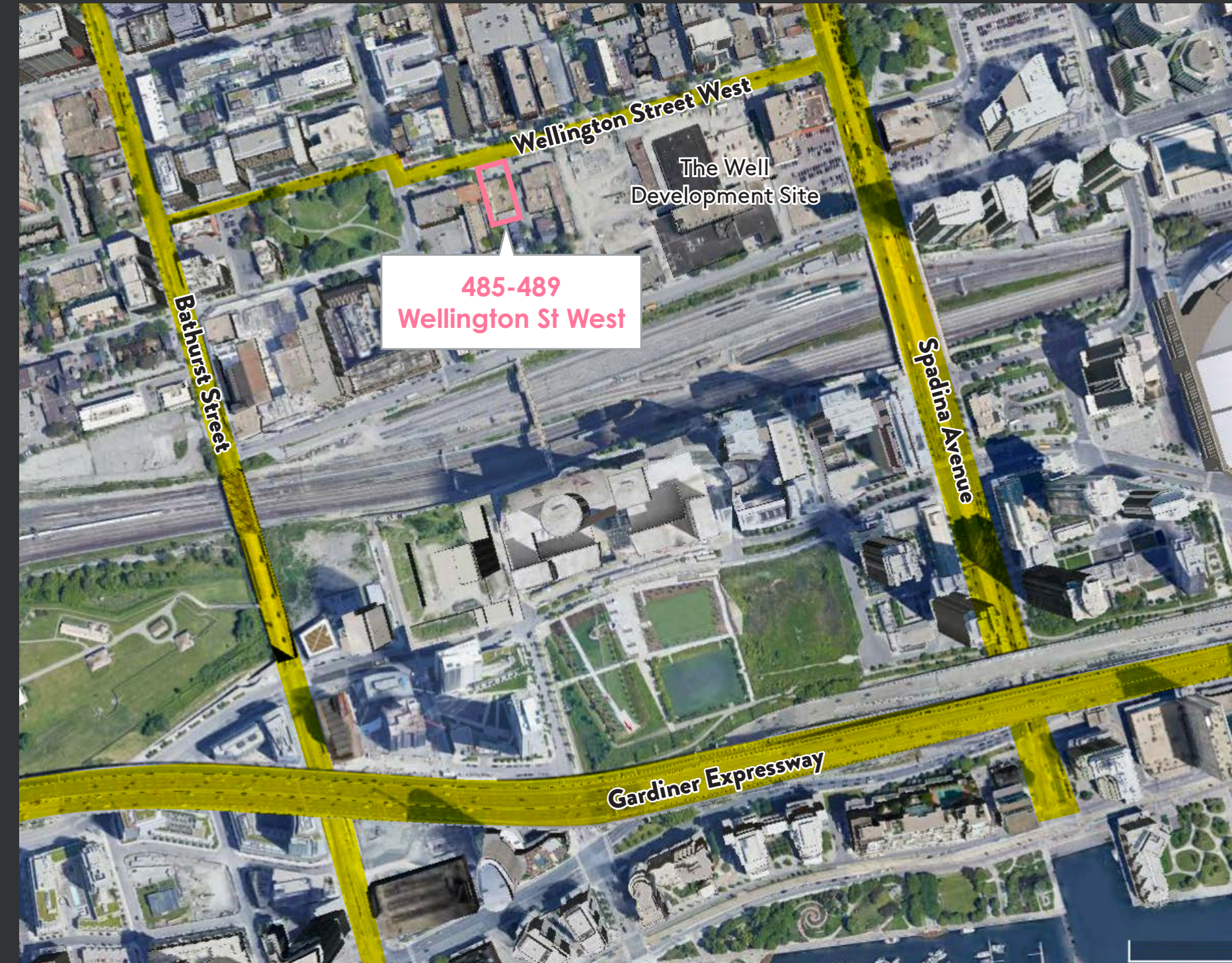
485-489 Wellington St West

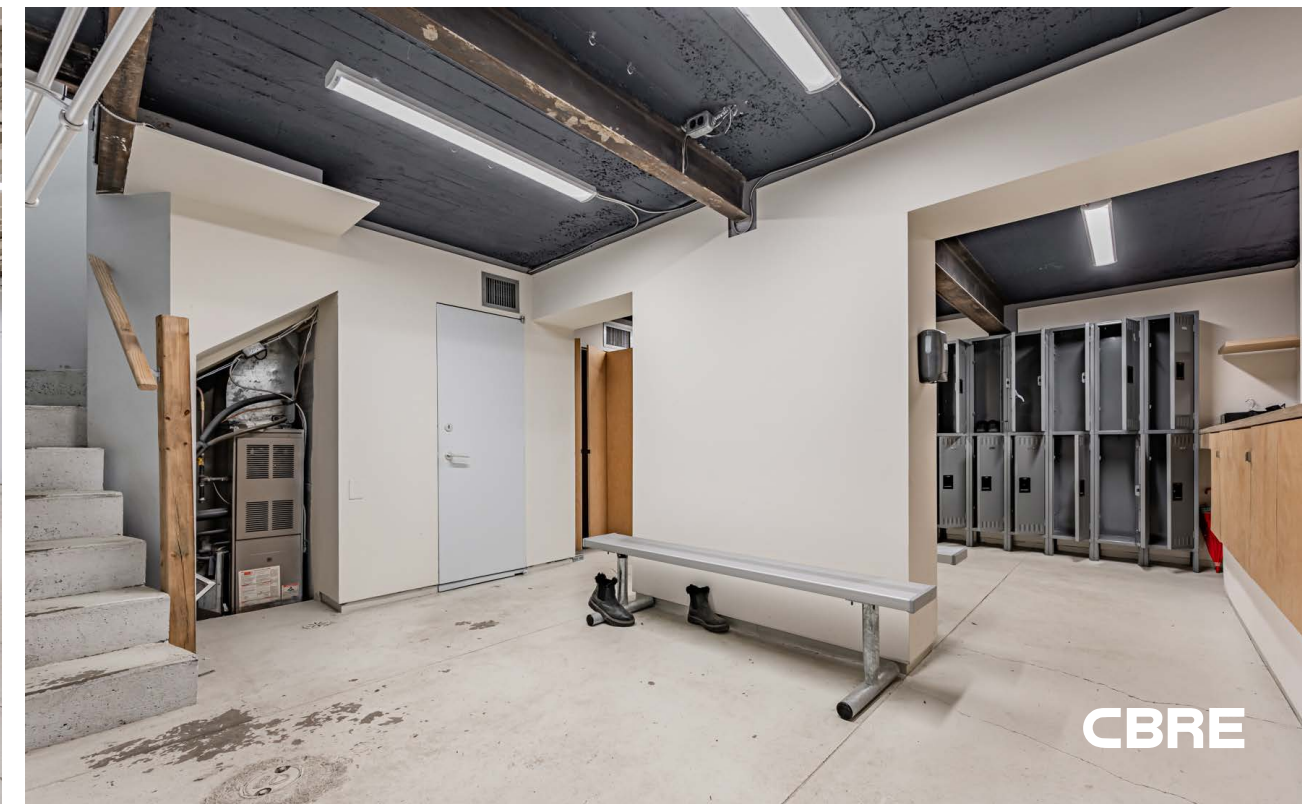
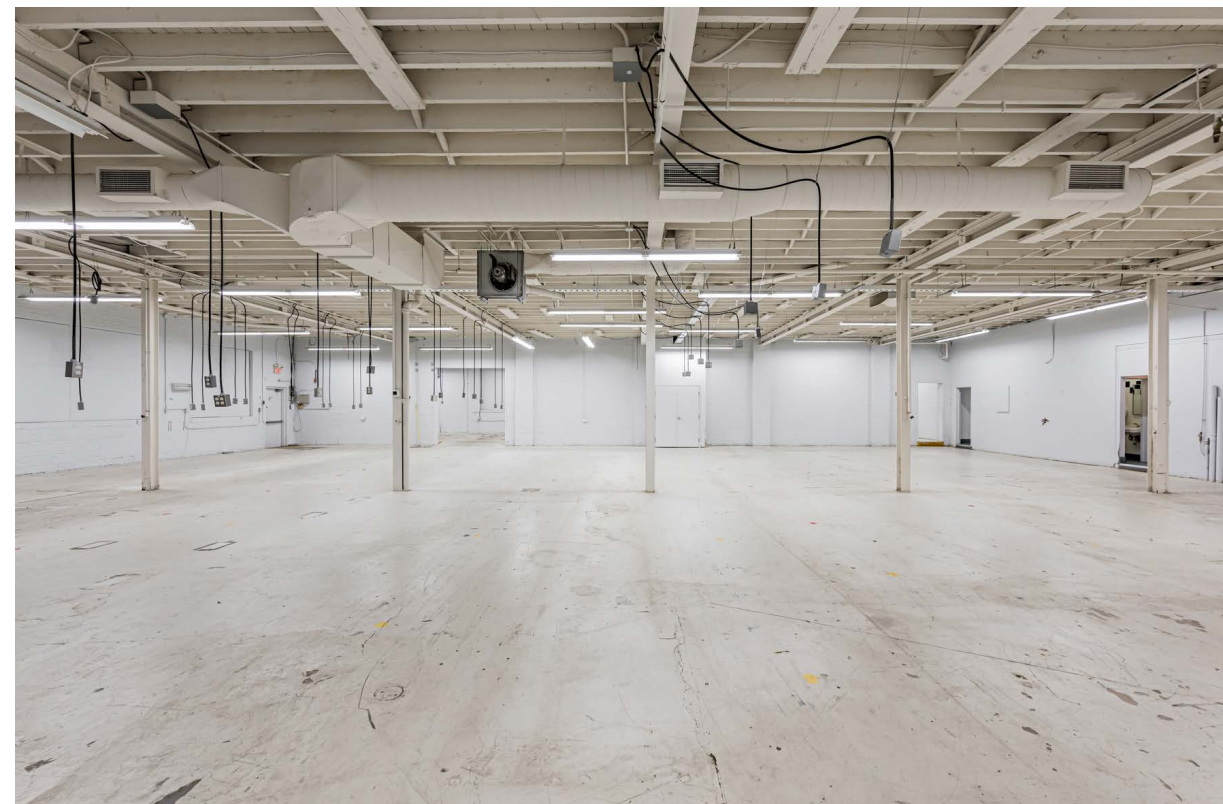
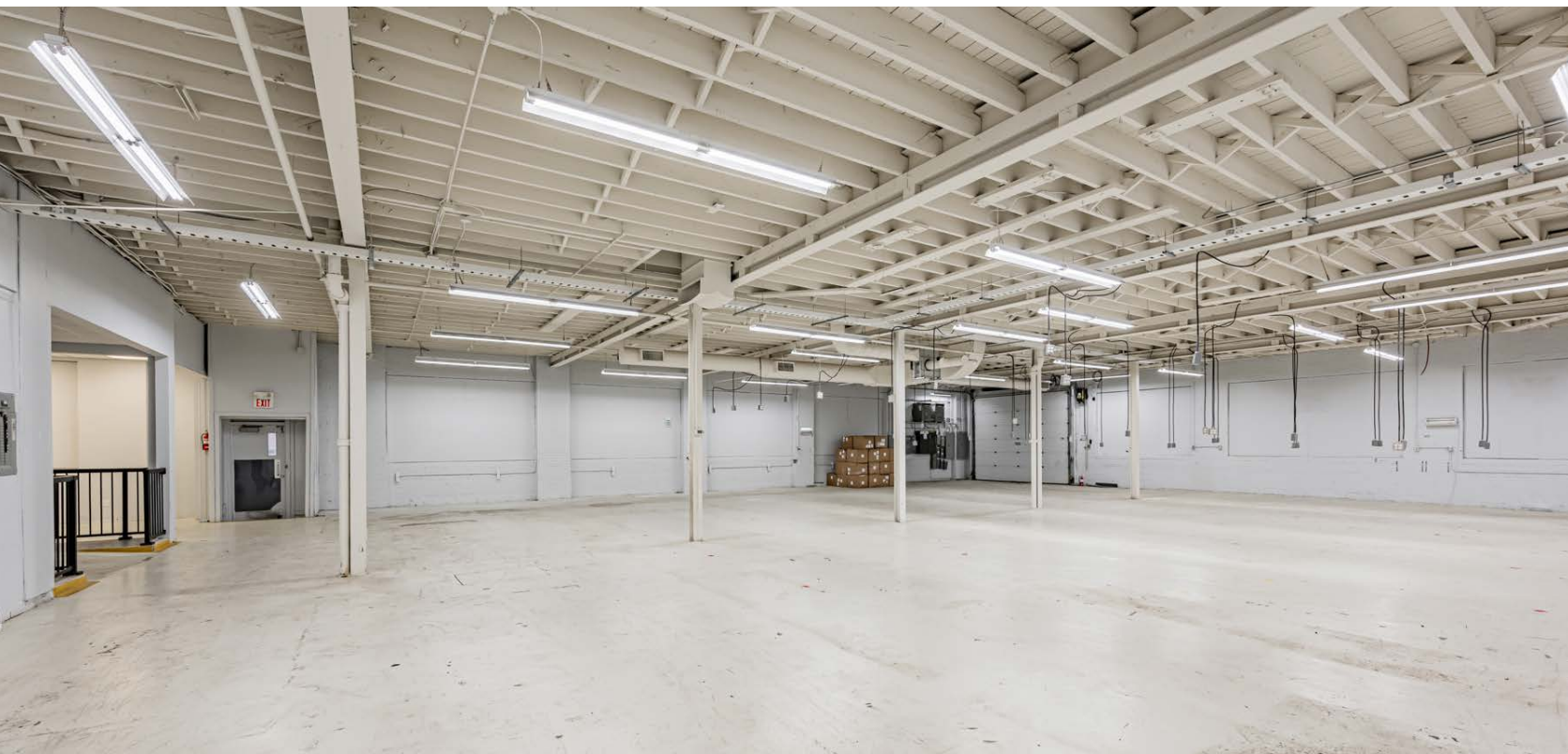
location

485-489 Wellington Street West is located in the heart of the entertainment district, just steps off of the best stretch of King Street West. The King West entertainment district is Toronto's most dynamic retail environment, known for the city's largest concentration of restaurants, theatres and nightlife.



Rear Loading





Advisors

Arlin Markowitz*
Executive Vice President
416 815 2374
arlin.markowitz@cbre.com

Alex Edmison*
Senior Vice President
416 874 7266
alex.edmison@cbre.com

Jackson Turner**
Senior Vice President
416 815 2394
jackson.turner@cbre.com

Teddy Taggart*
Associate Vice President
416 847 3254
teddy.taggart@cbre.com

Emily Everett
Sales Representative
647 943 4185
emily.everett@cbre.com

*Sales Representative
**Broker

CBRE

This disclaimer shall apply to CBRE Limited, Real Estate Brokerage, and to all other divisions of the Corporation; to include all employees and independent contractors ("CBRE"). All references to CBRE Limited herein shall be deemed to include CBRE, Inc. The information set out herein, including, without limitation, any projections, images, opinions, assumptions and estimates obtained from third parties (the "Information") has not been verified by CBRE, and CBRE does not represent, warrant or guarantee the accuracy, correctness and completeness of the Information. CBRE does not accept or assume any responsibility or liability, direct or consequential, for the Information or the recipient's reliance upon the Information. The recipient of the Information should take such steps as the recipient may deem necessary to verify the Information prior to placing any reliance upon the Information. The Information may change and any property described in the Information may be withdrawn from the market at any time without notice or obligation to the recipient from CBRE. CBRE and the CBRE logo are the service marks of CBRE Limited and/or its affiliated or related companies in other countries. All other marks displayed on this document are the property of their respective owners. All Rights Reserved.

Mapping Sources: Canadian Mapping Services canadamapping@cbre.com; DMTI Spatial, Environics Analytics, Microsoft Bing, Google Earth