

88 Bathurst

RETAIL FOR LEASE



PREMIUM RETAIL FOR LEASE IN THE KING WEST NEIGHBOURHOOD

CBRE Hines

88 Bathurst

Located on the ground floor and P1 level of a new 312,000 SF mixed-use project by Hines. When completed, 88 Bathurst Street will be the premier multifamily rental building in Toronto, featuring world-class design, market-leading amenities and best-in-class services.

GROUND FLOOR

RETAIL 1: 9,589 SF
RETAIL 2: 4,246 SF
RETAIL 3: 1,856 SF

LOWER LEVEL

RETAIL 4: 10,440 SF

NET RENT

PLEASE CONTACT LISTING AGENTS

TMI

TBD

OCCUPANCY

Q2 2025

- Located in downtown Toronto in the heart of the King West neighbourhood, steps from the intersection of King and Bathurst and across the street from the 1 Hotel
- In immediate proximity to three major streetcar lines and a 15-minute walk to the financial core
- Surrounded by many of Toronto's most popular restaurants and bars including Oretta, Ruby Soho, Buca, Lavelle, Locals Only, Belfast Love and many more

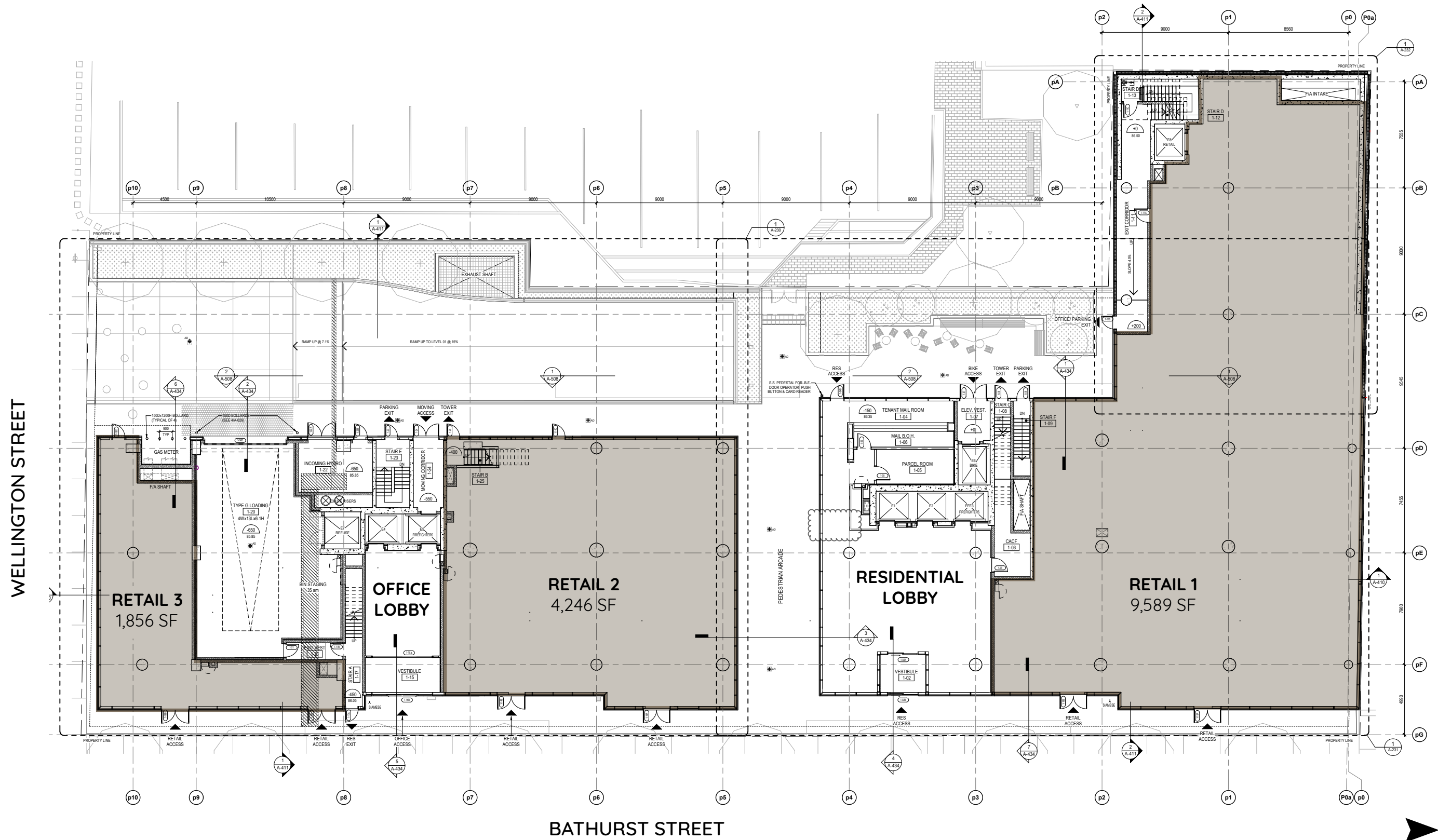
CBRE Hines



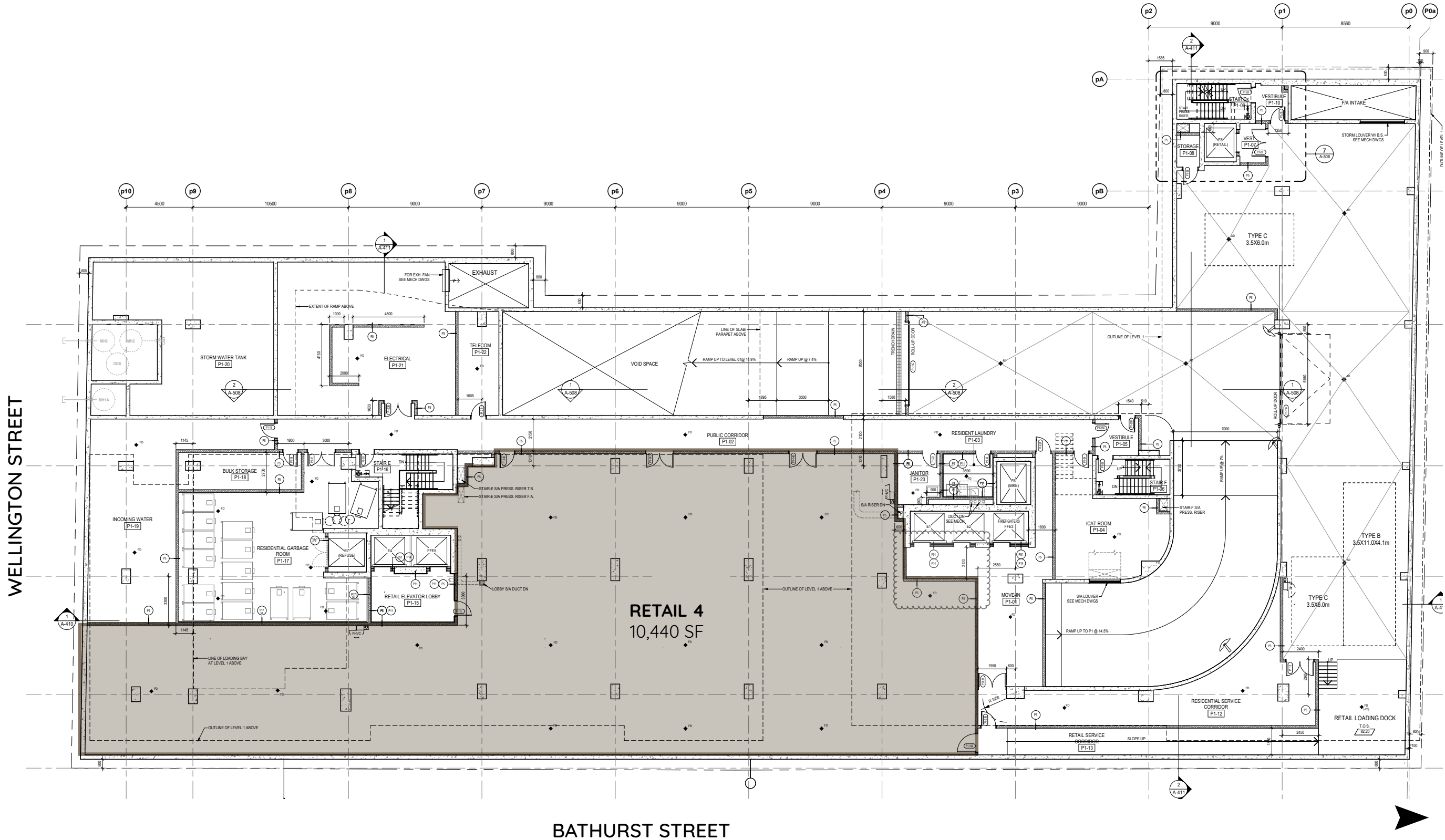
88
Bathurst



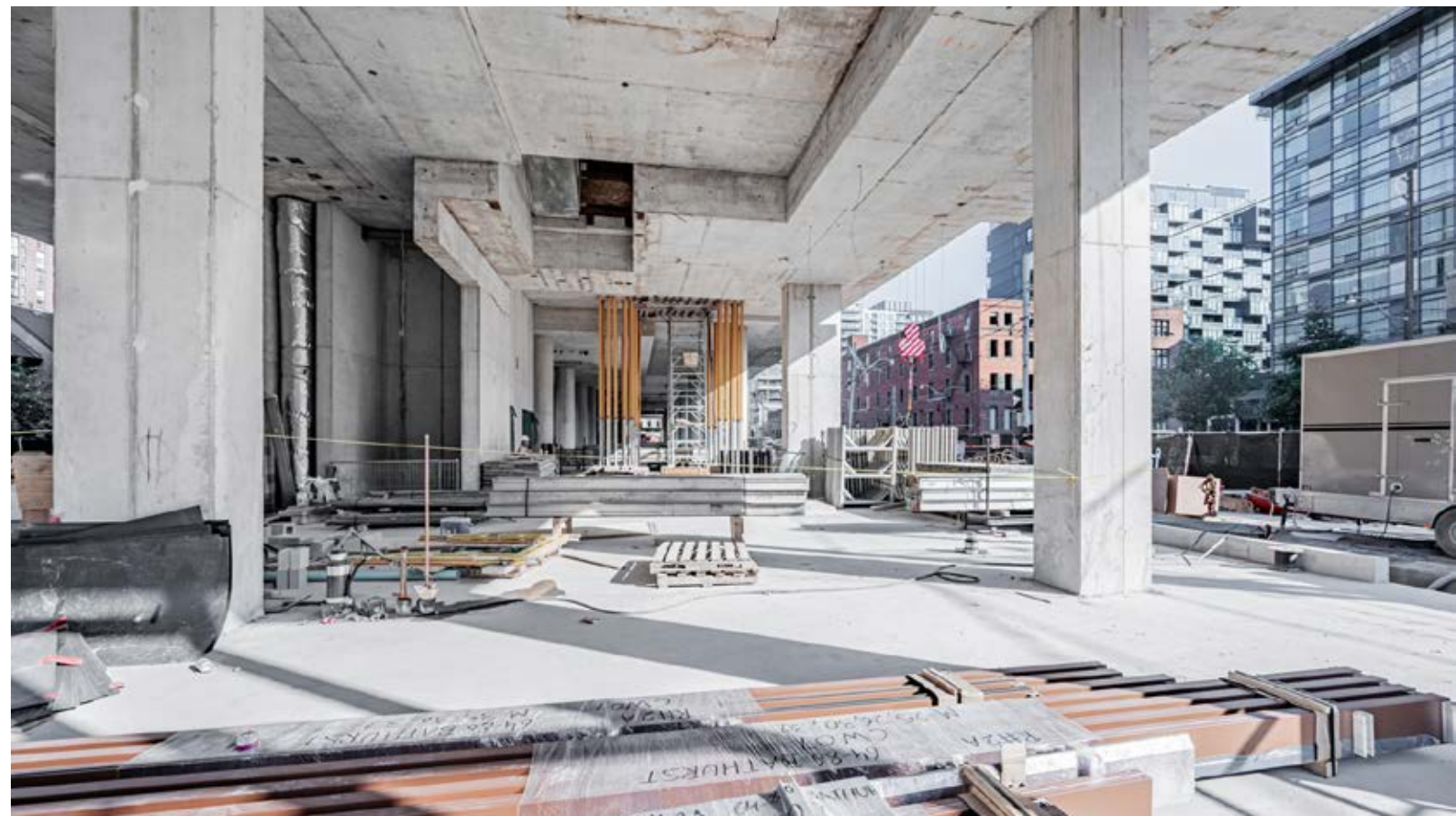
Ground Floor Plan



Lower Level Floor Plan



Construction Status
September 2023





The Location

88 Bathurst Street is located in the heart of Toronto's King West Neighbourhood, the city's most dynamic retail environment, known for the city's largest concentration of restaurants, theatres and nightlife. It has seen an increase in the diversification of retail uses, leveraging one of the largest residential development cycles in Canadian history.

Neighbouring tenants and traffic drivers include 1 Hotel Toronto, Farm Boy, BlackToe Running, Oretta, Ruby Soho, Buca, Lavelle, Locals Only and Belfast Love.

Neighbouring Tenants





Bayside Toronto



CIBC Square



T3 Sterling Road

Hines

Hines is a privately owned global real estate investment, development and management firm, founded in 1957, with a presence in 395 cities in 30 countries and \$95.79 billion¹ of assets under management and more than 96 million square feet of assets for which Hines provides third-party property-level services.

Hines has 203 developments currently underway around the world, and historically, has developed, redeveloped or acquired 1,610 properties, totaling over 537 million square feet. The firm's current property and asset management portfolio includes 685 properties, representing over 216 million square feet. With extensive experience in investments across the risk spectrum and all property types, and a foundational commitment to ESG, Hines is one of the largest and most respected real estate organizations in the world.

¹Includes both the global Hines organization and RIA AUM as of December 31st, 2022.



CBRE:

ARLIN MARKOWITZ*
EXECUTIVE VICE PRESIDENT
416 815 2374
ARLIN.MARKOWITZ@CBRE.COM

ALEX EDMISON*
SENIOR VICE PRESIDENT
416 874 7266
ALEX.EDMISON@CBRE.COM

JACKSON TURNER**
SENIOR VICE PRESIDENT
416 815 2394
JACKSON.TURNER@CBRE.COM

TEDDY TAGGART*
VICE PRESIDENT
416 847 3254
TEDDY.TAGGART@CBRE.COM

EMILY EVERETT*
SALES REPRESENTATIVE
647 943 4185
EMILY.EVERETT@CBRE.COM

*SALES REPRESENTATIVE
**BROKER

HINES:

BRETT NOILES
416 554 8459
BRETT.NOILES@HINES.COM

CBRE Hines