

500 queen east

RETAIL FOR LEASE AT QUEEN EAST & SUMACH STREET
500 QUEEN ST EAST, TORONTO



500 queen east

Façade Restoration Has Just Been Complete!

PROPERTY DETAILS

Address: 500 Queen Street East, Toronto

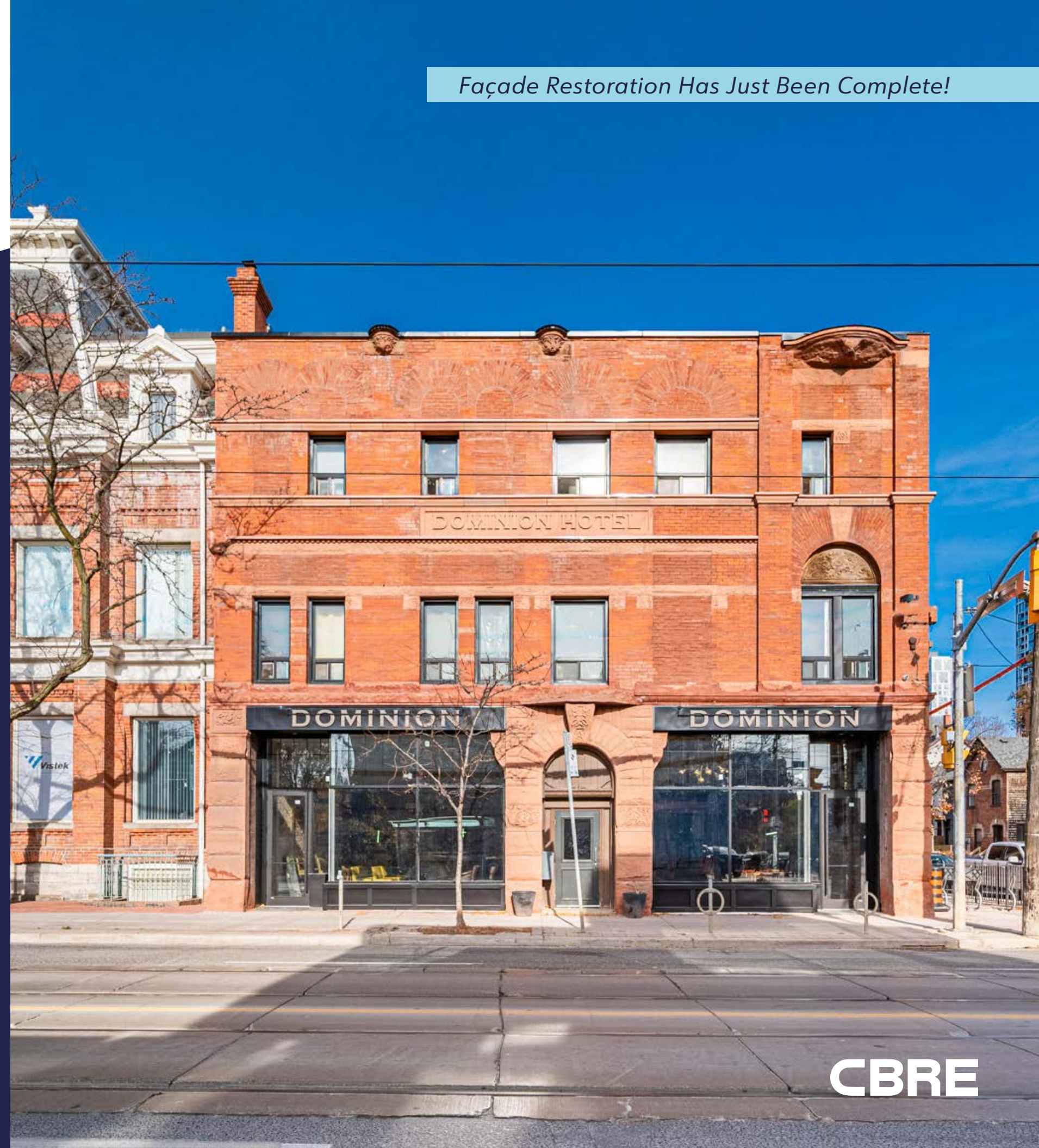
Size: Ground: 4,605 sq. ft.
Basement: 2,813 sq. ft.

Net Rent: \$40.00 per sq. ft.

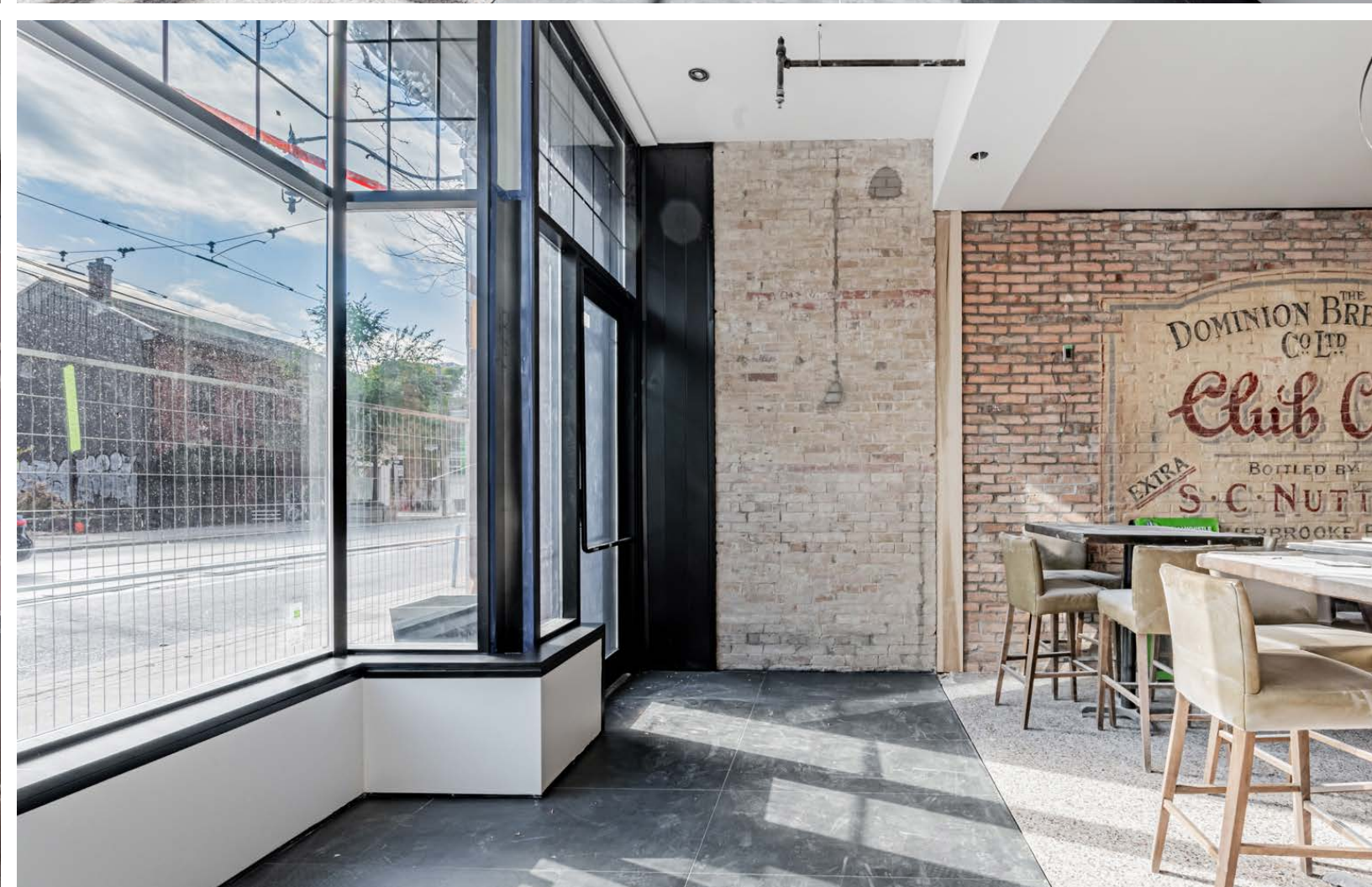
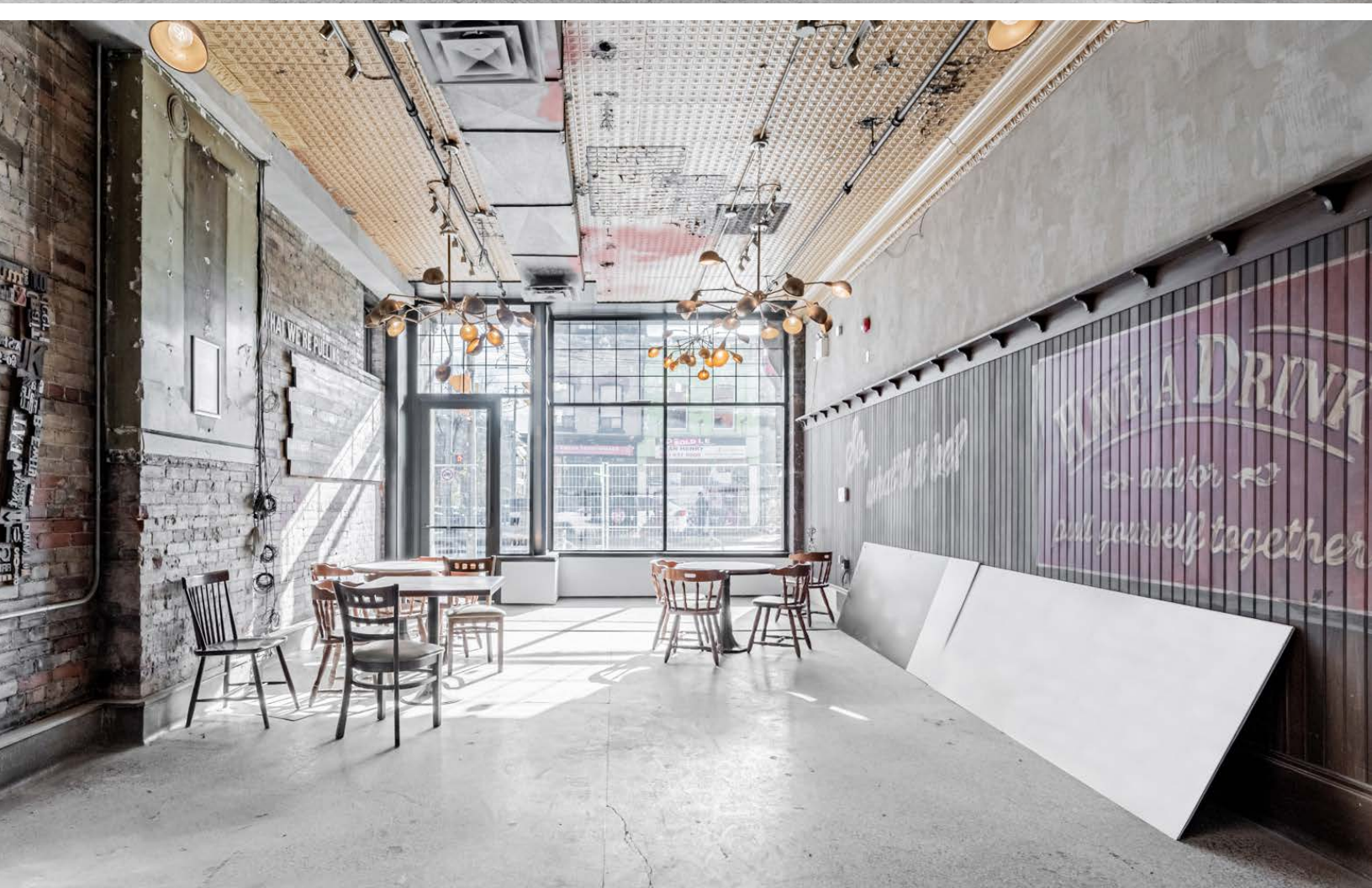
TMI: \$11.00 per sq. ft.

Available: Immediately

- High-profile retail at the corner of Queen West and Sumach Street
- Located in the rapidly growing Downtown East neighbourhood which is seeing an influx of residential and office developments
- Large outdoor patio (42 person capacity)
- Indoor liquor license capacity of 229
- Neighbouring tenants include Impact Kitchen, Tim Hortons, Bar Reyna, Gusto 501, Body Blitz, Spaccio, Wine Rack and many more
- Gas and water will be separately metered

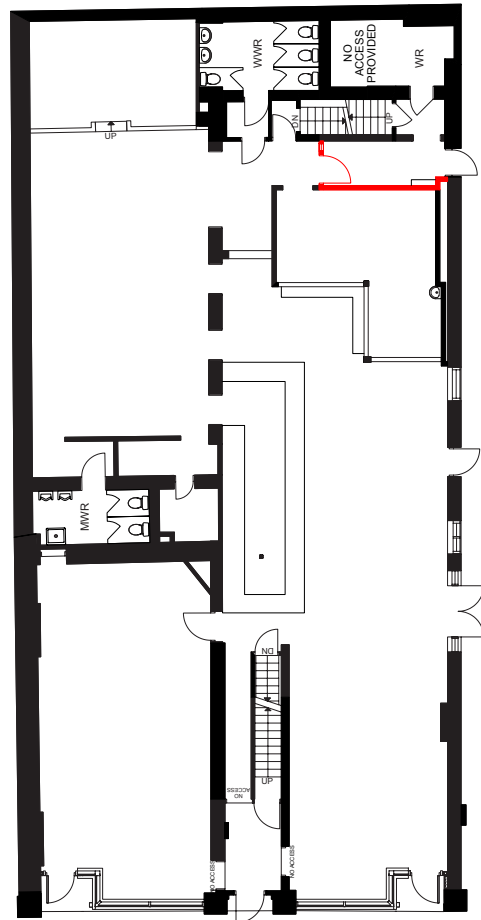


CBRE

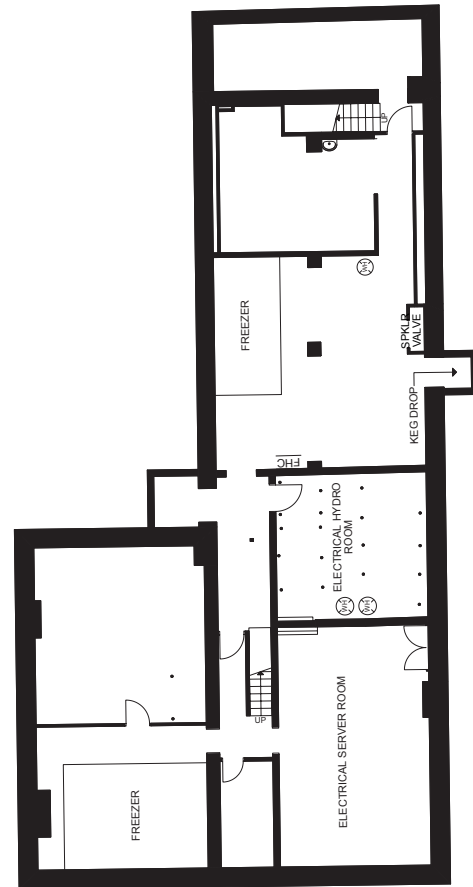


FLOOR PLANS

GROUND FLOOR 4,605 SF

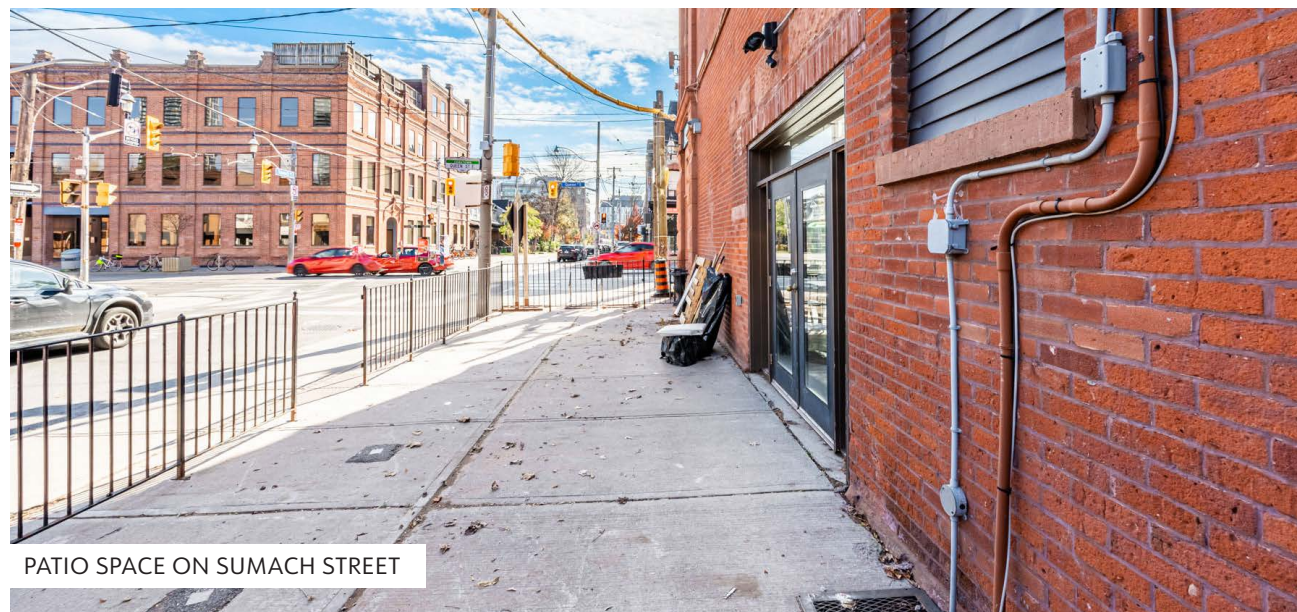
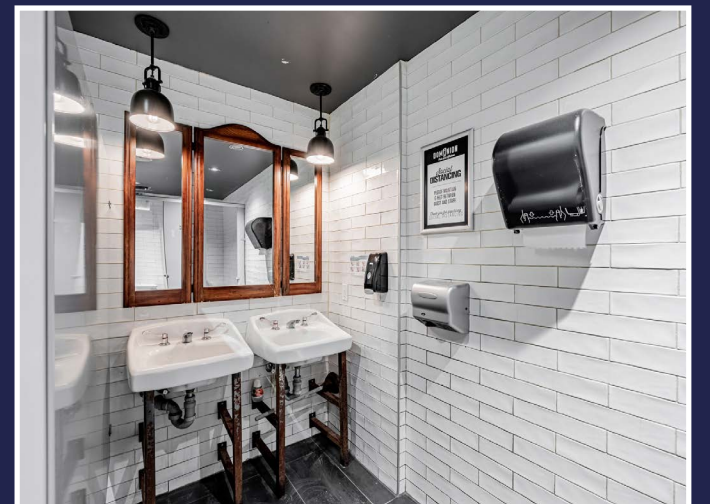
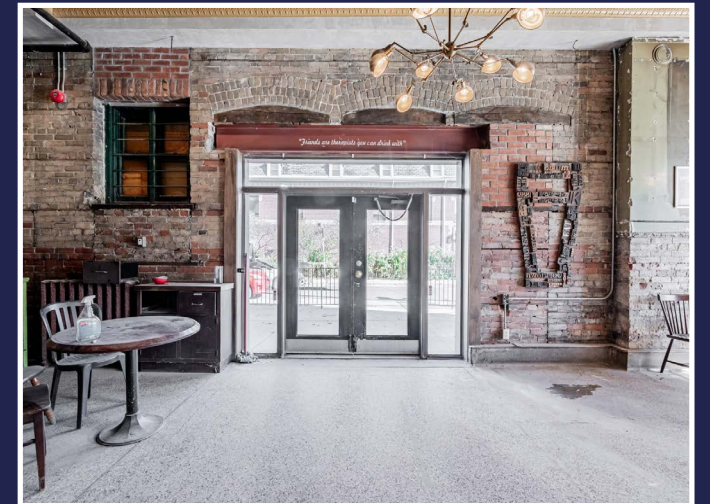


LOWER LEVEL 2,813 SF



SUMACH STREET

QUEEN STREET EAST



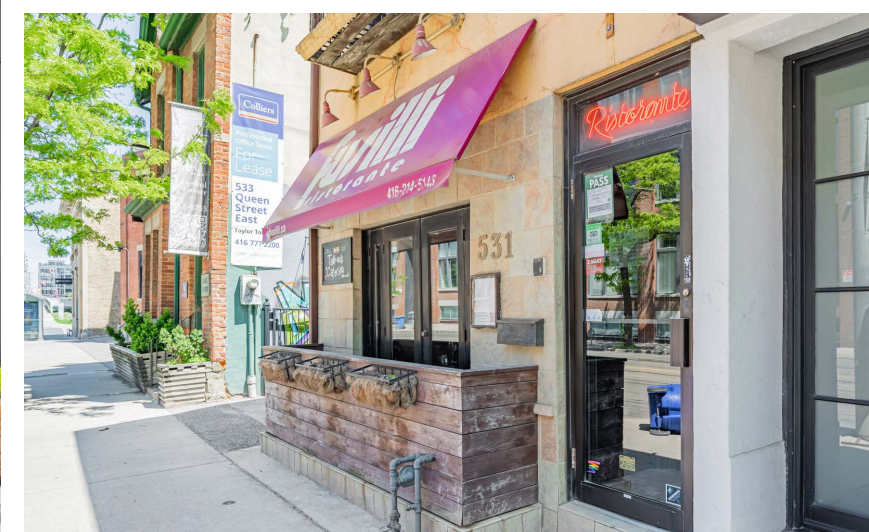
PATIO SPACE ON SUMACH STREET

The Location

500 Queen Street East is located in Corktown, in the heart of Downtown East. Corktown has become a popular neighbourhood for young professionals due to its central location and easy access to Toronto's business and entertainment districts as well as its proximity to the Distillery District and Leslieville.

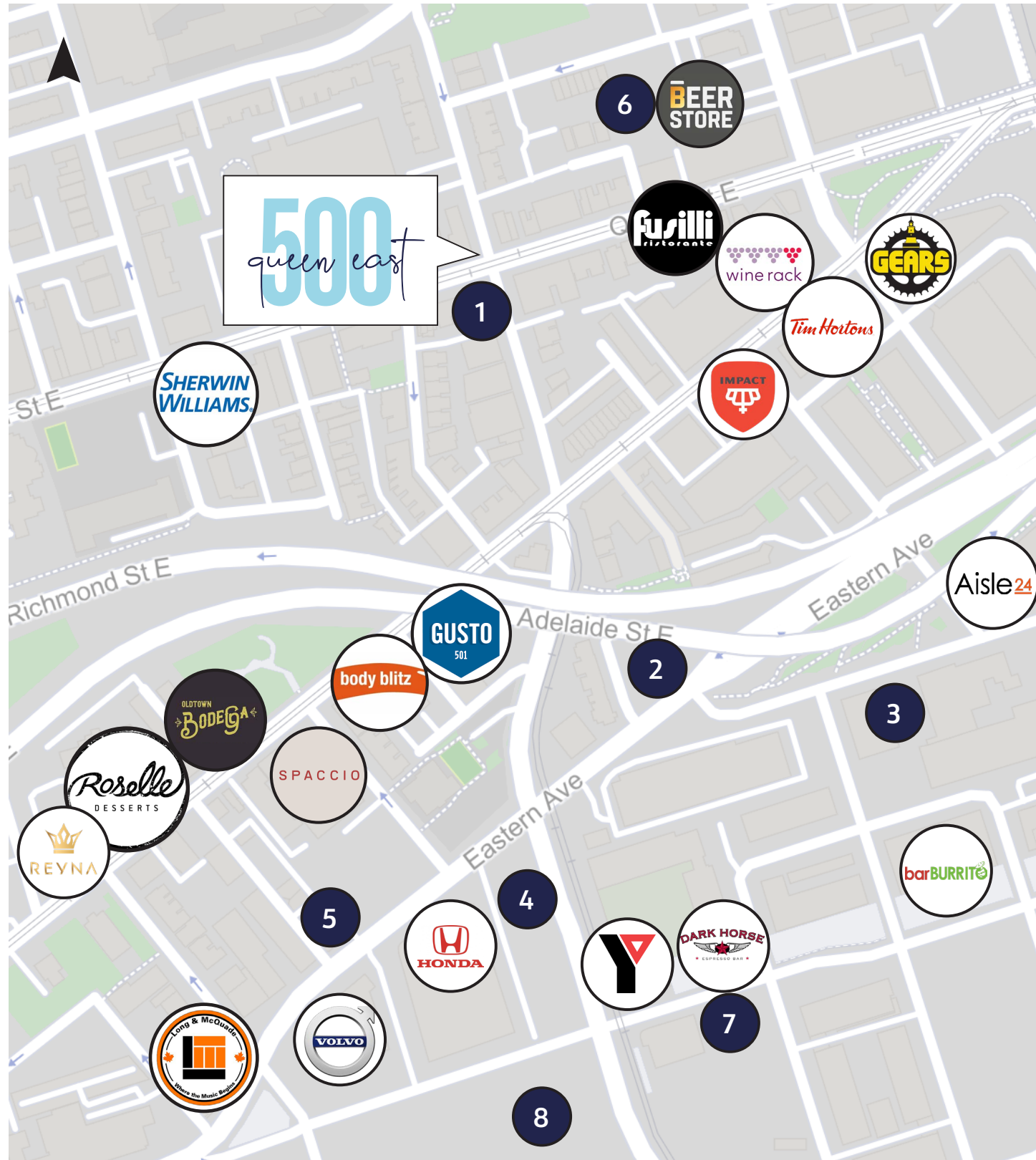
Corktown is home to many beautiful Victorian homes as well as vacated industrial buildings that have been converted into shops, lofts and studio space that give the neighbourhood added charm. In recent years the area has become a new hot-spot to grab a drink or a bite to eat thanks to Gusto 501, Spaccio (Terroni), Alo, Reyna and other popular local spots making Corktown home.

Downtown East has seen remarkable growth and significant change in the past ten years. There are currently several large scale office developments and residential condominiums in various stages of development in the neighbourhood. Future growth will only be further fueled by the addition of a subway stop in the neighbourhood. Corktown subway station, part of the new 15.6 km Ontario Line, is under construction at the corner of King and Berkeley, less than a ten minute walk from 500 Queen.



The Location

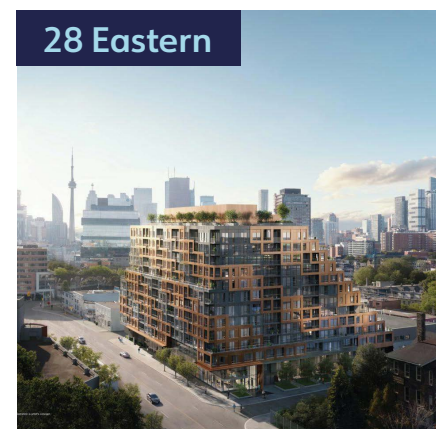
Neighbouring Retailers & Area Developments



Area Developments

- | | | | |
|---|--|---|---|
| 1 | THE QUEEN PRE-CONSTRUCTION UNITS: 143 | 5 | 28 EASTERN UNDER CONSTRUCTION UNITS: 379 |
| 2 | 1 SUMACH PRE-CONSTRUCTION UNITS: 443 | 6 | 28 RIVER STREET PRE-CONSTRUCTION UNITS: 380 |
| 3 | WDL BLOCK 17/26 PRE-CONSTRUCTION UNITS: 1,038 | 7 | CANARY HOUSE UNDER CONSTRUCTION UNITS: 206 |
| 4 | CHERRY PLACE PRE-CONSTRUCTION UNITS: 348 | 8 | WDL BLOCKS 3,4,7 UNDER CONSTRUCTION UNITS: 855 |

3,700+ incoming residential units





ADVISORS

Arlin Markowitz*
Executive Vice President
416 815 2374
arlin.markowitz@cbre.com

Alex Edmison*
Senior Vice President
416 874 7266
alex.edmison@cbre.com

Jackson Turner**
Senior Vice President
416 815 2394
jackson.turner@cbre.com

Teddy Taggart*
Vice President
416 847 3254
teddy.taggart@cbre.com

Emily Everett
Sales Representative
647 943 4185
emily.everett@cbre.com

*Sales Representative

** Broker

CBRE

This disclaimer shall apply to CBRE Limited, Real Estate Brokerage, and to all other divisions of the Corporation; to include all employees and independent contractors ("CBRE"). The information set out herein, including, without limitation, any projections, images, opinions, assumptions and estimates obtained from third parties (the "Information") has not been verified by CBRE, and CBRE does not represent, warrant or guarantee the accuracy, correctness and completeness of the Information. CBRE does not accept or assume any responsibility or liability, direct or consequential, for the Information or the recipient's reliance upon the Information. The recipient of the Information should take such steps as the recipient may deem necessary to verify the Information prior to placing any reliance upon the Information. The Information may change and any property described in the Information may be withdrawn from the market at any time without notice or obligation to the recipient from CBRE. CBRE and the CBRE logo are the service marks of CBRE Limited and/or its affiliated or related companies in other countries. All other marks displayed on this document are the property of their respective owners. All Rights Reserved.