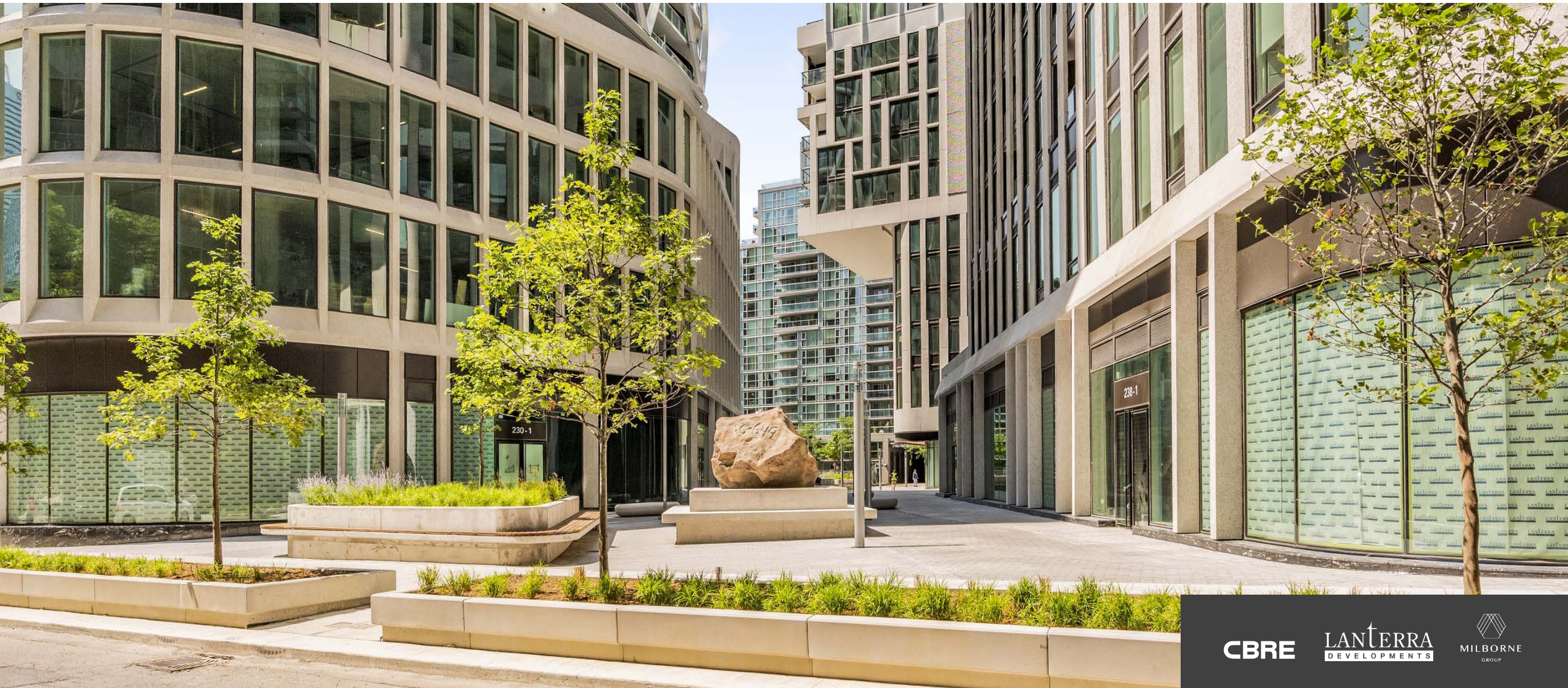




Prime Retail for Lease

Artists' Alley

234 Simcoe Street
Toronto



CBRE

LAN TERRA
DEVELOPMENTS

MILBORNE
GROUP



Premium retail in the podium level of Lanterra's new three tower mixed-use development in downtown Toronto's Discovery District.



Artists' Alley

Retail for Lease

Unit Size

1,500 sq. ft. – 7,200 sq. ft.

Available

Immediately

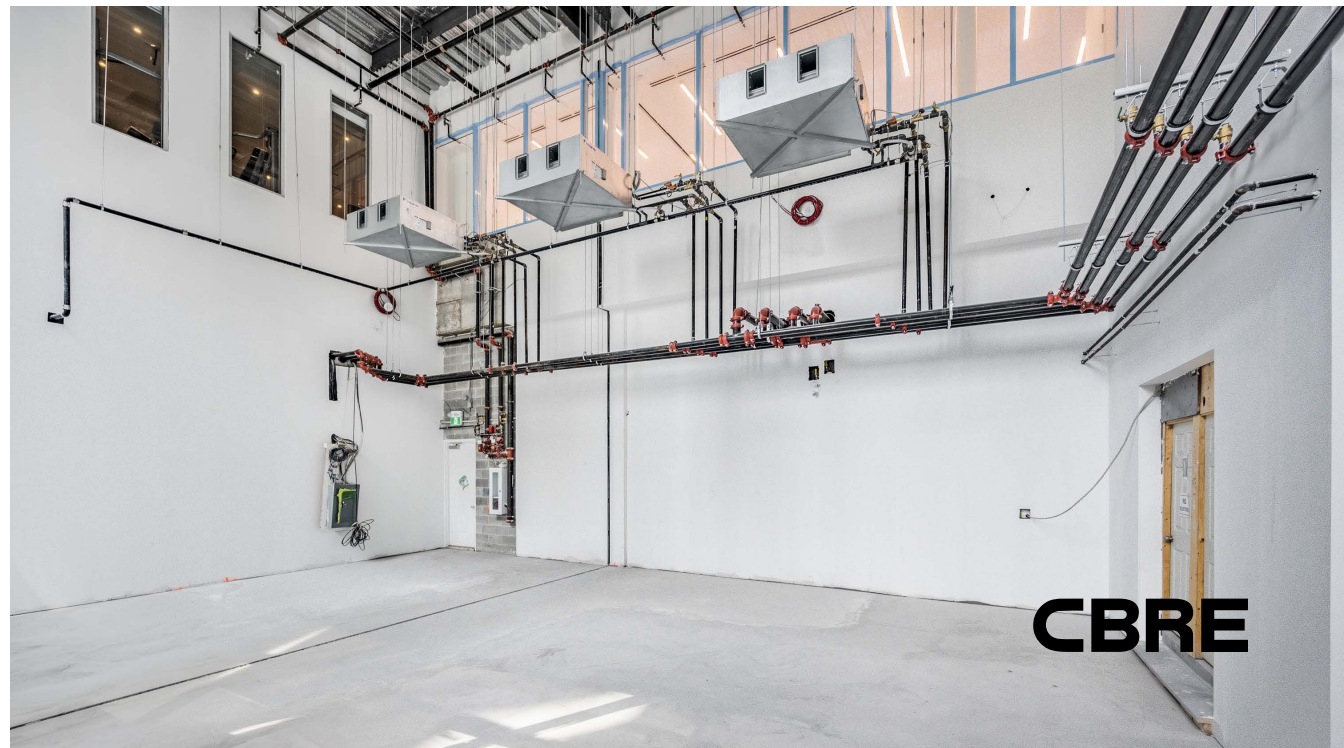
Net Rent

Please contact us

- Located half a block north of Queen & Simcoe and a short walk to the subway
- Sits at the base of a 900-unit condominium and is surrounded by numerous other residential and office towers
- Across the Street from the US Consulate and in a close proximity to numerous hospitals
- A Green P with 100 parking stalls is located under the project
- Overlooks a new public park
- Ideal for all retail uses from service based retail, restaurants and medical uses



CBRE



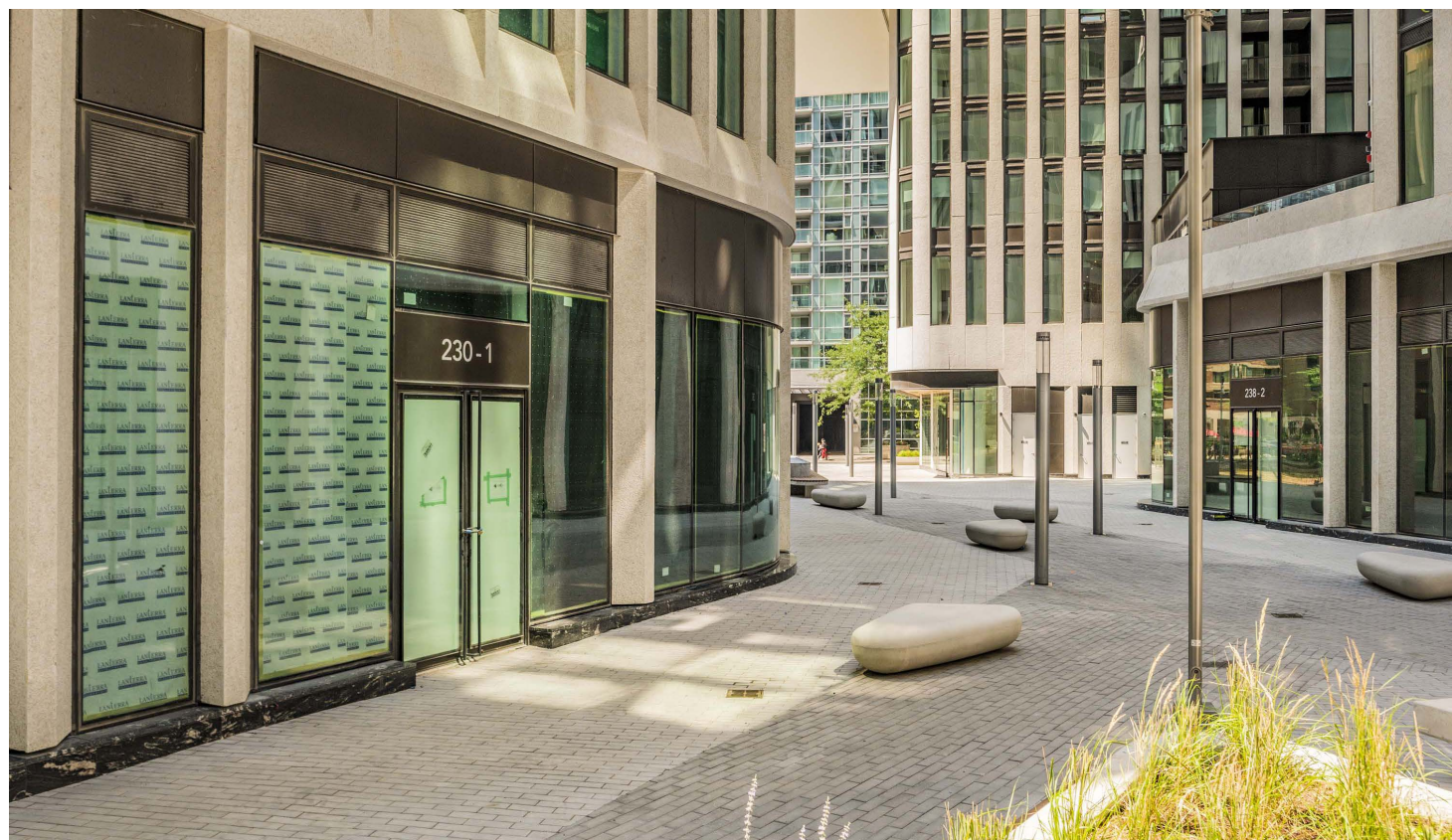
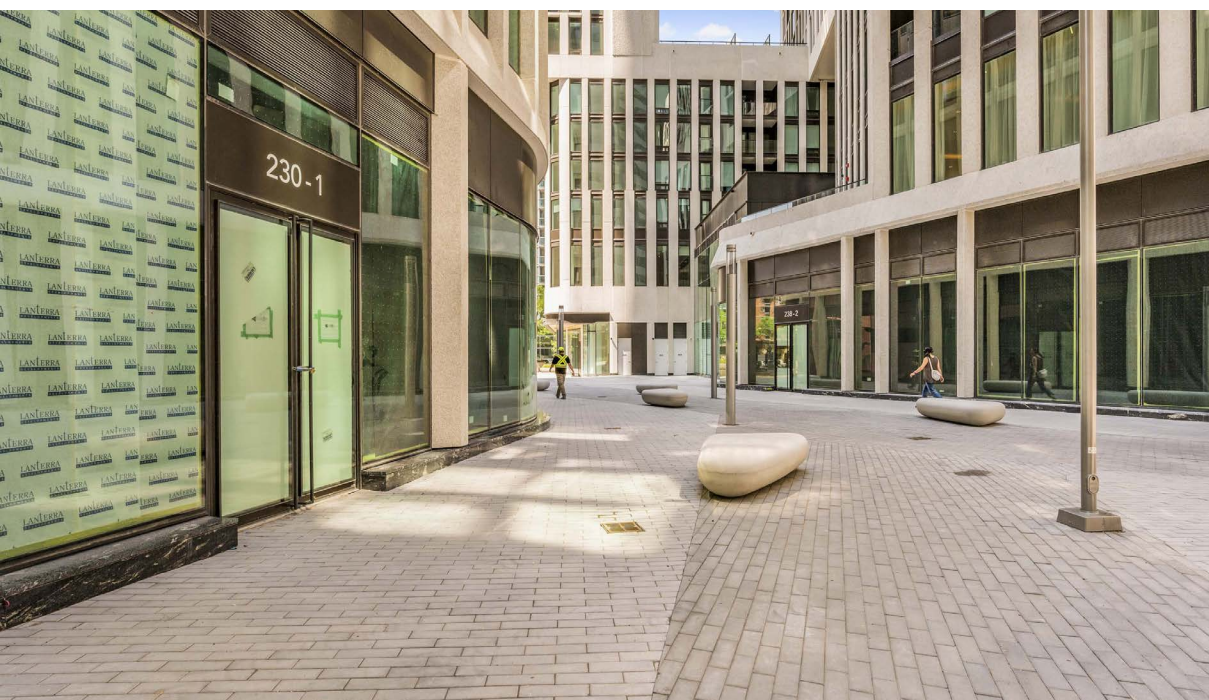
Floor Plan

ST. PATRICK STREET



SIMCOE STREET





The Location

Artists' Alley occupies a central location in downtown Toronto between St. Patrick and Simcoe Street, just south of Dundas Street West. It is located in the Discovery District, a commercial hub that has a high concentration of hospitals and research institutions including MaRS Discovery District, SickKids Hospital, Mount Sinai among many others.

To the south of the property is Queen West, one of Toronto's premier fashion destinations. The area is known for its mix of local fashion boutiques and premium international brands including Zara, Aritzia, Lululemon, Reigning Champ, Casper and many more.

Ideally positioned among multiple public transportation lines, Artists' Alley is steps away from both St. Patrick and Osgoode subway stations as well the Dundas streetcar line and the Queen streetcar line.

98



Walk Score

100

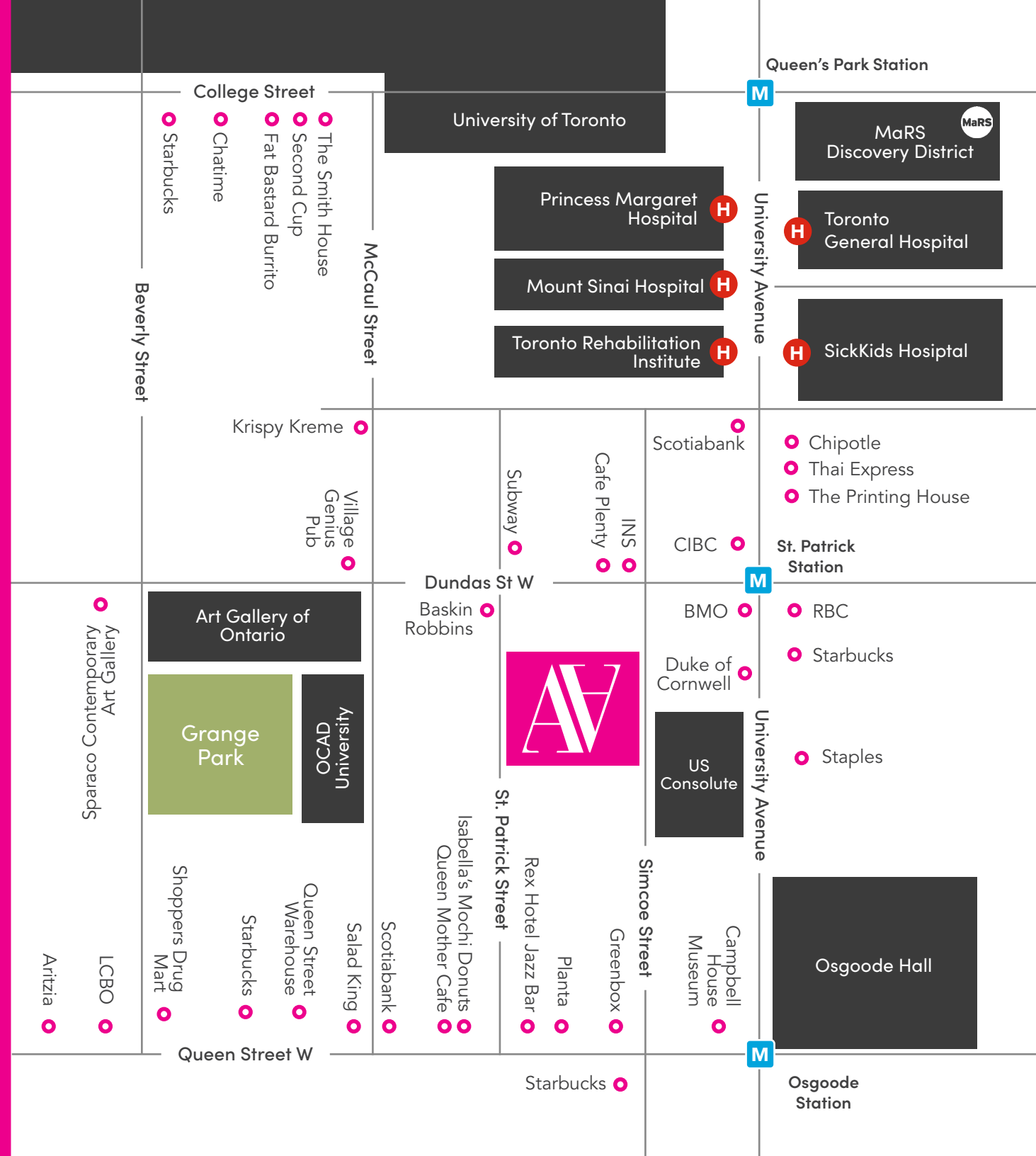


Transit Score

98



Bike Score





For More Information
Please Contact:

Alex Edmison* Senior Vice President 416 874 7266 alex.edmison@cbre.com	Arlin Markowitz* Executive Vice President 416 815 2374 arlin.markowitz@cbre.com	Jackson Turner** Senior Vice President 416 815 2394 jackson.turner@cbre.com	Teddy Taggart* Vice President 416 847 3254 teddy.taggart@cbre.com	Emily Everett* Sales Associate 647 943 4185 emily.everett@cbre.com
----------------------------------------------------------------------------------------	-------------------------------------------------------------------------------------------------	---------------------------------------------------------------------------------------------	-----------------------------------------------------------------------------------	------------------------------------------------------------------------------------

*Sales Representative **Broker

This disclaimer shall apply to CBRE Limited, Real Estate Brokerage, and to all other divisions of the Corporation; to include all employees and independent contractors ("CBRE"). The information set out herein, including, without limitation, any projections, images, opinions, assumptions and estimates obtained from third parties (the "Information") has not been verified by CBRE, and CBRE does not represent, warrant or guarantee the accuracy, correctness and completeness of the Information. CBRE does not accept or assume any responsibility or liability, direct or consequential, for the Information or the recipient's reliance upon the Information. The recipient of the Information should take such steps as the recipient may deem necessary to verify the Information prior to placing any reliance upon the Information. The Information may change and any property described in the Information may be withdrawn from the market at any time without notice or obligation to the recipient from CBRE. CBRE and the CBRE logo are the service marks of CBRE Limited and/or its affiliated or related companies in other countries. All other marks displayed on this document are the property of their respective owners. All Rights Reserved.