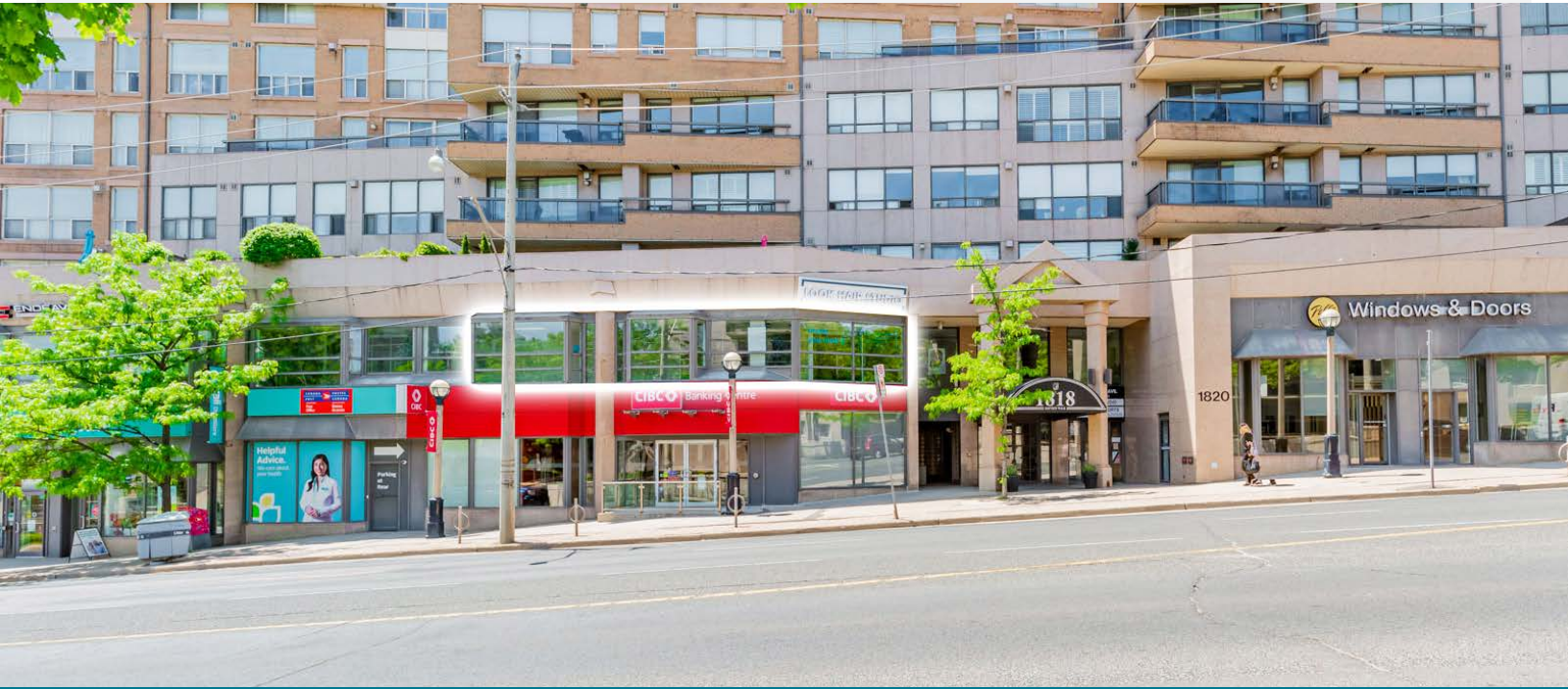


# 1820 Bayview Avenue *for lease*



**Second Floor Opportunity in the Heart of Leaside**



**CBRE**





# 1820 Bayview Avenue *for lease*

**Address:** 1820 Bayview Avenue, Toronto

**Size:** 2,248 sq. ft.

**Net Rent:** \$28.00 per sq. ft.

**TMI:** \$14.00 per sq. ft.

**Available:** Immediately

- Bright and spacious second floor space just north of the intersection of Bayview and Eglinton
- Excellent exposure and signage opportunities onto Bayview
- Separate commercial elevator for second floor retail
- Steps to future Leaside Eglinton Crosstown Station
- Located in a rapidly growing neighbourhood with over 3,400 proposed incoming residential units in the immediate area
- Area co-tenancies include Whole Foods, Rexall, Shoppers Drug Mart, Tim Hortons, CIBC and Metro grocery store

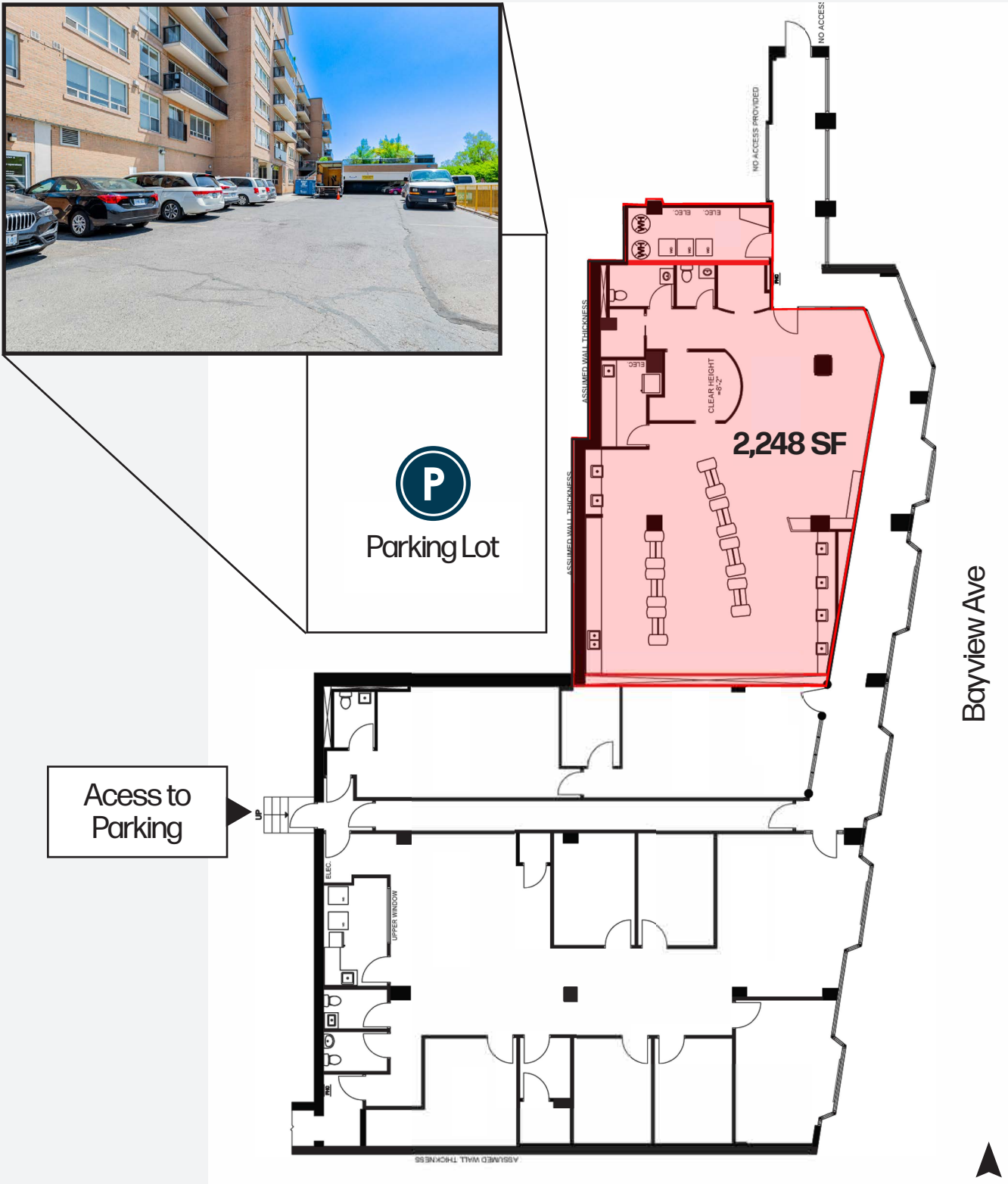
**P Ample surface and underground parking available**



# The Location



# Floor Plan





# Area Developments

## 3,494 Units Proposed at Eglinton & Bayview

Eglinton and Bayview Avenue has undergone a number of changes in the past few years with the construction of the Crosstown LRT and Leaside Station. A number of new residential high-rise towers have been proposed centered around the Eglinton and Bayview intersection and Leaside Station. Within 300 metres of the intersection, there are 10 proposed developments with a total of over 3,400 units. Leaside Common development, located just south of the intersection is currently under construction which features 197 units and has an occupancy date for next year (2025).



3D Model of Development Activity at Eglinton & Bayview. Photo Credit: Stephen Velasco



Leaside Common - Under Construction



1837 Bayview Ave - Pre-Construction



● Pre-Construction      ● Under Construction

1	1779-1787 Bayview	428	1	Leaside Common	197 units
2	589 Eglinton East	442			
3	545 Eglinton East	300			
4	503 Eglinton East	174			
5	586 Eglinton East	249			
6	1802 Bayview Ave	419			
7	2-20 Glazebrook	434			
8	1840 Bayview Ave	377			
9	1837 Bayview Avenue	259			
10	Sunnybrook Plaza	412			
		3,494			









## Advisory Team

Arlin Markowitz\*  
Executive Vice President  
416 815 2374  
arlin.markowitz@cbre.com

Alex Edmison\*  
Senior Vice President  
416 874 7266  
alex.edmison@cbre.com

Jackson Turner\*\*  
Senior Vice President  
416 815 2394  
jackson.turner@cbre.com

Teddy Taggart\*  
Vice President  
416 847 3254  
teddy.taggart@cbre.com

Emily Everett  
Sales Representative  
647 943 4185  
emily.everett@cbre.com

\*Sales Representative

\*\*Broker

# CBRE

This disclaimer shall apply to CBRE Limited, Real Estate Brokerage, and to all other divisions of the Corporation; to include all employees and independent contractors ("CBRE"). The information set out herein, including, without limitation, any projections, images, opinions, assumptions and estimates obtained from third parties (the "Information") has not been verified by CBRE, and CBRE does not represent, warrant or guarantee the accuracy, correctness and completeness of the Information. CBRE does not accept or assume any responsibility or liability, direct or consequential, for the Information or the recipient's reliance upon the Information. The recipient of the Information should take such steps as the recipient may deem necessary to verify the Information prior to placing any reliance upon the Information. The Information may change and any property described in the Information may be withdrawn from the market at any time without notice or obligation to the recipient from CBRE. CBRE and the CBRE logo are the service marks of CBRE Limited and/or its affiliated or related companies in other countries. All other marks displayed on this document are the property of their respective owners. All Rights Reserved.