

Lower Level Retail for Lease

239 Yonge Street

Toronto, ON



Lower Level Retail for Lease

239 Yonge Street

Toronto, ON

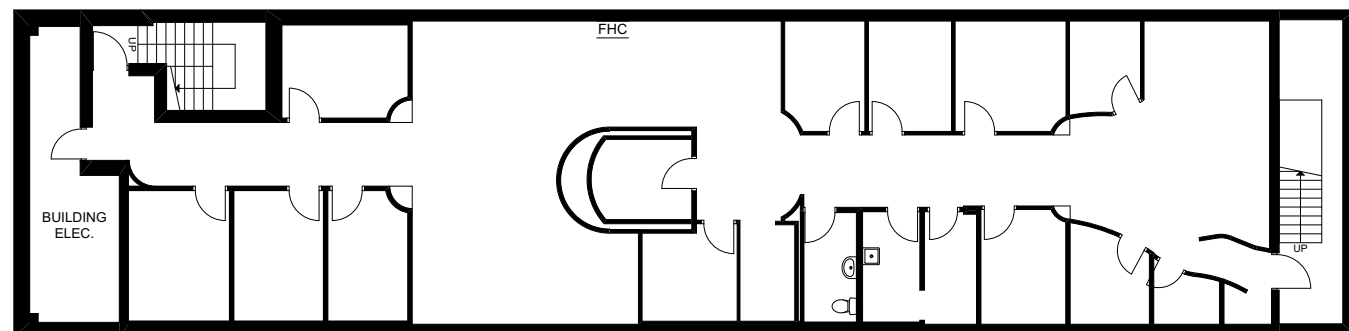
Opportunity to secure lower level retail across the street from the Eaton Centre and one block from Toronto's busiest pedestrian and tourist intersection. Steps to Queen and Dundas subway stations.

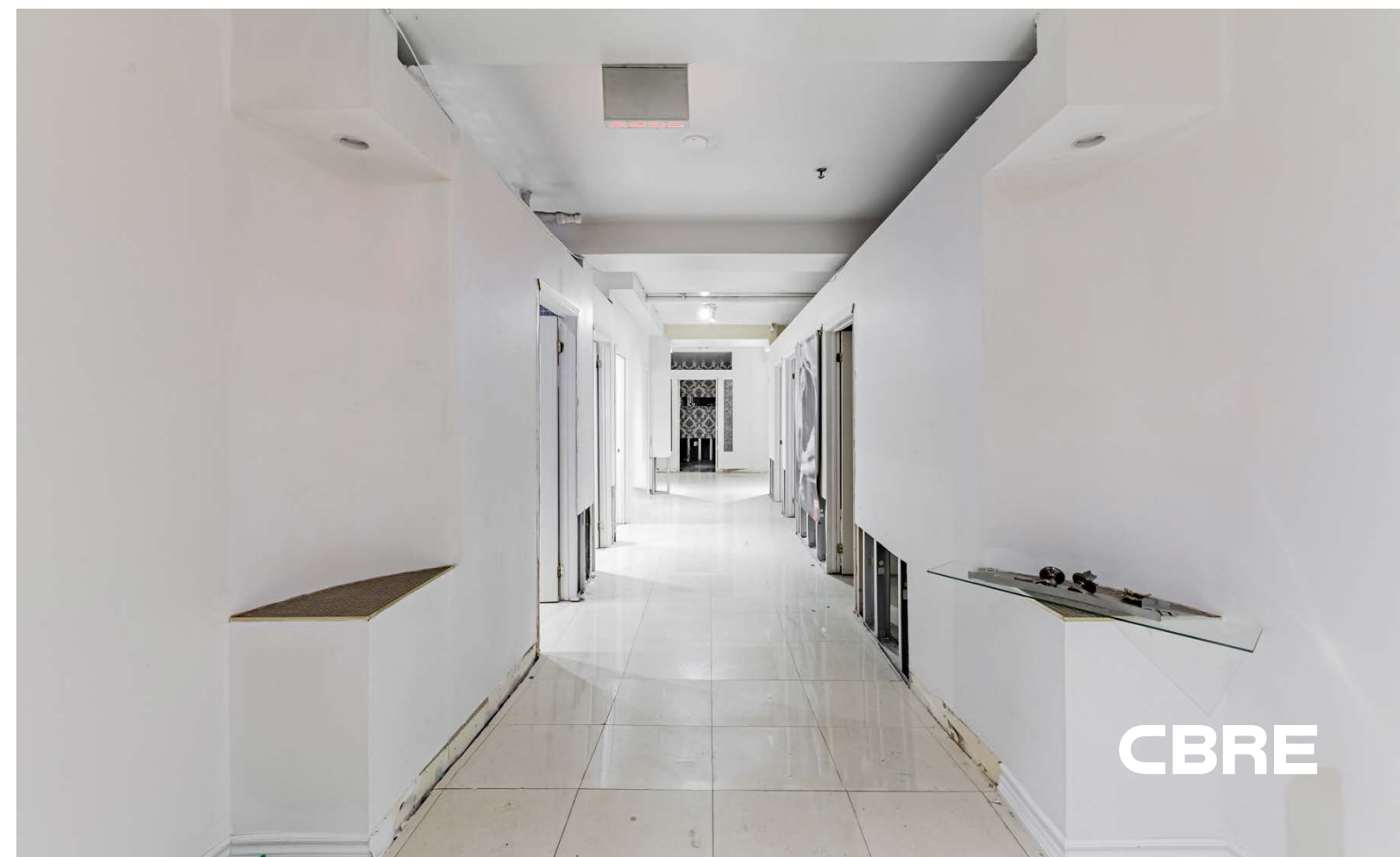
Address: 239 Yonge Street, Toronto

Size: 3,848 sq. ft.

Gross Rent: \$10,000/month

Available: Immediately





DUNDAS STREET WEST

CF TORONTO
EATON CENTRE

- H&M
- BEST BUY
- UNIQLO
- ZARA
- BABATON
- AESOP
- ROOTS
- KIT & ACE
- CLUB MONACO
- ALL SAINTS
- INDIGO
- LULULEMON
- SEPHORA
- OVO
- ARC'TERYX
- COACH
- WARBY PARKER
- SANDRO
- MAJE
- HARRY ROSEN
- KATE SPADE
- MICHAEL KORS
- JO MALONE LONDON
- CANADA GOOSE
- OAK + FORT
- RUDSAK
- L'INTERVALLE
- LACOSTE
- ABERCROMBIE
- MANGO
- UGG
- RAY BAN
- ARITZIA
- FRANK & OAK
- ADIDAS
- NIKE
- LEVIS

QUEEN STREET WEST

SAKS FIFTH AVENUE

THE BAY

DUNDAS STREET EAST

M

Yonge-Dundas Square

Outdoor hub for live entertainment

DUNDAS SQUARE

- SHOPPERS DRUG MART
- 3 BREWERS
- POPEYE'S CHICKEN
- GAMESTOP
- ED MIRVISH THEATRE
- PARAMOUNT
- OCTO ZONE ARCADE
- BURGER KING
- MONEY MART
- 239 YONGE STREET**
- STAG SHOP
- HAIDILAO HOT POT
- URBAN OUTFITTERS
- SWEAT AND TONIC

SHUTER STREET

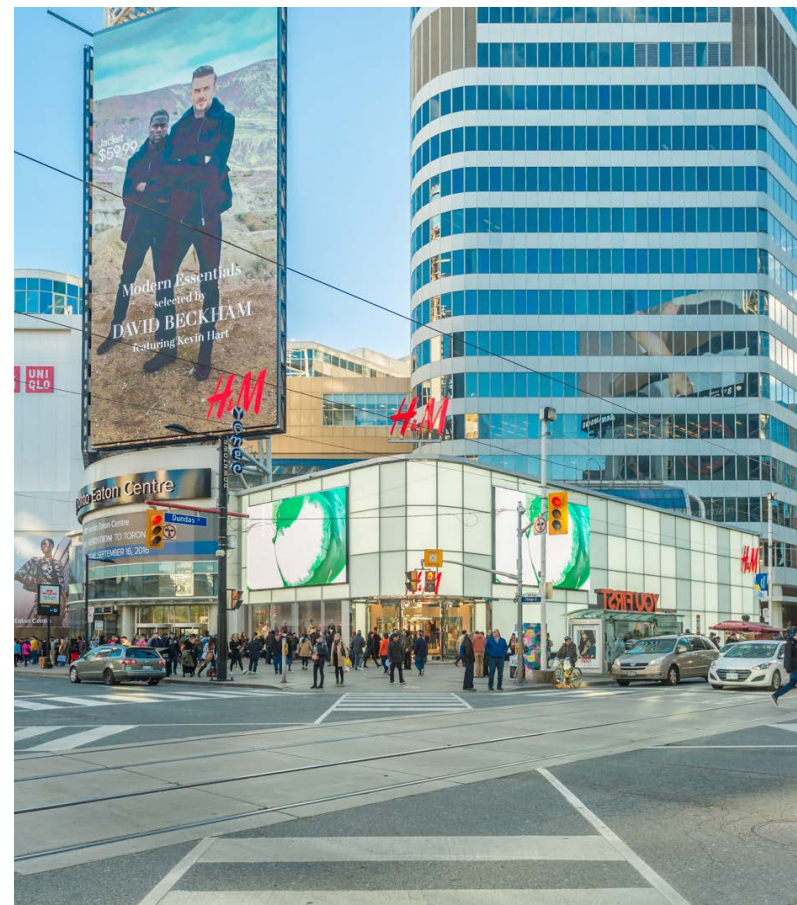
- EASY FINANCIAL
- CIRCLE K
- FIRKIN ON YONGE
- MASSEY TOWERS
- HOMESENSE
- ELGIN THEATRE
- DAWSON DENTAL
- BMO
- SALUS FRESH FOOD

QUEEN STREET WEST

ONE QUEEN EAST

YONGE STREET

M



TORONTO
CITY HALL

TORONTO
METROPOLITAN
UNIVERSITY

YONGE-DUNDAS
SQUARE

239 Yonge
Street

CF TORONTO
EATON CENTRE

ST. MICHAEL'S
HOSPITAL



Contact

ARLIN MARKOWITZ*
Executive Vice President
416 815 2374
arlin.markowitz@cbre.com

ALEX EDMISON*
Senior Vice President
416 874 7266
alex.edmison@cbre.com

JACKSON TURNER**
Senior Vice President
416 815 2394
jackson.turner@cbre.com

TEDDY TAGGART*
Vice President
416 847 3254
teddy.taggart@cbre.com

EMILY EVERETT
Sales Representative
647 943 4185
emily.everett@cbre.com

*Sales Representative

**Broker

CBRE urban retail team

This disclaimer shall apply to CBRE Limited, Real Estate Brokerage, and to all other divisions of the Corporation; to include all employees and independent contractors ("CBRE"). The information set out herein, including, without limitation, any projections, images, opinions, assumptions and estimates obtained from third parties (the "Information") has not been verified by CBRE, and CBRE does not represent, warrant or guarantee the accuracy, correctness and completeness of the Information. CBRE does not accept or assume any responsibility or liability, direct or consequential, for the Information or the recipient's reliance upon the Information. The recipient of the Information should take such steps as the recipient may deem necessary to verify the Information prior to placing any reliance upon the Information. The Information may change and any property described in the Information may be withdrawn from the market at any time without notice or obligation to the recipient from CBRE. CBRE and the CBRE logo are the service marks of CBRE Limited and/or its affiliated or related companies in other countries. All other marks displayed on this document are the property of their respective owners. All Rights Reserved.