

28eastern

PRIME RETAIL FOR LEASE
DOWNTOWN EAST TORONTO



CBRE urban retail team

28eastern

PRIME RETAIL FOR LEASE

Address: 28 Eastern Avenue, Toronto

Size: Unit A: 4,730 sq. ft.
Unit B: 4,028 sq. ft.
Unit C: 817 sq. ft.

Units may be combined to form one 9,575 sq. ft. unit

Net Rent: \$40.00 per sq. ft.

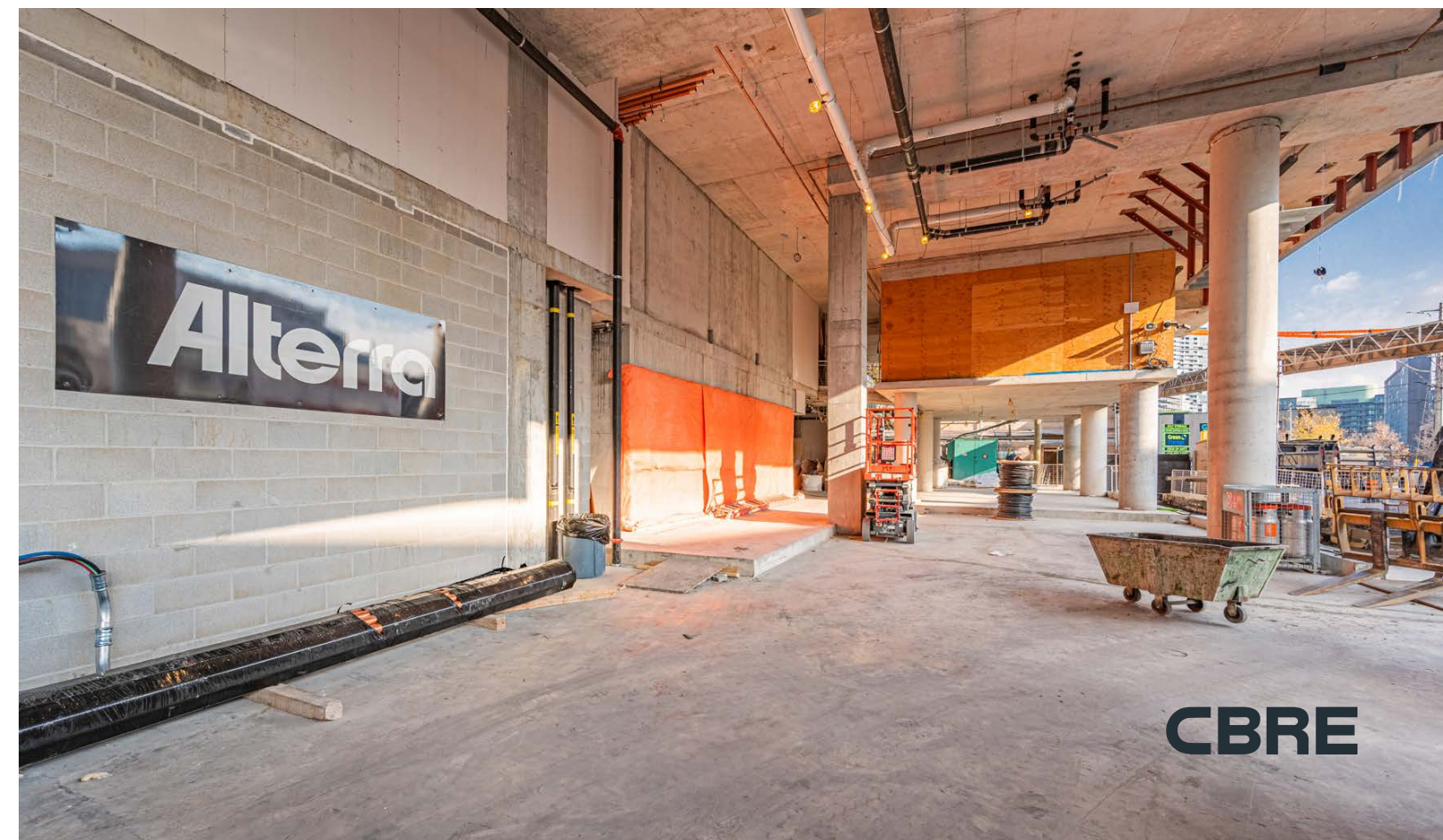
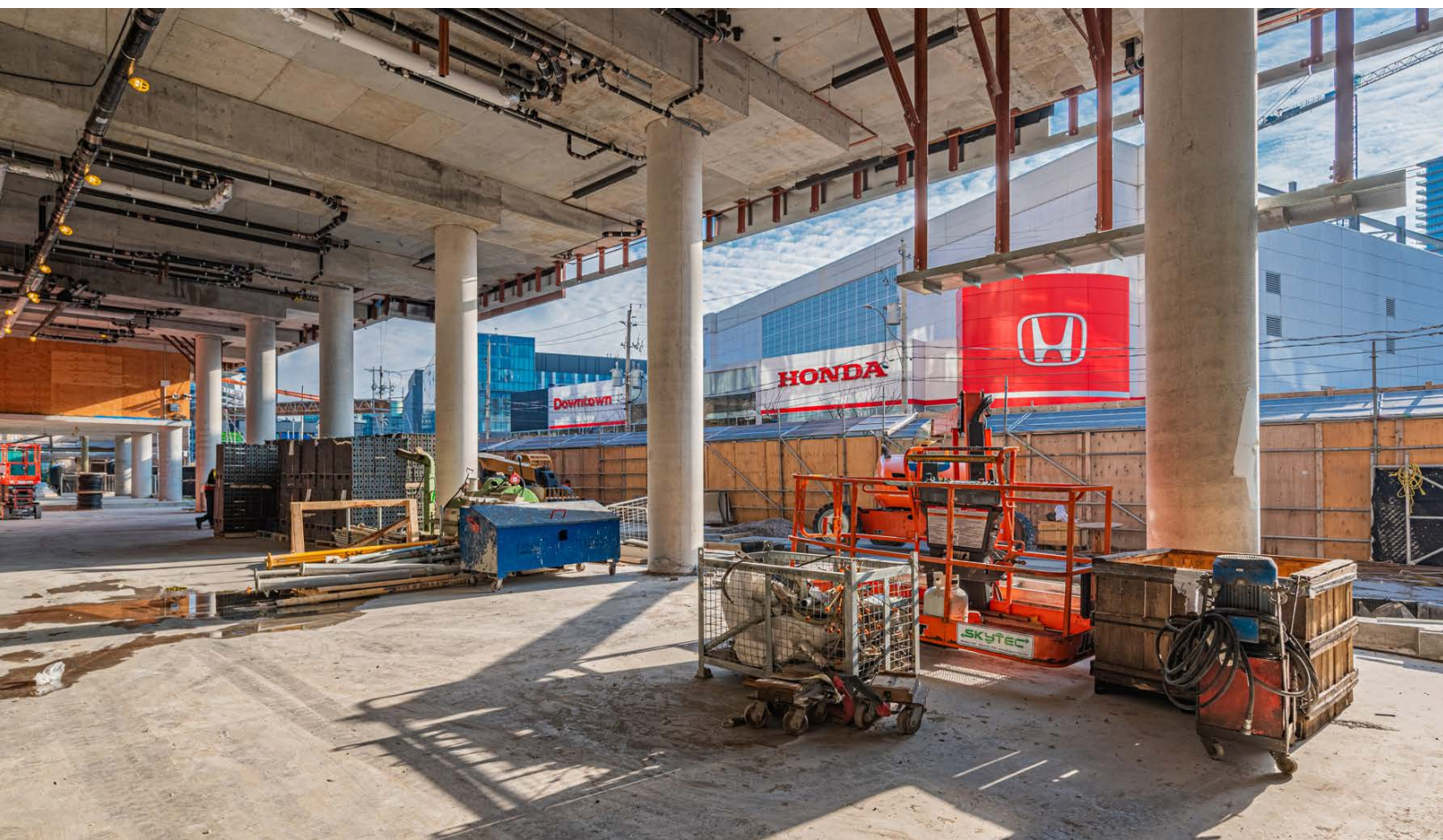
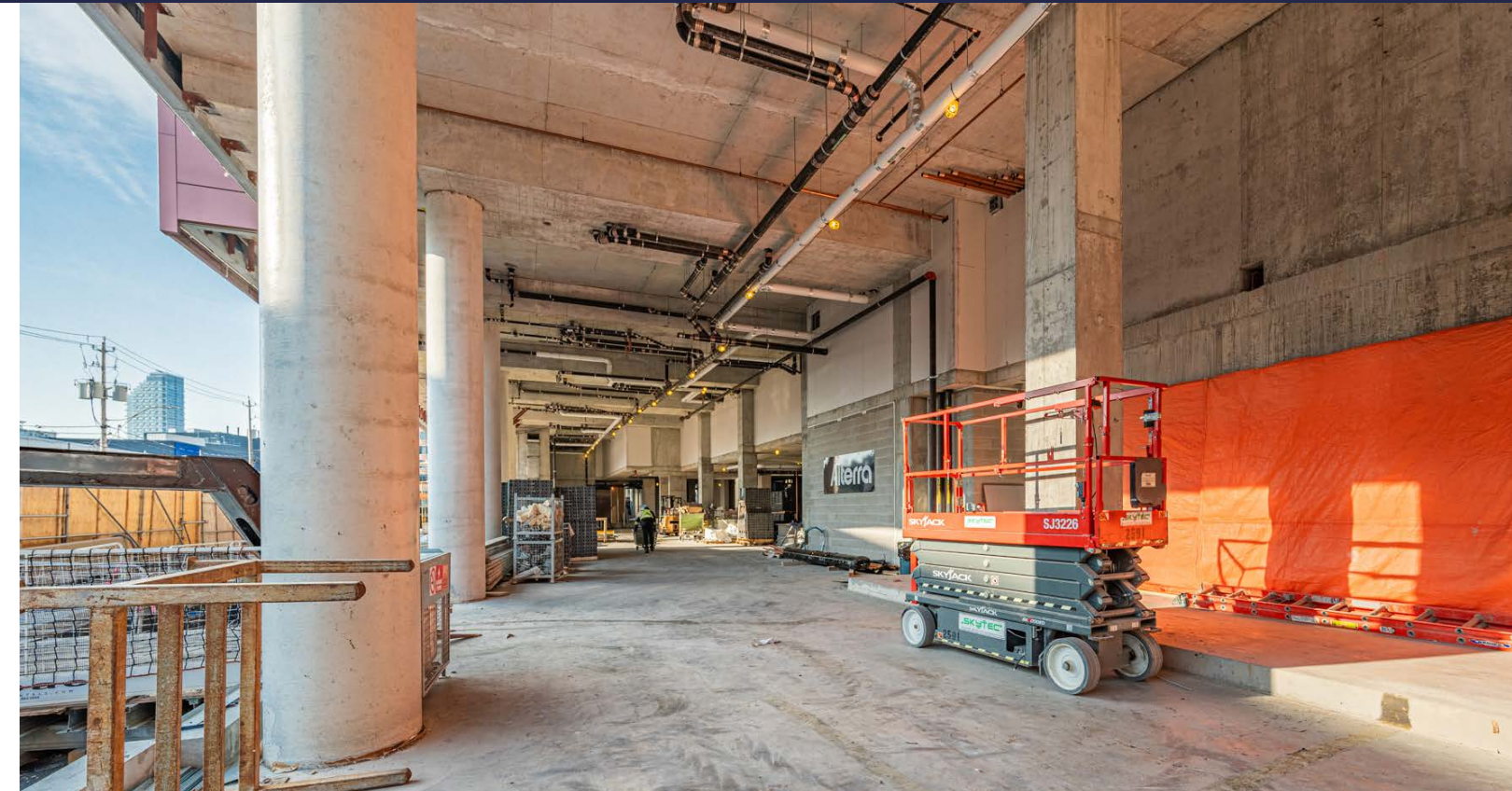
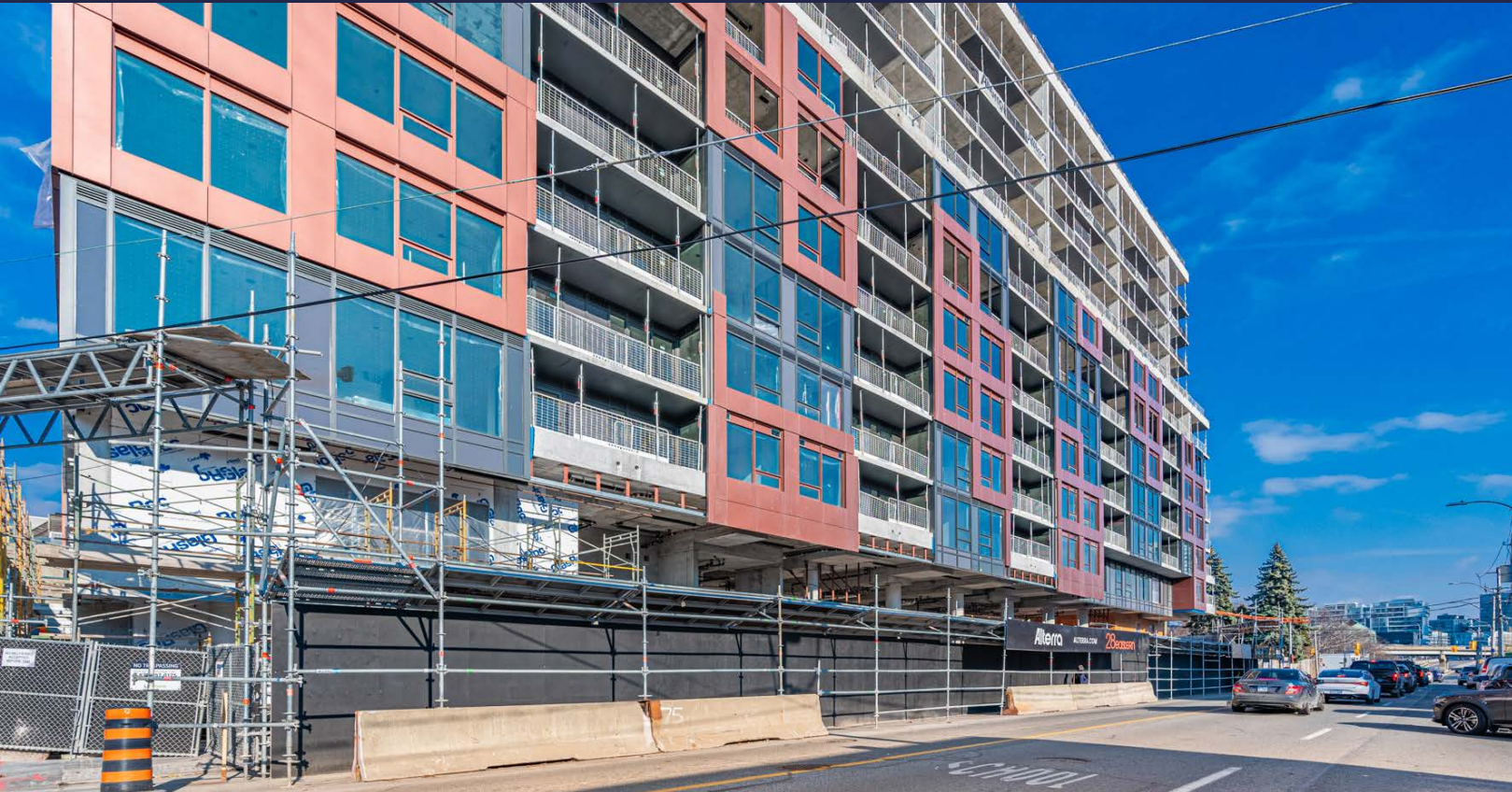
TMI: \$15.00 per sq. ft.

Available: Q1 2025

- Prime retail on the ground level of Alterra's brand new 12-storey mid-rise condominium in Toronto's historic Corktown neighbourhood
- 120 feet of frontage onto Eastern Avenue
- Type G/B Loading
- 22.25 ft. ceiling heights
- Neighbouring retailers include Spaccio (Terroni), Gusto 501, Roselle Desserts, Body Blitz and Bar Reyna
- Proximity to George Brown College, the future Corktown Subway Station, Distillery District, Corktown Commons, King East and St. Lawrence Market



CONSTRUCTION STATUS: NOVEMBER 2023



FLOOR PLAN | 9,575 SF



GILEAD PLACE



SACKVILLE STREET

EASTERN AVENUE

CORKTOWN

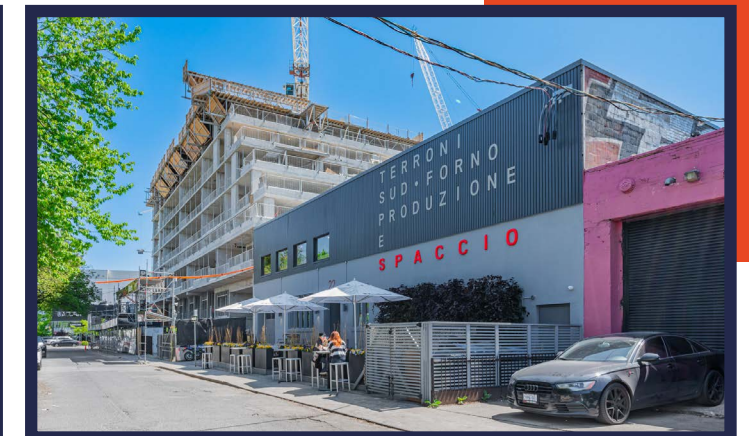
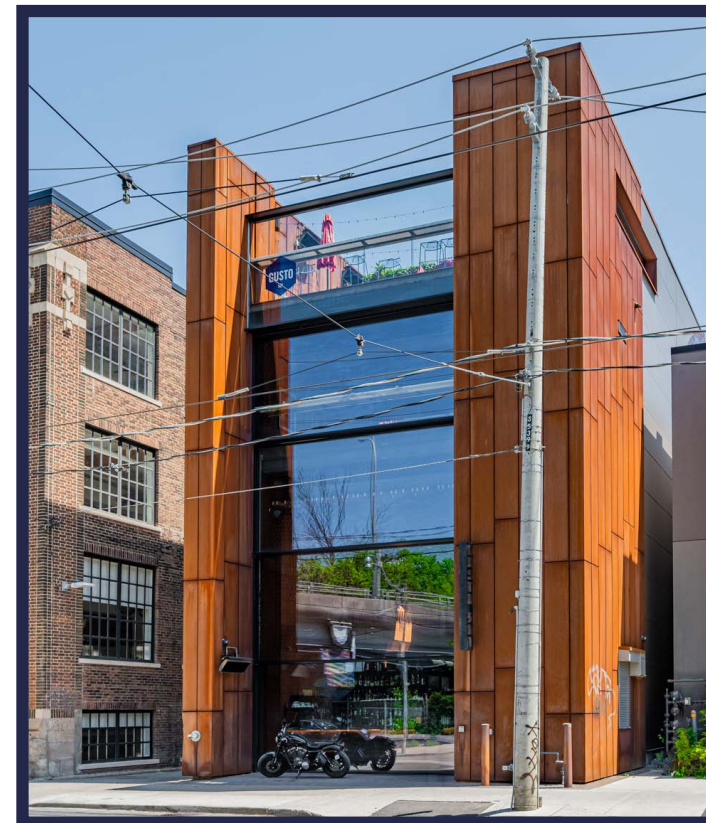
A Neighbourhood on the Rise

28 Eastern Avenue is located in Downtown East in the heart of Corktown, one of Toronto's oldest neighbourhoods. It has become a popular neighbourhood for young professionals due to its central location and easy access to Toronto's business and entertainment districts as well as its proximity to the Distillery District, St. Lawrence Market and Leslieville.

Corktown is home to many beautiful Victorian homes as well as vacated industrial buildings that have since been converted into shops, lofts and studio space that give the neighbourhood added charm. In recent years the area has become a new hot-spot to grab a drink or a bite to eat thanks to Gusto 501, Spaccio (Terroni), Alo, Reyna and other popular local spots making Corktown home.

Downtown East has seen remarkable growth and significant change in the past ten years. There are currently several large scale office developments and residential condominiums in various stages of development in the neighbourhood. Future growth will only be further fueled by the addition of a subway station in the neighbourhood. Corktown subway station, part of the new 15.6 km Ontario Line, will be built only steps from 28 Eastern Avenue at the corner of King and Berkeley. This station will be part of the new 15.6 km Ontario Line, which will run between Exhibition Place, through downtown and all the way north to the Ontario Science Centre.

NEIGHBOURING TENANTS



ACTIVE AREA DEVELOPMENTS

2,970 incoming residential units



Union Station

Distillery District
4 mins 🚶

Future Corktown Station
5 mins 🚶

Home on Power
Under Construction
522 Units

West Don Lands Block 3,4,7
Under Construction
855 Units

28eastern
379 Units

West Don Lands Block 8
Under Construction
770 Units

West Don Lands Block 10
Under Construction
444 Units



28eastern

ARLIN MARKOWITZ*
Executive Vice President
416 815 2374
arlin.markowitz@cbre.com

ALEX EDMISON*
Senior Vice President
416 874 7266
alex.edmison@cbre.com

JACKSON TURNER**
Senior Vice President
416 815 2394
jackson.turner@cbre.com

TEDDY TAGGART*
Vice President
416 847 3254
teddy.taggart@cbre.com

EMILY EVERETT
Sales Representative
647 943 4185
emily.everett@cbre.com

CBRE

*Sales Representative **Broker

This disclaimer shall apply to CBRE Limited, Real Estate Brokerage, and to all other divisions of the Corporation; to include all employees and independent contractors ("CBRE"). The information set out herein, including, without limitation, any projections, images, opinions, assumptions and estimates obtained from third parties (the "Information") has not been verified by CBRE, and CBRE does not represent, warrant or guarantee the accuracy, correctness and completeness of the Information. CBRE does not accept or assume any responsibility or liability, direct or consequential, for the Information or the recipient's reliance upon the Information. The recipient of the Information should take such steps as the recipient may deem necessary to verify the Information prior to placing any reliance upon the Information. The Information may change and any property described in the Information may be withdrawn from the market at any time without notice or obligation to the recipient from CBRE. CBRE and the CBRE logo are the service marks of CBRE Limited and/or its affiliated or related companies in other countries. All other marks displayed on this document are the property of their respective owners. All Rights Reserved.