

# 1960 Yonge

RETAIL FOR LEASE AT YONGE & DAVISVILLE



**CBRE** urban retail team

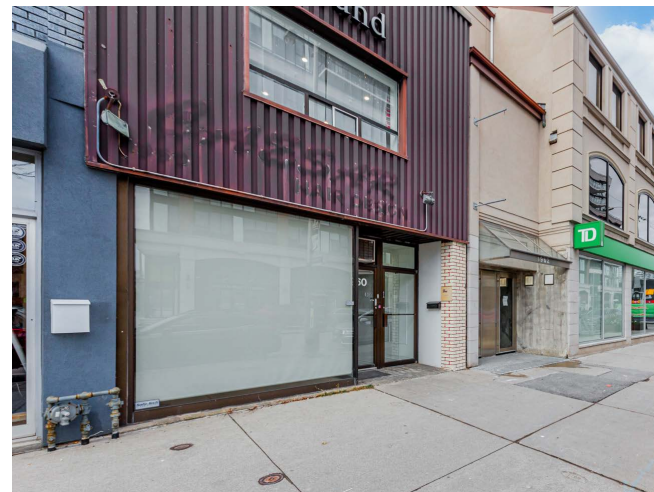
# 1960 Yonge

RETAIL FOR LEASE AT YONGE & DAVISVILLE

## PROPERTY DETAILS

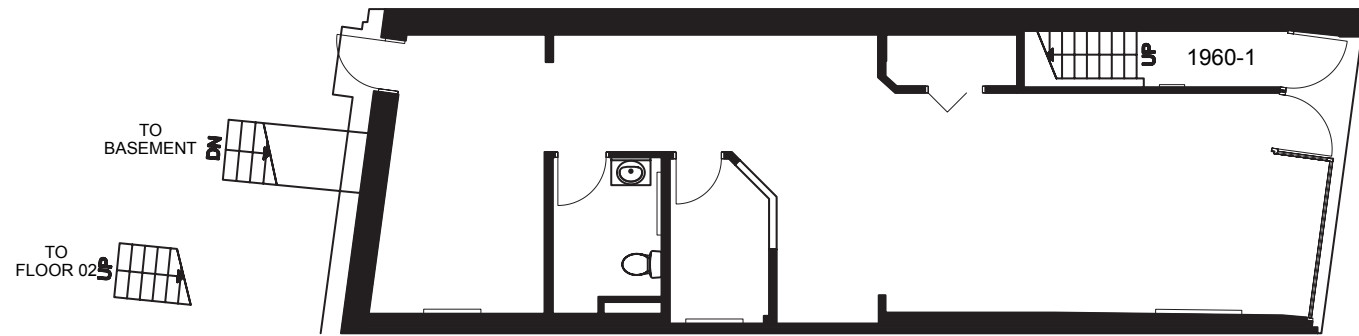
Address:	1960 Yonge Street, Toronto
Size:	Ground: 835 sq. ft. Lower: 724 sq. ft.
Gross Rent:	\$5,500/per month (Utilities not included)
Available:	Immediately

- Prime ground level retail in Davisville Village
- Lower level included free of charge
- Steps to Davisville subway station
- 10-minute walk to Yonge & Eglinton
- Direct neighbouring tenants include LCBO, Tim Hortons, TD Bank, Cobs Bread, Plenty Cafe, Burrito Boyz and Sobeys grocery

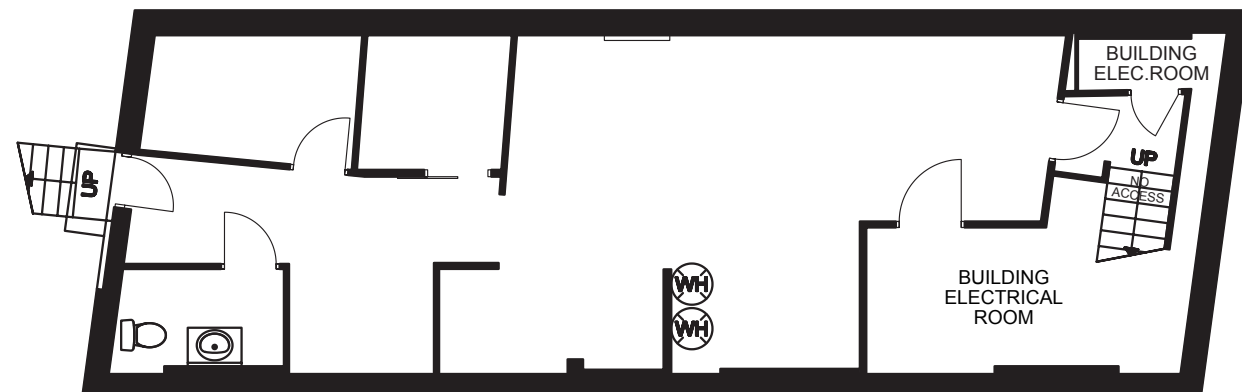


# Floor Plans

GROUND FLOOR | 835 SF



LOWER LEVEL | 724 SF



CONDO DEVELOPMENT •



west elm

HILLSDALE AVENUE

UOVO RESIDENCES •

PEPPERMILLS •

PLRG •

DAVES HOT CHICKEN •

LOLA ROAD



**STRUCTUBE**

2000 YONGE DENTAL •

PIZZA SHAB •

RITCHIE FRAME ART GALLERY •

IMPERIAL STREET



NEVIZADE KITCHEN & BAR •

SUBWAY •



DAVISVILLE AVE

DAVISVILLE SUBWAY STATION



TORONTO TRANSIT  
COMMISSION HEAD OFFICE



THE HUNNY POT  
CANNABIS CO.



MANOR ROAD EAST

- SKIS AND BIKES
- CHESTERFIELD SHOP
- LITTLE SISTER FOOD BAR

GLEBE ROAD

- SLAYER BURGER



BELSIZE ROAD

- COBS BREAD
- CAFE PLENTY

LCBO

- WORLD OF HEARING

MILLWOOD ROAD

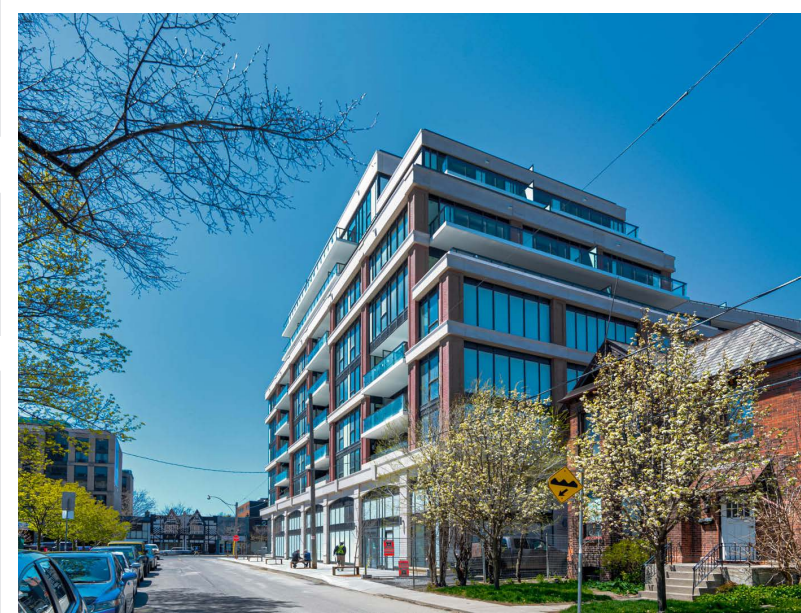
- PIZZA PIZZA
- HOT BLACK COFFEE
- KRAMER'S BAR & GRILL
- CIRCLES & SQUARES BAKERY



- GUARDIAN PHARMACY
- SECOND CUP
- SOBEYS

BALLIOL STREET

- TAMASHA INDIAN RESTO BAR
- THE BULL FIRKIN PUB



# 1960 Yonge

## Contact

---

ARLIN MARKOWITZ\*  
Executive Vice President  
416 815 2374  
arlin.markowitz@cbre.com

ALEX EDMISON\*  
Senior Vice President  
416 874 7266  
alex.edmison@cbre.com

JACKSON TURNER\*\*  
Senior Vice President  
416 815 2394  
jackson.turner@cbre.com

TEDDY TAGGART\*  
Vice President  
416 847 3254  
teddy.taggart@cbre.com

EMILY EVERETT  
Sales Representative  
647 943 4185  
emily.everett@cbre.com

\*Sales Representative

\*\*Broker

## **CBRE** urban retail team

This disclaimer shall apply to CBRE Limited, Real Estate Brokerage, and to all other divisions of the Corporation; to include all employees and independent contractors ("CBRE"). The information set out herein, including, without limitation, any projections, images, opinions, assumptions and estimates obtained from third parties (the "Information") has not been verified by CBRE, and CBRE does not represent, warrant or guarantee the accuracy, correctness and completeness of the Information. CBRE does not accept or assume any responsibility or liability, direct or consequential, for the Information or the recipient's reliance upon the Information. The recipient of the Information should take such steps as the recipient may deem necessary to verify the Information prior to placing any reliance upon the Information. The Information may change and any property described in the Information may be withdrawn from the market at any time without notice or obligation to the recipient from CBRE. CBRE and the CBRE logo are the service marks of CBRE Limited and/or its affiliated or related companies in other countries. All other marks displayed on this document are the property of their respective owners. All Rights Reserved.