

501 *BLOOR* *STREET*

PRIME RETAIL FOR LEASE IN THE HEART OF THE ANNEX



CBRE urban retail team

501 BLOOR STREET

PRIME RETAIL FOR LEASE IN THE HEART OF THE ANNEX

PROPERTY DETAILS

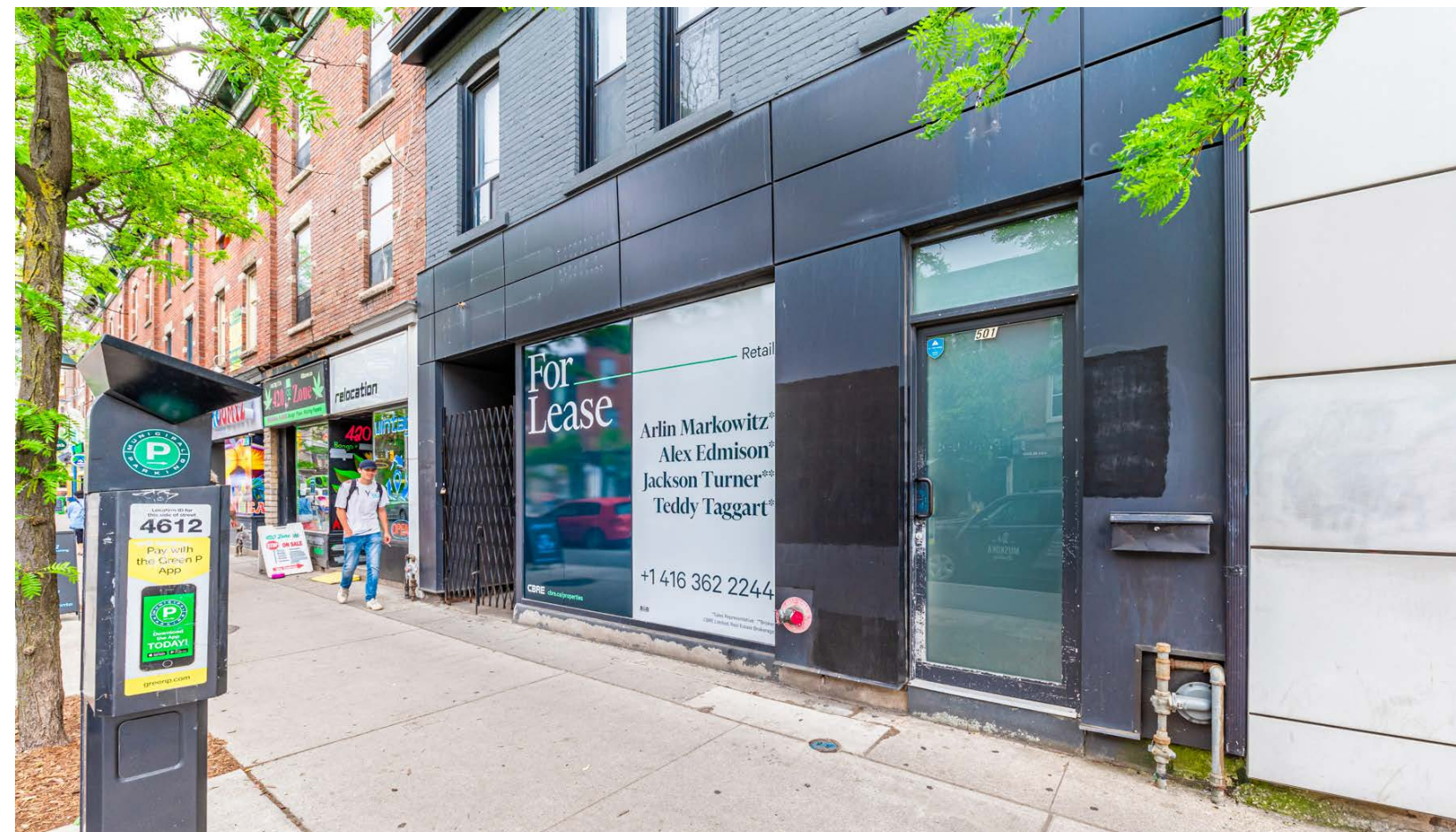
Size: 2,789 sq. ft.

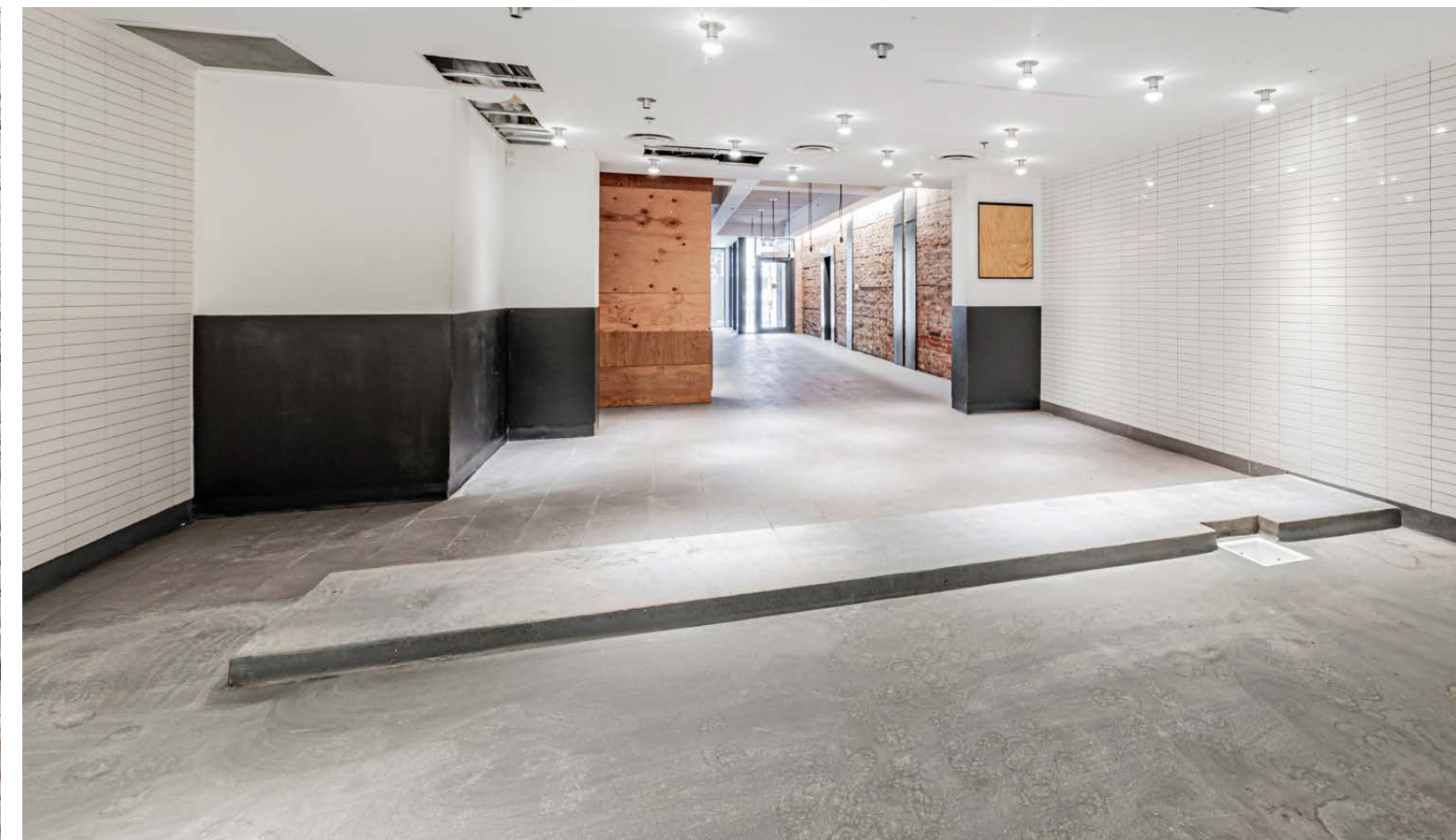
Net Rent: \$40.00 per sq. ft.

TMI: \$23.17 per sq. ft.

Available: Immediately

- + Premium and newly renovated space in the best section of the Annex, seconds from the University of Toronto campus, Bathurst TTC station, Yorkville and Mirvish Village
- + The site benefits from exceptionally high vehicular and pedestrian traffic and boasts extensive frontage of 26 feet





LOCATION OVERVIEW

THE ANNEX

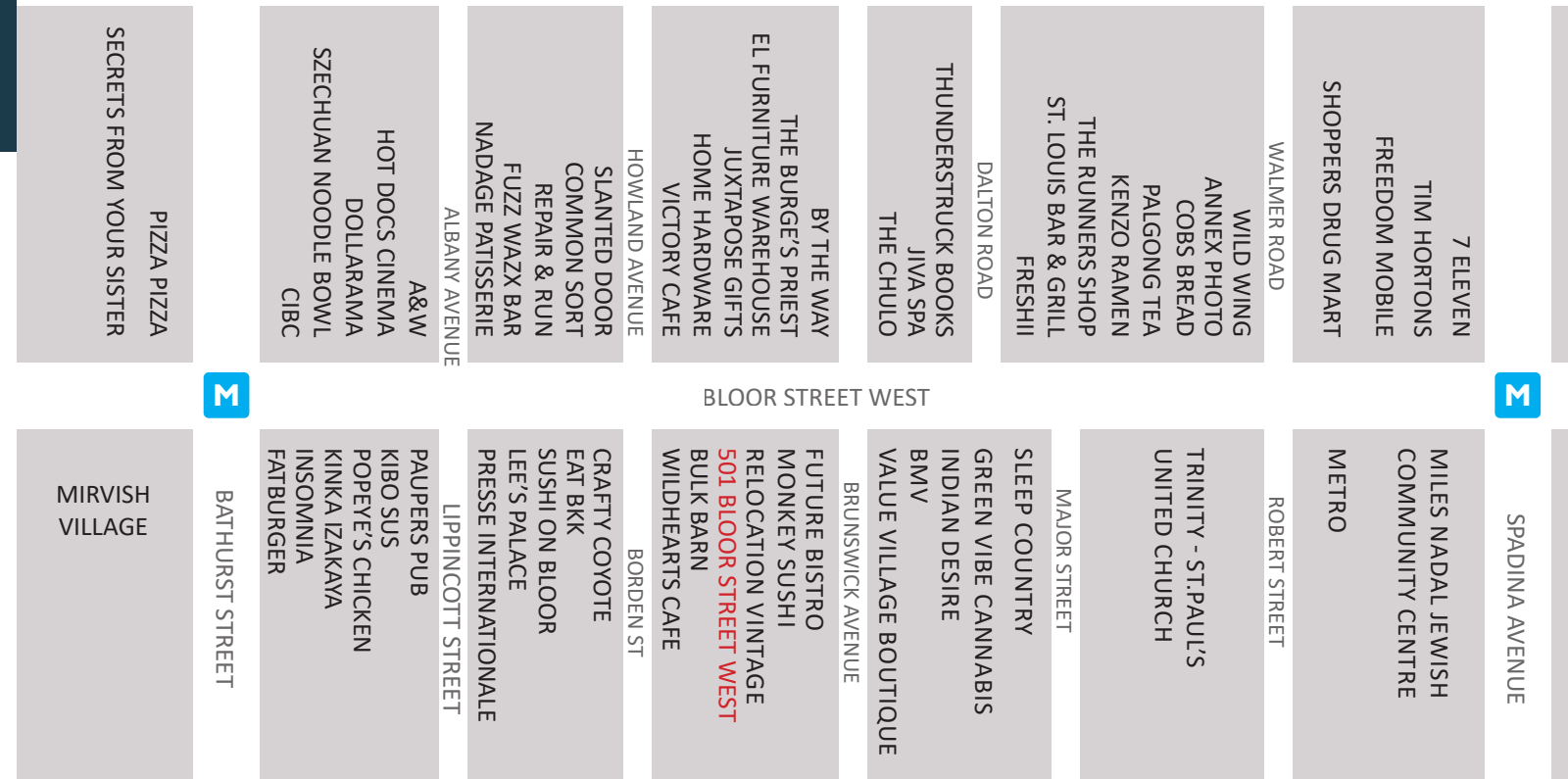
Located in the heart of Toronto, The Annex is a neighborhood that offers a unique blend of historical charm, cultural diversity, and bustling urban energy. The area is known for its beautiful Victorian homes, leafy streets, and a strong sense of community.

Bloor Street West is at the heart of The Annex, which is a vibrant retail strip offering a range of shopping, dining, and entertainment options. This area caters to the significant student population from the University of Toronto.

501 Bloor Street West is situated in a prime location in The Annex, between Bathurst Street and Spadina Street. It benefits from a significant amount of pedestrian traffic and exposure to more than 40,000 vehicles per day. The location is easily accessible from anywhere in the city with access to both the Spadina and Bathurst Subway Stations.



NEIGHBOURING RETAILERS



501 *BLOOR* STREET

ADIVSORY TEAM

ARLIN MARKOWITZ*
Executive Vice President
416 815 2374
arlin.markowitz@cbre.com

ALEX EDMISON*
Senior Vice President
416 874 7266
alex.edmison@cbre.com

JACKSON TURNER**
Senior Vice President
416 815 2394
jackson.turner@cbre.com

TEDDY TAGGART*
Vice President
416 847 3254
teddy.taggart@cbre.com

EMILY EVERETT
Sales Representative
647 943 4185
emily.everett@cbre.com

*Sales Representative **Broker

CBRE urban retail team

This disclaimer shall apply to CBRE Limited, Real Estate Brokerage, and to all other divisions of the Corporation; to include all employees and independent contractors ("CBRE"). The information set out herein, including, without limitation, any projections, images, opinions, assumptions and estimates obtained from third parties (the "Information") has not been verified by CBRE, and CBRE does not represent, warrant or guarantee the accuracy, correctness and completeness of the Information. CBRE does not accept or assume any responsibility or liability, direct or consequential, for the Information or the recipient's reliance upon the Information. The recipient of the Information should take such steps as the recipient may deem necessary to verify the Information prior to placing any reliance upon the Information. The Information may change and any property described in the Information may be withdrawn from the market at any time without notice or obligation to the recipient from CBRE. CBRE and the CBRE logo are the service marks of CBRE Limited and/or its affiliated or related companies in other countries. All other marks displayed on this document are the property of their respective owners. All Rights Reserved.