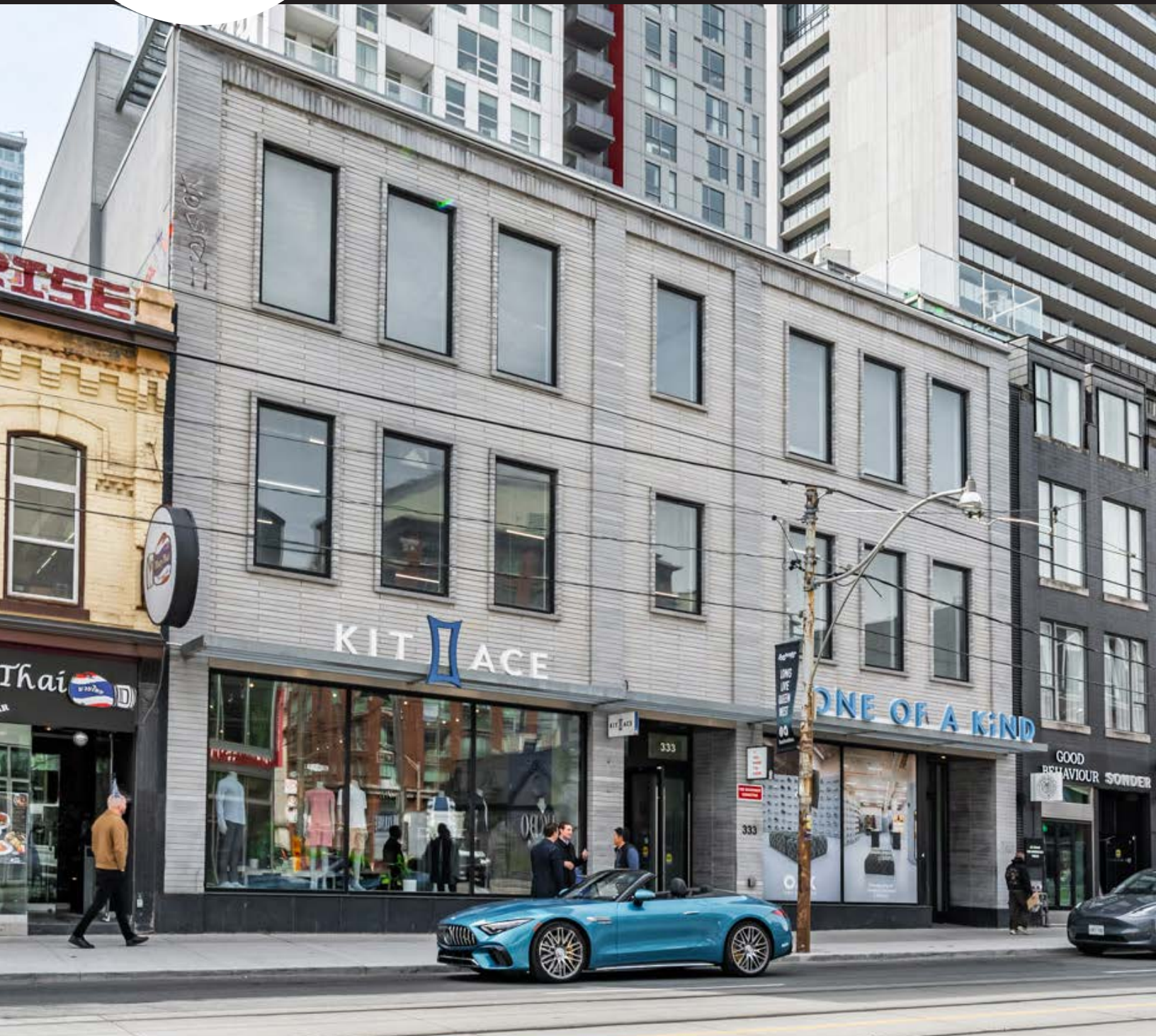


327-333

qsw

327-333 Queen Street West, Toronto

Second & Third Level Space for Lease
On the Prime Stretch of Queen Street West



327-333
qsw

Property Details

Address: 327-333 Queen Street West, Toronto

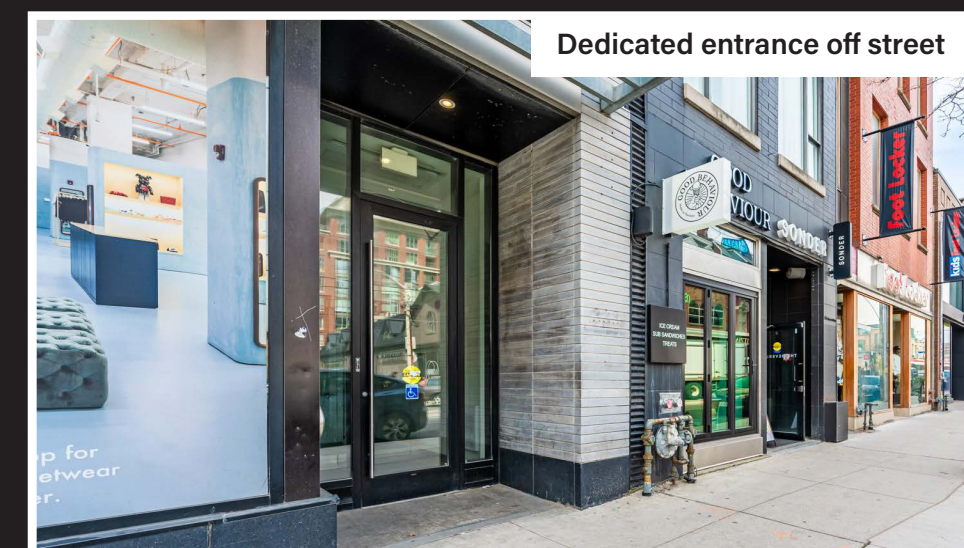
Size: 2nd Level: 5,549 sq. ft.
3rd Level: 3,920 sq. ft.
Total: 9,469 sq. ft.

Net Rent: Please contact listing agents

TMI: \$25.00 per sq. ft.

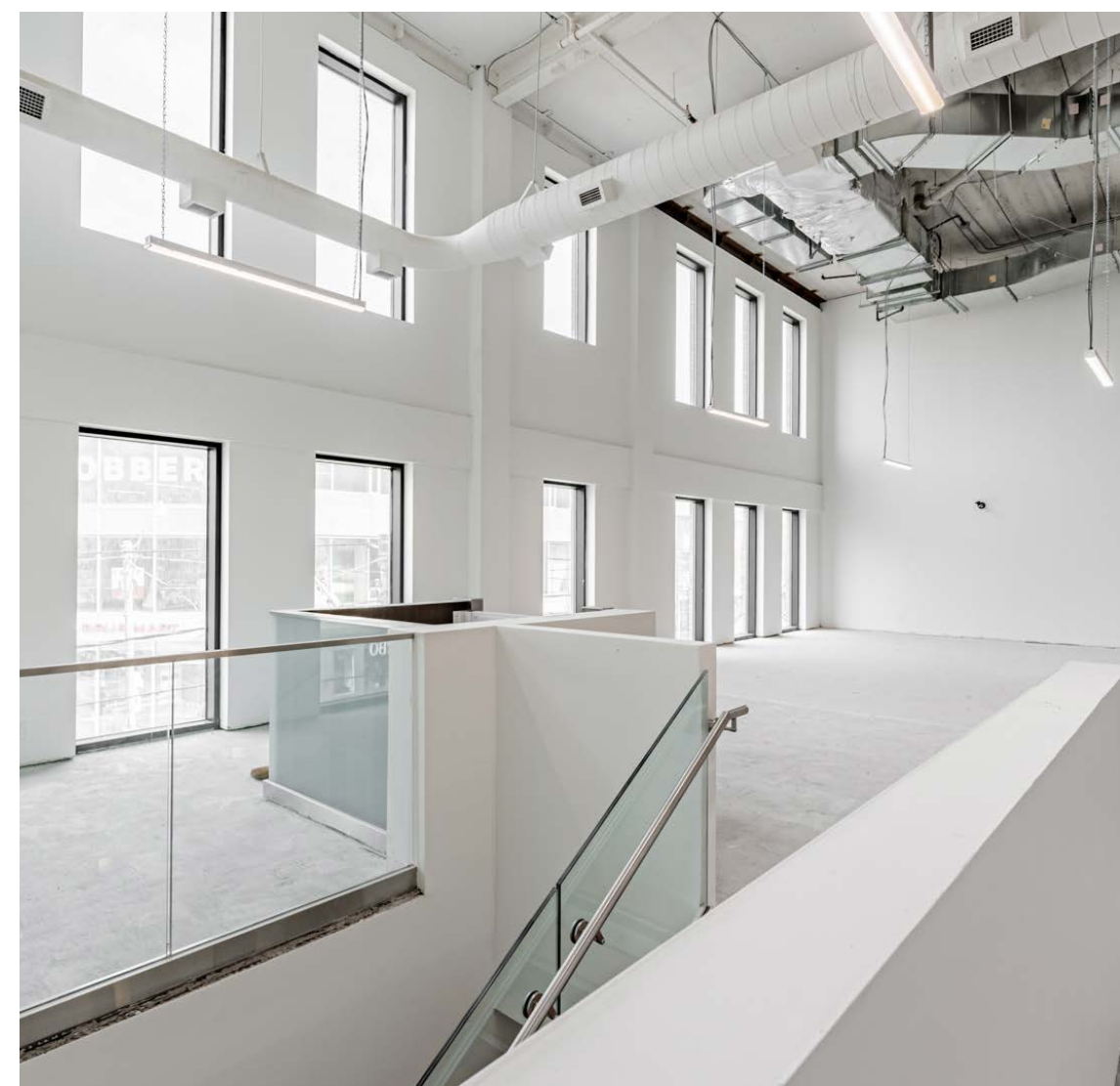
Available: Immediately

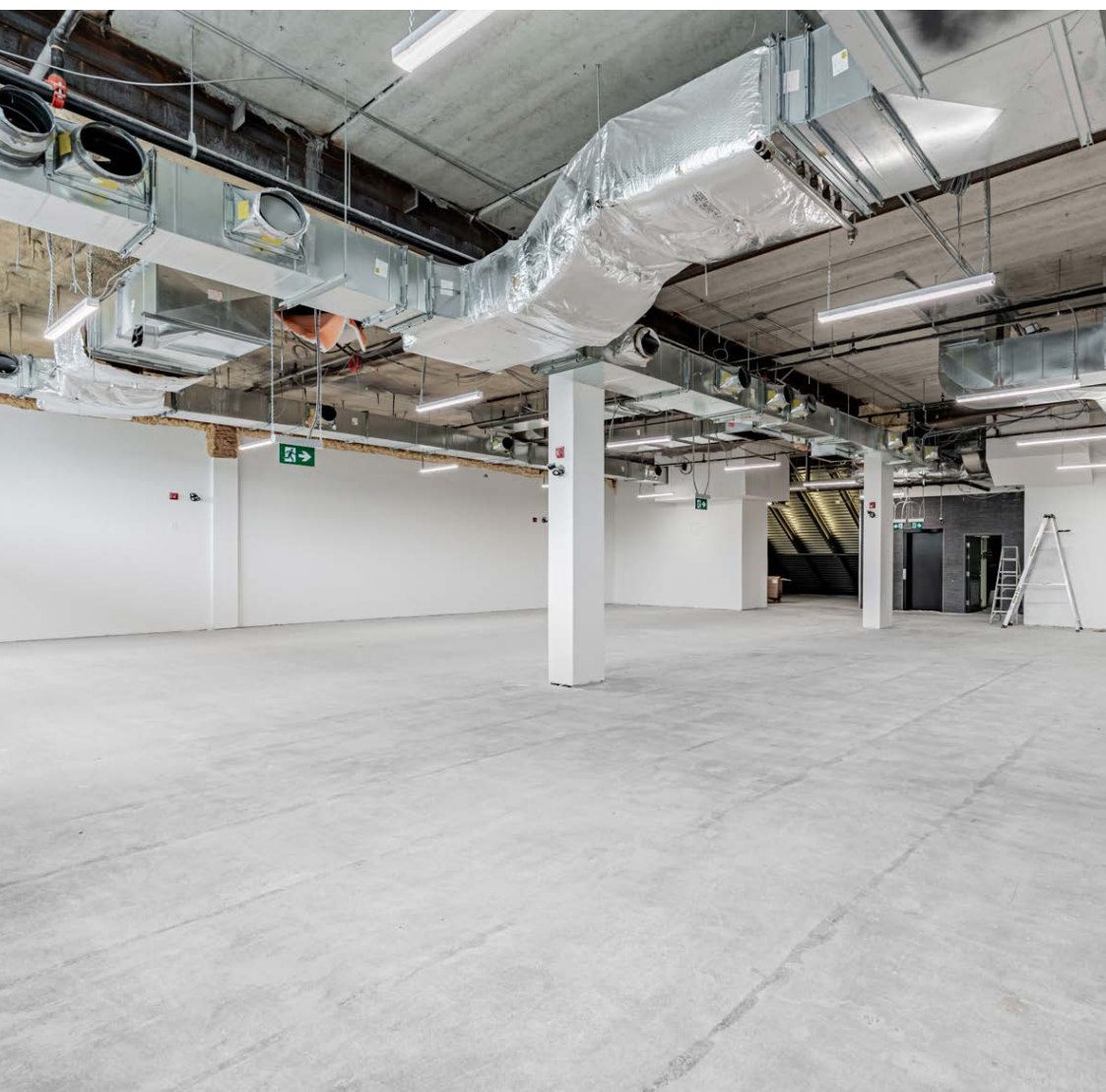
- Second and third level space featuring a private entrance on Queen West
- Incredible ceiling heights
- Steps to Osgoode Subway station
- Located on the best stretch of Queen West, one of Toronto's most prominent retail hubs
- Neighbouring tenants include: Aritzia, Zara, Arc'teryx, Knix, MEC, Chipotle, LCBO, Timbuk2, Shoppers Drug Mart, Chick-fil-A and many more



SECOND LEVEL

5,549 sq. ft.



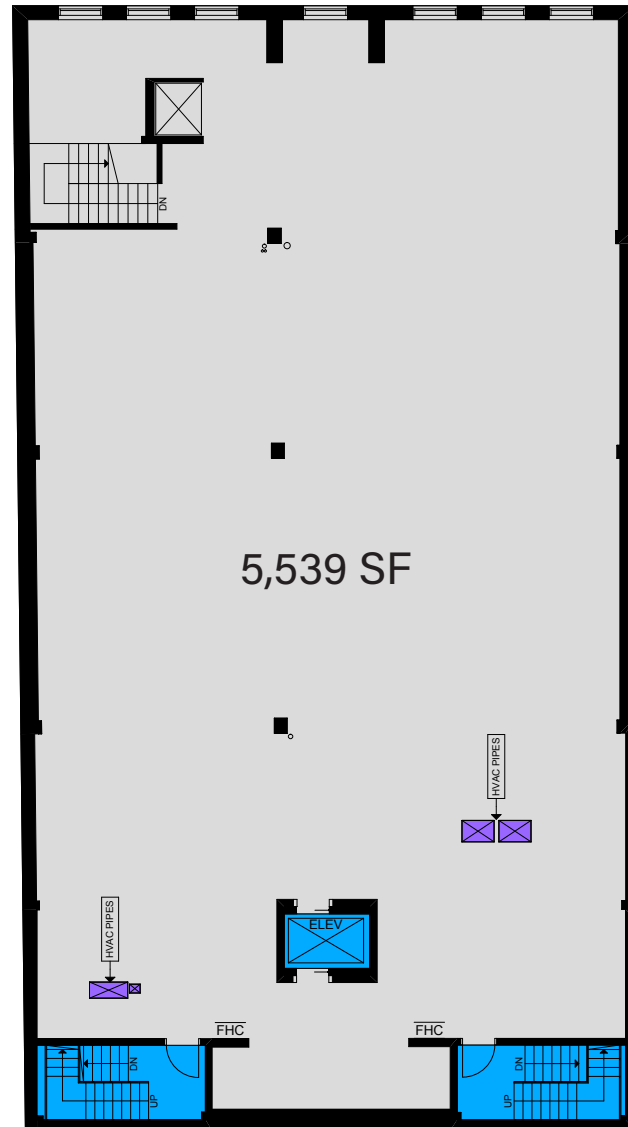


THIRD LEVEL
3,920 sq. ft.

Floor Plans

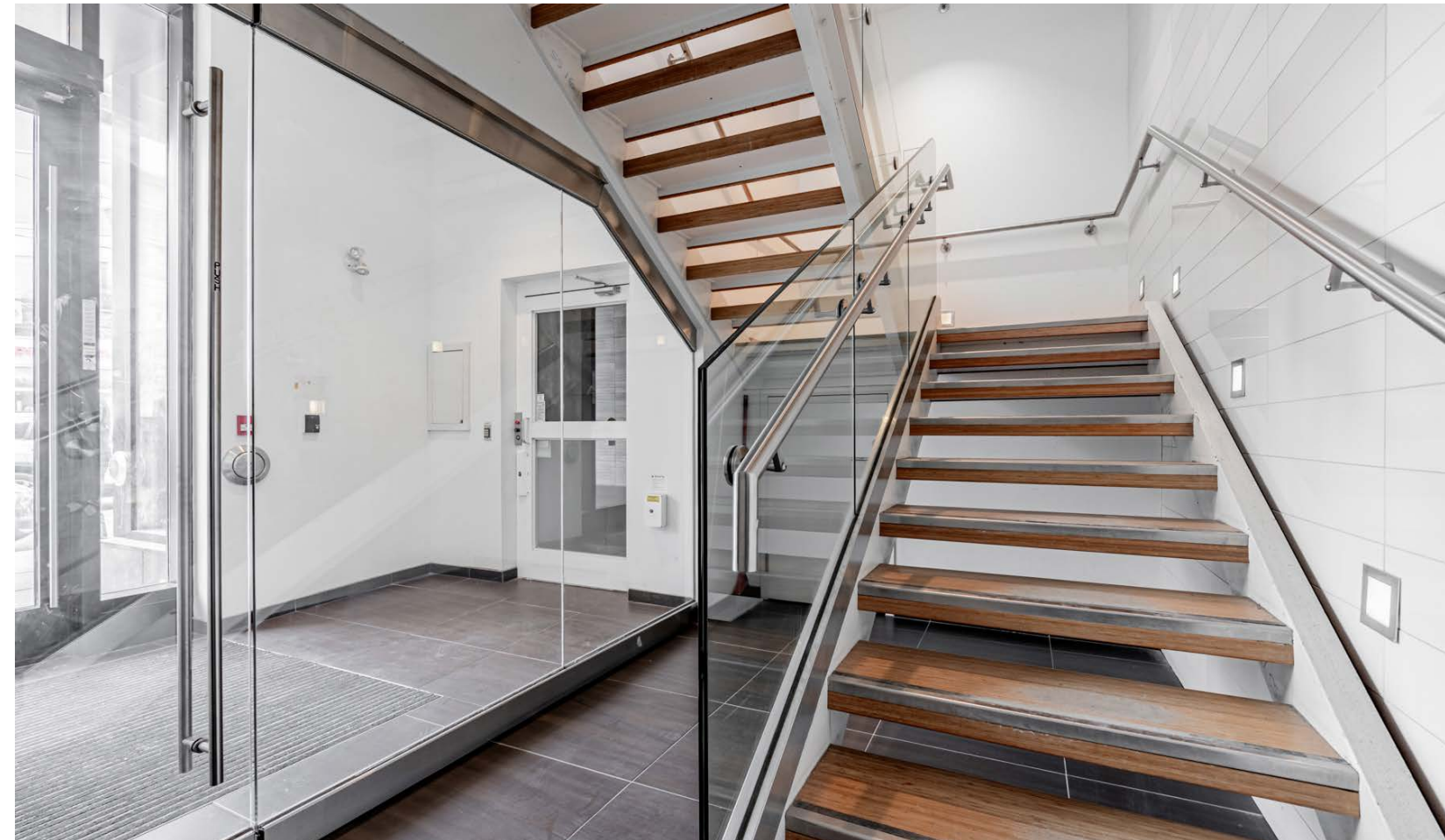
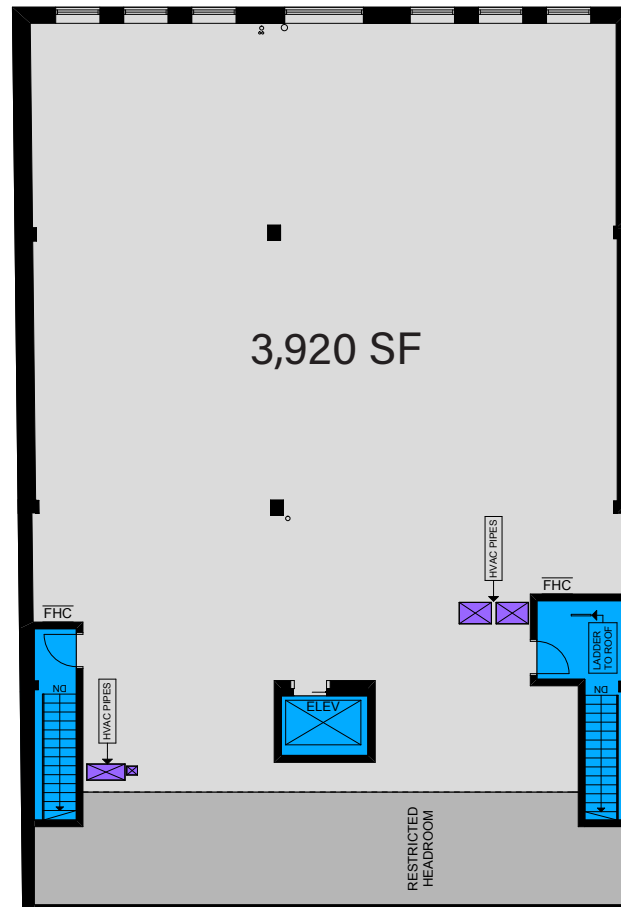
Second Level

Queen Street West



Third Level

Queen Street West



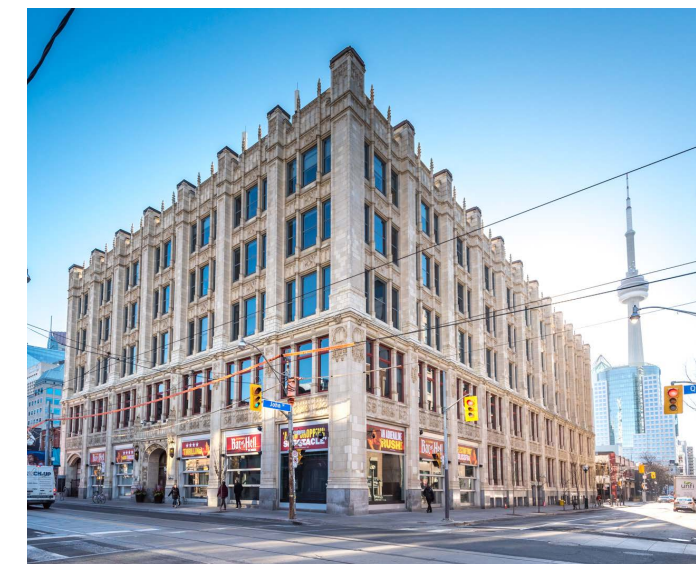


The Location - Queen Street West

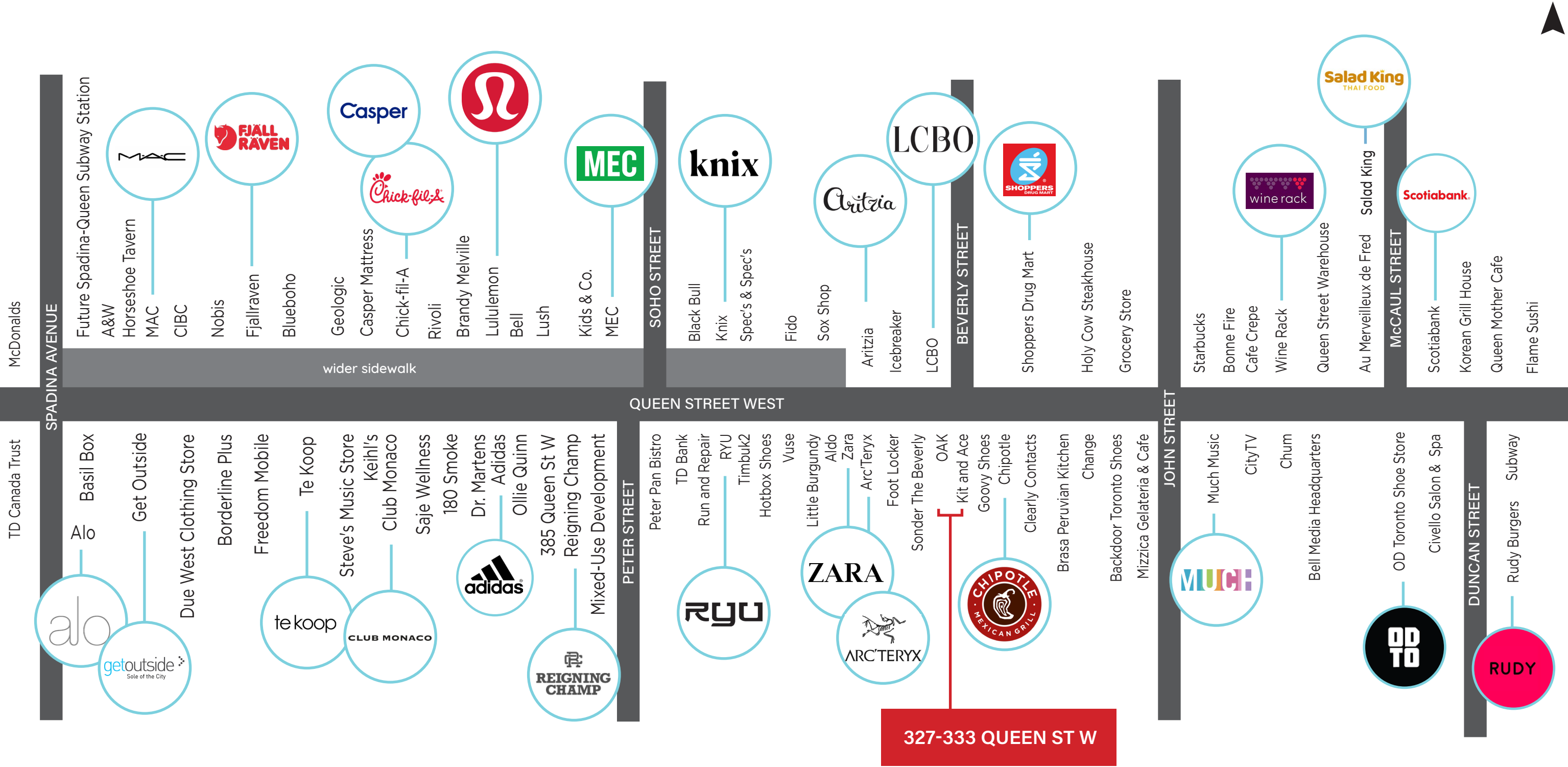
327-333 Queen Street West is located in the heart of one of Canada's most prominent retail hubs, Queen Street West.

Queen West is known for its mix of trendy fashion boutiques and premium international brands including Club Monaco, Aritzia, Zara, Lululemon, MAC, Fjällräven and many more.

Queen West's central location in Downtown Toronto, along with the significant residential/employment growth in the immediate area, allows the node to continue its ability to attract premium retail brands, restaurants and bars creating significant pedestrian traffic seven days week.



Neighbouring Retailers & Traffic Drivers



327-333

qsw



Contact

ARLIN MARKOWITZ*
Executive Vice President
416 815 2374
arlin.markowitz@cbre.com

ALEX EDMISON*
Senior Vice President
416 874 7266
alex.edmison@cbre.com

JACKSON TURNER**
Senior Vice President
416 815 2394
jackson.turner@cbre.com

TEDDY TAGGART*
Vice President
416 847 3254
teddy.taggart@cbre.com

EMILY EVERETT
Sales Representative
647 943 4185
emily.everett@cbre.com

*Sales Representative

**Broker

CBRE

This disclaimer shall apply to CBRE Limited, and to all divisions of the Corporation ("CBRE"). The information set out herein (the "Information") has not been verified by CBRE, and CBRE does not represent, warrant or guarantee the accuracy, correctness and completeness of the Information. CBRE does not accept or assume any responsibility or liability, direct or consequential, for the Information or the recipient's reliance upon the Information. The recipient of the Information should take such steps as the recipient may deem necessary to verify the Information prior to placing any reliance upon the Information. The Information may change and any property described in the Information may be withdrawn from the market at any time without notice or obligation to the recipient from CBRE.