

110  
BLOOR

PRIME RETAIL  
**FOR LEASE**  
ON BLOOR STREET WEST



CUSHMAN &  
WAKEFIELD

CBRE

# 110 BLOOR

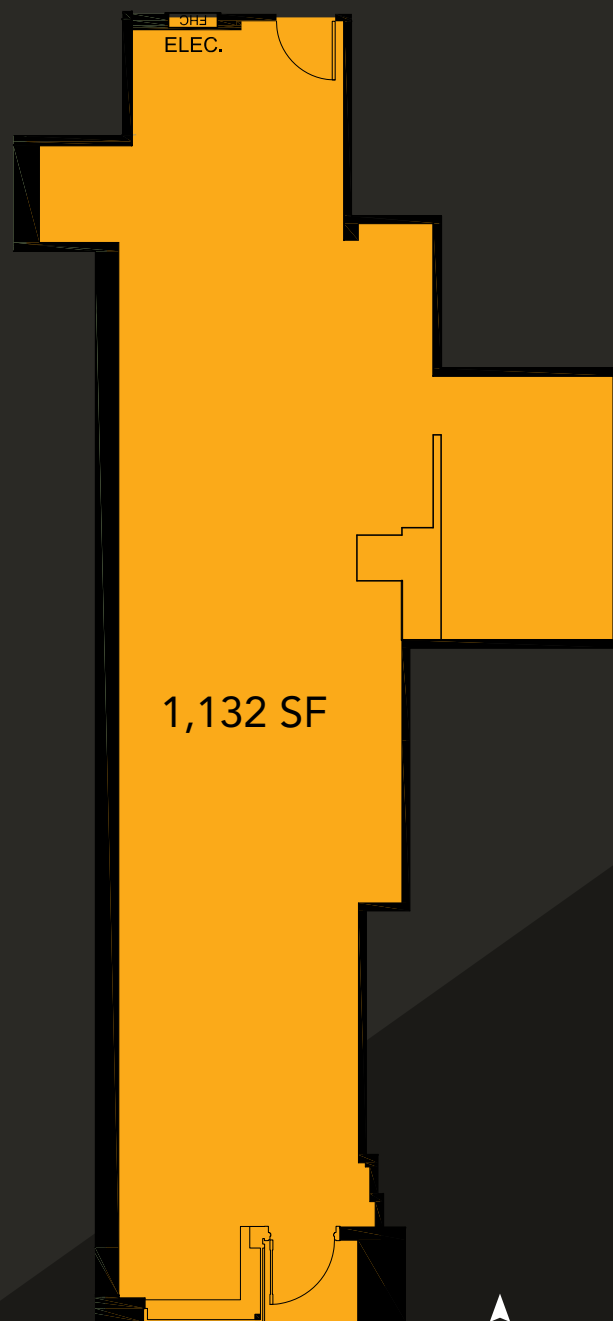
Size: 1,132 sq. ft.

Net Rent: Please contact listing agents

TMI: \$118.00 per sq. ft.

Occupancy: Immediately

- Opportunity to lease a flagship retail space on the preeminent block on Bloor Street West
- Direct neighbouring retailers include Alexander Wang and Saint Laurent, and located within 100m of Cartier, Prada, Louis Vuitton, Hermes and Gucci
- The property features direct subway access, underground parking, and accessibility from both Bloor Street West and Cumberland Street



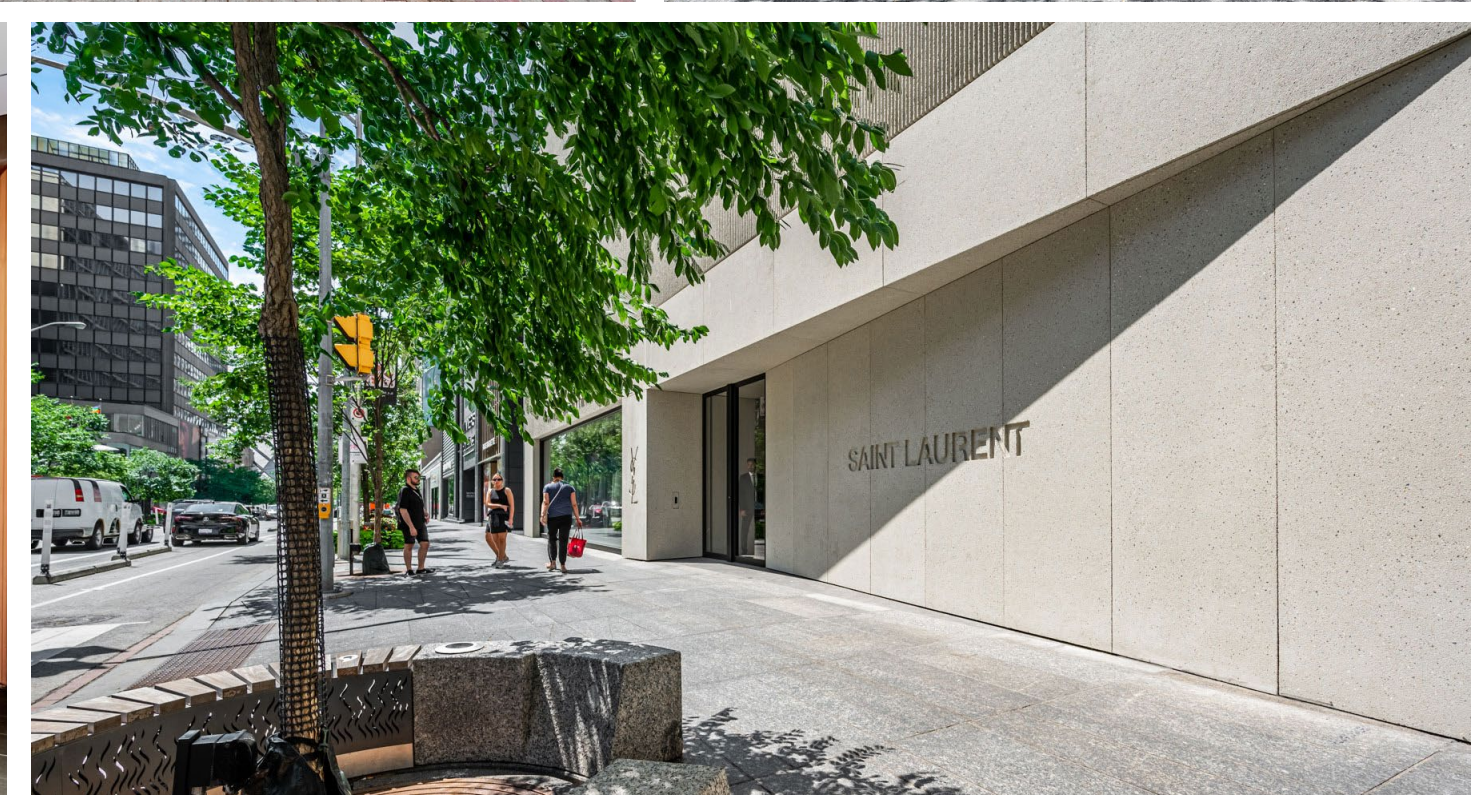
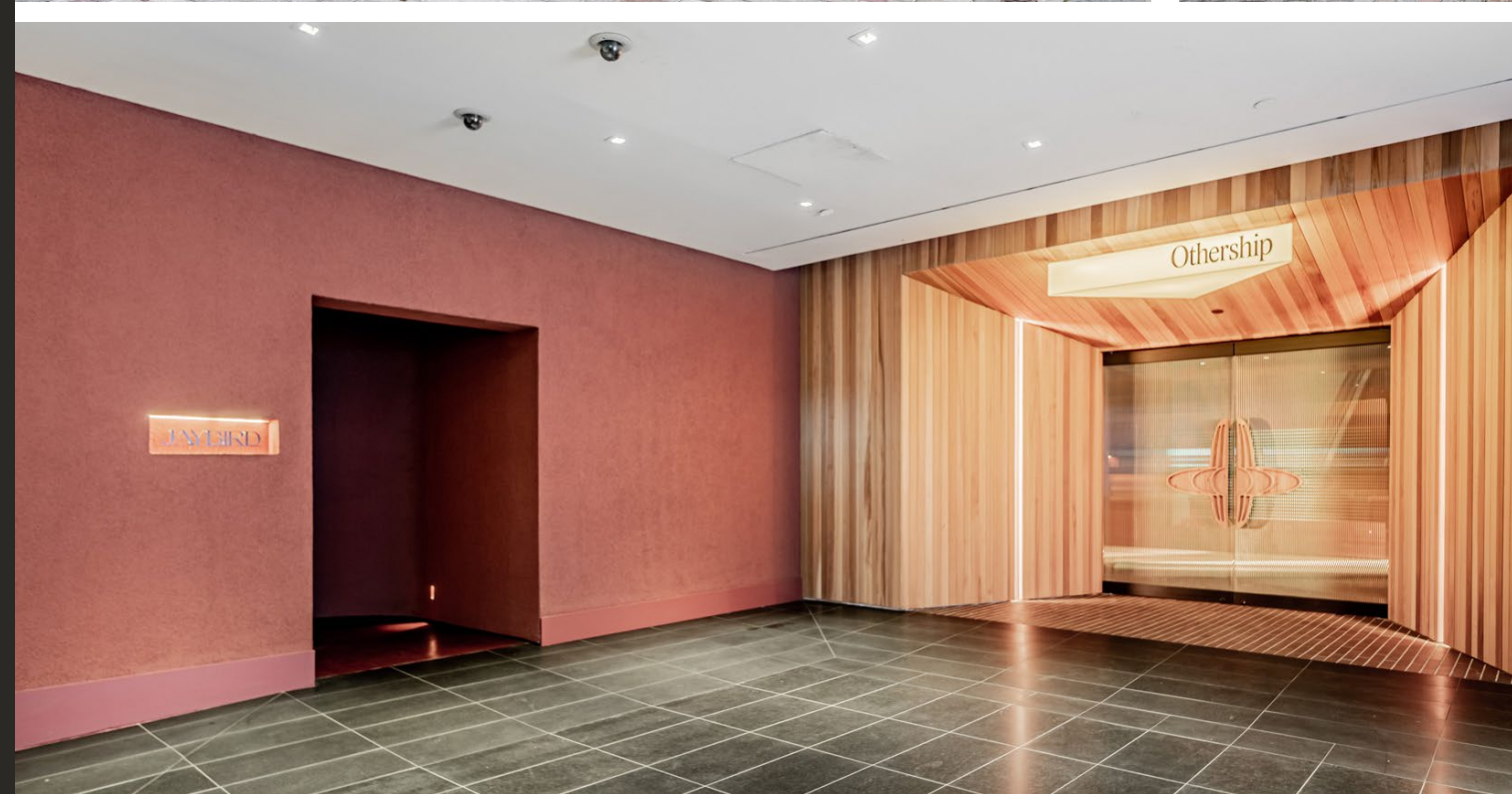
Bloor Street West



# 110 BLOOR

Join Saint Laurent, Alexander Wang,  
Othership, Jaybird, Paris Baguette,  
Mandy's Salads and Starbucks at 110  
Bloor Street West.

The Building has direct subway access  
and provides a connection between  
Bloor West and Cumberland Street.



# BLOOR yorkville R

The Bloor-Yorkville node represents the pinnacle of Canadian high-street retail. The Yorkville and Cumberland area is recognized internationally as one of the top ten shopping destinations in the world, with high-end fashion uses dominating the street front. The area provides residents and tourists with the country's most prestigious selection of luxury and aspirational retailers demonstrating the highest net rental rates in Canada. The area boasts 2.3 million sq. ft. of retail space, 1.5 million of which is street-front. Retail sales performance along the Bloor Street corridor often exceeds \$2,500 per sq. ft.



Neighbouring Retailers



TIFFANY & CO.

GUCCI

alexanderwang



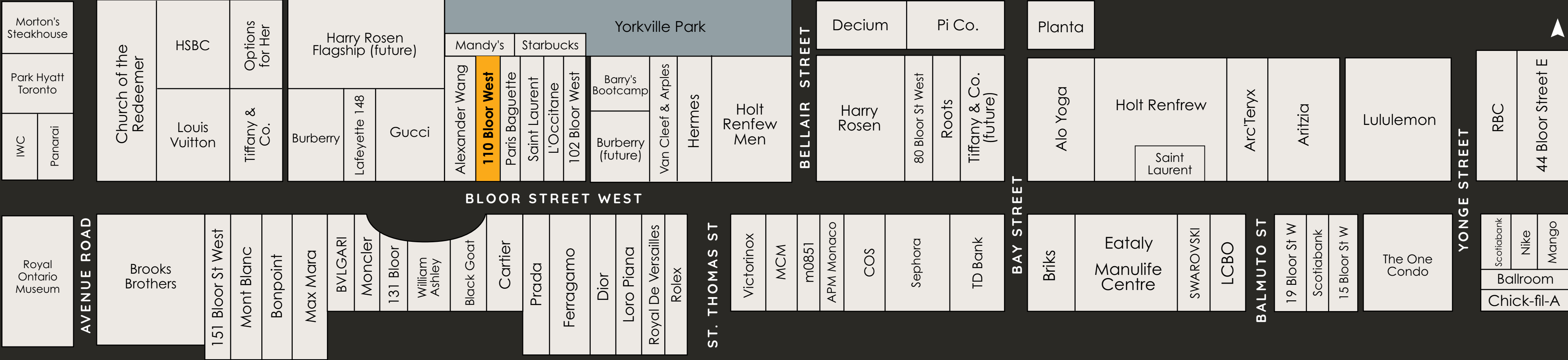
HARRY ROSEN

SAINT LAURENT  
PARIS



ARITZIA

lululemon



FERRAGAMO

Dior



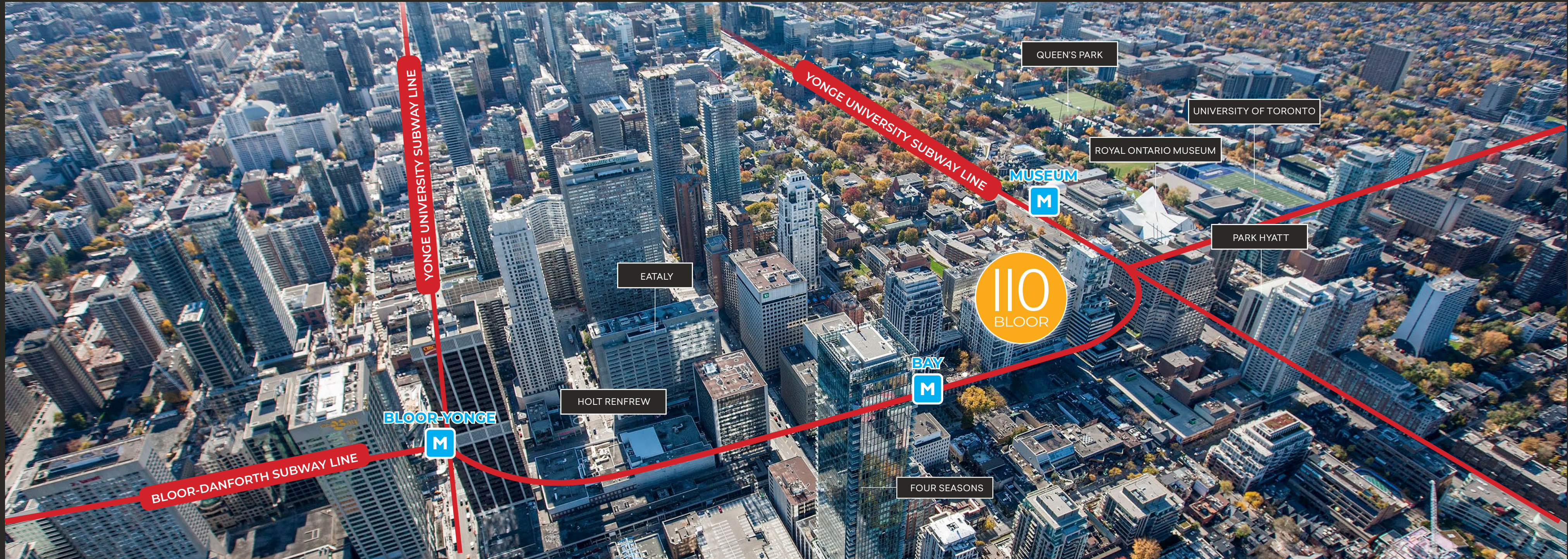
COS

SEPHORA



MANGO





# CONTACT



Cushman & Wakefield ULC, Brokerage  
161 Bay Street, Suite 1500  
Toronto, ON M5J 2S1  
[cushwake.com](http://cushwake.com)



CBRE Real Estate Brokerage  
145 King Street West, Suite 1100  
Toronto, ON, M5H 1J8  
[cbre.ca](http://cbre.ca)

For more information, please contact:

Carmen Siegel\*  
Associate Vice President  
Retail Services  
416 359 2365  
[carmen.siegel@cushwake.com](mailto:carmen.siegel@cushwake.com)

Arlin Markowitz\*  
Executive Vice President  
416.815.2374  
[arlin.markowitz@cbre.com](mailto:arlin.markowitz@cbre.com)

\*Sales Representative

This disclaimer shall apply to CBRE Limited, Real Estate Brokerage, and to all other divisions of the Corporation; to include all employees and independent contractors ("CBRE"). The information set out herein, including, without limitation, any projections, images, opinions, assumptions and estimates obtained from third parties (the "Information") has not been verified by CBRE, and CBRE does not represent, warrant or guarantee the accuracy, correctness and completeness of the Information. CBRE does not accept or assume any responsibility or liability, direct or consequential, for the Information or the recipient's reliance upon the Information. The recipient of the Information should take such steps as the recipient may deem necessary to verify the Information prior to placing any reliance upon the Information. The Information may change and any property described in the Information may be withdrawn from the market at any time without notice or obligation to the recipient from CBRE. CBRE and the CBRE logo are the service marks of CBRE Limited and/or its affiliated or related companies in other countries. All other marks displayed on this document are the property of their respective owners. All Rights Reserved.