

129
John

Building for Lease



Building for Lease in the Heart of Toronto's Entertainment District
129 John Street, Toronto

CBRE urban retail team



Property Details

Address: 129 John Street, Toronto

Size: Ground: 935 sq. ft.
Second: 950 sq. ft.
Third: 930 sq. ft.
Total: 2,815 sq. ft.

Gross Rent: \$10,500 / month + HST

Available: Immediately

- Incredible downtown location in the heart of The Entertainment District at the corner of John Street and Nelson Street
- 1 parking spot available
- Steps to King West, Queen West and The Financial Core
- Close to Osgoode and St. Andrew subway stations as well as an entrance to the PATH network
- Suitable for a variety of retail and office uses
- Neighbouring retailers and traffic drivers include: Scotiabank Theatre, The Ballroom Bowl, Marshalls, Michael's craft store, RendezViews, La Carnita, PAI, Starbucks, TIFF Bell Lightbox, Princess of Wales Theatre

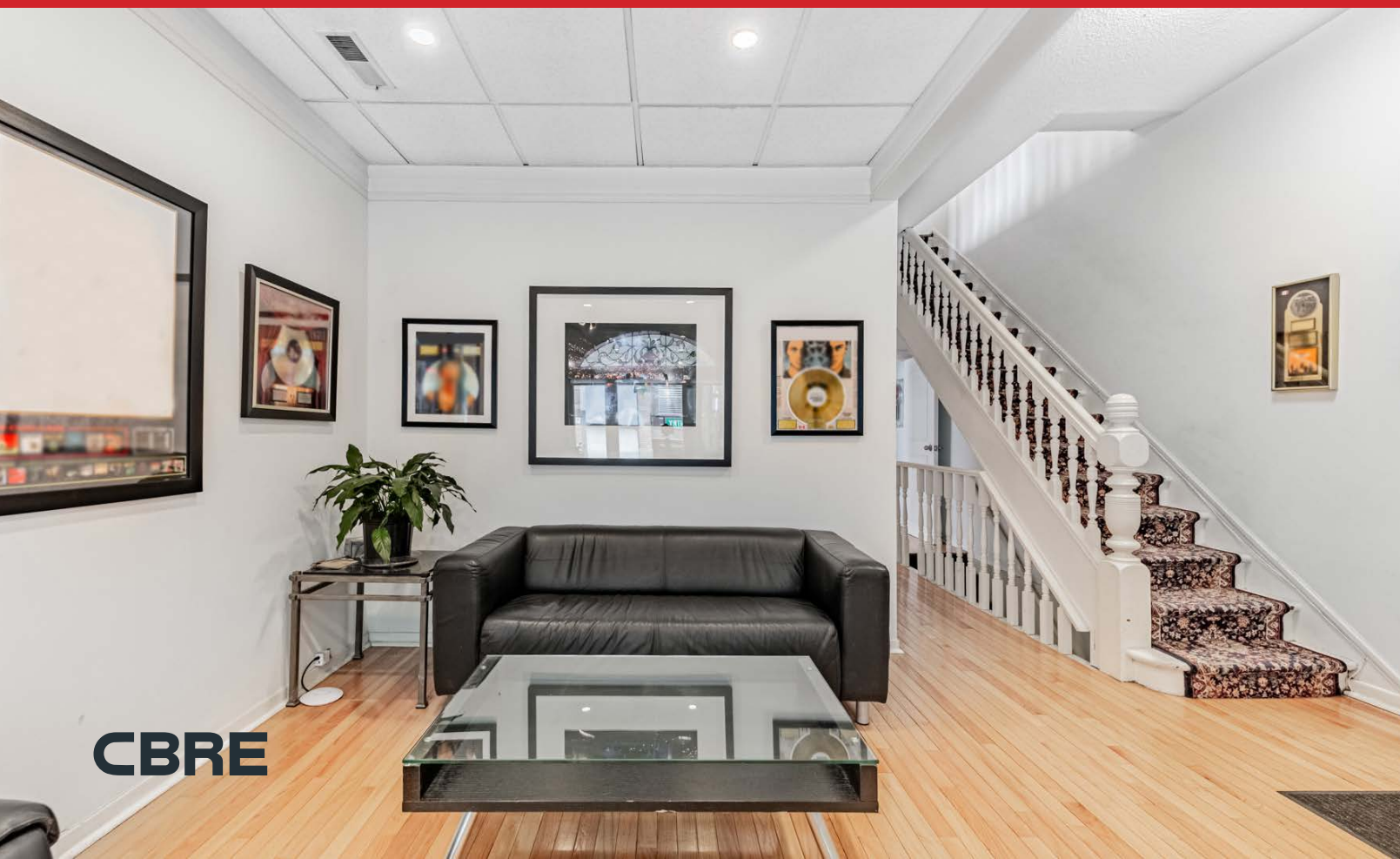




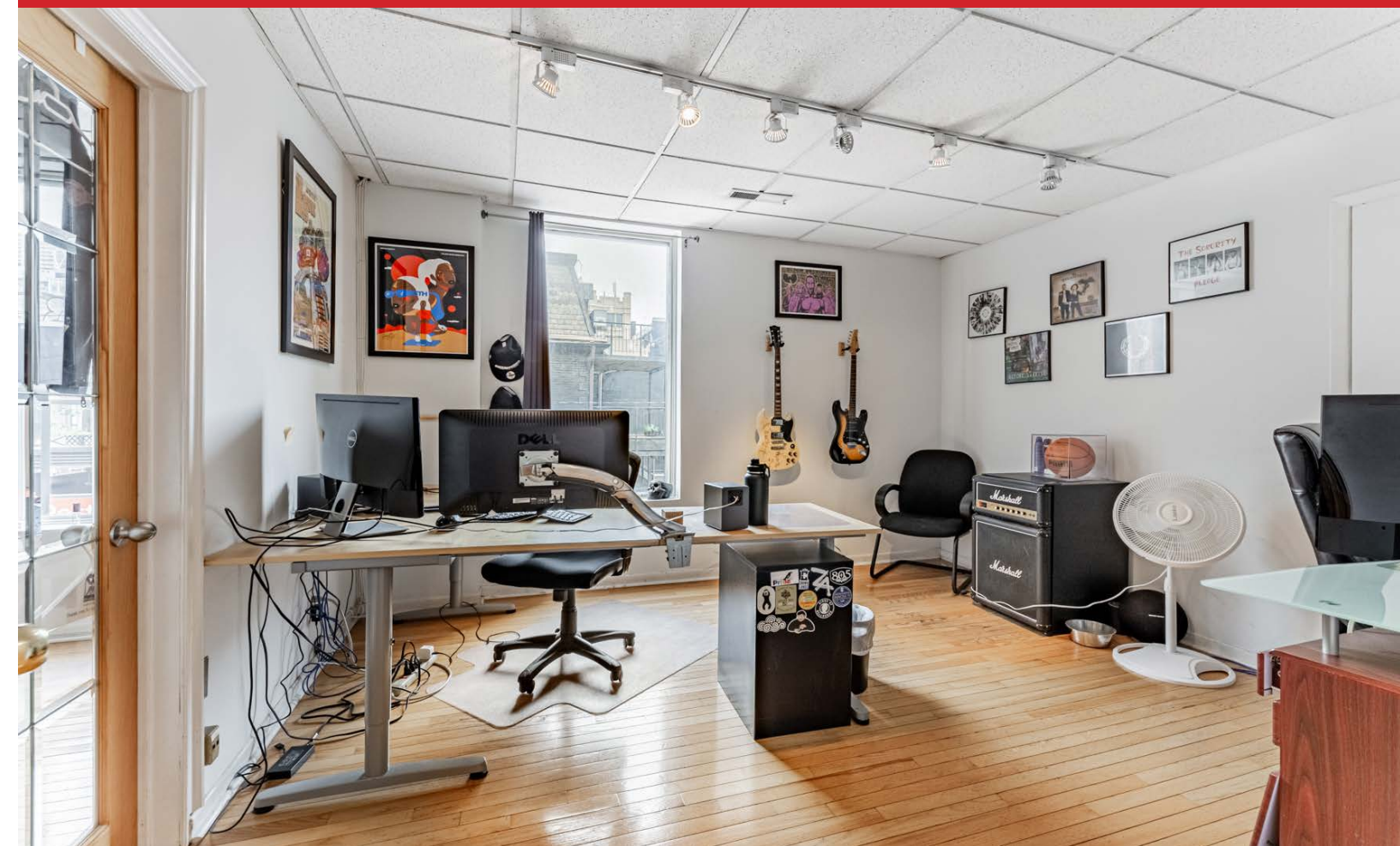
Ground Floor



Second Floor



CBRE





Third Floor



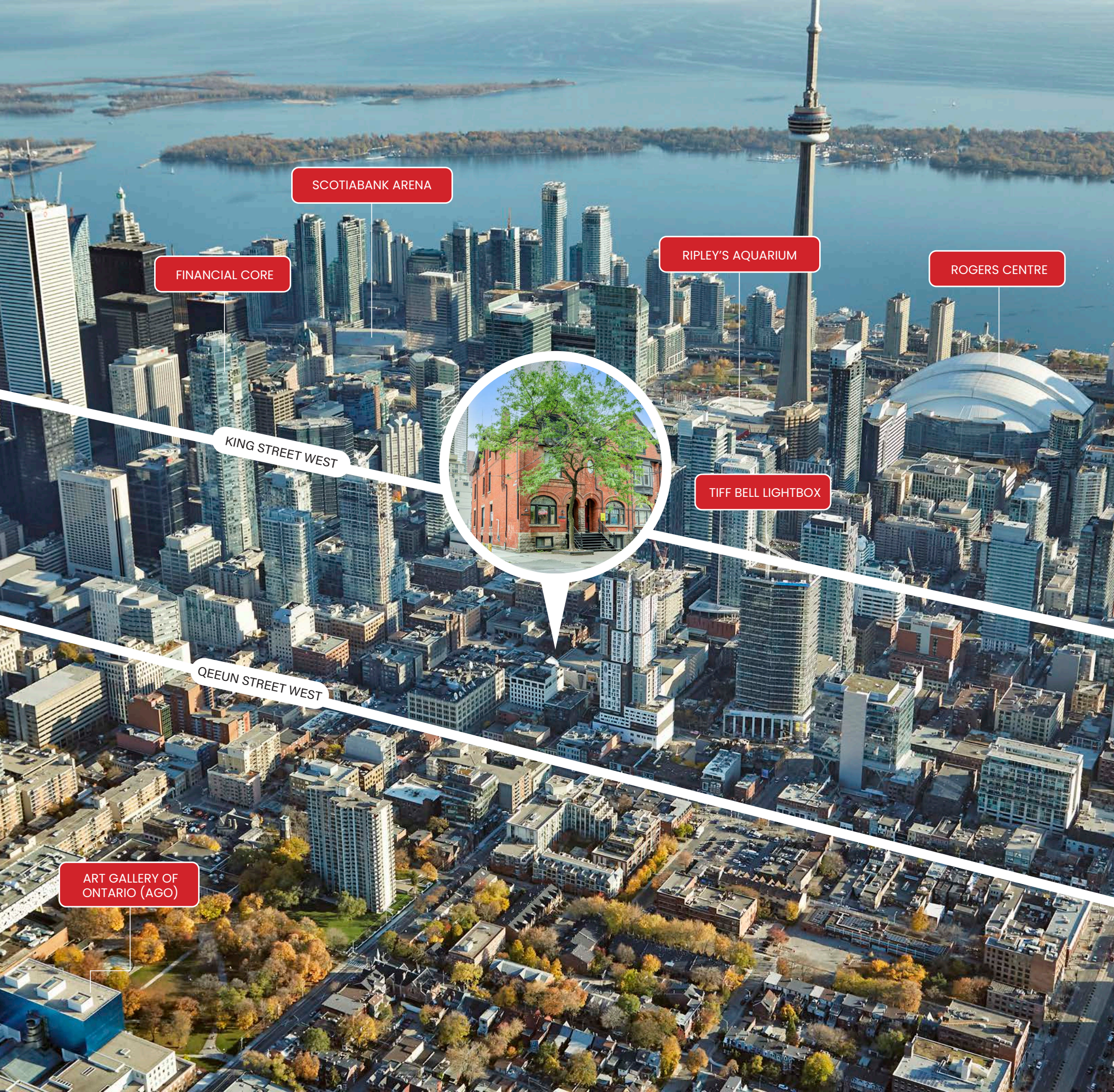
Floor Plans

Ground Floor
935 sq. ft.

Second Floor
950 sq. ft.

Third Floor
930 sq. ft.





129 *John*

Building for Lease

The Location

129 John Street occupies a premier street-front location on John Street in the rapidly growing node of Downtown West in Toronto's urban core. With Queen Street West to the north and King Street West to the south, 129 John is ideally positioned between two of the most dynamic retail nodes in the city.

The property is surrounded by countless amenities including unrivaled transit access, an assortment of retailers, restaurants, cafes, fitness concepts, world-class entertainment and nightlife. Neighbouring traffic generators include Scotiabank Theatre, The Ballroom, Bell Media Headquarters, Princess of Wales Theatre, Roy Thompson Hall, Ripely's Aquarium, CN Tower, AGO and the Rogers Centre.

129 John Street is also within a 10-minute walk to City Hall, Osgoode Hall, The Toronto Courthouse and 10 Armoury Street, the site of the new courthouse which consolidated six Ontario Court of Justice criminal courts, 73 judicial hearing rooms and other court services into one location.

Neighbouring Retailers & Traffic Drivers



Shopping

- 1 Michael's
- 2 Marshalls
- 3 MAC Cosmetics
- 4 Arc'teryx
- 5 Zara
- 6 Brandy Melville
- 7 Aritzia
- 8 Icebreaker
- 9 MEC
- 10 Lululemon
- 11 Reigning Champ
- 12 Club Monaco
- 13 Adidas Originals
- 14 Kit and Ace
- 15 Shoppers Drug Mart
- 16 Fjallraven
- 17 Casper
- 18 Umbra
- 19 Miniso
- 20 Rexall

Food/Drink

- 1 Figo
- 2 La Carnita
- 3 Parlour
- 4 O&B Canteen
- 5 PAI
- 6 Michael's
- 7 Mott 32
- 8 Soho House
- 9 Byblos
- 10 Pigeon Cafe & Bar
- 11 Bar Hop
- 12 Luma
- 13 District Eatery
- 14 Coffee, Oysters, Champagne
- 15 General Assembly Pizza
- 16 FLOCK
- 17 Tutti Matti
- 18 Aloette
- 19 Alo
- 20 Rivoli
- 21 Peter Pan Bisto
- 22 Bar Hop Brewco
- 23 Planta

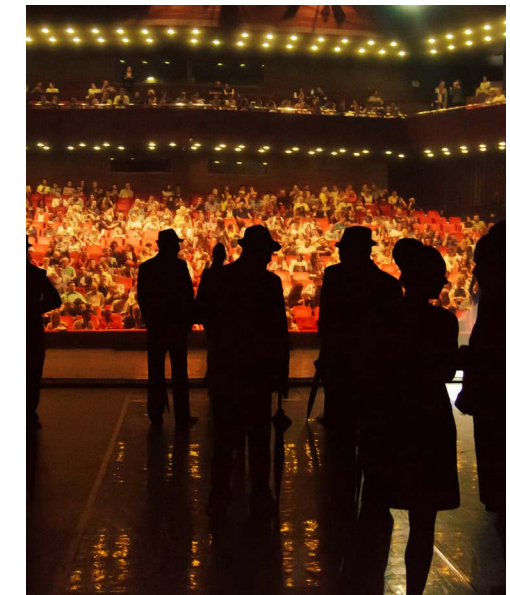
Entertainment

- 1 TIFF Bell Lightbox
- 2 Scotiabank Theatre
- 3 CBC Headquarters
- 4 Princess of Wales Theatre
- 5 Royal Alexandra Theatre
- 6 Roy Thompson Hall
- 7 Bell Media Headquarters
- 8 Four Seasons Centre
- 9 Ballroom Bowl
- 10 Ripley's Aquarium
- 11 CN Tower
- 12 Rogers Centre
- 13 AGO

Hotels

- 1 Shangri-La
- 2 Nobu Hotel (Coming Soon)
- 3 Hilton Garden Inn
- 4 Hyatt Regency
- 5 Le Germain Hotel
- 6 Bisha Hotel
- 7 Soho Hotel
- 8 Residence Inn
- 9 The Ritz Carlton
- 10 Hilton
- 11 The Beverley Hotel

 **129 John Street**





129
John
|
Building for Lease

Contact

ARLIN MARKOWITZ*
Executive Vice President
416 815 2374
arlin.markowitz@cbre.com

ALEX EDMISON*
Senior Vice President
416 874 7266
alex.edmison@cbre.com

JACKSON TURNER**
Senior Vice President
416 815 2394
jackson.turner@cbre.com

TEDDY TAGGART*
Vice President
416 847 3254
teddy.taggart@cbre.com

EMILY EVERETT
Sales Representative
647 943 4185
emily.everett@cbre.com

*Sales Representative **Broker

CBRE urban retail team

This disclaimer shall apply to CBRE Limited, and to all divisions of the Corporation ("CBRE").The information set out herein (the "Information") has not been verified by CBRE, and CBRE does not represent, warrant or guarantee the accuracy, correctness and completeness of the Information. CBRE does not accept or assume any responsibility or liability, direct or consequential, for the Information or the recipient's reliance upon the Information .The recipient of the Information should take such steps as the recipient may deem necessary to verify the Information prior to placing any reliance upon the Information. The Information may change and any property described in the Information may be withdrawn from the market at any time without notice or obligation to the recipient from CBRE.