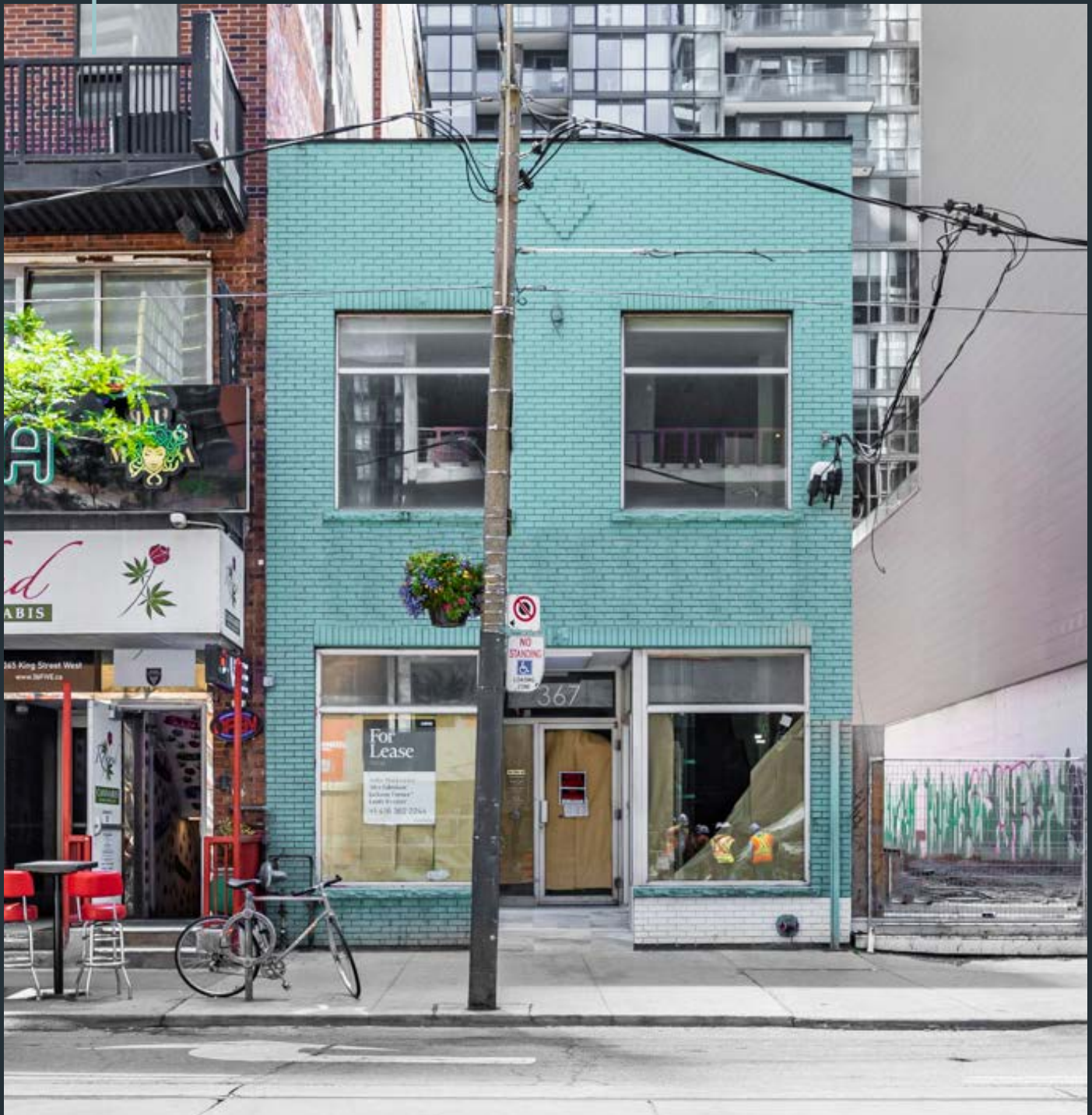


367 KING

PRIME RETAIL FOR LEASE

IN THE HEART OF TORONTO'S ENTERTAINMENT DISTRICT

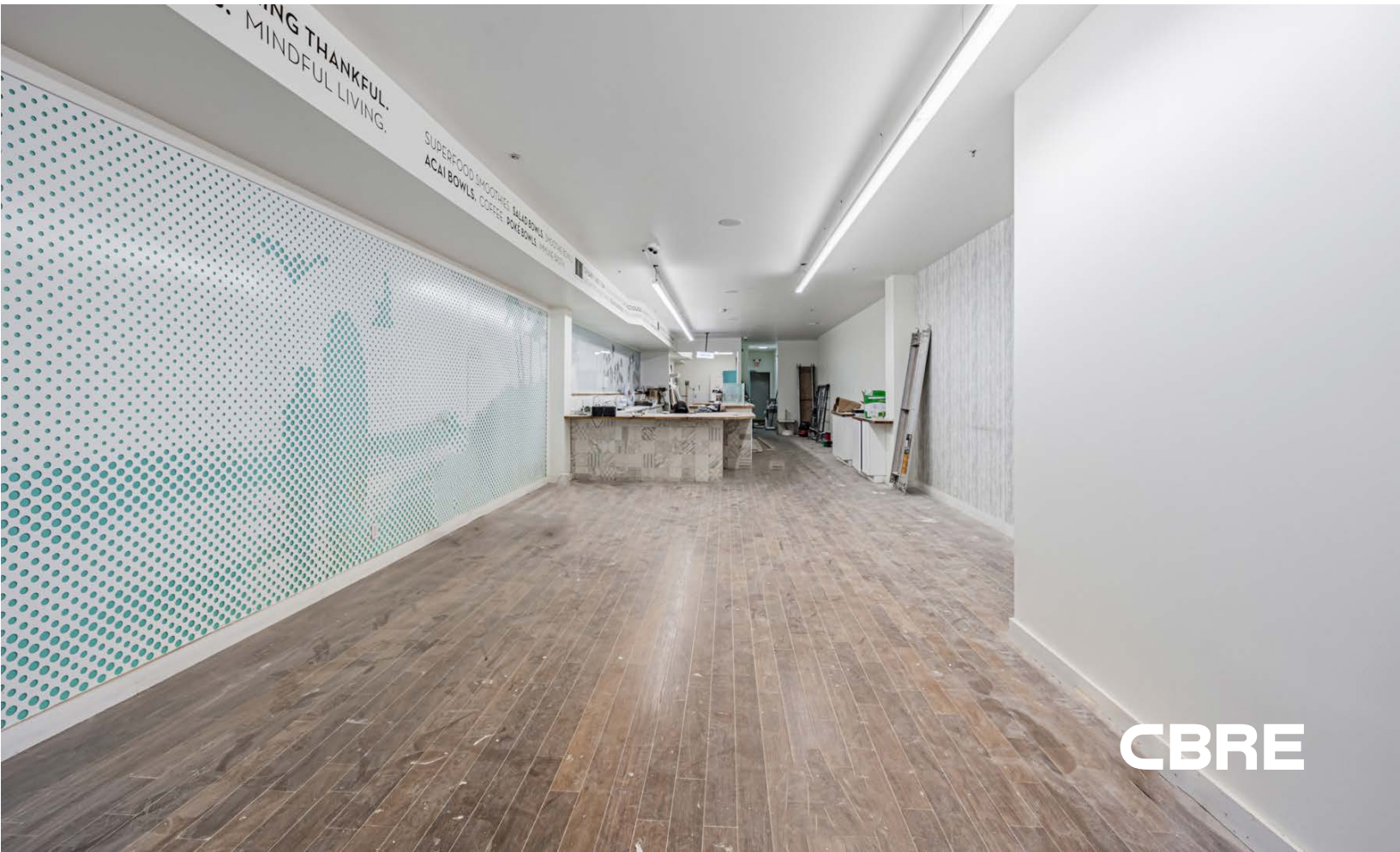
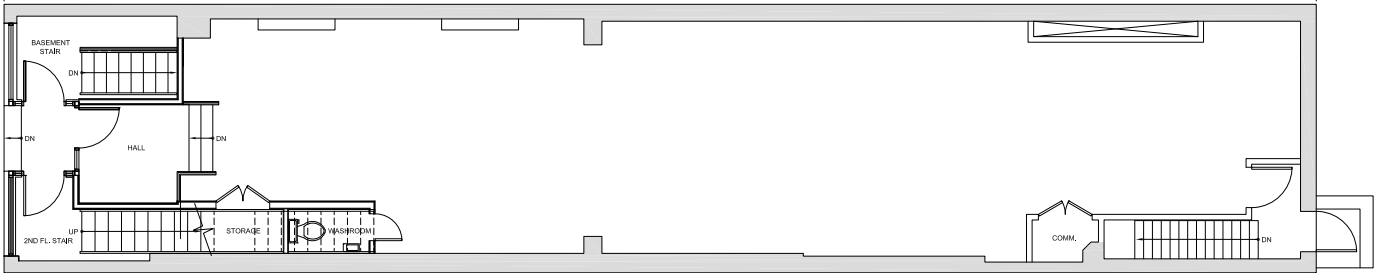


CBRE urban retail team

GROUND FLOOR

Property Details

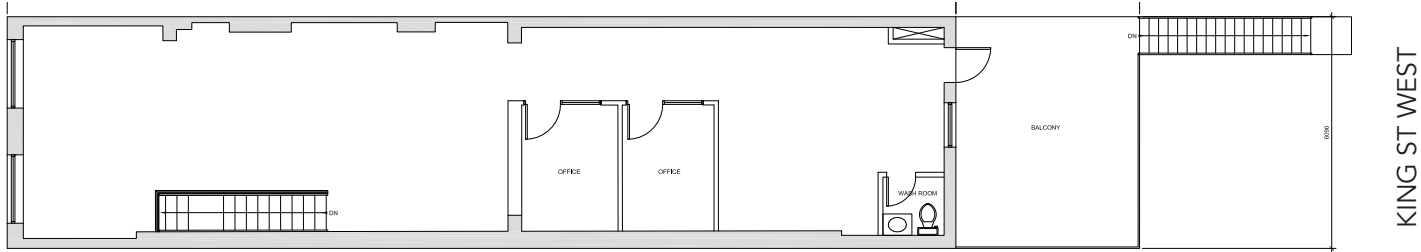
| | |
|------------|-----------------|
| Size: | 1,962 sq. ft. |
| Net Rent: | \$8,000 / month |
| TMI: | \$2,507 / month |
| Available: | Immediately |



SECOND FLOOR

Property Details

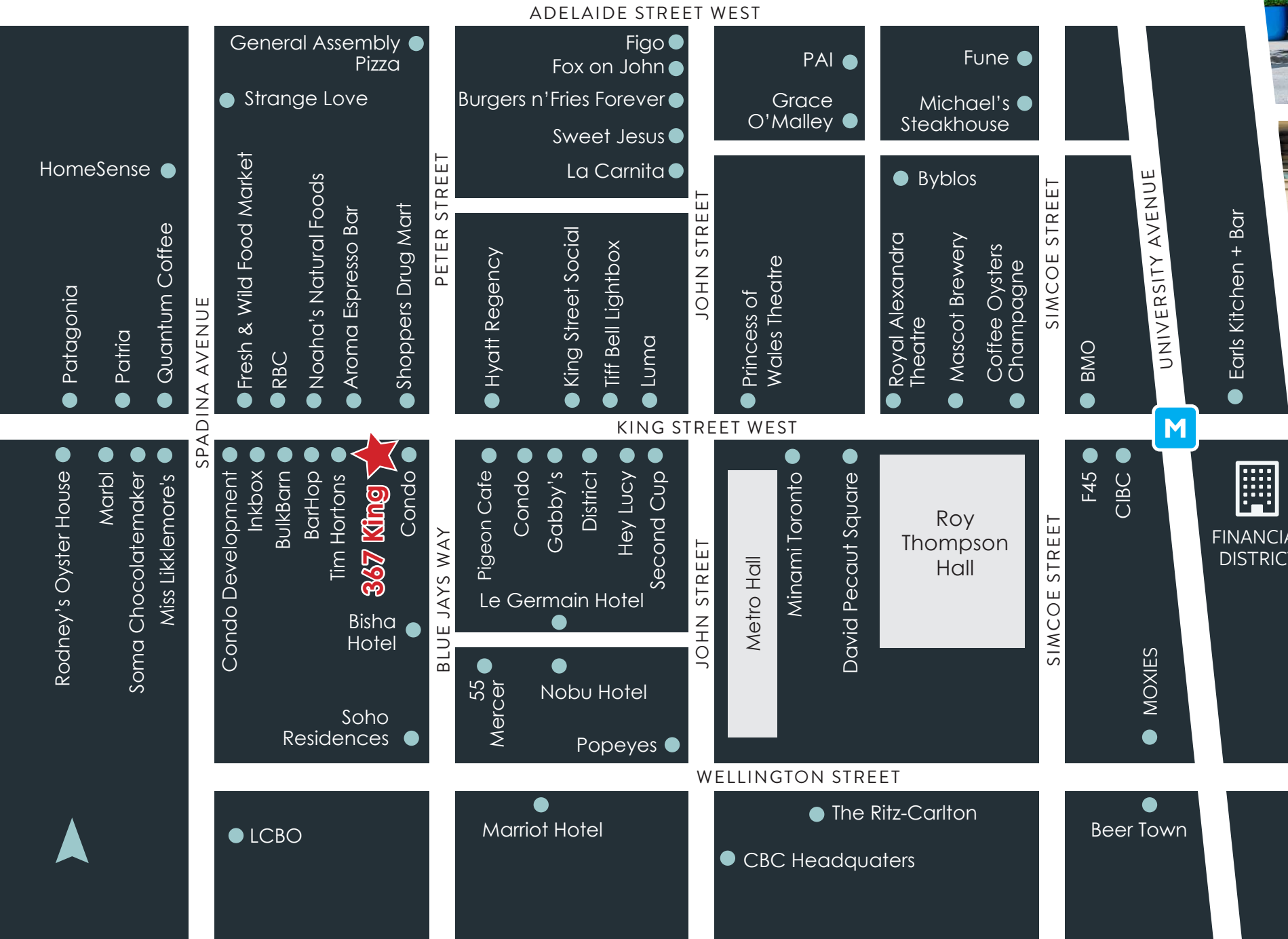
| | |
|------------|-----------------|
| Size: | 1,648 sq. ft. |
| Net Rent: | \$5,000 / month |
| TMI: | \$2,105 / month |
| Available: | Immediately |



THE LOCATION

367 King Street West occupies a premier street-front location on the south side of King Street in the heart of Downtown Toronto's Entertainment District. It is surrounded by countless amenities including unrivaled access to transit, an assortment of retailers, the city's most popular restaurants and bars, world-class entertainment and nightlife and steps away from the Financial District.

The Property is within walking distance to many of Toronto's top attractions, hotels and points-of-interest including Tiff Bell Lightbox, Bisha Hotel, the future Nobu Hotel & Residences, Princess of Wales Theatre, Rogers Centre, Royal Alexandra Theatre, CN Tower and Ripley's Aquarium.



ADIVSORY TEAM

ARLIN MARKOWITZ*
Executive Vice President
416 815 2374
arlin.markowitz@cbre.com

ALEX EDMISON*
Senior Vice President
416 874 7266
alex.edmison@cbre.com

JACKSON TURNER**
Senior Vice President
416 815 2394
jackson.turner@cbre.com

TEDDY TAGGART*
Vice President
416 847 3254
teddy.taggart@cbre.com

EMILY EVERETT
Sales Representative
647 943 4185
emily.everett@cbre.com

*Sales Representative **Broker

CBRE urban retail team

This disclaimer shall apply to CBRE Limited, Real Estate Brokerage, and to all other divisions of the Corporation; to include all employees and independent contractors ("CBRE"). The information set out herein, including, without limitation, any projections, images, opinions, assumptions and estimates obtained from third parties (the "Information") has not been verified by CBRE, and CBRE does not represent, warrant or guarantee the accuracy, correctness and completeness of the Information. CBRE does not accept or assume any responsibility or liability, direct or consequential, for the Information or the recipient's reliance upon the Information. The recipient of the Information should take such steps as the recipient may deem necessary to verify the Information prior to placing any reliance upon the Information. The Information may change and any property described in the Information may be withdrawn from the market at any time without notice or obligation to the recipient from CBRE. CBRE and the CBRE logo are the service marks of CBRE Limited and/or its affiliated or related companies in other countries. All other marks displayed on this document are the property of their respective owners. All Rights Reserved.