



**732** QUEEN  
STREET  
EAST

**PRIME RETAIL FOR LEASE**  
IN THE HEART OF TORONTO'S RIVERSIDE DISTRICT

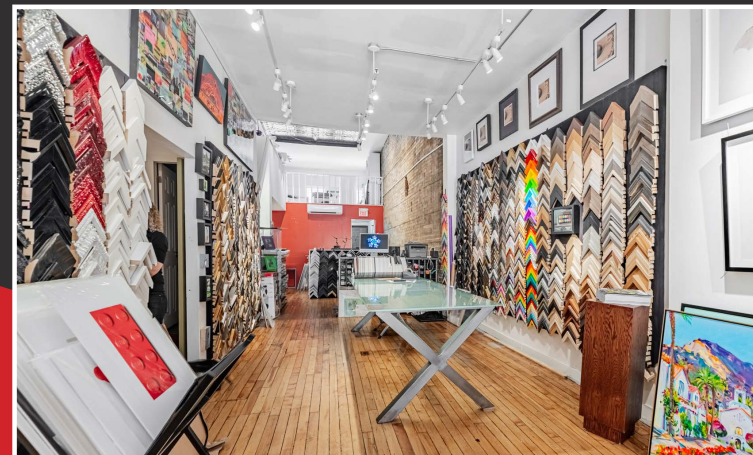
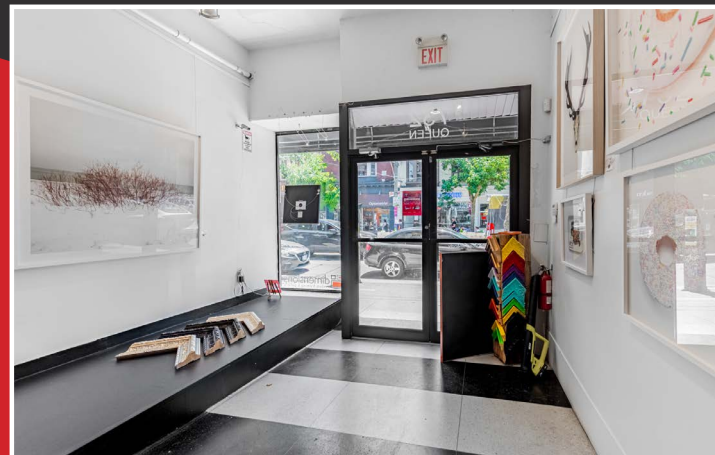
**CBRE**



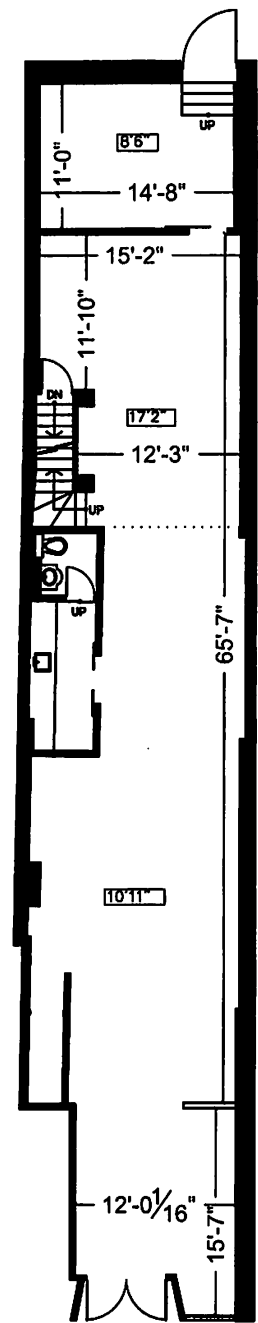
# 732 QUEEN STREET EAST

**Size** 1,582 sq. ft.  
**Net Rent** \$40.00 per sq. ft.  
**TMI** \$16.00 per sq. ft.  
**Available** Immediately

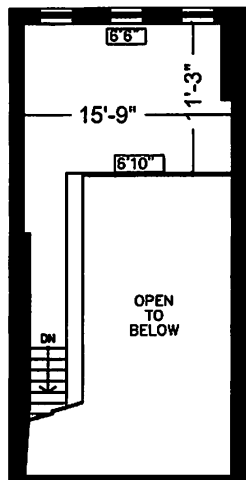
- Prime retail in the heart of Toronto's popular Riverside District
- Includes 812 sq. ft. basement
- Five minute walk to the future Riverside-Leslieville subway station
- Seconds from the DVP
- Neighbouring retailers: The Broadview Hotel, Dukes Refresher Bar, COPS Donuts, Butchers of Distinction, The Opera House, La Carnita and many more



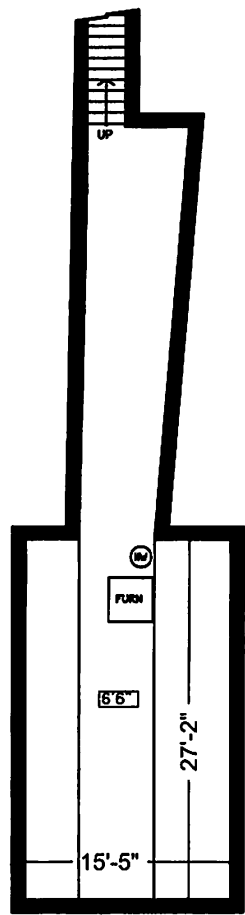




GROUND



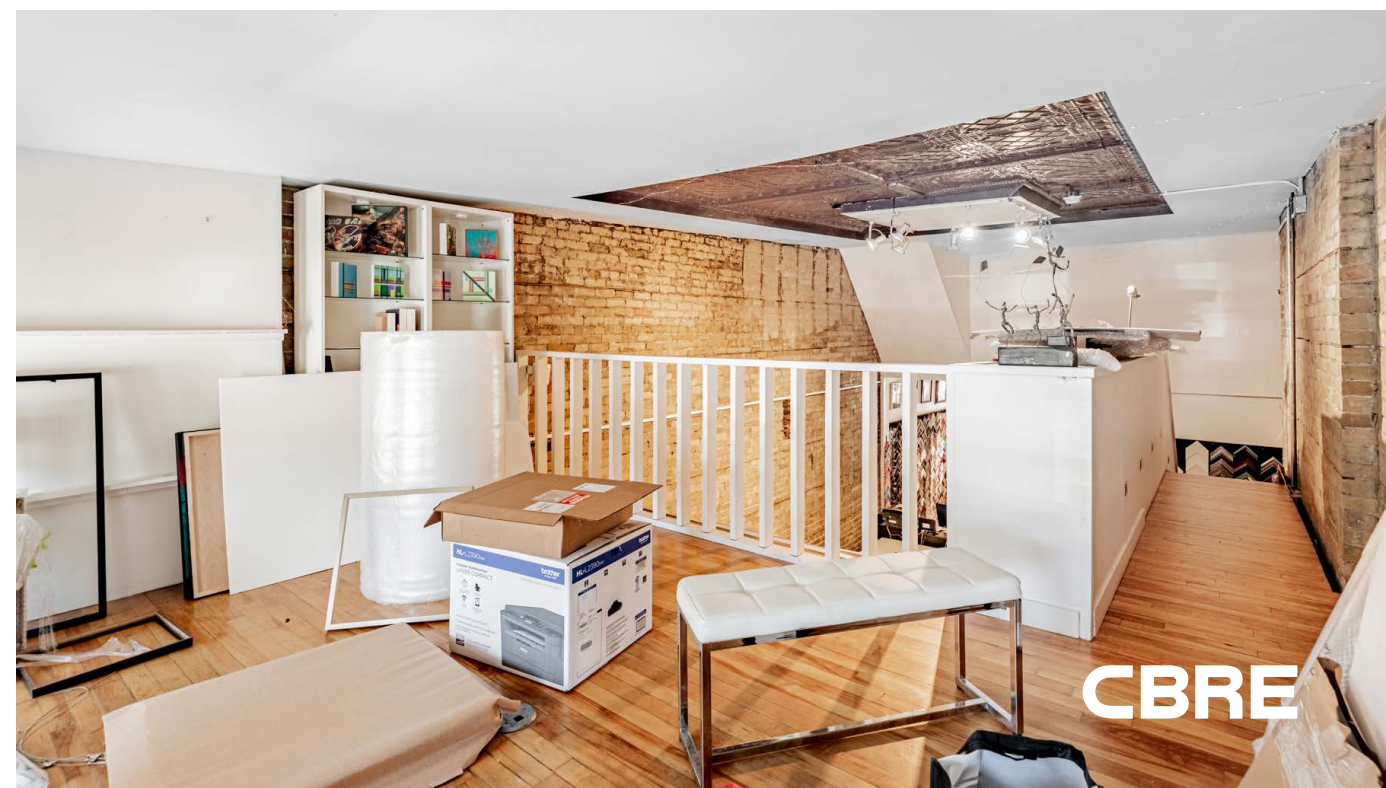
MEZZANINE



BASEMENT





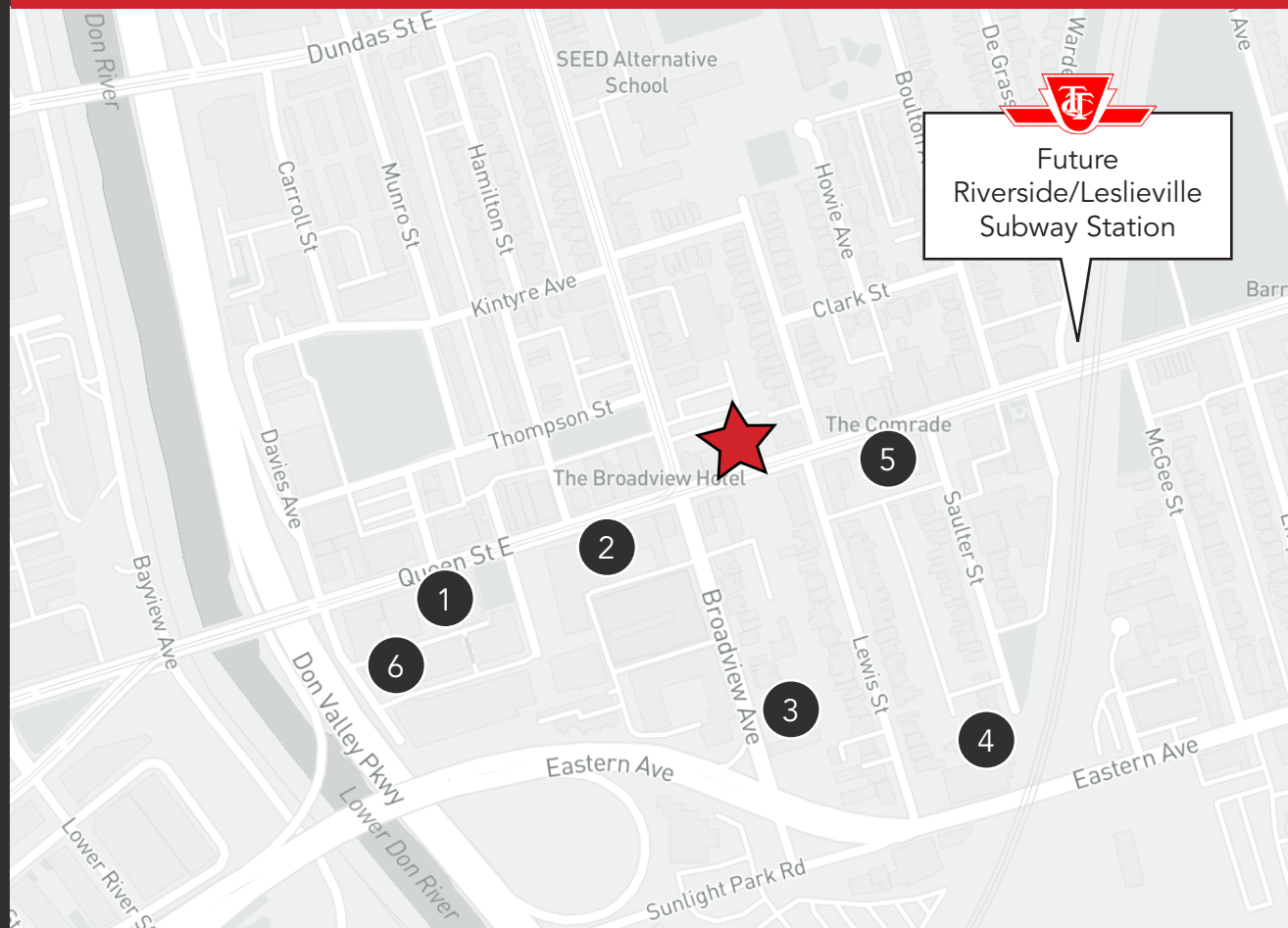




# THE LOCATION | RIVERSIDE DISTRICT

Riverside District is a popular east-end neighbourhood spanning 10 blocks of Queen Street East from the Don Valley Parkway to De Grassi Street. The area is rich in history and boasts over 100 restaurants, bars, shops and attractions. Popular neighbourhood spots include The Broadview Hotel, The Opera House, Eastbound Brewing Company, Juicebox Vintage and many more!

## NEIGHBOURING DEVELOPMENT ACTIVITY



- 1** 641 Queen St East  
Pre-Construction  
# of Units: 94
- 2** 685 Queen St East  
Under Construction  
# of Units: 26
- 3** 21 Broadview  
Pre-Construction  
# of Units: 340
- 4** 356 Eastern Avenue  
Pre-Construction  
# of Units: 140
- 5** Biblio Lofts  
Under Construction  
# of Units: 28
- 6** Riverside Square  
Under Construction  
# of Units: 913

**1,541 New Units**



## CONTACT

---

ARLIN MARKOWITZ\*  
Executive Vice President  
416 815 2374  
arlin.markowitz@cbre.com

ALEX EDMISON\*  
Senior Vice President  
416 874 7266  
alex.edmison@cbre.com

JACKSON TURNER\*\*  
Senior Vice President  
416 815 2394  
jackson.turner@cbre.com

TEDDY TAGGART\*  
Vice President  
416 847 3254  
teddy.taggart@cbre.com

EMILY EVERETT  
Sales Representative  
647 943 4185  
emily.everett@cbre.com

**CBRE** urban retail team

This disclaimer shall apply to CBRE Limited, Real Estate Brokerage, and to all other divisions of the Corporation; to include all employees and independent contractors ("CBRE"). The information set out herein, including, without limitation, any projections, images, opinions, assumptions and estimates obtained from third parties (the "Information") has not been verified by CBRE, and CBRE does not represent, warrant or guarantee the accuracy, correctness and completeness of the Information. CBRE does not accept or assume any responsibility or liability, direct or consequential, for the Information or the recipient's reliance upon the Information. The recipient of the Information should take such steps as the recipient may deem necessary to verify the Information prior to placing any reliance upon the Information. The Information may change and any property described in the Information may be withdrawn from the market at any time without notice or obligation to the recipient from CBRE. CBRE and the CBRE logo are the service marks of CBRE Limited and/or its affiliated or related companies in other countries. All other marks displayed on this document are the property of their respective owners. All Rights Reserved.