

1388 YONGE

PRIME RETAIL FOR LEASE AT YONGE & ST. CLAIR



CBRE

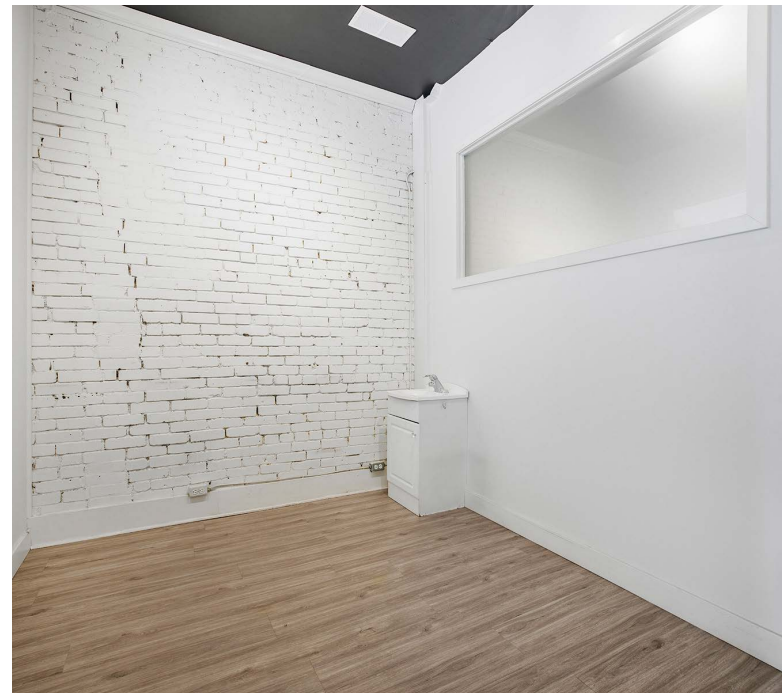
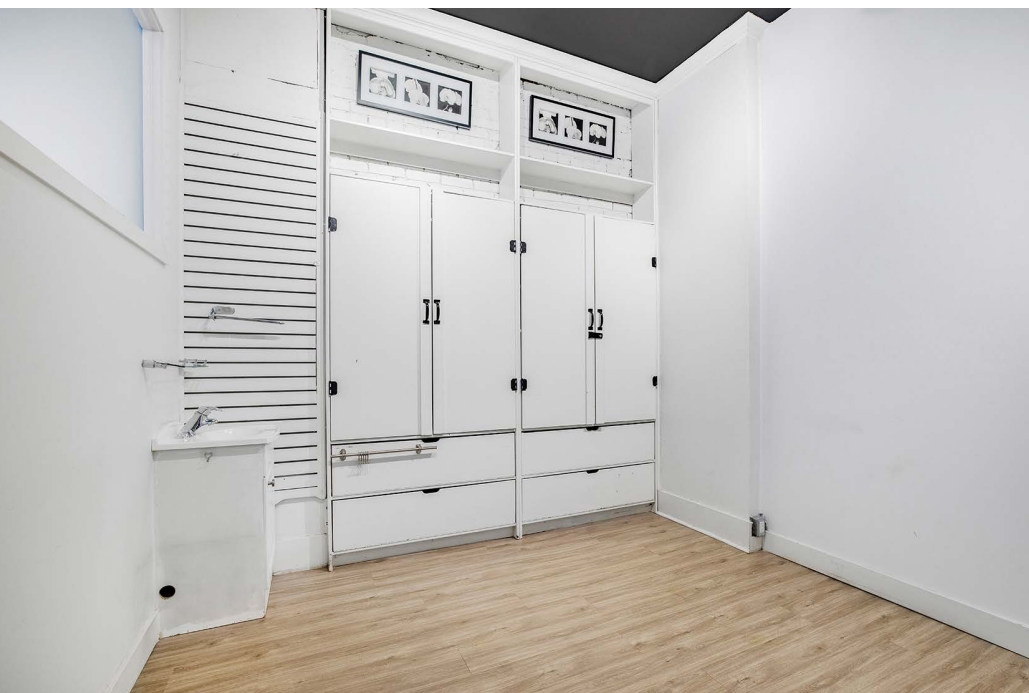
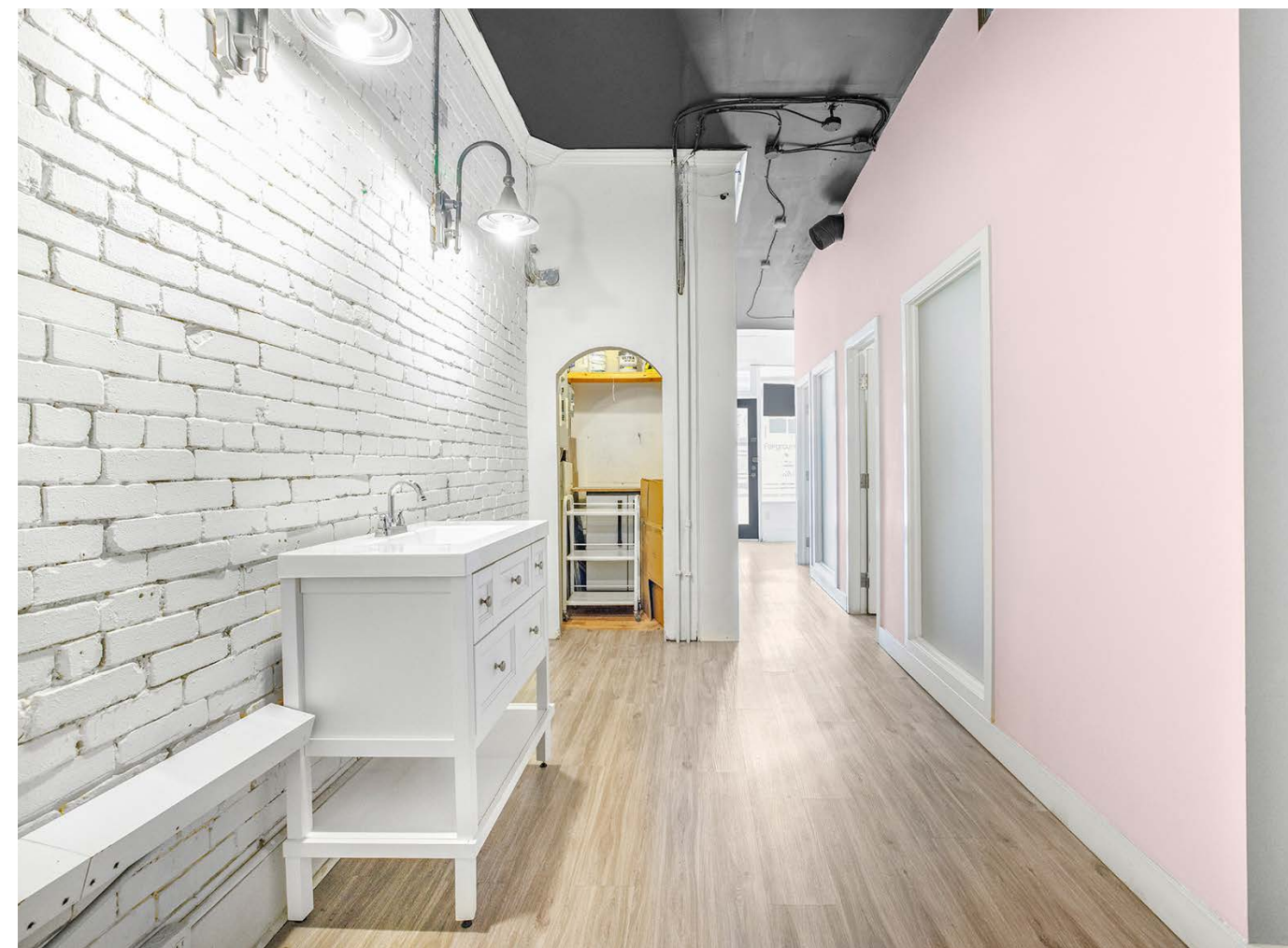
1388 Yonge Street

Property Details

Size: 800 sq. ft.
Net Rent: \$4,200 / month
TMI: \$1,900 / month
Available: Immediately

- Located just south of the intersection of Yonge & St. Clair
- Steps to St. Clair subway station
- Area retailers include: Holy Chuck Burger, The Ten Spot, Mary Be Kitchen, Loblaws, TD, Pilot Coffee Roasters, Scotiabank, Cucina Buca, CIBC



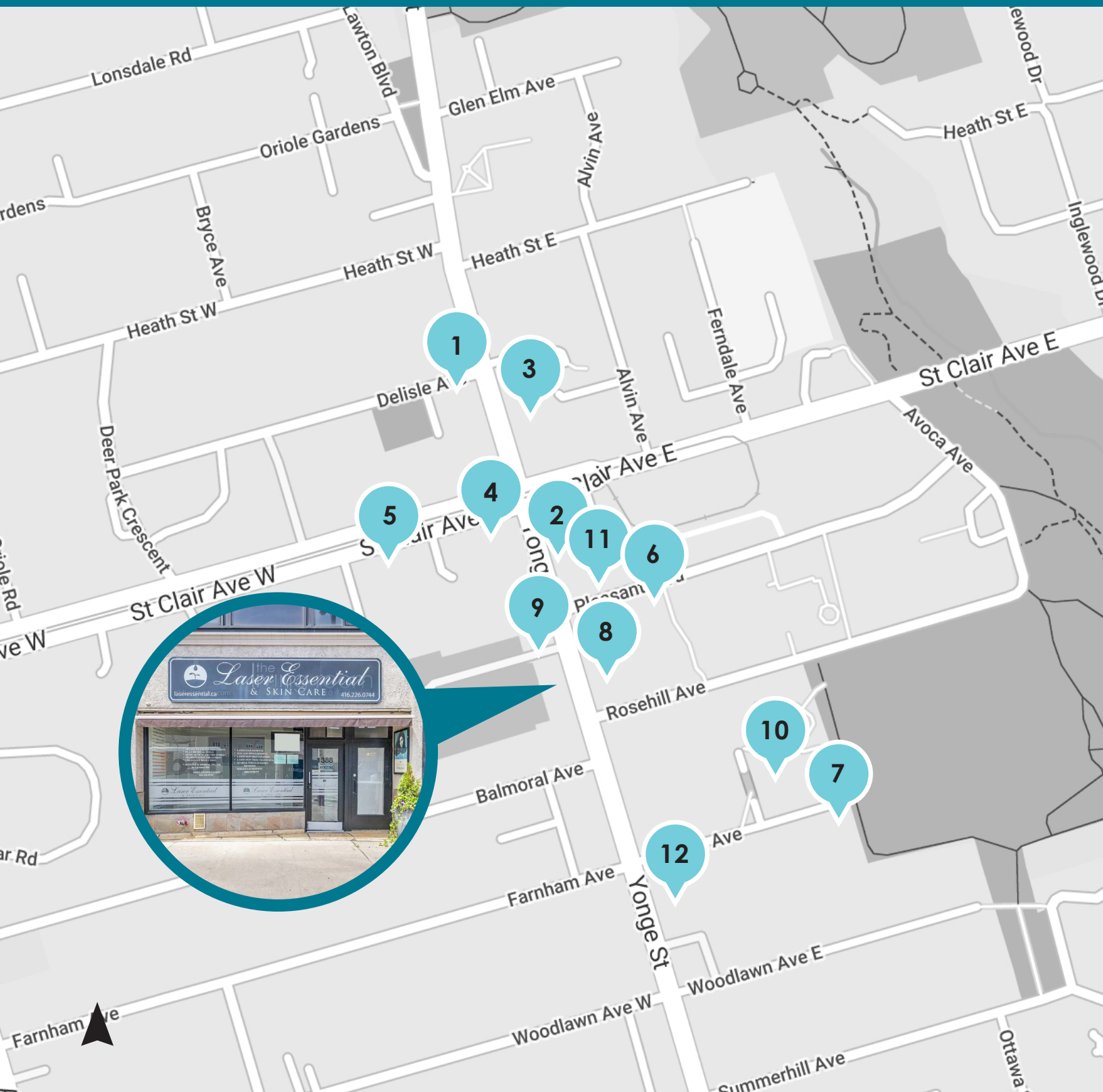


Neighbouring Retailers



Notable Area Developments

Neighbourhood Growth



- | | | | |
|---|--|--|---|
| <p>1. One Delisle</p>  <p>1 Delisle Avenue
Construction
371 units
44 storeys</p> | <p>2. The Clair</p>  <p>1421 Yonge Street
Pre-Construction
198 units
34 storeys</p> | <p>3. St. Clair Place</p>  <p>1485 Yonge Street
Pre-Construction
1,361 units
44,39,27,13 storeys</p> | <p>4. 1 St. Clair W</p>  <p>1 St. Clair West
Pre-Construction
340 units
49 storeys</p> |
| <p>5. 45 St. Clair W</p>  <p>45 St. Clair Ave W
Pre-Construction
629 units
50 storeys</p> | <p>6. The Notable</p>  <p>29 Pleasant Blvd.
Pre-Construction
409 units
50 storeys</p> | <p>7. 49 Jackes</p>  <p>49 Jackes Avenue
Pre-Construction
217 units
29 storeys</p> | <p>8. Yonge & Rosehill</p>  <p>1365 Yonge Street
Construction
239 units
17 storeys</p> |
| <p>9. The Hill Condos</p>  <p>1406 Yonge Street
Pre-Construction
542 units
50 storeys</p> | <p>10. Rosehill Tower</p>  <p>44 Jackes Ave
Construction
263 units
31 storeys</p> | <p>11. 11 Pleasant</p>  <p>11 Pleasant Blvd.
Pre-Construction
72 units
14 storeys</p> | <p>12. 1303 Yonge</p>  <p>1303 Yonge Street
Pre-Construction
102 units
10 storeys</p> |



Advisors

Arlin Markowitz*
Executive Vice President
416 815 2374
arlin.markowitz@cbre.com

Alex Edmison*
Senior Vice President
416 874 7266
alex.edmison@cbre.com

Jackson Turner**
Senior Vice President
416 815 2394
jackson.turner@cbre.com

Teddy Taggart*
Vice President
416 847 3254
teddy.taggart@cbre.com

Emily Everett
Sales Representative
416 943 4185
emily.everett@cbre.com

*Sales Representative **Broker

CBRE

This disclaimer shall apply to CBRE Limited, Real Estate Brokerage, and to all other divisions of the Corporation; to include all employees and independent contractors ("CBRE"). The information set out herein, including, without limitation, any projections, images, opinions, assumptions and estimates obtained from third parties (the "Information") has not been verified by CBRE, and CBRE does not represent, warrant or guarantee the accuracy, correctness and completeness of the Information. CBRE does not accept or assume any responsibility or liability, direct or consequential, for the Information or the recipient's reliance upon the Information. The recipient of the Information should take such steps as the recipient may deem necessary to verify the Information prior to placing any reliance upon the Information. The Information may change and any property described in the Information may be withdrawn from the market at any time without notice or obligation to the recipient from CBRE. CBRE and the CBRE logo are the service marks of CBRE Limited and/or its affiliated or related companies in other countries. All other marks displayed on this document are the property of their respective owners. All Rights Reserved.