

170-172
King
East

Prime Retail Space for Lease in the King East Design District



Located At the Corner of King Street East & George Street

CBRE urban retail team

170 King Entrance



170-172 King East

Property Details:

Address: 170-172 King Street East, Toronto

Size:	170 King Street East:	2,260 sq. ft.	} <i>May be leased separately or together</i>
	172 King Street East:	2,700 sq. ft.	
	Combined Units:	4,960 sq. ft.	

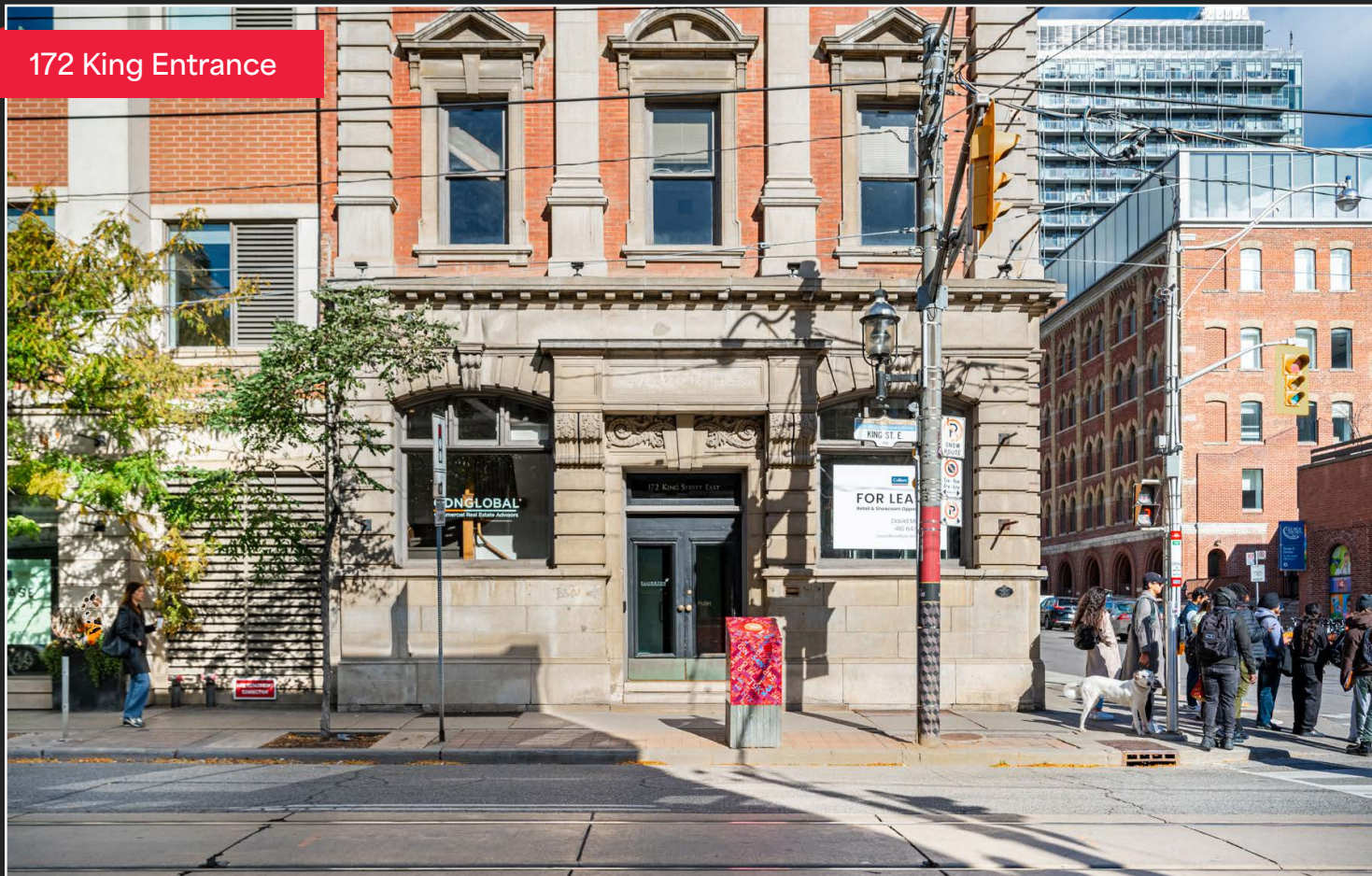
Net Rent: Please contact listing agents

TMI: \$21.78 per sq. ft. (2024 est.)

Available: Immediately

- Excellent corner location in the heart of the King East Design District
- Bright and open space with high ceilings and ample natural light throughout
- Vibrant, high-traffic area
- The building features underground parking
- Neighbouring retailers and traffic drivers include: George Brown College, DaTile, Keilhauer Showroom, EQ3, Petit Dejuener, St. James Park, Neo Coffee Bar, Ardo Restaurant and many more

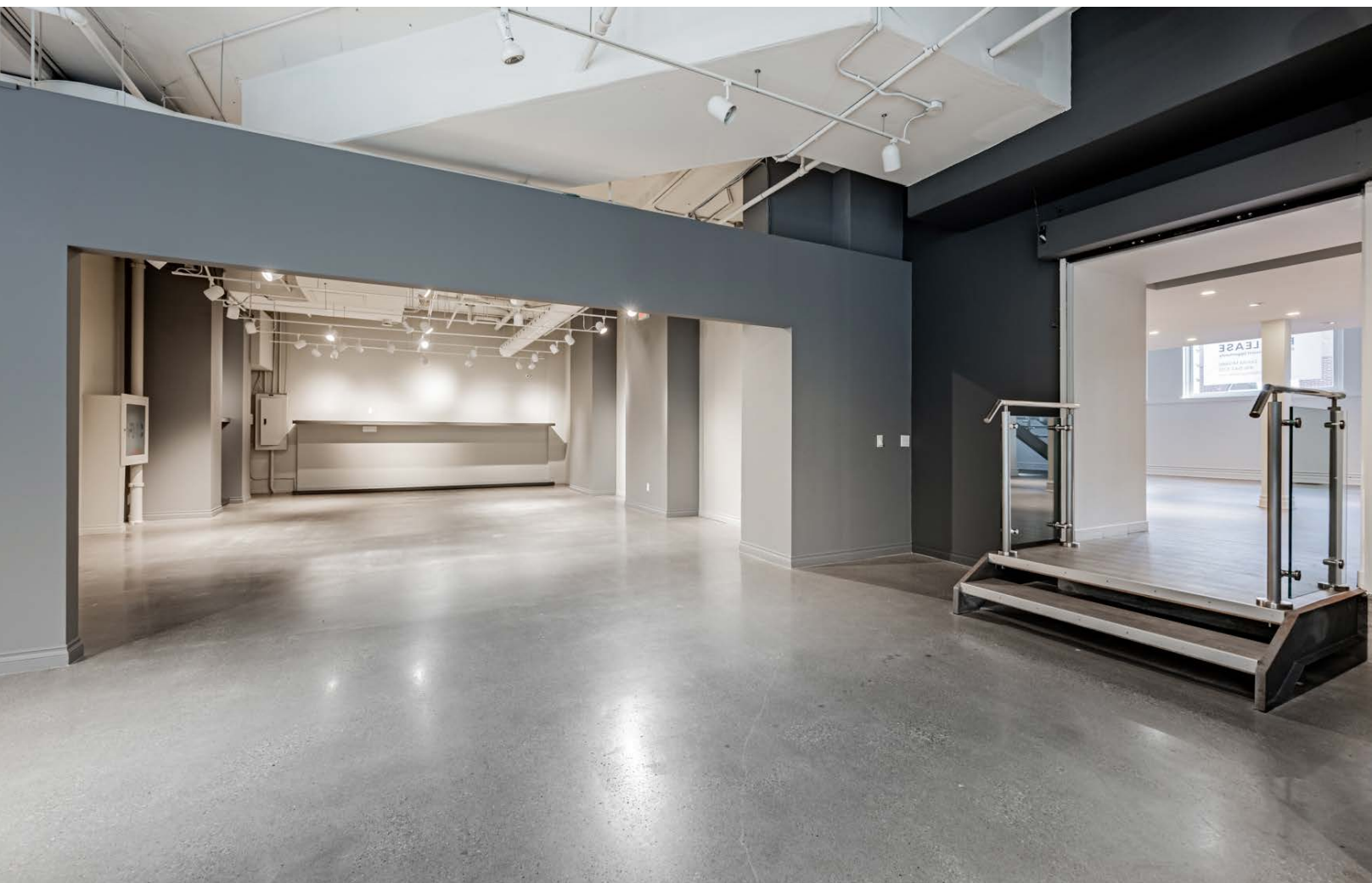
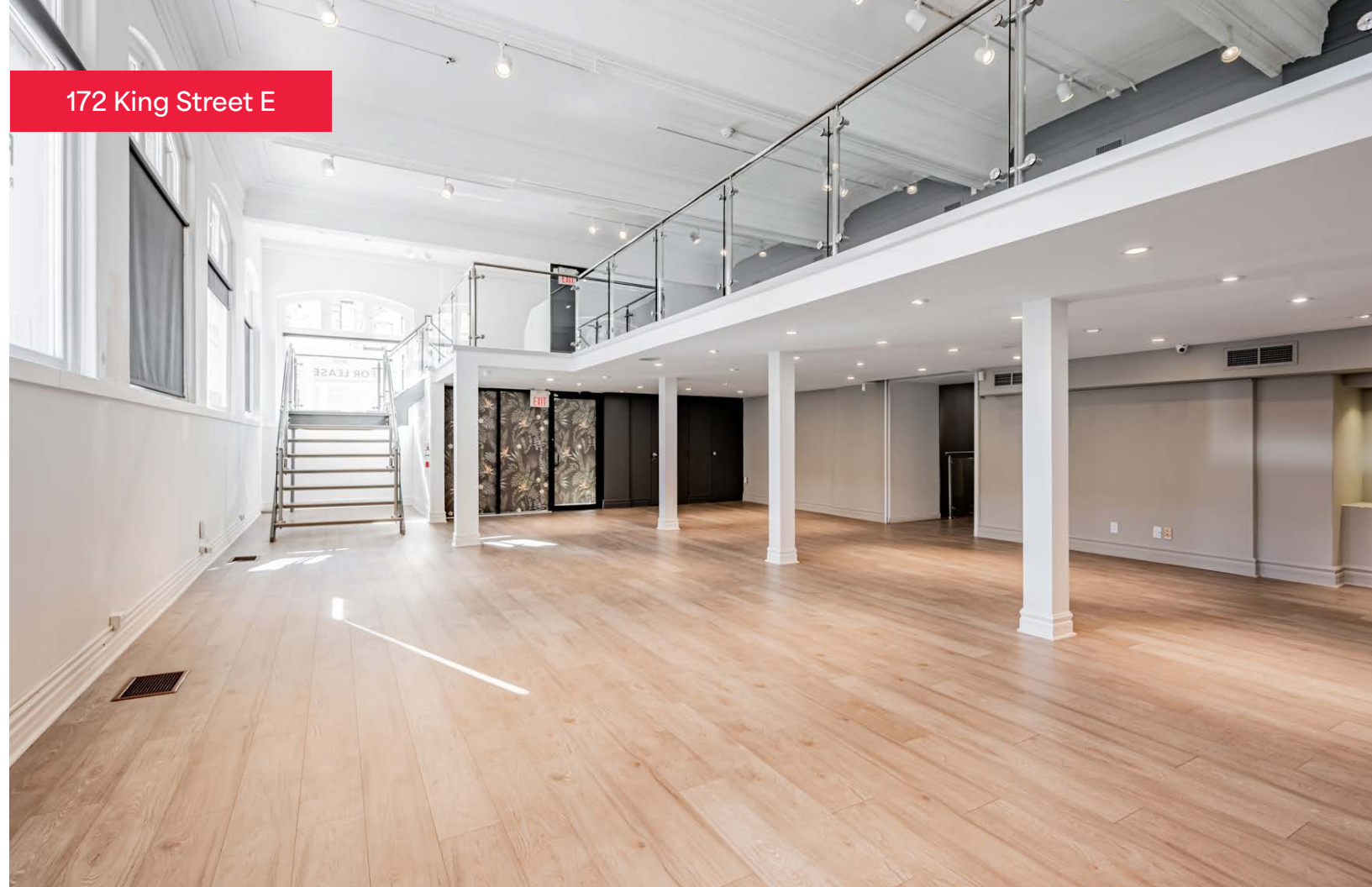
172 King Entrance



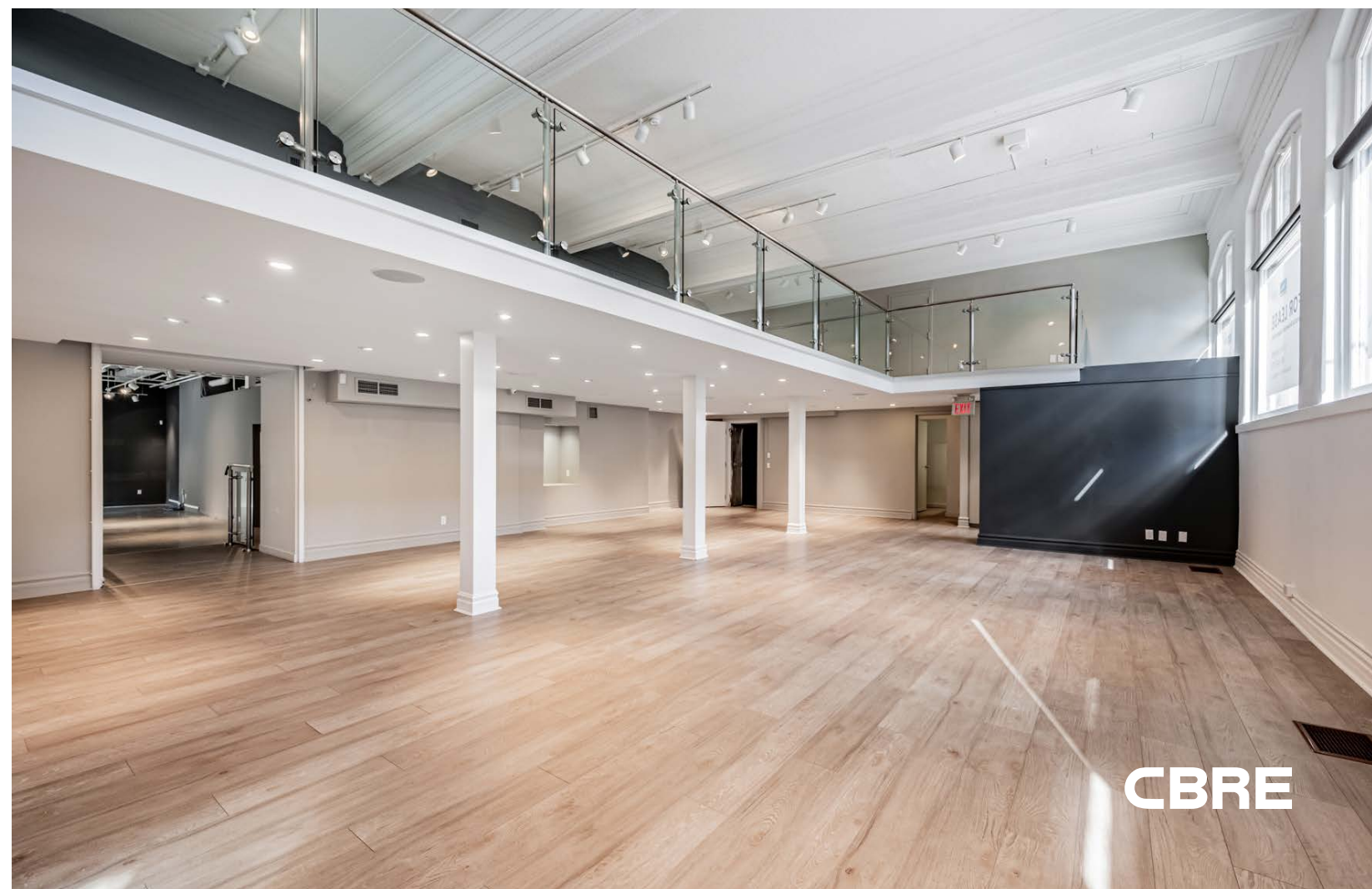
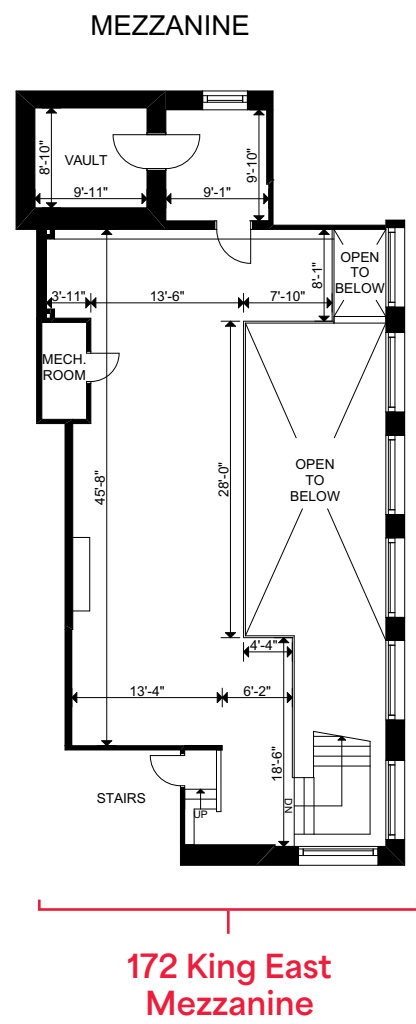
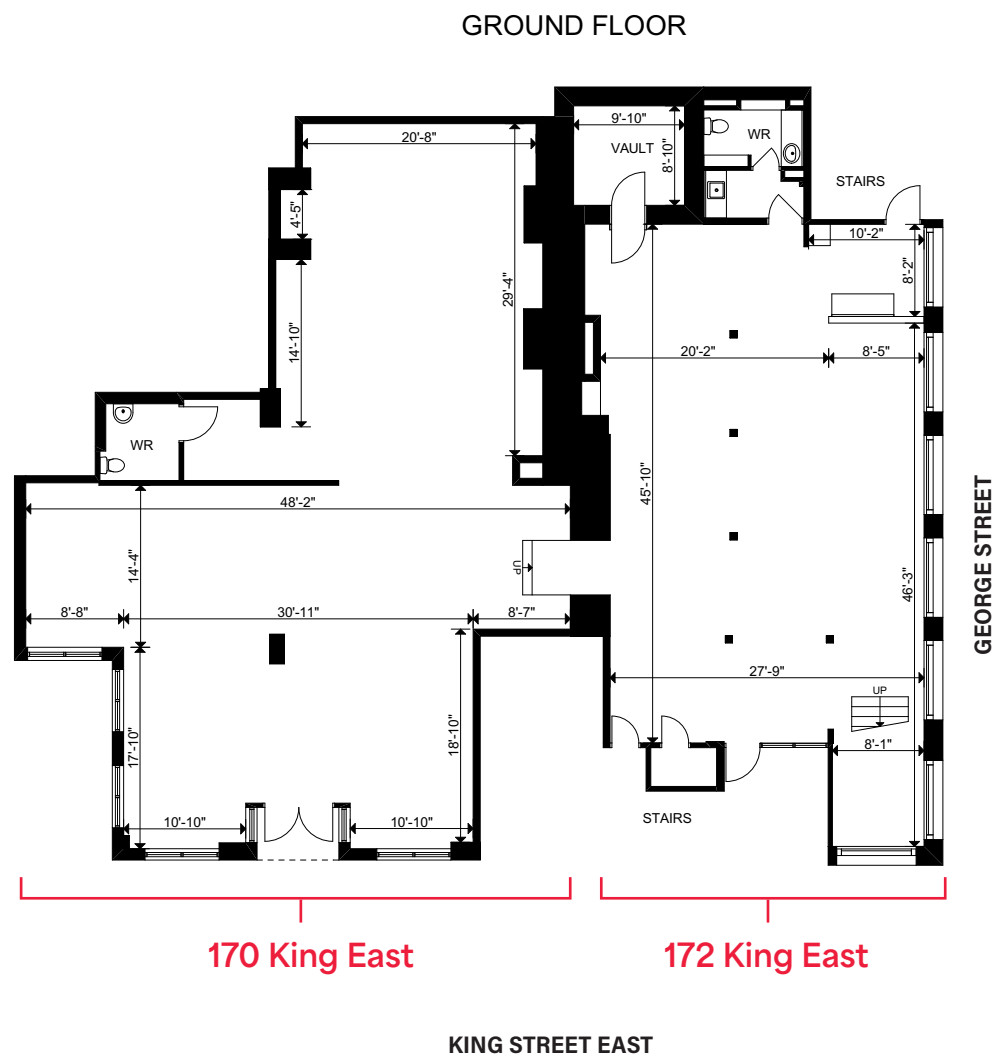
170 King Street E



172 King Street E



Floor Plan

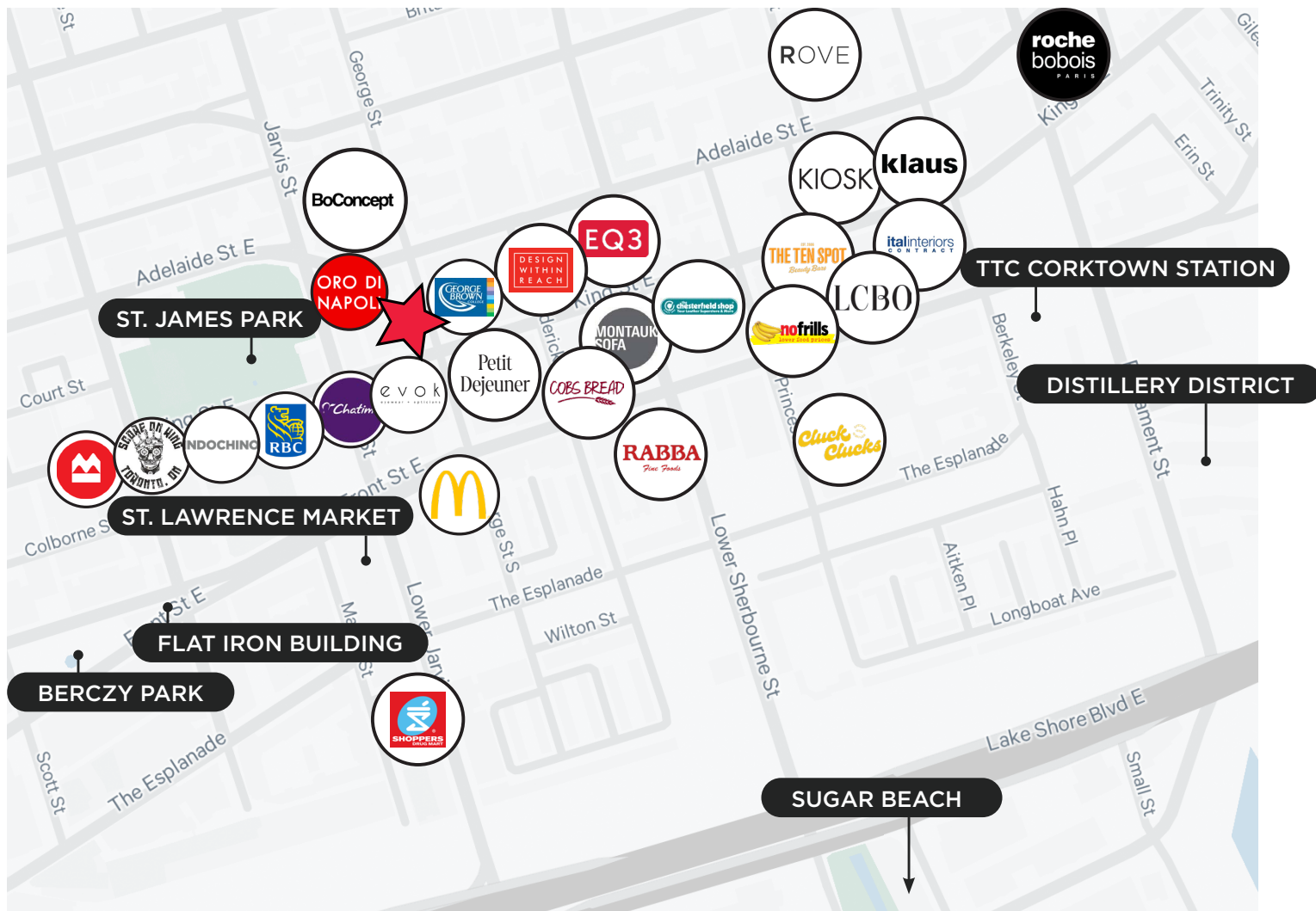


The Location

LOCATION | KING EAST DESIGN DISTRICT | DOWNTOWN EAST

170-172 King Street East is located on the northeast corner of the intersection of King East and George Street in the heart of Toronto's King East Design District (KEDD). The KEDD is a neighbourhood in the heart of Old Toronto, encompassing many thriving businesses including numerous furniture design stores, galleries, restaurants, cafes and independent shops. This neighbourhood is home to many of Toronto's oldest and most beautiful heritage buildings.

170-172 King East benefits from its proximity to George Brown College downtown campus, St. Lawrence Market, Berczy Park, Distillery District and the Financial Core.



170-172
King
East

ADVISORY TEAM

ARLIN MARKOWITZ*
Executive Vice President
416 815 2374
arlin.markowitz@cbre.com

ALEX EDMISON*
Senior Vice President
416 874 7266
alex.edmison@cbre.com

JACKSON TURNER**
Senior Vice President
416 815 2394
jackson.turner@cbre.com

TEDDY TAGGART*
Vice President
416 847 3254
teddy.taggart@cbre.com

EMILY EVERETT*
Sales Associate
647 943 4185
emily.everett@cbre.com

*Sales Representative **Broker

CBRE urban retail team

This disclaimer shall apply to CBRE Limited, Real Estate Brokerage, and to all other divisions of the Corporation; to include all employees and independent contractors ("CBRE"). The information set out herein, including, without limitation, any projections, images, opinions, assumptions and estimates obtained from third parties (the "Information") has not been verified by CBRE, and CBRE does not represent, warrant or guarantee the accuracy, correctness and completeness of the Information. CBRE does not accept or assume any responsibility or liability, direct or consequential, for the Information or the recipient's reliance upon the Information. The recipient of the Information should take such steps as the recipient may deem necessary to verify the Information prior to placing any reliance upon the Information. The Information may change and any property described in the Information may be withdrawn from the market at any time without notice or obligation to the recipient from CBRE. CBRE and the CBRE logo are the service marks of CBRE Limited and/or its affiliated or related companies in other countries. All other marks displayed on this document are the property of their respective owners. All Rights Reserved.