

193 - 195
**McCaul
Street**

Retail Space for Lease in Toronto's Discovery District
THE BREAD COMPANY CONDOS, TORONTO



STEPS TO HOSPITAL ROW, BALDWIN VILLAGE & THE U OF T CAMPUS

CBRE

193 - 195 McCaul Street



Property Details:

Address: 193 - 195 McCaul Street, Toronto

Size: 193 McCaul St: 1,247 sq. ft.
195 McCaul St: 3,023 sq. ft.

Net Rent: 193 McCaul St: \$80.00 per sq. ft.
195 McCaul St: \$65.00 per sq. ft.

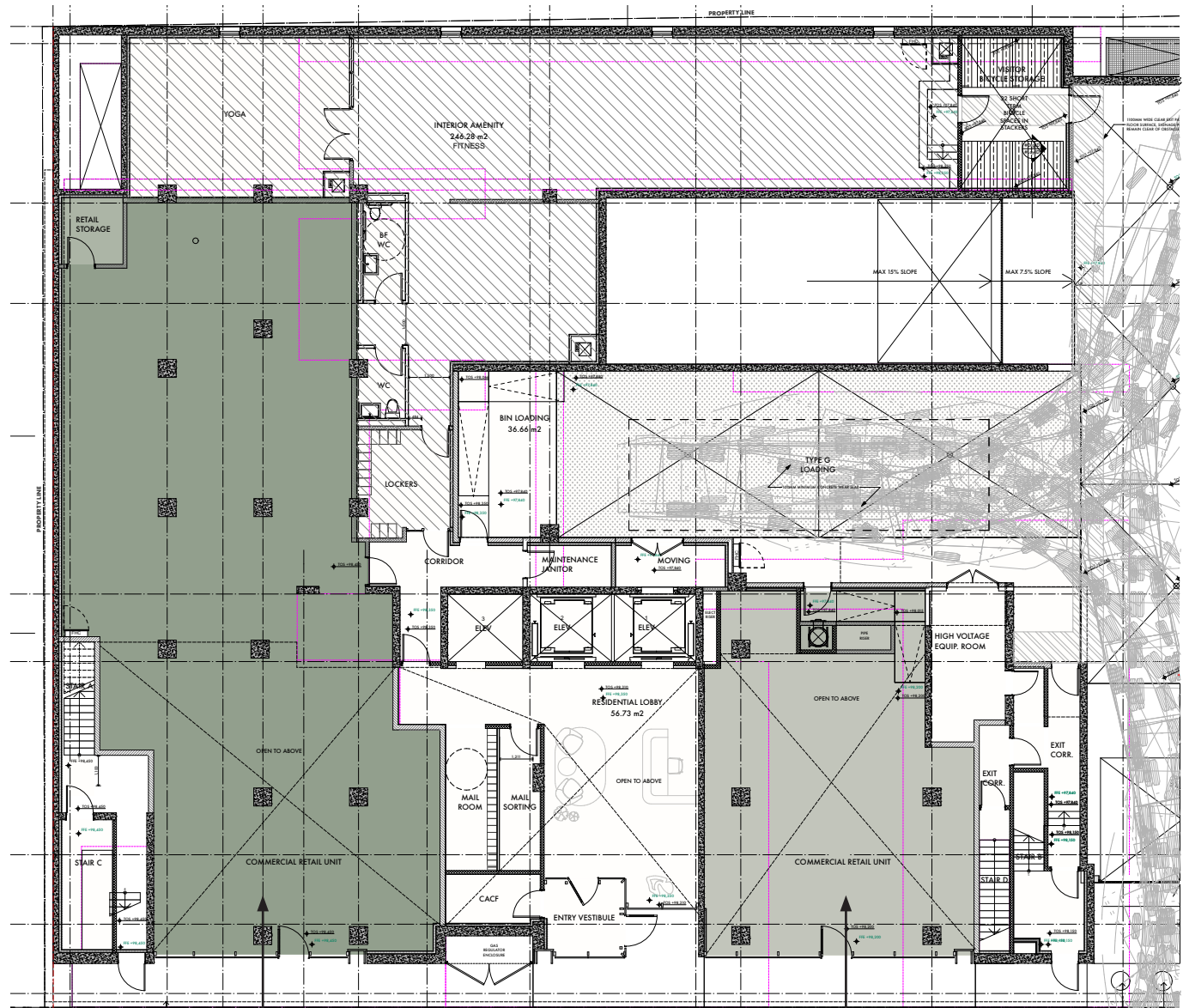
TMI: \$20.00 per sq. ft.

Available: April 1, 2025



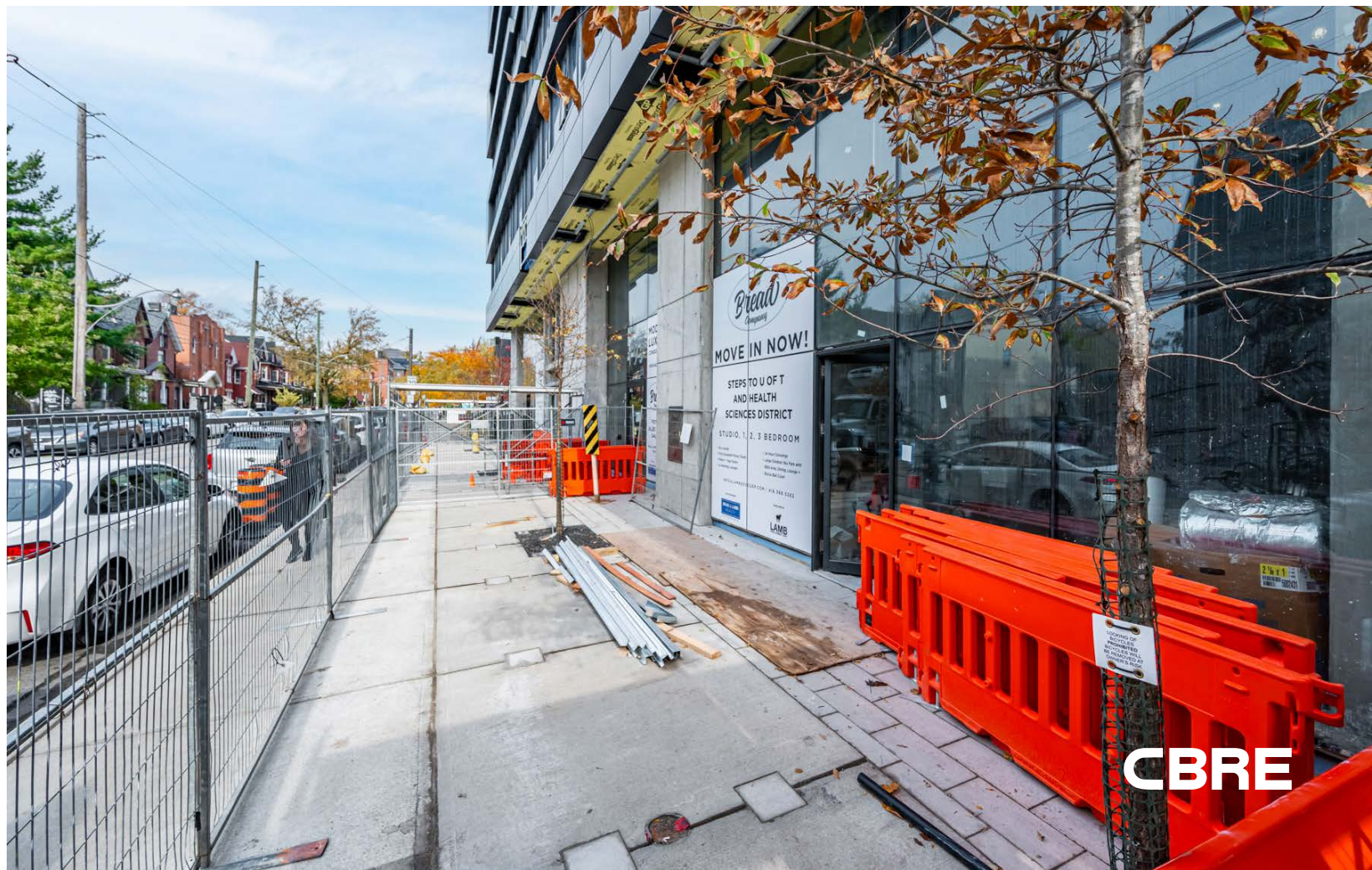
- Incredible central location adjacent to Hospital Row and steps to Balwin Village, U of T Campus and the Art Gallery of Ontario
- Located on the ground level of the Bread Company Condos, a new 309-unit condo by Lamb Development Corp
- Within walking distance to both Queen's Park and St. Patrick subway stations

Floor Plans



195 McCaul
3,023 sq. ft.

193 McCaul
1,247 sq. ft.



The Location

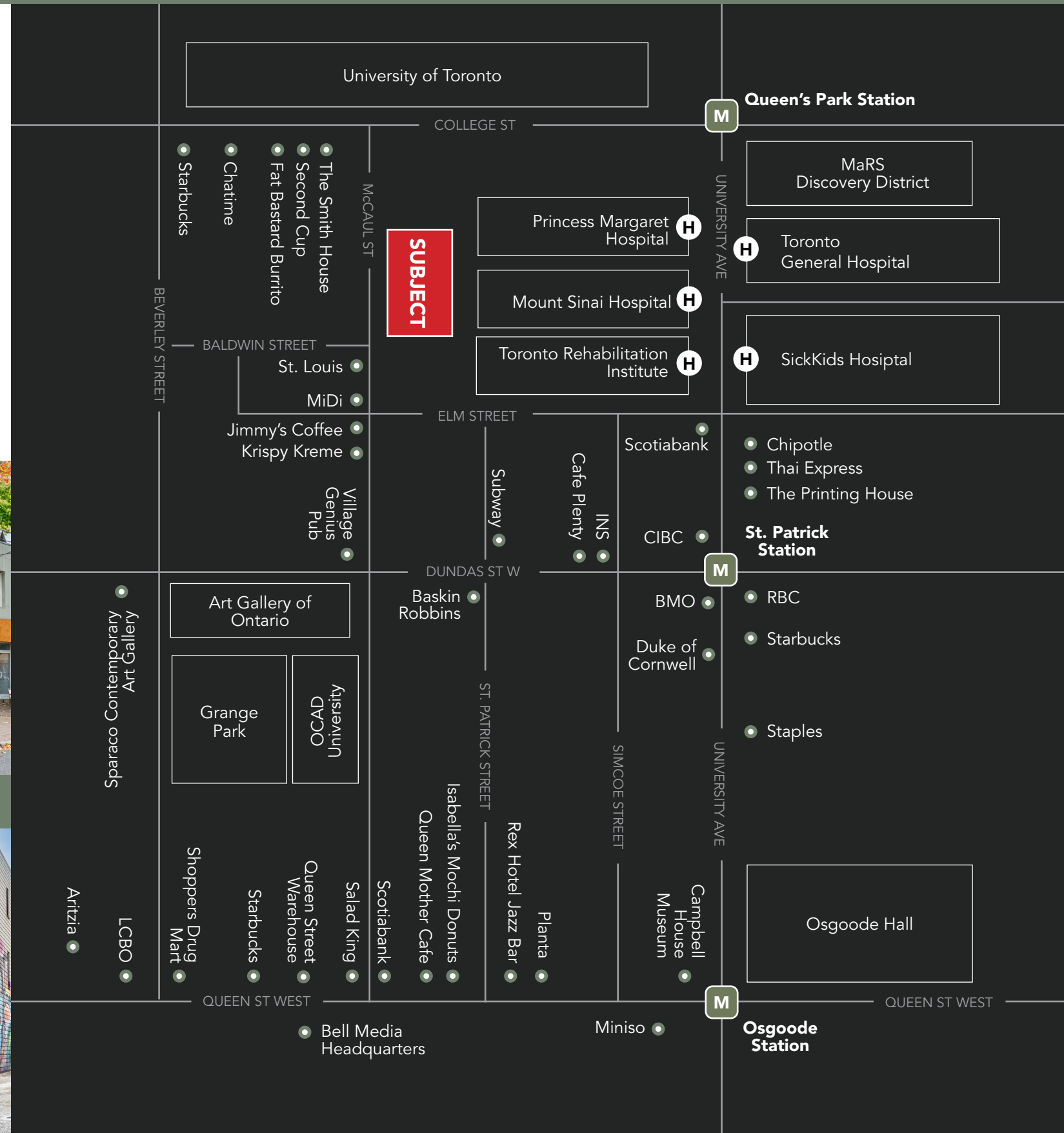
193 - 195 McCaul Street occupies a central location in downtown Toronto between College Street and Dundas Street West. It is located in the Discovery District, a commercial hub that has a high concentration of hospitals and research institutions including MaRS Discovery District, SickKids Hospital, Mount Sinai among many others.

The property benefits from its proximity to the University of Toronto, AGO as well as Baldwin Village, a quaint enclave lined with a few dozen popular restaurants, cafes and shops.

Ideally positioned among multiple public transportation lines, 193 - 195 McCaul Street is steps away from both St. Patrick and Osgoode subway stations as well the Dundas streetcar line and the College streetcar line.



Neighbouring Tenants



193 - 195
McCaul
Street

ADVISORY TEAM

ARLIN MARKOWITZ*
Executive Vice President
416 815 2374
arlin.markowitz@cbre.com

ALEX EDMISON*
Senior Vice President
416 874 7266
alex.edmison@cbre.com

JACKSON TURNER**
Senior Vice President
416 815 2394
jackson.turner@cbre.com

TEDDY TAGGART*
Vice President
416 847 3254
teddy.taggart@cbre.com

EMILY EVERETT*
Sales Associate
647 943 4185
emily.everett@cbre.com

*Sales Representative **Broker

CBRE urban retail team

This disclaimer shall apply to CBRE Limited, Real Estate Brokerage, and to all other divisions of the Corporation; to include all employees and independent contractors ("CBRE"). The information set out herein, including, without limitation, any projections, images, opinions, assumptions and estimates obtained from third parties (the "Information") has not been verified by CBRE, and CBRE does not represent, warrant or guarantee the accuracy, correctness and completeness of the Information. CBRE does not accept or assume any responsibility or liability, direct or consequential, for the Information or the recipient's reliance upon the Information. The recipient of the Information should take such steps as the recipient may deem necessary to verify the Information prior to placing any reliance upon the Information. The Information may change and any property described in the Information may be withdrawn from the market at any time without notice or obligation to the recipient from CBRE. CBRE and the CBRE logo are the service marks of CBRE Limited and/or its affiliated or related companies in other countries. All other marks displayed on this document are the property of their respective owners. All Rights Reserved.