

340-344
King
East

Prime Retail / Showroom Space for Lease in Corktown



Located At the Corner of King Street East & Parliament Street

CBRE urban retail team



Property Details:

Address: 340-344 King Street East, Toronto

Size: 6,000 sq. ft.

Net Rent: Please contact listing agents

TMI: \$17.19 per sq. ft.

Available: Immediately

- Bright and open lower-level space with high ceilings and ample natural light throughout
- Excellent corner location in Corktown
- Vibrant, high-traffic area
- Across the street from the future Corktown Station (part of the Ontario Line)
- Neighbouring retailers and traffic drivers include: Roche Bobois, Roselle Desserts, Reyna on King, Home Societe, MUST Toronto, Blinds to Go, Spaccio, Gusto 501 and many more



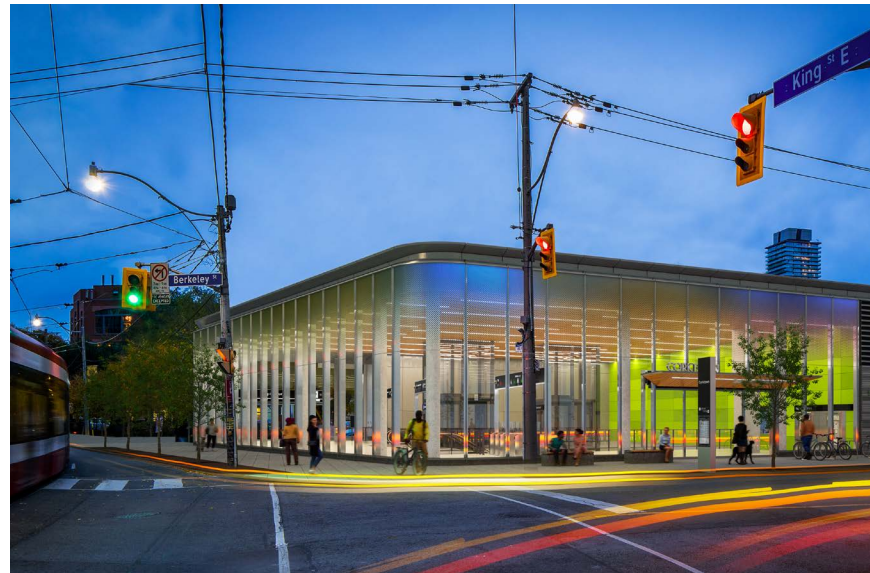
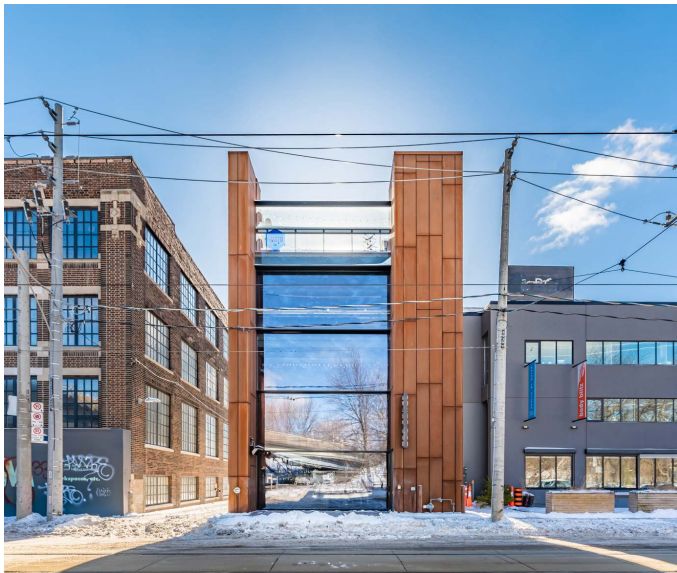


The Location

340-344 King Street East is located in Downtown East in the heart of Corktown, one of Toronto's oldest neighbourhoods. It has become a popular neighbourhood for young professionals due to its central location and easy access to Toronto's business and entertainment districts as well as its proximity to the Distillery District, St. Lawrence Market and Leslieville.

Corktown is home to many beautiful Victorian homes as well as vacated industrial buildings that have been converted into shops, lofts and studio space that give the neighbourhood added charm. In recent years the area has become a new hot-spot to grab a drink or a bite to eat thanks to Gusto 501, Spaccio (Terroni), Alo, Reyna and other popular local spots making Corktown home.

Downtown East has seen remarkable growth and significant change in the past ten years. There are currently several large scale office developments and residential condominiums in various stages of development in the neighbourhood. Future growth will only be further fueled by the addition of a subway stop in the neighbourhood. Corktown subway station, part of the new 15.6 km Ontario Line, will be built across the street from 340-344 King East.



340-344
King
East

ADVISORY TEAM

ARLIN MARKOWITZ*
Executive Vice President
416 815 2374
arlin.markowitz@cbre.com

ALEX EDMISON*
Senior Vice President
416 874 7266
alex.edmison@cbre.com

JACKSON TURNER**
Senior Vice President
416 815 2394
jackson.turner@cbre.com

TEDDY TAGGART*
Vice President
416 847 3254
teddy.taggart@cbre.com

EMILY EVERETT*
Sales Associate
647 943 4185
emily.everett@cbre.com

*Sales Representative **Broker

CBRE urban retail team

This disclaimer shall apply to CBRE Limited, Real Estate Brokerage, and to all other divisions of the Corporation; to include all employees and independent contractors ("CBRE"). The information set out herein, including, without limitation, any projections, images, opinions, assumptions and estimates obtained from third parties (the "Information") has not been verified by CBRE, and CBRE does not represent, warrant or guarantee the accuracy, correctness and completeness of the Information. CBRE does not accept or assume any responsibility or liability, direct or consequential, for the Information or the recipient's reliance upon the Information. The recipient of the Information should take such steps as the recipient may deem necessary to verify the Information prior to placing any reliance upon the Information. The Information may change and any property described in the Information may be withdrawn from the market at any time without notice or obligation to the recipient from CBRE. CBRE and the CBRE logo are the service marks of CBRE Limited and/or its affiliated or related companies in other countries. All other marks displayed on this document are the property of their respective owners. All Rights Reserved.