

200

qsw

200 Queen Street West, Toronto

Prime Retail for Lease

Steps from the Intersection of Queen St W & University Ave

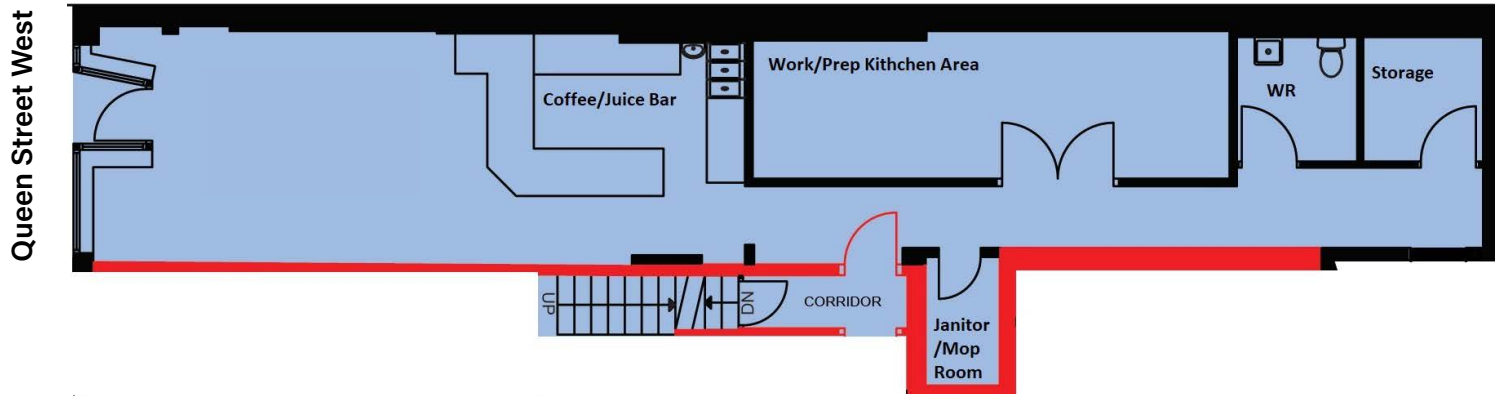




200 Queen Street West Property Details

Size: 1,142 sq. ft.
 Net Rent: \$91.00 per sq. ft.
 TMI: \$32.01 per sq. ft.
 Available: Immediately

- Located just west of the busy intersection of Queen and University
- Steps to Osgoode subway station and directly on the 501 Queen streetcar route
- Neighbouring tenants include Planta, Miniso, Rexall, Umbra, Isabella's Mochi Donuts, Aritzia, LCBO, Chick-fil-A, Shoppers Drug Mart etc.



The Location Queen Street West

John Street

- Shoppers Drug Mart
- Holy Cow Steakhouse
- Garden View

Starbucks

- Wine Rack
- Me Va Me
- Queen Street Warehouse
- Pizza Pizza
- Au Merveilleux de Fred

McCaul Street

- Scotiabank
- Korean Grill House
- Ginger Restaurant
- Queen Mother Cafe
- Flame Sushi
- 200 Queen W**
- Hunny Pot

St Patrick Street

- The Rex Hotel
- Planta Queen

University Avenue

- Campbell House Museum
- Osgoode Hall

Queen Street West

M

Duncan Street

- Chipotle
- Clearly
- Scapriano Shoes
- Bell Media Headquarters
- OD Toronto
- Civello Salon

Subway

- Touhenboku Ramen
- Pho Vistro
- Little India
- Miss Jones
- HotBlack Coffee
- Adrenaline Tattoos
- Azkadenya Restaurant
- Hakata Shoryuken Ramen
- Real Fruit Bubble Tea
- Miniso

Simcoe Street

- Rexall



200
qsw



Contact

ARLIN MARKOWITZ*
Executive Vice President
416 815 2374
arlin.markowitz@cbre.com

ALEX EDMISON*
Senior Vice President
416 874 7266
alex.edmison@cbre.com

JACKSON TURNER**
Senior Vice President
416 815 2394
jackson.turner@cbre.com

TEDDY TAGGART*
Vice President
416 847 3254
teddy.taggart@cbre.com

EMILY EVERETT*
Sales Associate
647 943 4185
emily.everett@cbre.com

*Sales Representative

**Broker

CBRE

This disclaimer shall apply to CBRE Limited, and to all divisions of the Corporation ("CBRE"). The information set out herein (the "Information") has not been verified by CBRE, and CBRE does not represent, warrant or guarantee the accuracy, correctness and completeness of the Information. CBRE does not accept or assume any responsibility or liability, direct or consequential, for the Information or the recipient's reliance upon the Information. The recipient of the Information should take such steps as the recipient may deem necessary to verify the Information prior to placing any reliance upon the Information. The Information may change and any property described in the Information may be withdrawn from the market at any time without notice or obligation to the recipient from CBRE.