

198
Sudbury
Street

West Queen West Retail for Lease
Located at Queen West & Sudbury Street



CBRE

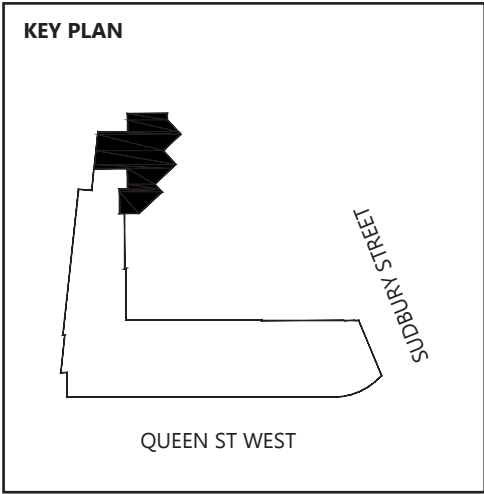
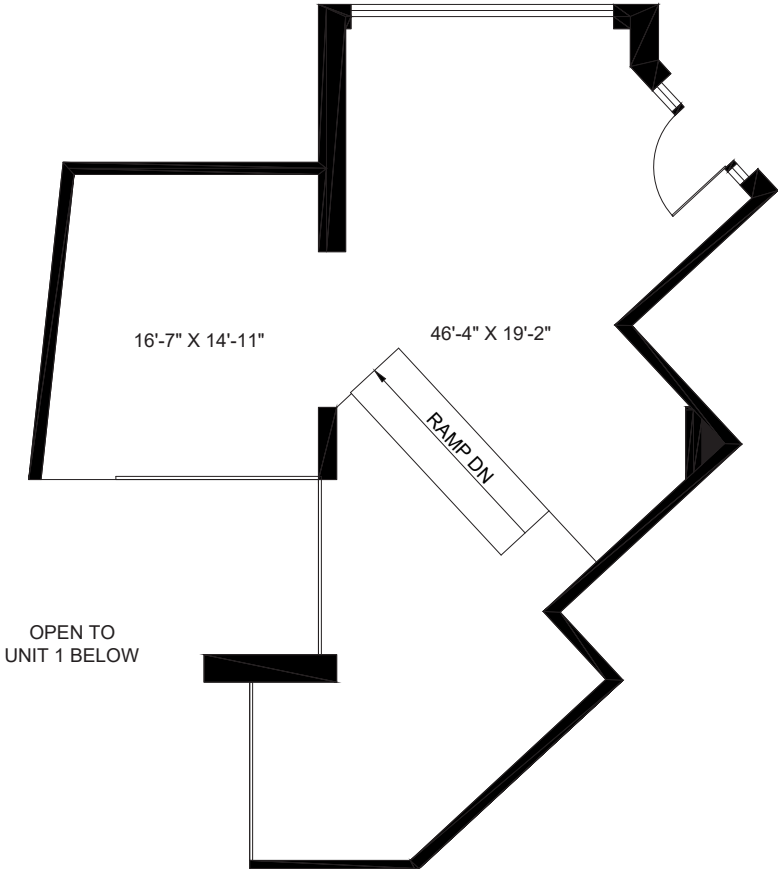
198 Sudbury Street

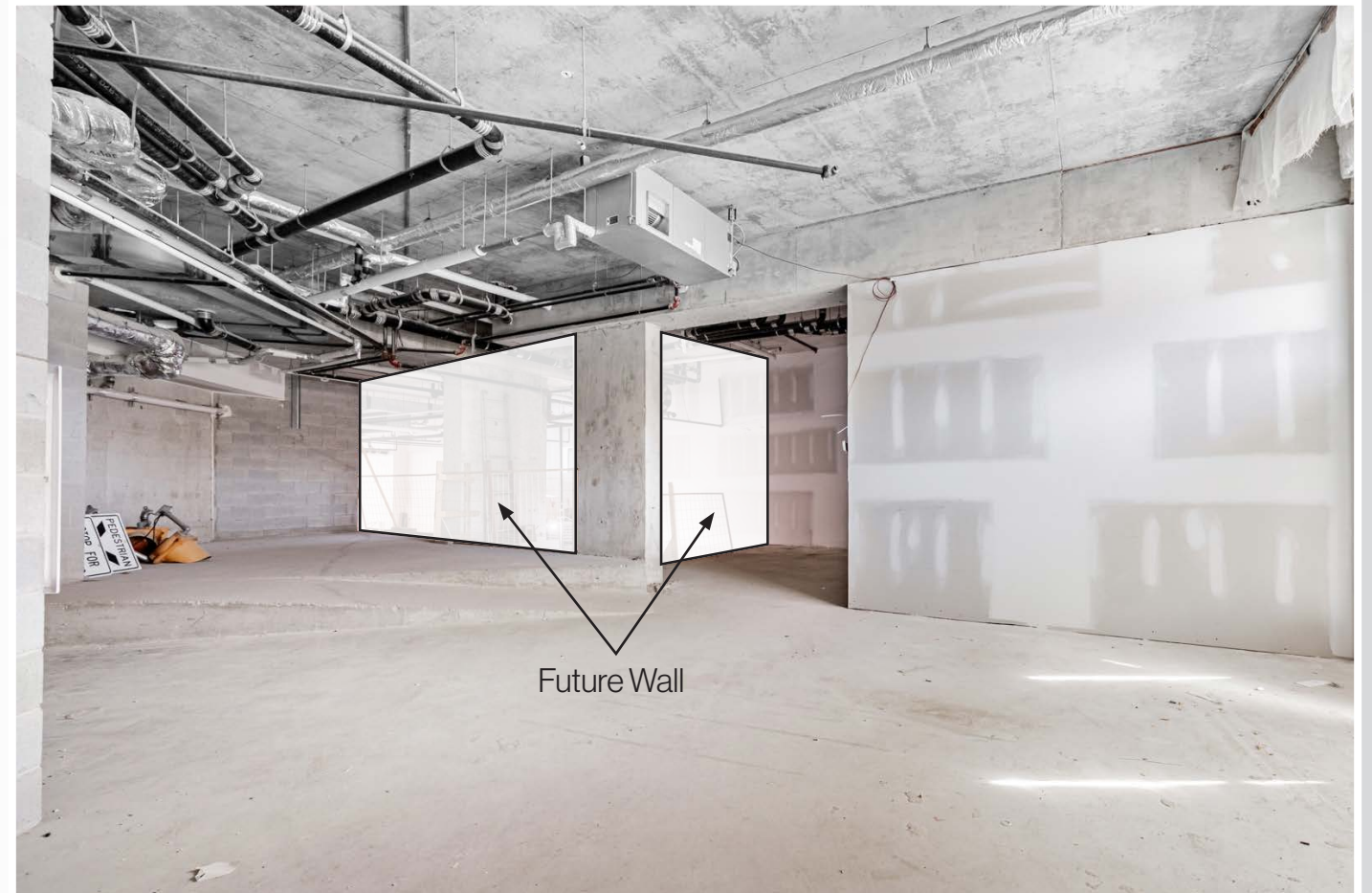
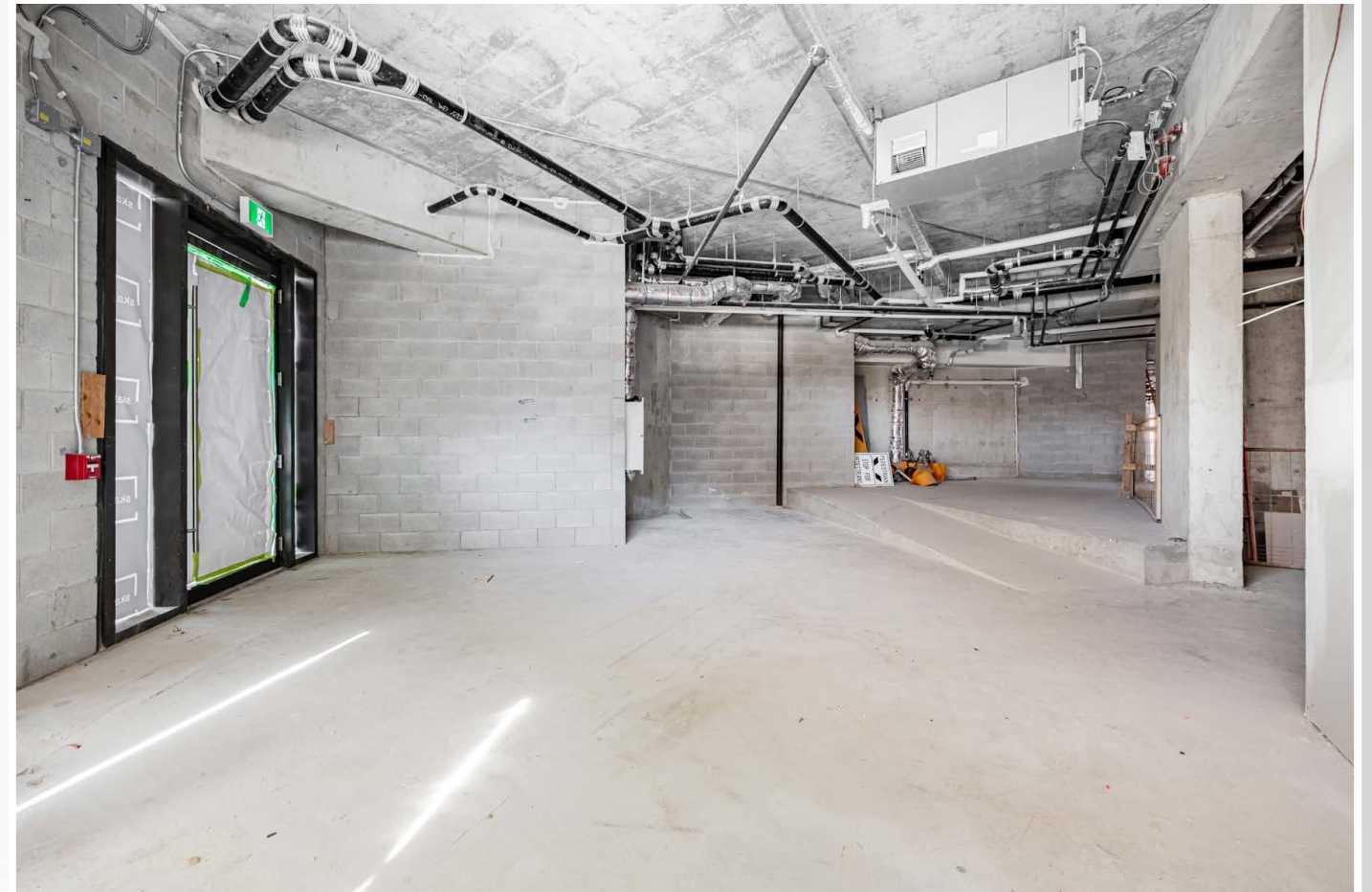
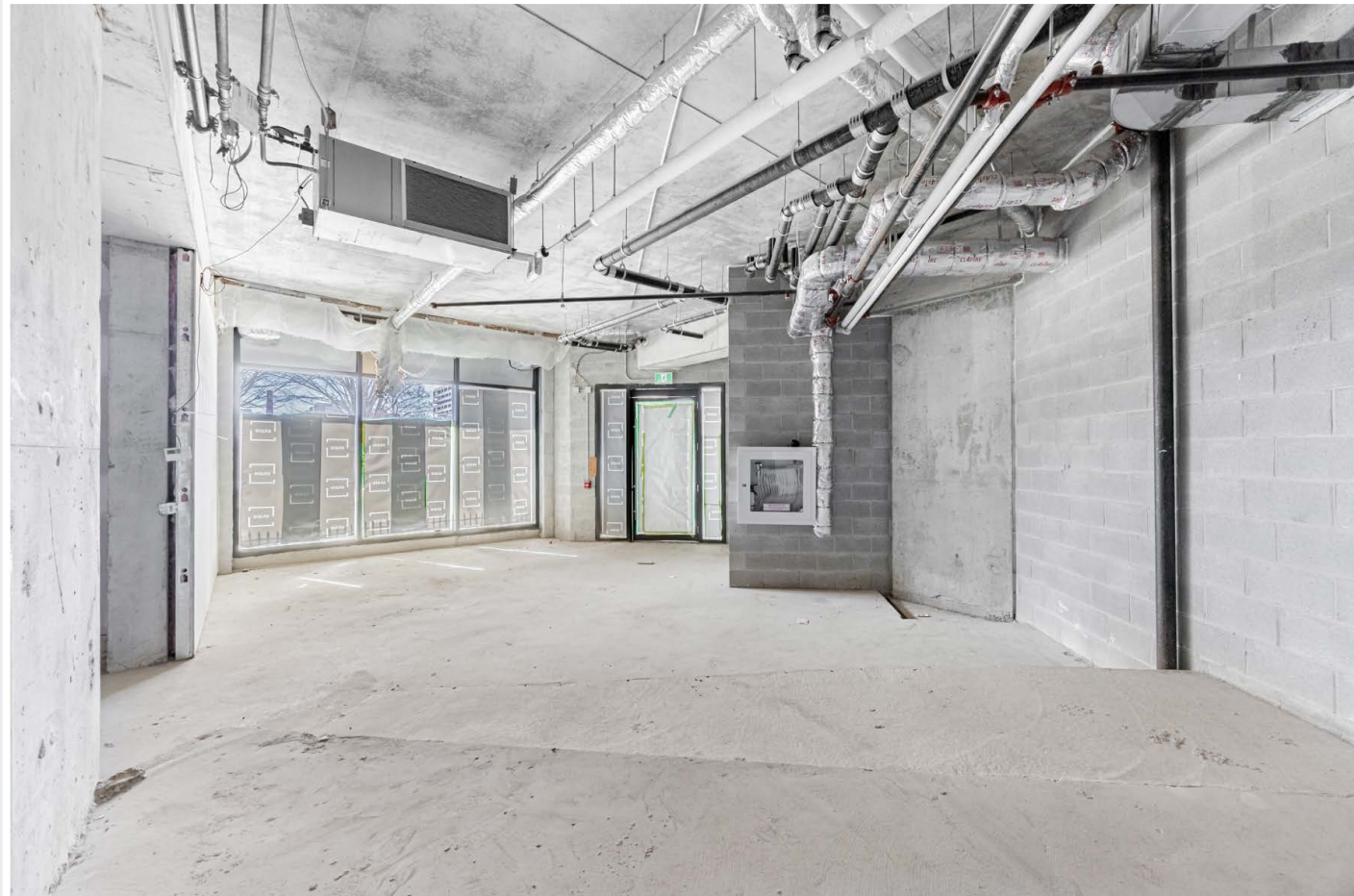
Property Details

Size: 1,128 sq. ft.
Net Rent: \$25.00 per sq. ft.
TMI: \$22.50 per sq. ft.
Available: Immediately

Property Highlights

- Located on the ground level of 1181 Queen West Condos
- Incredible West Queen West location directly on the 501 Queen streetcar line
- Directly across the street from the The Gladstone Hotel
- Neighbouring retailers and traffic drivers include Cold Tea, The Drake Hotel, Metro, FreshCo and Starbucks.





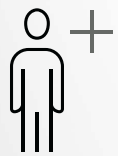
THE LOCATION

WEST QUEEN WEST

198 Sudbury Street is located in the heart of West Queen West, known as Toronto's creative heart and home to hundreds of restaurants, bars, independent fashion retailers, vintage stores and boutique hotels. Anchored by nightlife and cultural destinations such as the Gladstone and The Drake hotels, West Queen West is one of Toronto's most vibrant and popular retail strips. Favourite local spots include Bar Poet, Death & Taxes, Hello 123, The Good Son and The Dog & Bear Pub.



56,029
Population



8.5%
Population Change
(2022-2027)

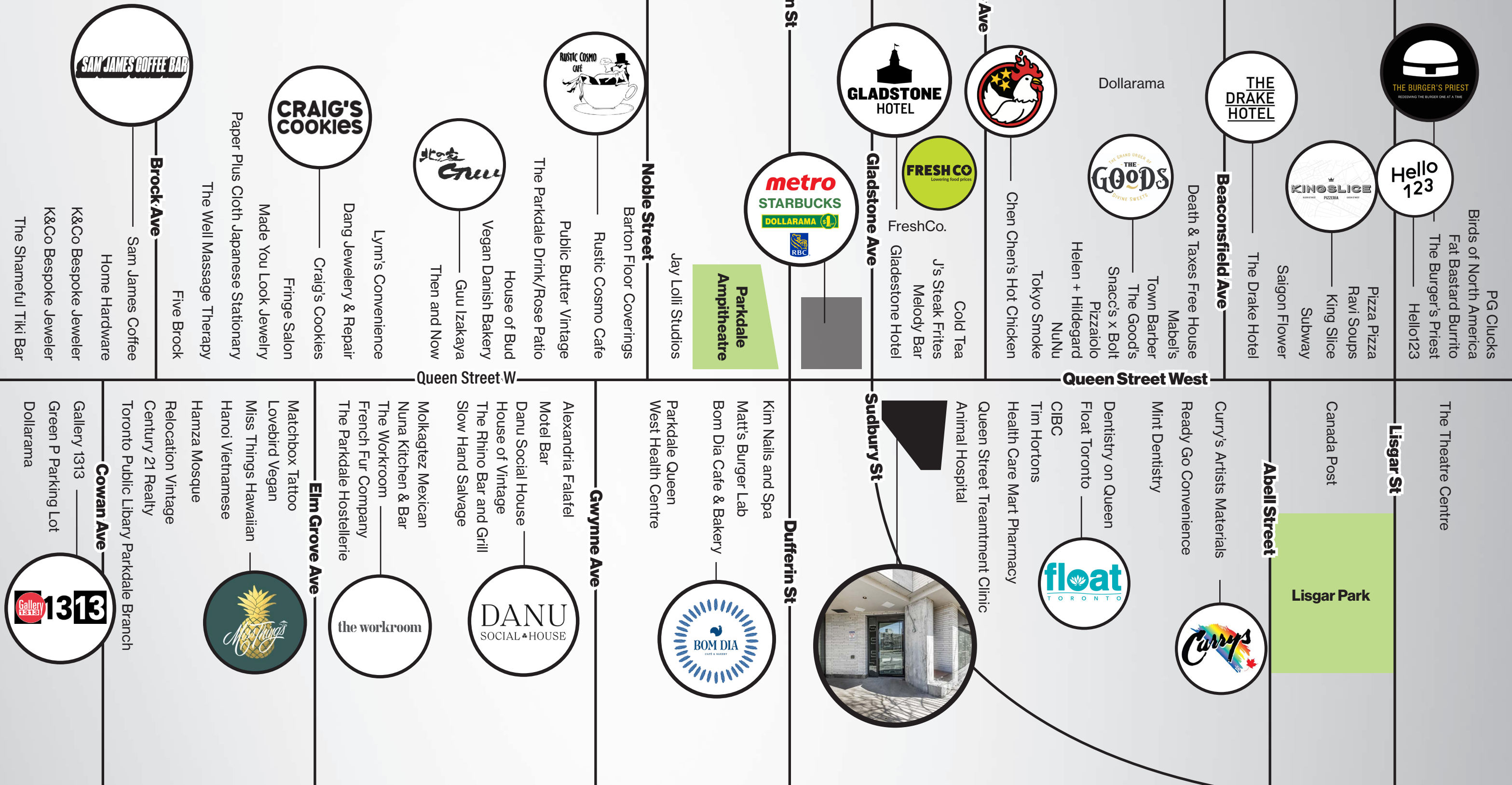


\$107,253
Avg. Household Income

*Within 1km of the Subject Property



RETAIL MAP \ WEST QUEEN WEST



Advisory Team

Arlin Markowitz*

Executive Vice President
416 815 2374
arlin.markowitz@cbre.com

Alex Edmison*

Senior Vice President
416 874 7266
alex.edmison@cbre.com

Jackson Turner**

Senior Vice President
416 815 2394
jackson.turner@cbre.com

Teddy Taggart*

Vice President
416 847 3254
teddy.taggart@cbre.com

Emily Everett*

Sales Associate
647 943 4185
emily.everett@cbre.com

*Sales Representative **Broker



CBRE

This disclaimer shall apply to CBRE Limited, Real Estate Brokerage, and to all other divisions of the Corporation; to include all employees and independent contractors ("CBRE"). The information set out herein, including, without limitation, any projections, images, opinions, assumptions and estimates obtained from third parties (the "Information") has not been verified by CBRE, and CBRE does not represent, warrant or guarantee the accuracy, correctness and completeness of the Information. CBRE does not accept or assume any responsibility or liability, direct or consequential, for the Information or the recipient's reliance upon the Information. The recipient of the Information should take such steps as the recipient may deem necessary to verify the Information prior to placing any reliance upon the Information. The Information may change and any property described in the Information may be withdrawn from the market at any time without notice or obligation to the recipient from CBRE. CBRE and the CBRE logo are the service marks of CBRE Limited and/or its affiliated or related companies in other countries. All other marks displayed on this document are the property of their respective owners. All Rights Reserved.