

# 2487 YONGE

580 sq. ft. of Retail for Lease at Yonge & Eglinton



CBRE urban retail team



# Property Details

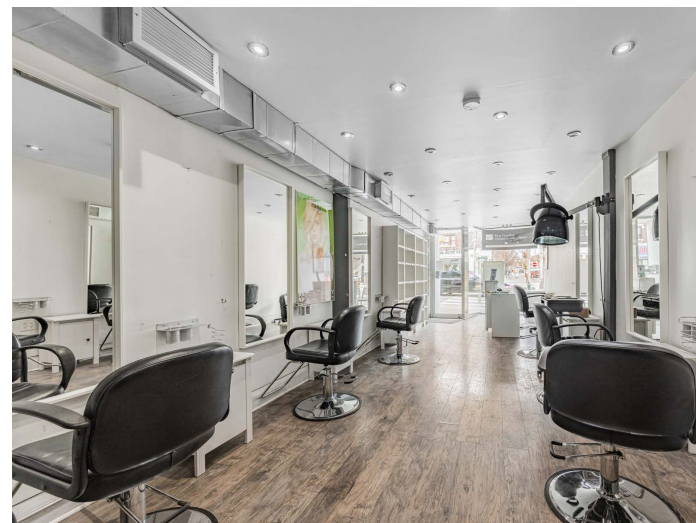
Size: 580 sq. ft.

Net Rent: \$4,110/month

TMI: \$1,935/month

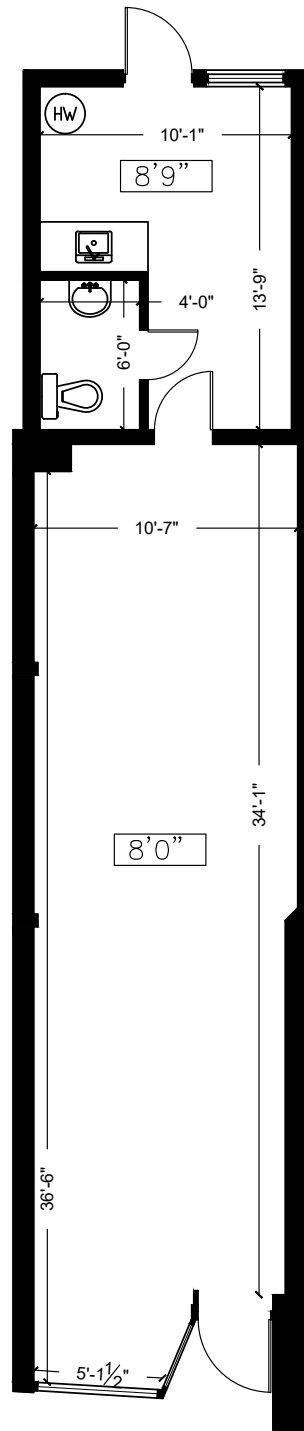
Available: Immediately

- Rare opportunity to secure right-size retail space in the Yonge and Eglinton node
- Currently set up as a hair salon but suitable for a variety of retail uses
- Neighbouring retailers include: BlackToe Running, Starbucks, De Mello Coffee, Aesop, Lululemon, Byblos Uptown, Suetables, STOCK T.C., TD Bank and BMO

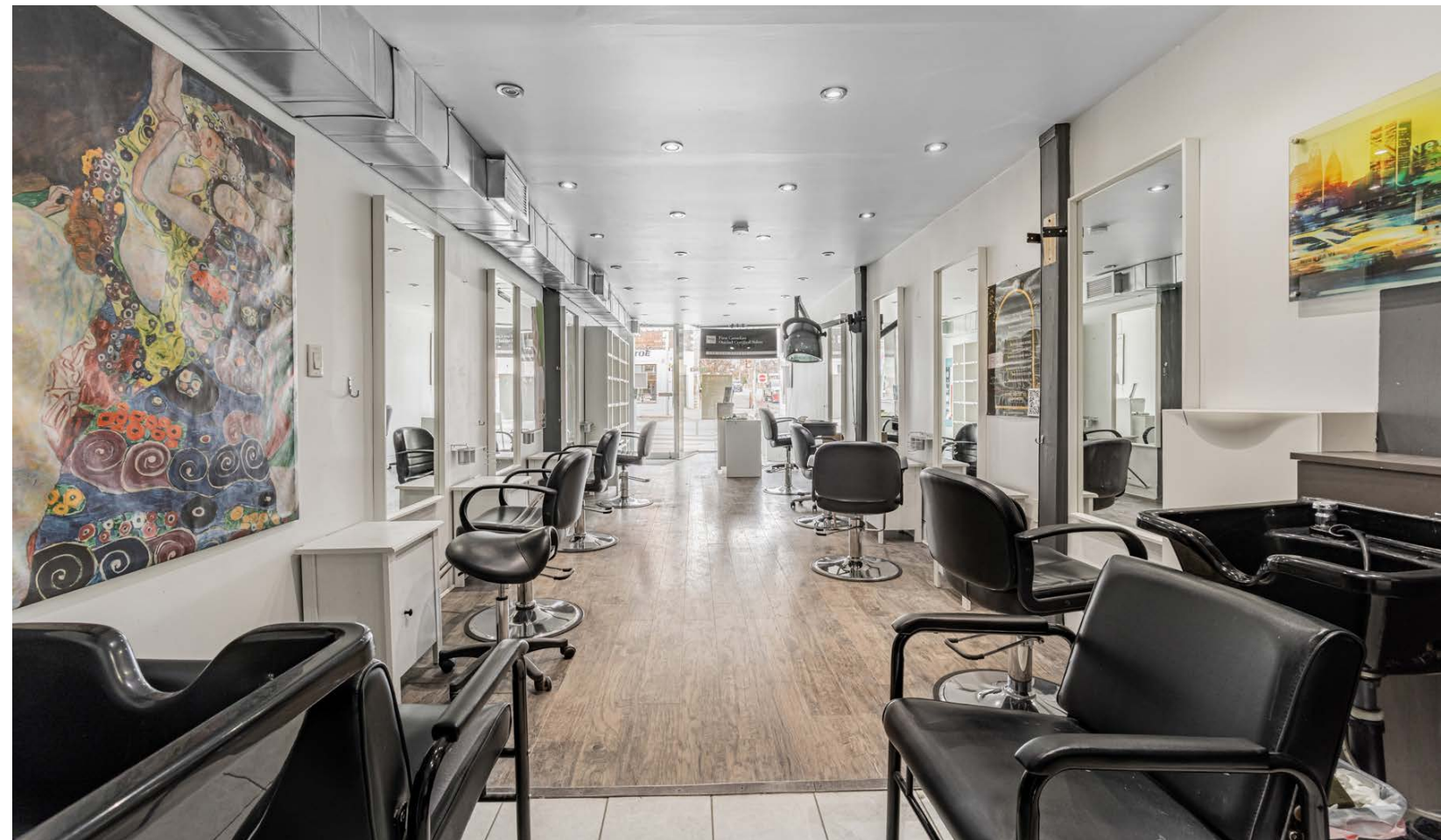




# Floor Plan



YONGE STREET





# the neighbourhood

Yonge and Eglinton is a popular midtown hub for young professionals and families. It is home to plenty of bars, restaurants, boutiques and national retailers.

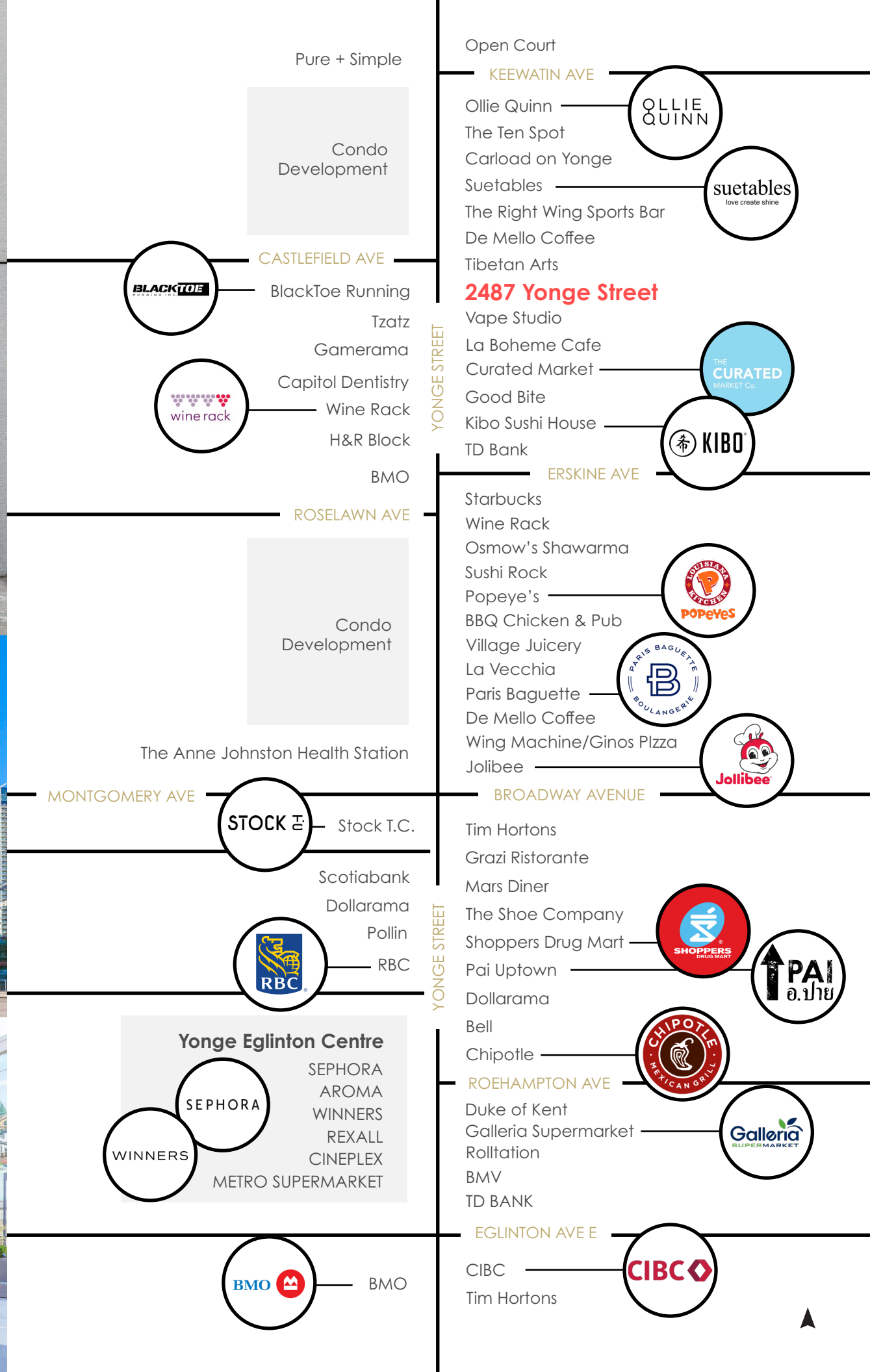
The area is surrounded by some of the most affluent residential neighbourhoods in Toronto. Developers continue to build in and around the streets that surround Yonge & Eglinton, adding density to any already bustling well-established community.

# shop

Yonge and Eglinton is one of the best shopping nodes within Toronto. People are drawn from neighbouring areas and from all over the city to shop at retailers such as Club Monaco, Aesop, Sephora, Indigo, Swarovski and Lululemon.

# eat & drink

Some of Toronto's best restaurants and bars are found at Yonge & Eglinton. Little Sister, Stock T.C., TabÜlè, Fresh, Bar Buca, PAI, Byblos Uptown and The Keg are just a few of the popular restaurants in the neighbourhood.





# Yonge & Eglinton





# Advisory Team

ARLIN MARKOWITZ\*  
Executive Vice President  
416 815 2374  
arlin.markowitz@cbre.com

ALEX EDMISON\*  
Senior Vice President  
416 874 7266  
alex.edmison@cbre.com

JACKSON TURNER\*\*  
Senior Vice President  
416 815 2394  
jackson.turner@cbre.com

TEDDY TAGGART\*  
Vice President  
416 847 3254  
teddy.taggart@cbre.com

EMILY EVERETT\*  
Sales Associate  
647 943 4185  
emily.everett@cbre.com

\*Sales Representative \*\*Broker

**CBRE**

This disclaimer shall apply to CBRE Limited, Real Estate Brokerage, and to all other divisions of the Corporation; to include all employees and independent contractors ("CBRE"). The information set out herein, including, without limitation, any projections, images, opinions, assumptions and estimates obtained from third parties (the "Information") has not been verified by CBRE, and CBRE does not represent, warrant or guarantee the accuracy, correctness and completeness of the Information. CBRE does not accept or assume any responsibility or liability, direct or consequential, for the Information or the recipient's reliance upon the Information. The recipient of the Information should take such steps as the recipient may deem necessary to verify the Information prior to placing any reliance upon the Information. The Information may change and any property described in the Information may be withdrawn from the market at any time without notice or obligation to the recipient from CBRE. CBRE and the CBRE logo are the service marks of CBRE Limited and/or its affiliated or related companies in other countries. All other marks displayed on this document are the property of their respective owners. All Rights Reserved.