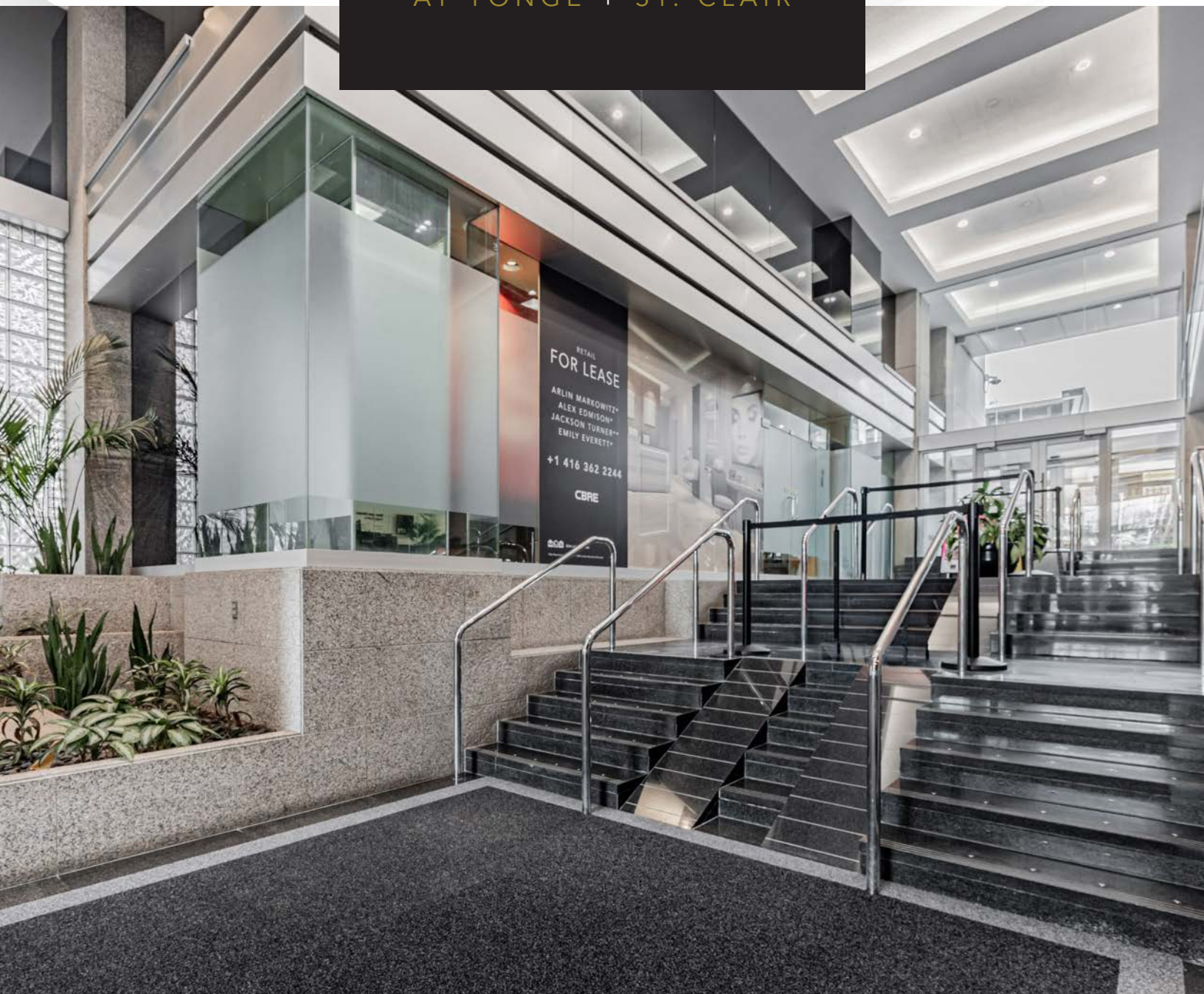


30 St. Clair

AT YONGE + ST. CLAIR



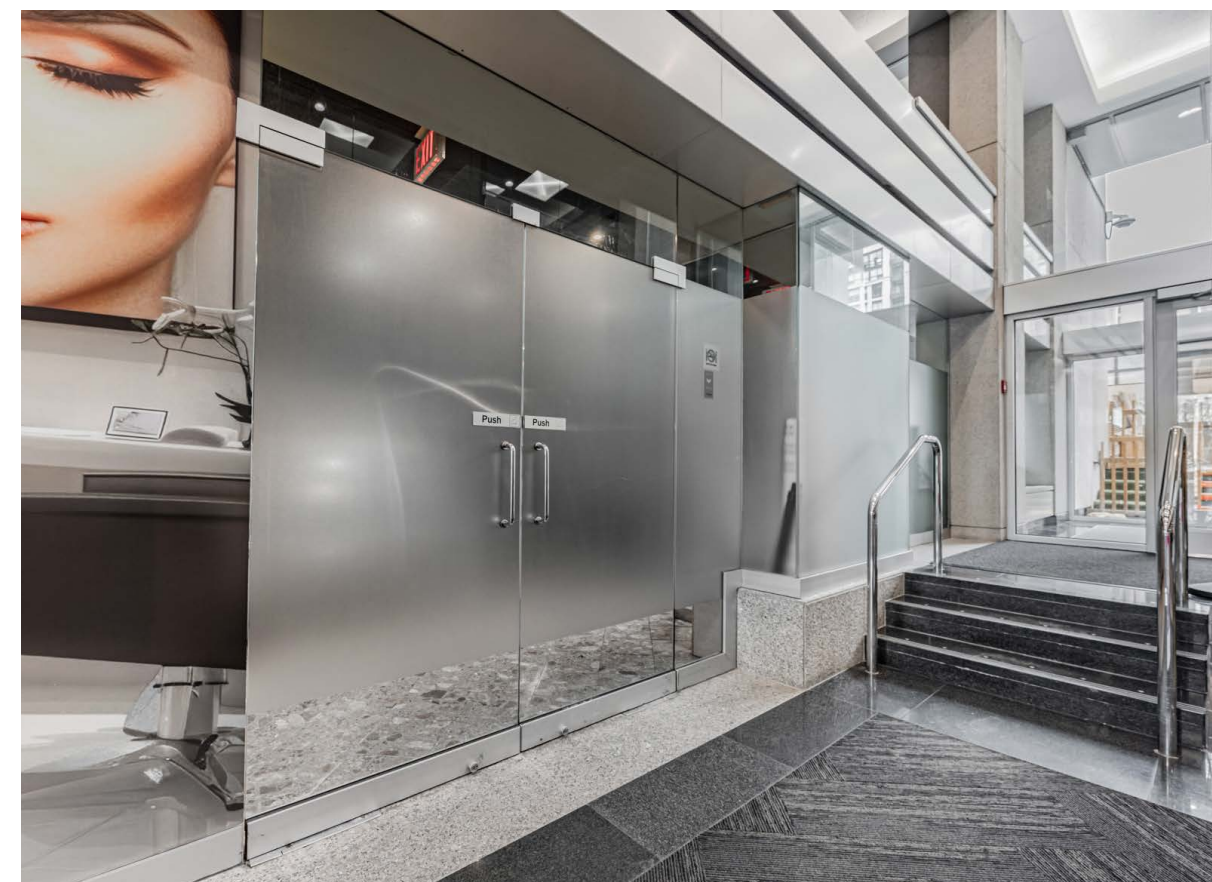
CBRE

30 St. Clair

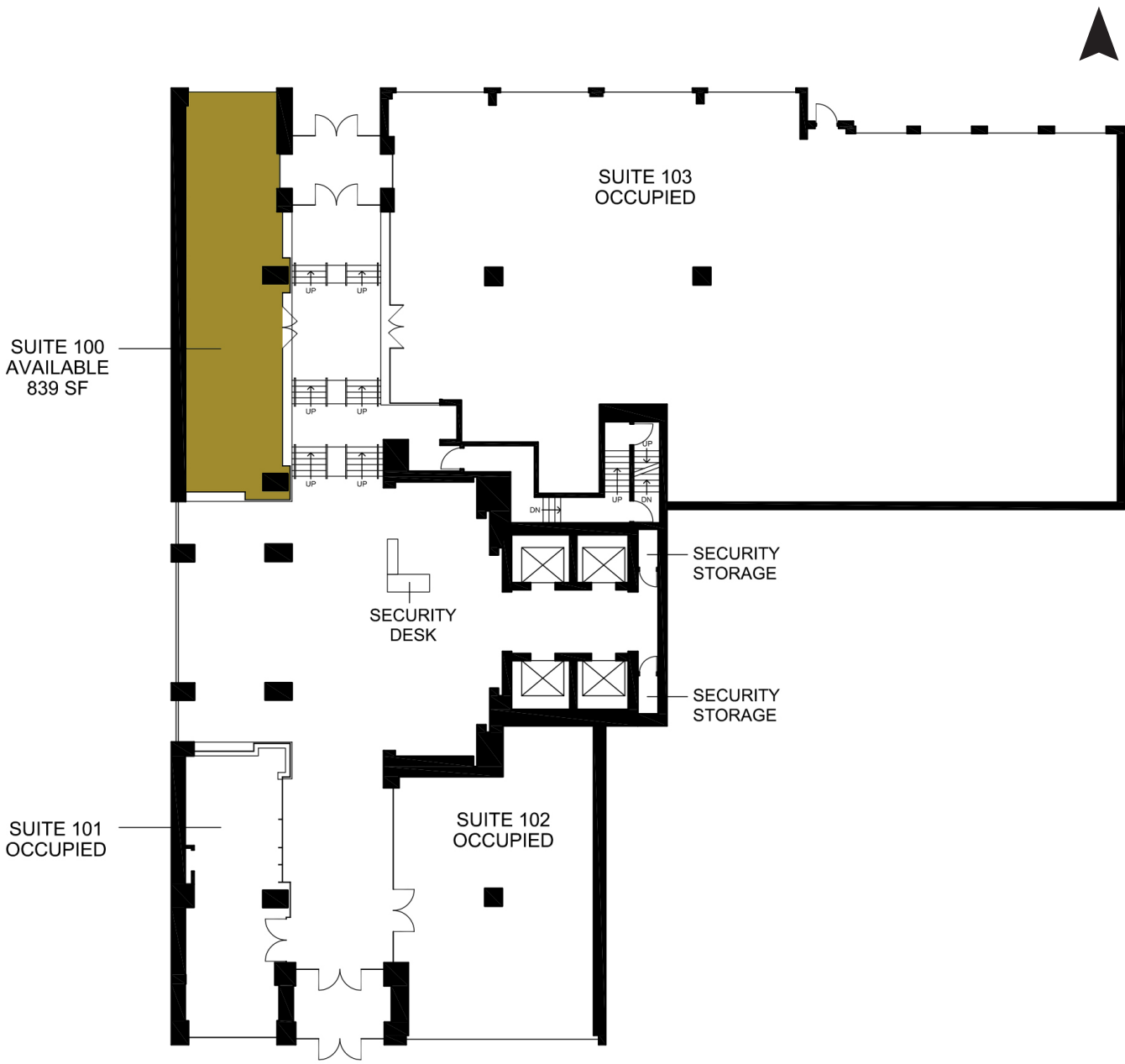
AT YONGE + ST. CLAIR

Address: Suite 100 - 30 St. Clair Avenue West, Toronto
Size: 839 sq. ft.
Gross Rent: \$2,500 per month
Available: Immediately

- Located within the lobby of an 180,164 sq. ft. office building
- High vehicular and foot traffic area
- Streetcar and subway access are steps away
- Neighbouring tenants include Cucina Buca, Grandma Loves You, RBC, Marye Be Kitchen, Loblaws, Union Social Eatery, Starbucks, Greenhouse Juice, Pilot Coffee Roasters and Scotiabank



30 ST. CLAIR AVE W FLOOR PLAN



St. Clair Avenue West



NOTABLE AREA DEVELOPMENTS



1. One Delisle



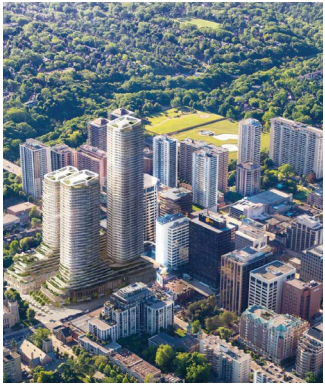
1 Delisle Avenue
Construction
371 units
44 storeys

2. The Clair



1421 Yonge Street
Pre-Construction
198 units
34 storeys

3. St. Clair Place



1485 Yonge Street
Pre-Construction
1,361 units
44,39,27,13 storeys

4. 1 St. Clair W



1 St. Clair West
Pre-Construction
340 units
49 storeys

5. 45 St. Clair W



45 St. Clair Ave W
Pre-Construction
629 units
50 storeys

6. The Notable



29 Pleasant Blvd.
Pre-Construction
409 units
50 storeys

7. 49 Jackes



49 Jackes Avenue
Pre-Construction
217 units
29 storeys

8. Yonge & Rosehill



1365 Yonge Street
Construction
239 units
17 storeys

9. The Hill Condos



1406 Yonge Street
Pre-Construction
542 units
50 storeys

10. Rosehill Tower



44 Jackes Ave
Construction
263 units
31 storeys

11. 11 Pleasant

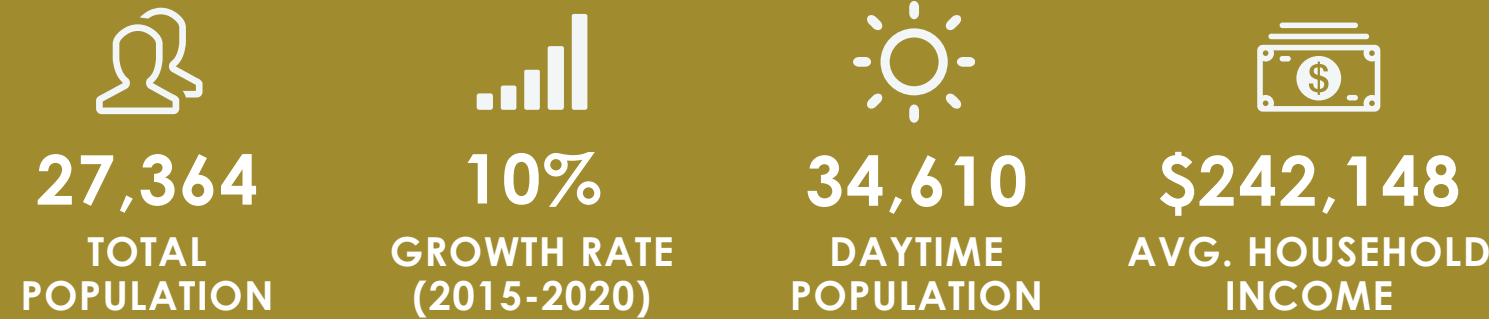


11 Pleasant Blvd.
Pre-Construction
72 units
14 storeys

12. 1303 Yonge

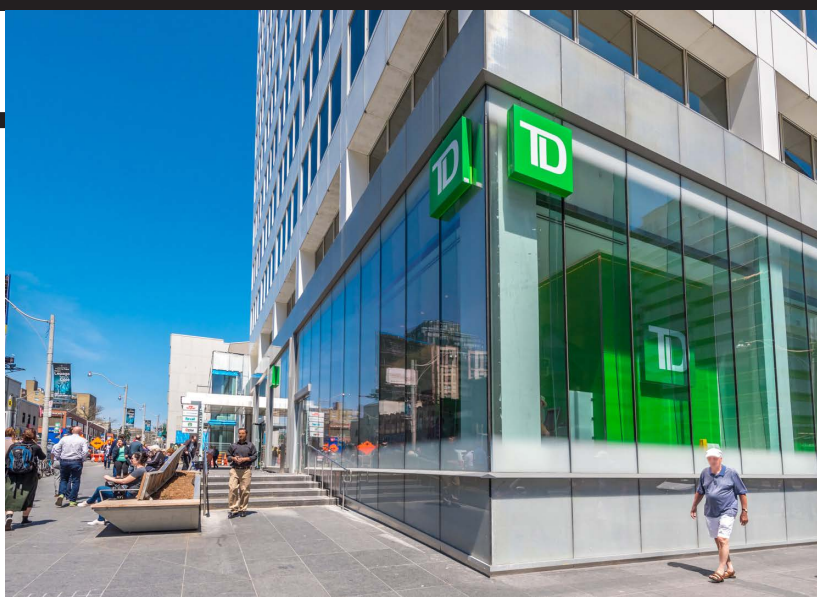


1303 Yonge Street
Pre-Construction
102 units
10 storeys



*Within 1KM Radius (Statistics Canada)

NEIGHBOURING RETAILERS





30
St. Clair

Advisors

Arlin Markowitz*
Executive Vice President
416 815 2374
arlin.markowitz@cbre.com

Alex Edmison*
Senior Vice President
416 874 7266
alex.edmison@cbre.com

Jackson Turner**
Senior Vice President
416 815 2394
jackson.turner@cbre.com

Teddy Taggart*
Vice President
416 847 3254
teddy.taggart@cbre.com

Emily Everett*
Sales Associate
416 943 4185
emily.everett@cbre.com

*Sales Representative **Broker

CBRE

This disclaimer shall apply to CBRE Limited, Real Estate Brokerage, and to all other divisions of the Corporation; to include all employees and independent contractors ("CBRE"). The information set out here-in, including, without limitation, any projections, images, opinions, assumptions and estimates obtained from third parties (the "Information") has not been verified by CBRE, and CBRE does not represent, warrant or guarantee the accuracy, correctness and completeness of the Information. CBRE does not accept or assume any responsibility or liability, direct or consequential, for the Information or the recipient's reliance upon the Information. The recipient of the Information should take such steps as the recipient may deem necessary to verify the Information prior to placing any reliance upon the Information. The Information may change and any property described in the Information may be withdrawn from the market at any time without notice or obligation to the recipient from CBRE. CBRE and the CBRE logo are the service marks of CBRE Limited and/or its affiliated or related companies in other countries. All other marks displayed on this document are the property of their respective owners. All Rights Reserved.