

Join Barry's & Fresshi at

310 Richmond
Street West



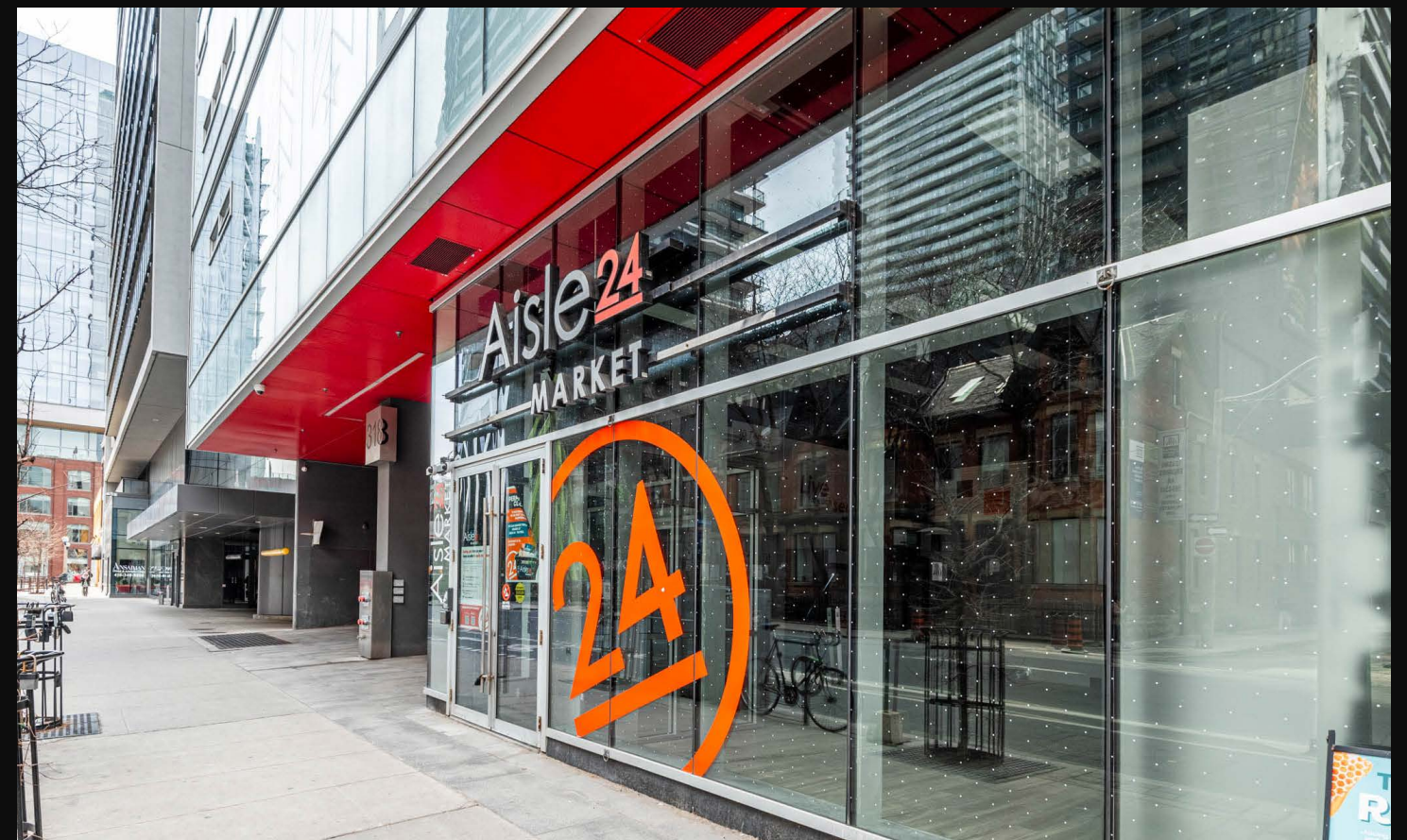
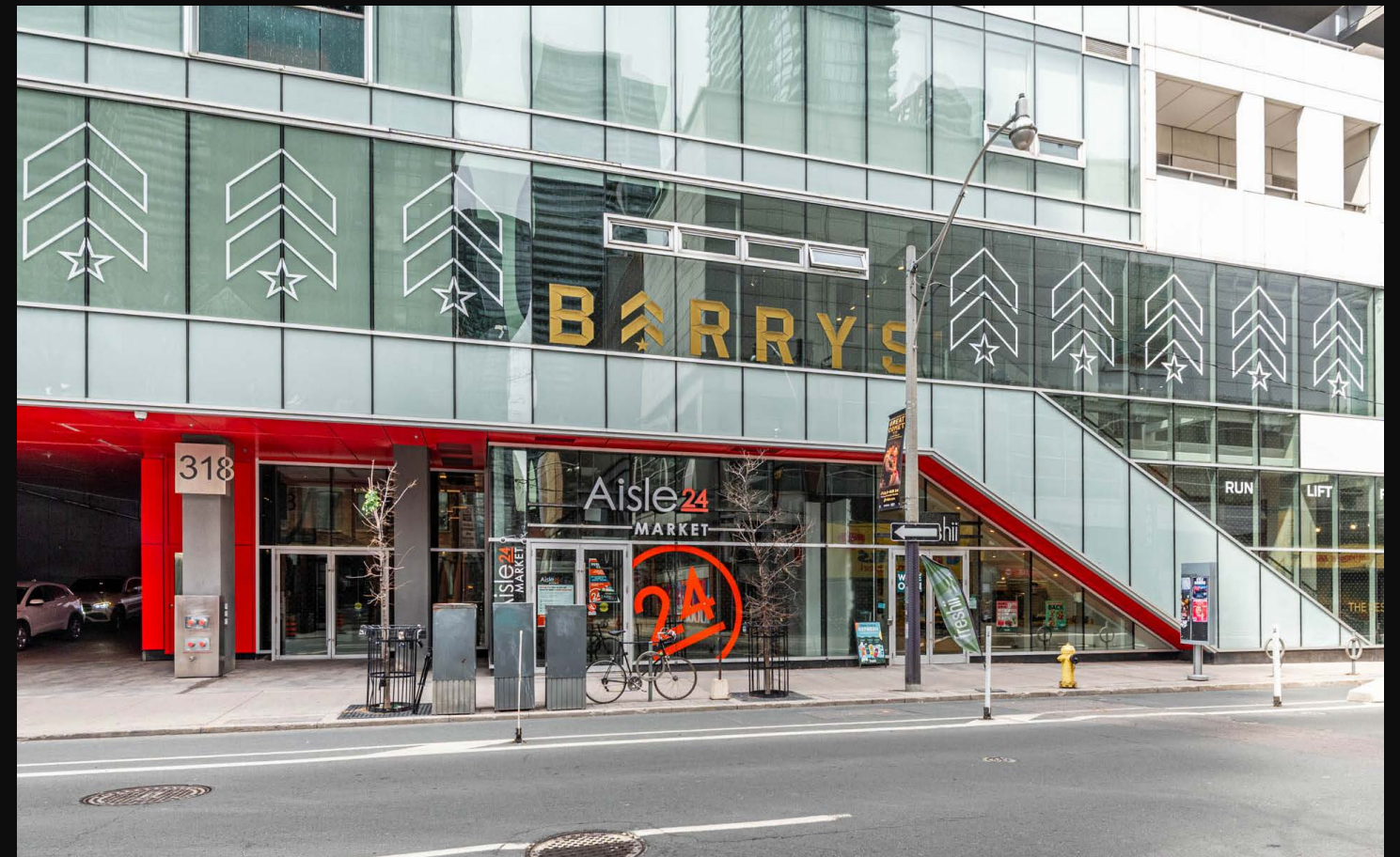
Prime Streetfront Retail for Lease in Downtown Toronto

CBRE urban retail team

Property Details

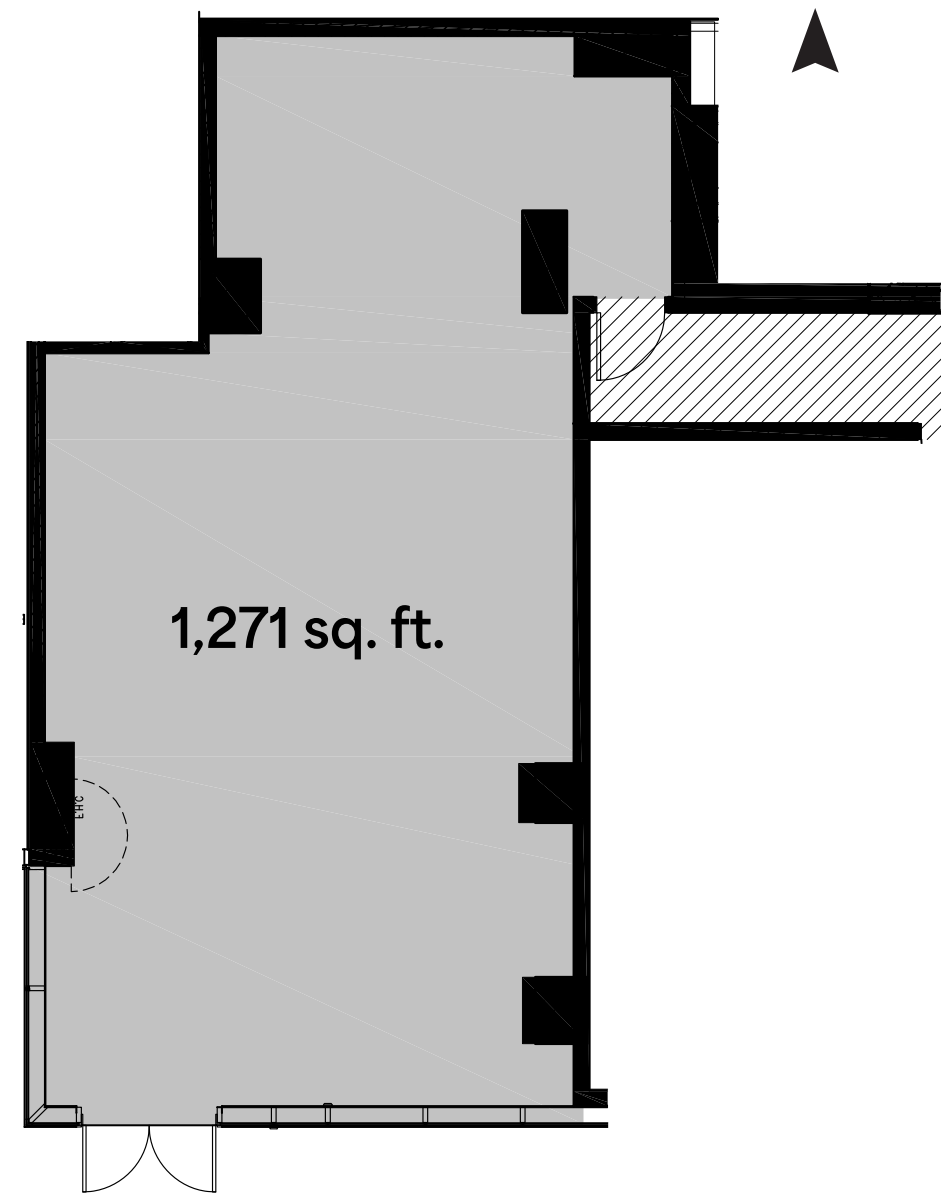
Size: 1,271 sq.ft.
Net Rent: \$55.00 per sq. ft.
Additional Rent: \$20.50 per sq. ft.
Availability: Immediately
Ceiling Heights: 18 ft.

- Co-tenants include Barry's, a world-renowned cross fit gym and Freshii
- Located on the ground level of the Picasso Condos, a 405-unit condominium building
- Features 18 ft. ceilings and excellent frontage onto Richmond St W
- Food uses welcome and space has easy access to loading and garbage

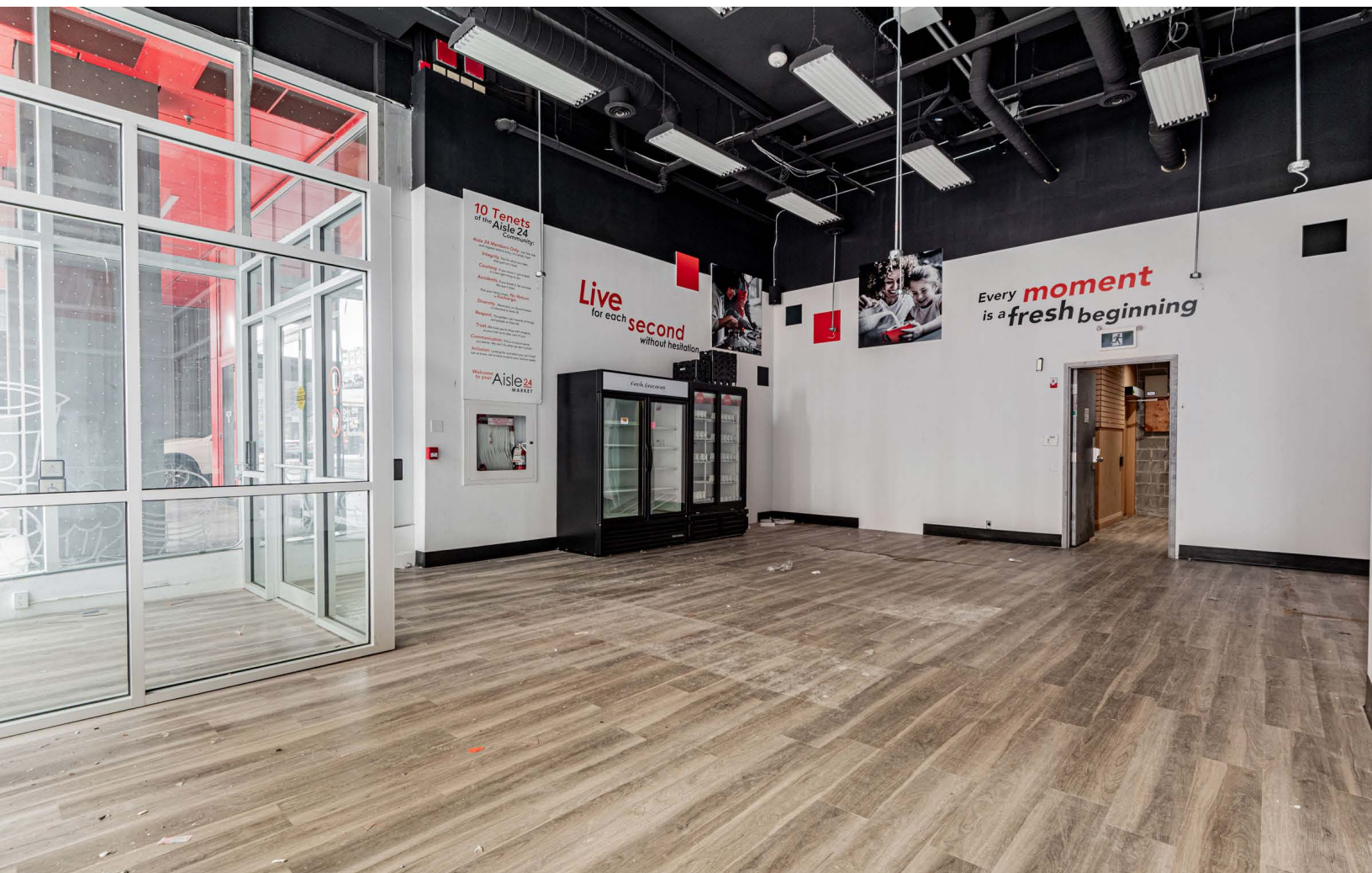


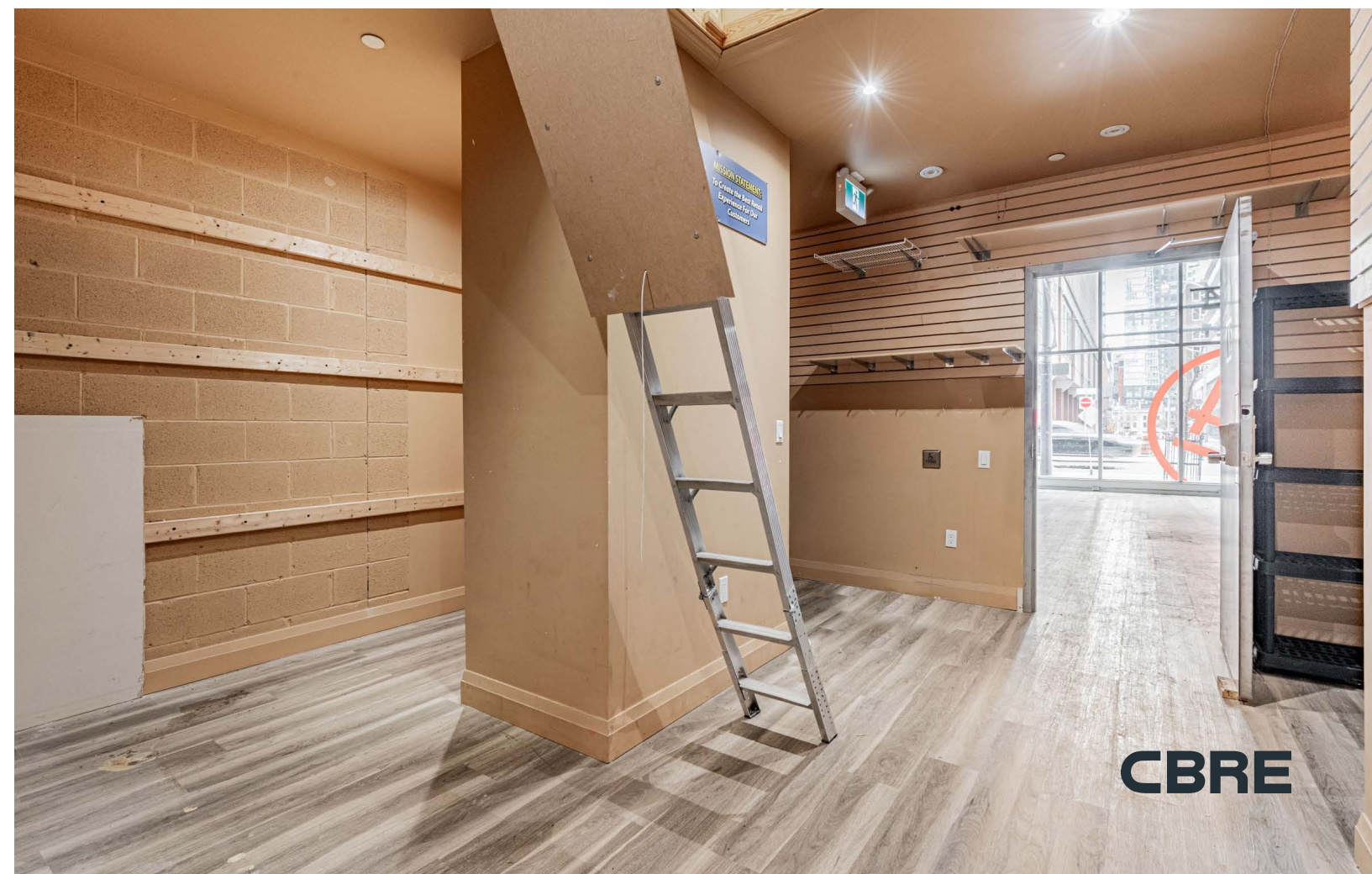
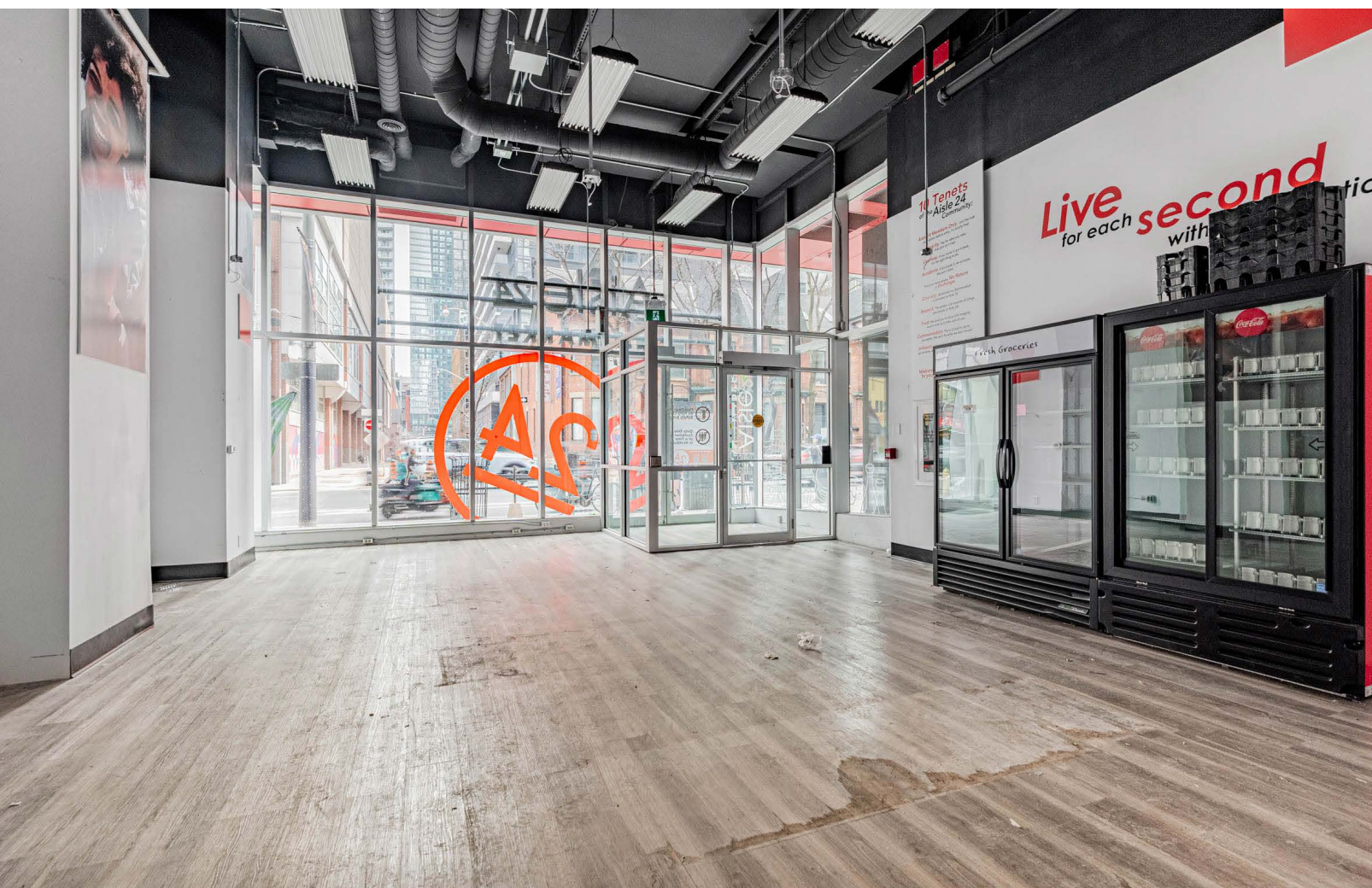


Floor Plan



RICHMOND ST W







The Location

310 Richmond Street West occupies a premier street-front location on Richmond Street in the heart of Toronto's Entertainment District. With Queen Street West to the north and King Street West to the south, the property is ideally positioned between two of the most dynamic retail nodes in the city.

310 Richmond is surrounded by countless amenities including unrivaled transit access, an assortment of retailers, restaurants, cafes, fitness concepts, world-class entertainment, hotels and nightlife. Neighbouring traffic generators include TIFF Bell Lightbox, Scotiabank Theatre, The Ballroom, Princess of Wales Theatre, Roy Thompson Hall, Ripely's Aquarium, CN Tower, AGO and the Rogers Centre.



Neighbouring Retailers & Traffic Drivers



Shopping

1. Michael's
2. Marshall's
3. MAC Cosmetics
4. Arc'teryx
5. Aldo
6. Brandy Melville
7. Aritzia
8. Icebreaker
9. MEC
10. Lululemon
11. Reigning Champ
12. Club Monaco
13. Adidas Originals
14. Kit and Ace
15. Shoppers Drug Mart
16. Fjallraven
17. Casper
18. Umbra
19. Miniso
20. Rexall
21. HomeSense
22. Shoppers Drug Mart
23. Dollarama
24. Bulk Barn

Health/Wellness

1. Barrys
2. Fit Factory
3. Totum Life Sciences
4. Fit Squad
5. Orangetheory Fitness
6. GoodLife Fitness
7. 161 Boxing Club

Food/Drink

1. Figo
2. La Carnita
3. Parlour
4. O&B Canteen
5. PAI
6. Michael's Steakhouse
7. Mott 32
8. Soho House
9. Byblos
10. Pigeon Cafe & Bar
11. Bar Hop
12. Luma
13. District Eatery
14. Coffee, Oysters, Champagne
15. General Assembly Pizza
16. FLOCK
17. Tutti Matti
18. Aloette
19. Paramount Kitchen
20. Rivoli
21. Peter Pan Bistro
22. Bar Hop Brewco
23. Planta
24. Chipotle
25. Starbucks
26. Alo
27. McDonald's
28. What a Bagel
29. Miss Likklemore's
30. Pink Sky Seafood
31. Patria
32. The Haam
33. Fresh & Wild
34. Wendy's
35. Tim Hortons
36. Belly Busters
37. Imperfect Fresh Eats
38. Abrielle

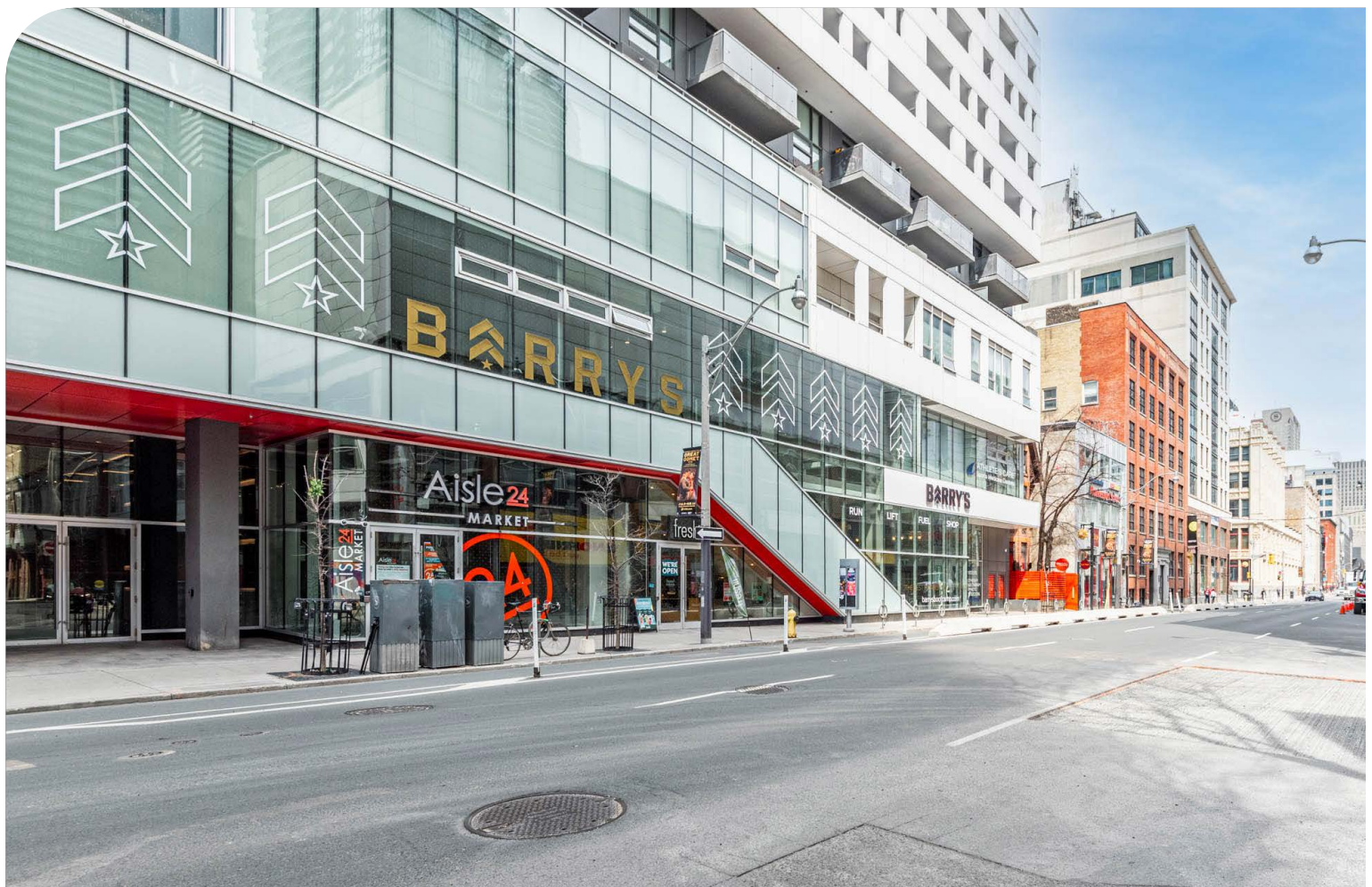
Entertainment

1. TIFF Bell Lightbox
2. Scotiabank Theatre
3. CBC Headquarters
4. Princess of Wales Theatre
5. Royal Alexandra Theatre
6. Roy Thompson Hall
7. Bell Media Headquarters
8. Four Seasons Centre
9. Ballroom Bowl
10. Ripley's Aquarium
11. CN Tower
12. Rogers Centre
13. AGO

Hotels

1. Shangri-La
2. Nobu Hotel
3. Revery Toronto
4. Hyatt Regency
5. Le Germain Hotel
6. Bishal Hotel
7. Soho Hotel
8. Residence Inn
9. The Ritz Carlton
10. Hilton
11. The Beverly Hotel
12. Sonder
13. Sutton Place Hotel

 **310 Richmond St W**



Contact

ARLIN MARKOWITZ*
Executive Vice President
416 815 2374
arlin.markowitz@cbre.com

ALEX EDMISON*
Senior Vice President
416 874 7266
alex.edmison@cbre.com

JACKSON TURNER**
Senior Vice President
416 815 2394
jackson.turner@cbre.com

TEDDY TAGGART*
Vice President
416 847 3254
teddy.taggart@cbre.com

EMILY EVERETT*
Sales Associate
647 943 4185
emily.everett@cbre.com

*Sales Representative **Broker

CBRE

This disclaimer shall apply to CBRE Limited, Real Estate Brokerage, and to all other divisions of the Corporation; to include all employees and independent contractors ("CBRE"). The information set out herein, including, without limitation, any projections, images, opinions, assumptions and estimates obtained from third parties (the "Information") has not been verified by CBRE, and CBRE does not represent, warrant or guarantee the accuracy, correctness and completeness of the Information. CBRE does not accept or assume any responsibility or liability, direct or consequential, for the Information or the recipient's reliance upon the Information. The recipient of the Information should take such steps as the recipient may deem necessary to verify the Information prior to placing any reliance upon the Information. The Information may change and any property described in the Information may be withdrawn from the market at any time without notice or obligation to the recipient from CBRE. CBRE and the CBRE logo are the service marks of CBRE Limited and/or its affiliated or related companies in other countries. All other marks displayed on this document are the property of their respective owners. All Rights Reserved.