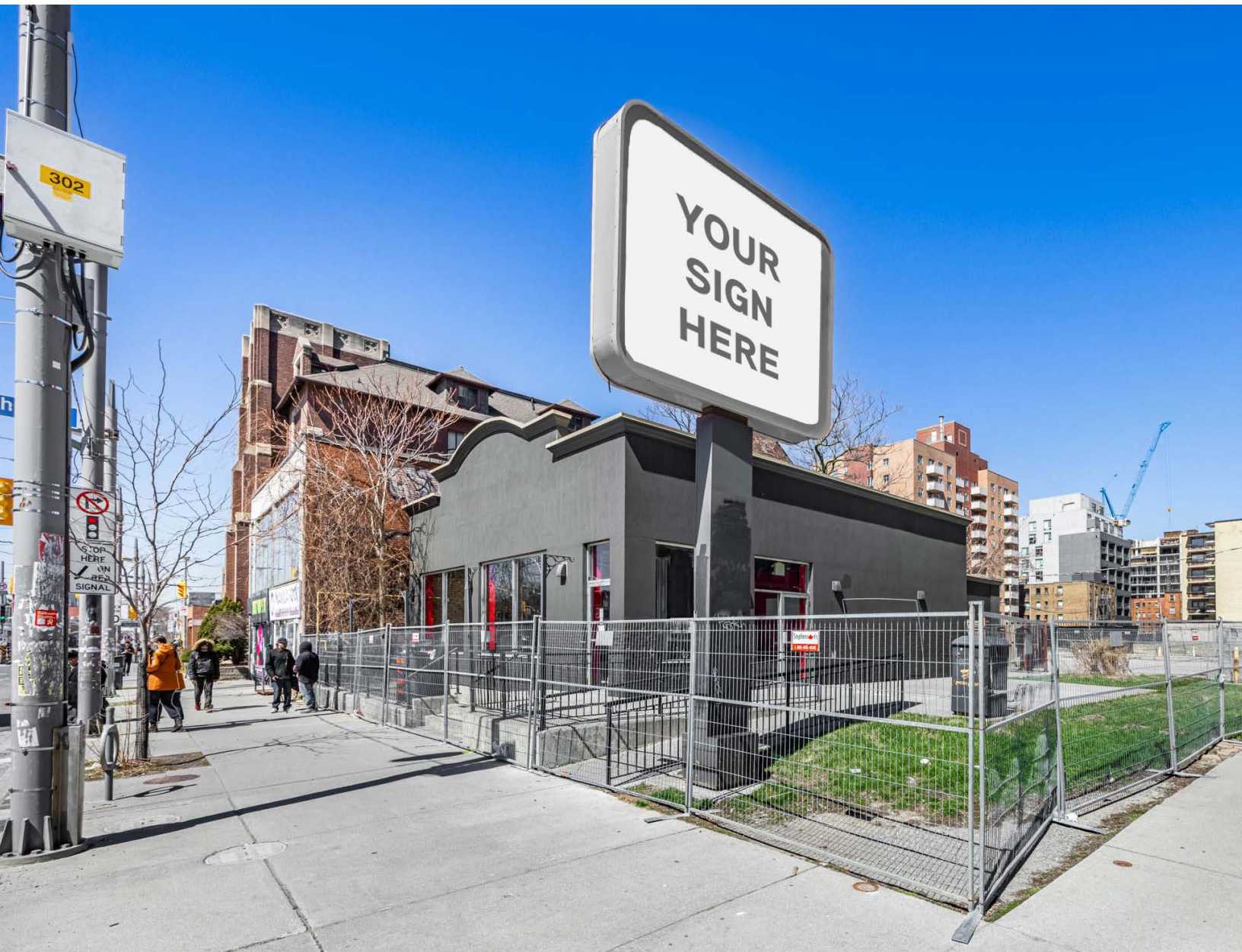


# 536 ST. CLAIR AVENUE *WEST*

High-Profile Retail for Lease at St. Clair & Bathurst



CBRE LIMITED, REAL ESTATE BROKERAGE | 145 KING STREET WEST | SUITE 1100 | TORONTO, ON M5H 1J8 | +1 416 362 2244 | [WWW.CBRE.CA](http://WWW.CBRE.CA)

**CBRE** urban retail team



# 536 ST. CLAIR AVENUE *WEST*

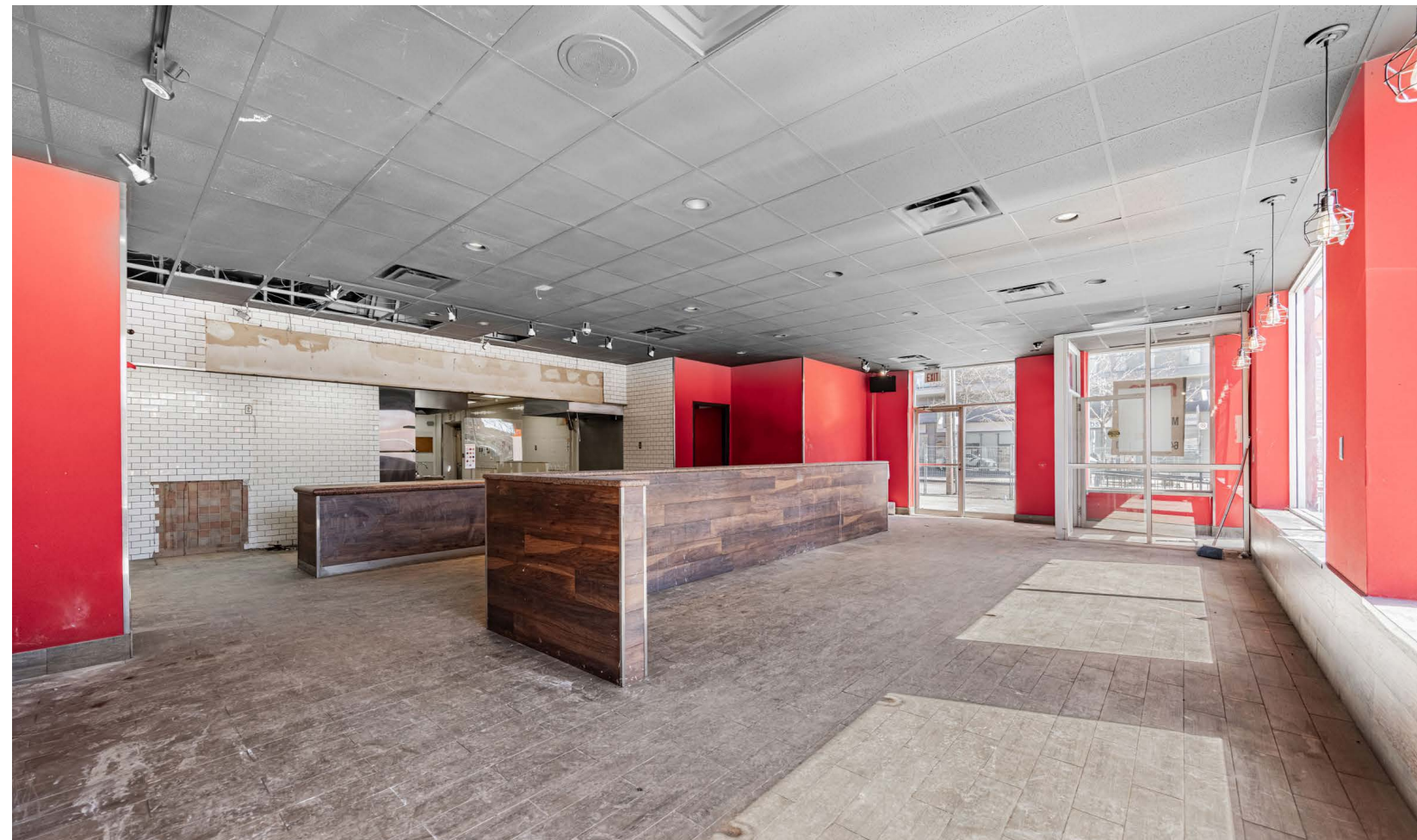
High-Profile Retail for Lease at St. Clair & Bathurst

SIZE: 3,019 sq. ft.

GROSS RENT: \$10,000 monthly

AVAILABLE: Immediately

- INCREDIBLE LOCATION ON ST. CLAIR JUST WEST OF BATHURST
- ABUNDANCE OF ONSITE PARKING
- EXCELLENT STREET PRESENCE AND SIGNAGE OPPORTUNITY
- BENEFITS FROM HIGH PEDESTRIAN AND VEHICULAR TRAFFIC
- FORMER PIZZA PIZZA
- NEIGHBOURING TENANTS INCLUDE SHOPPERS DRUG MART, SUBWAY, PIZZA PIZZA AND WINE RACK



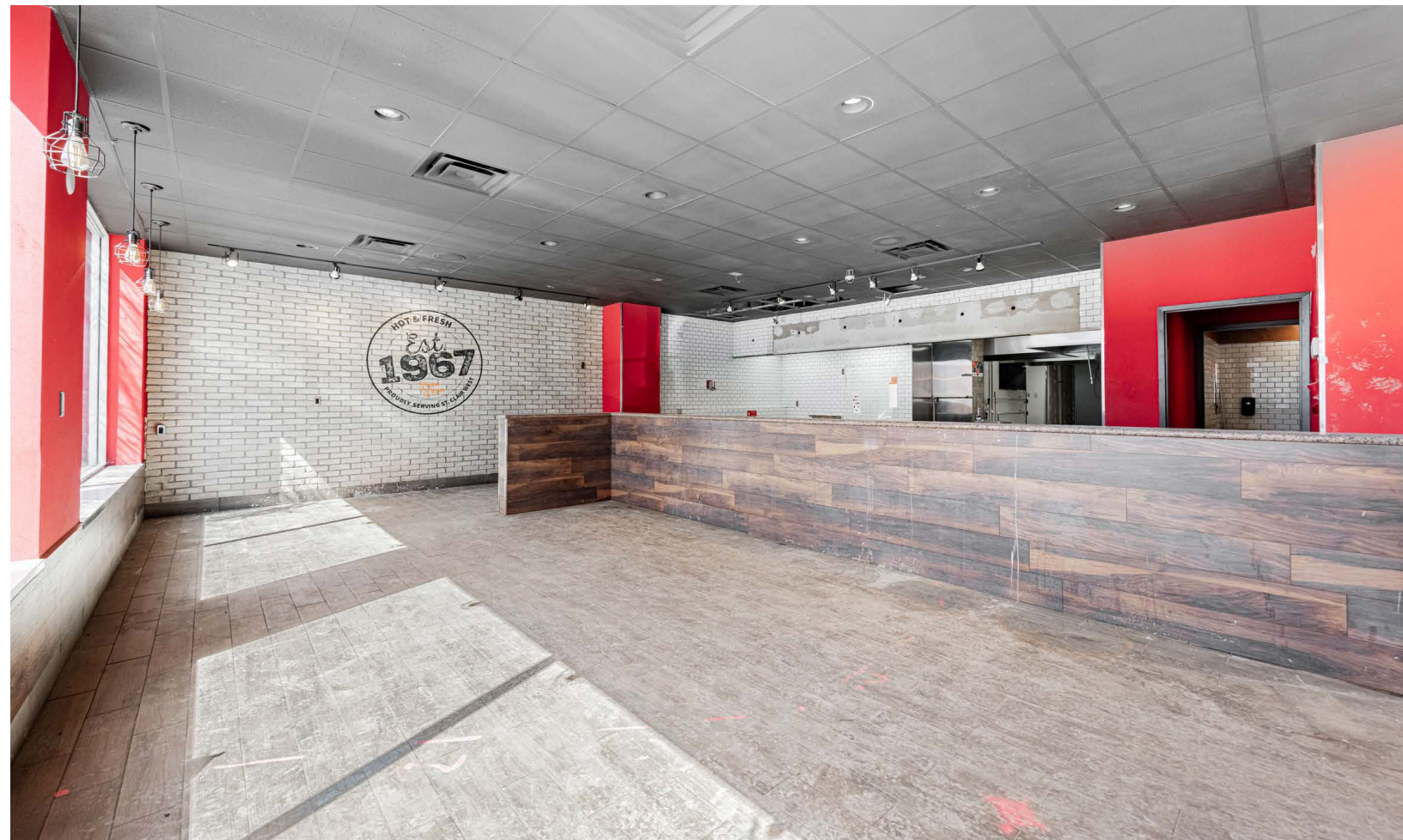




REAR PARKING

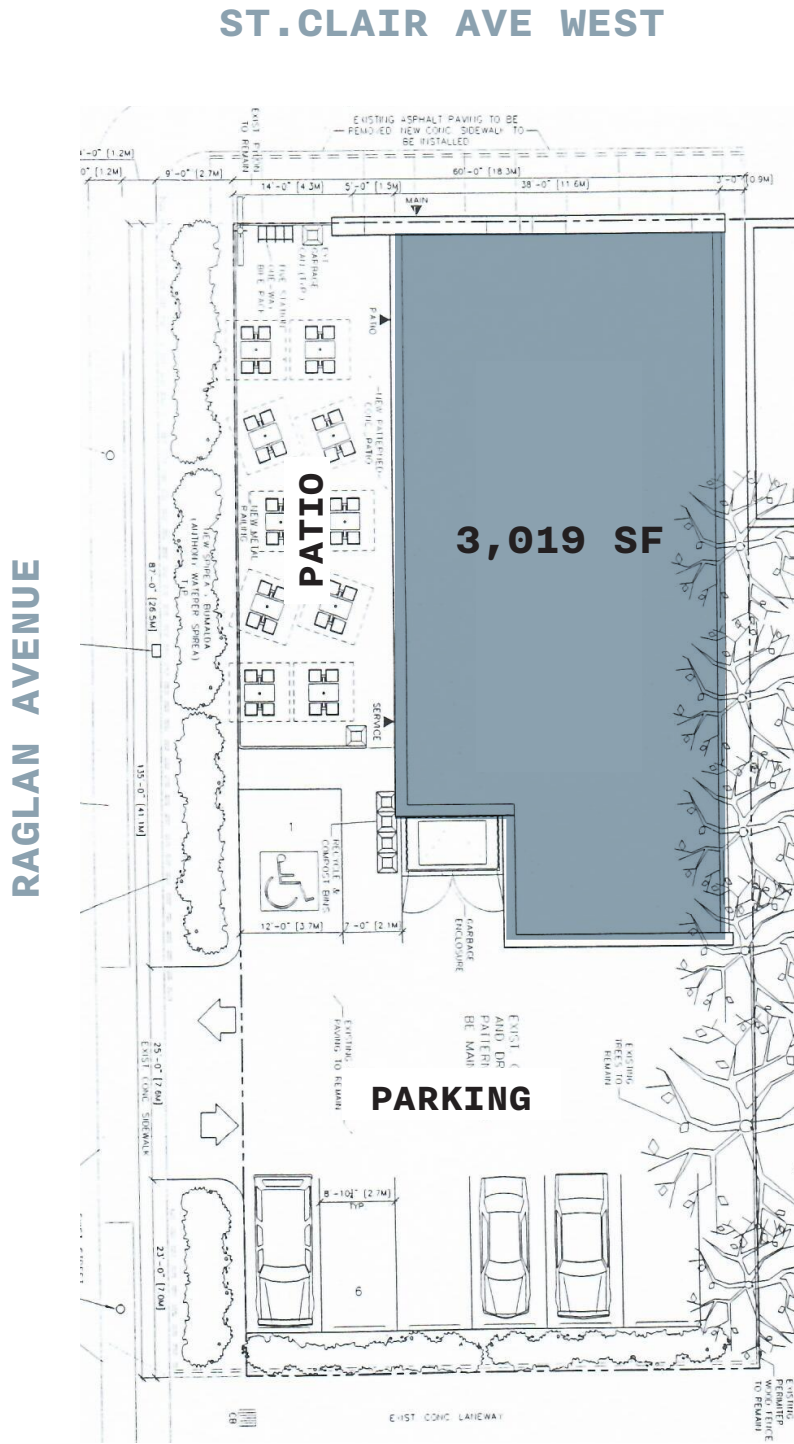


PATIO OPPORTUNITY

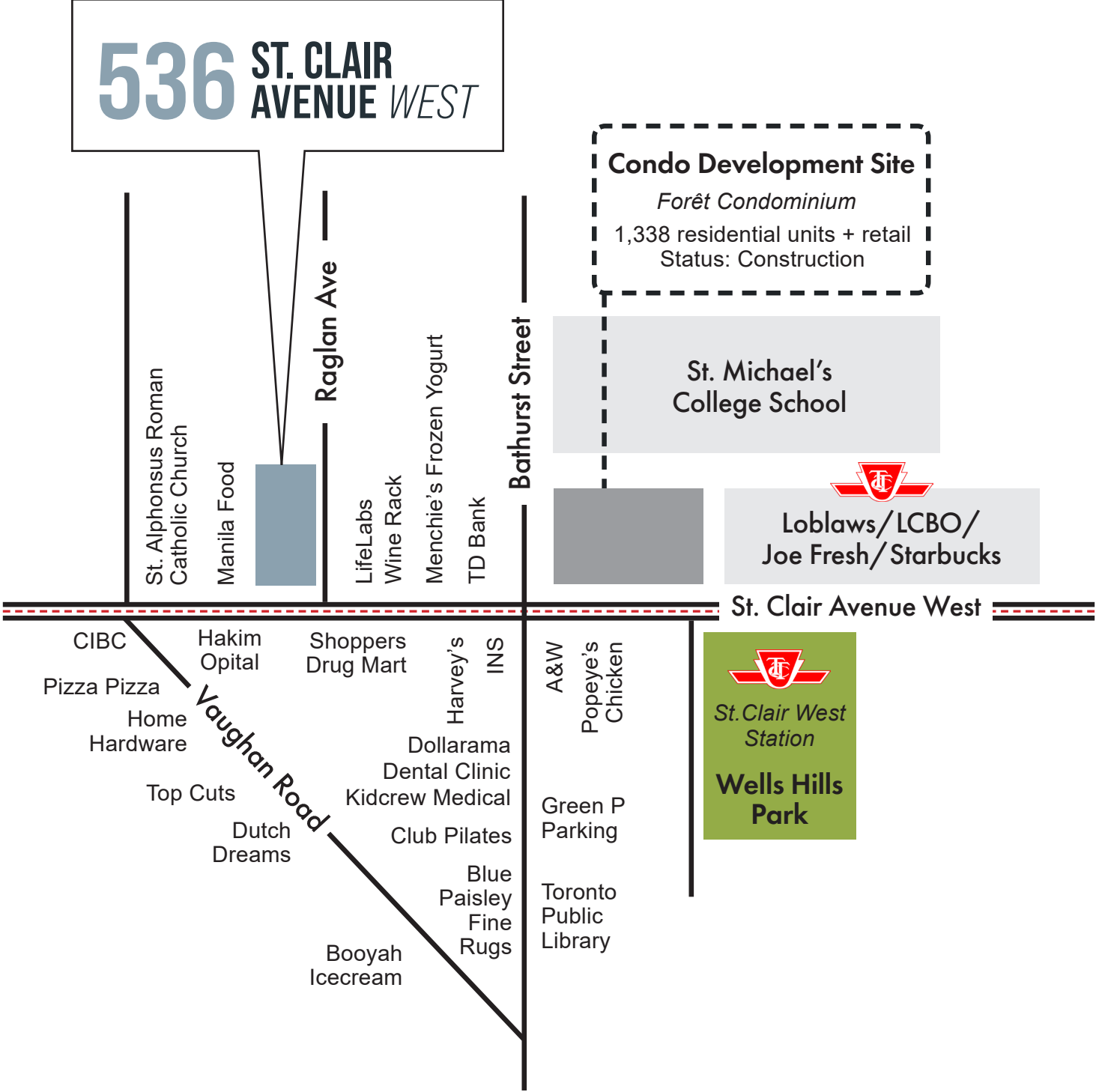




# FLOOR PLAN



# LOCATION MAP





# CONTACT

**ARLIN MARKOWITZ\***

Executive Vice President  
416 815 2374  
arlin.markowitz@cbre.com

**ALEX EDMISON\***

Senior Vice President  
416 874 7266  
alex.edmison@cbre.com

**JACKSON TURNER\*\***

Senior Vice President  
416 815 2394  
jackson.turner@cbre.com

**TEDDY TAGGART\***

Vice President  
416 847 3254  
teddy.taggart@cbre.com

**EMILY EVERETT\***

Sales Associate  
647 943 4185  
emily.everett@cbre.com

\*Sales Representative    \*\*Broker

# CBRE

This disclaimer shall apply to CBRE Limited, Real Estate Brokerage, and to all other divisions of the Corporation; to include all employees and independent contractors ("CBRE"). The information set out herein, including, without limitation, any projections, images, opinions, assumptions and estimates obtained from third parties (the "Information") has not been verified by CBRE, and CBRE does not represent, warrant or guarantee the accuracy, correctness and completeness of the Information. CBRE does not accept or assume any responsibility or liability, direct or consequential, for the Information or the recipient's reliance upon the Information. The recipient of the Information should take such steps as the recipient may deem necessary to verify the Information prior to placing any reliance upon the Information. The Information may change and any property described in the Information may be withdrawn from the market at any time without notice or obligation to the recipient from CBRE. CBRE and the CBRE logo are the service marks of CBRE Limited and/or its affiliated or related companies in other countries. All other marks displayed on this document are the property of their respective owners. All Rights Reserved.