

# 557 CHURCH

STREET // TORONTO

PRIME STREET FRONT RETAIL FOR LEASE



**CBRE** urban retail team

# 557CHURCH

STREET // TORONTO

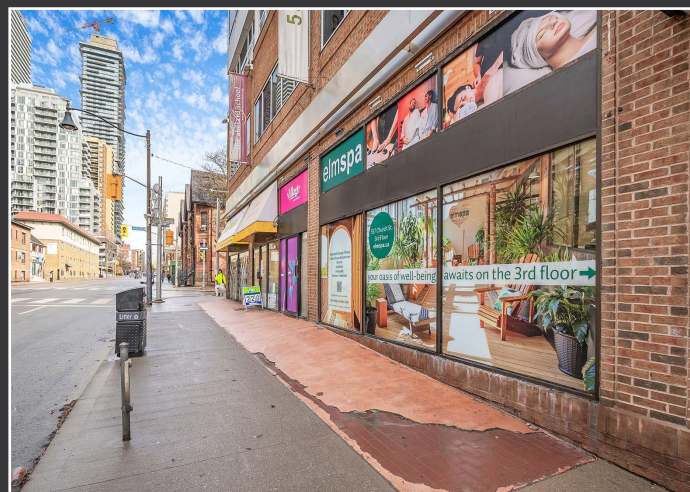
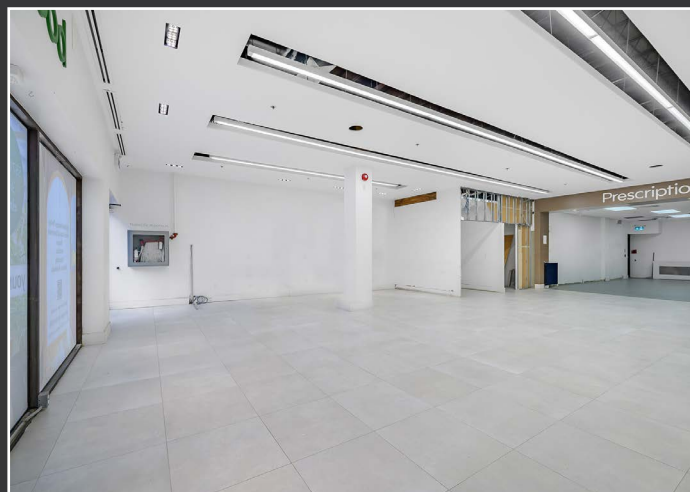
Size: 1,807 sq. ft.

Net Rent: \$38.50 per sq. ft.

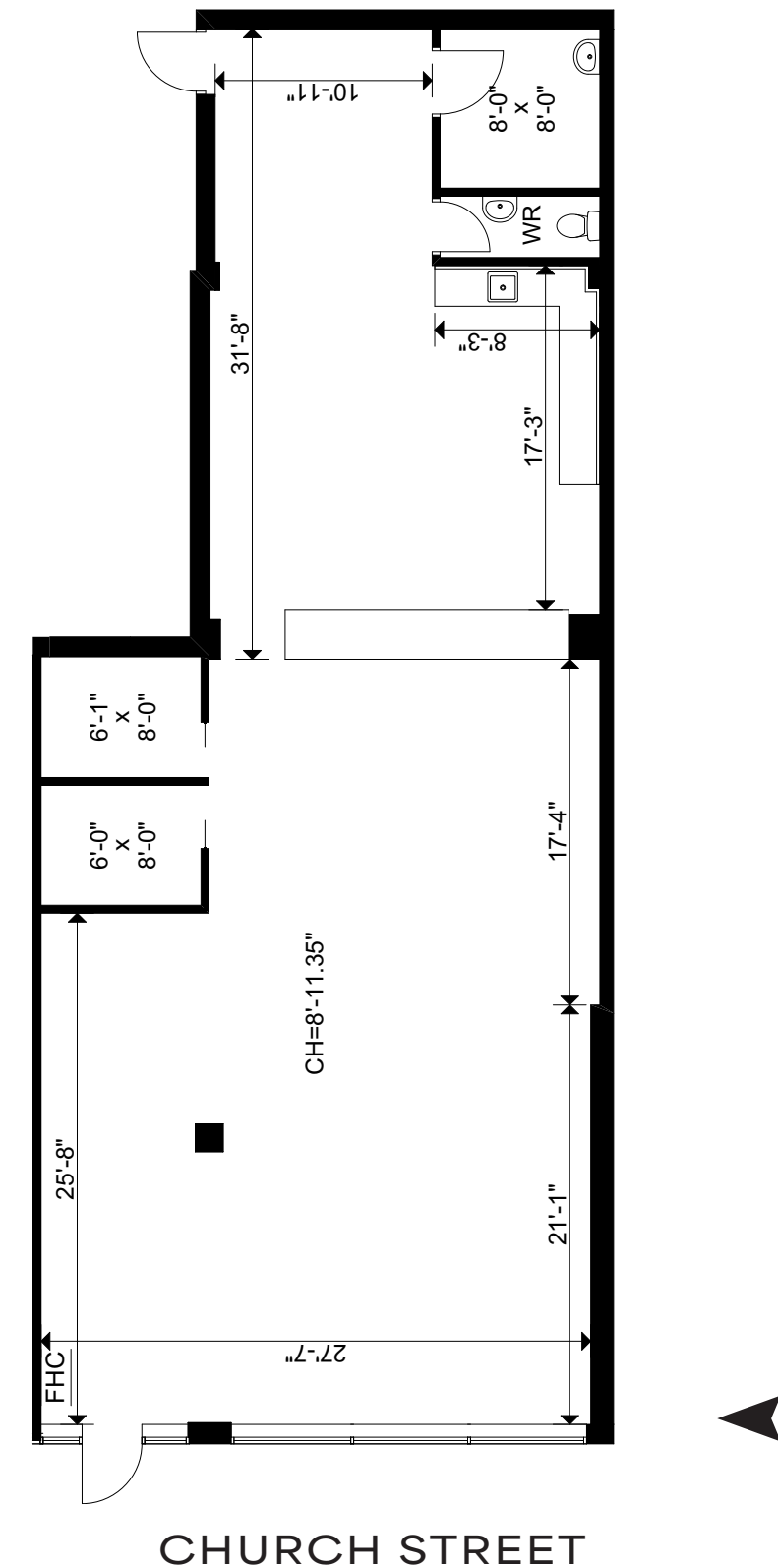
TMI: \$18.00 per sq. ft.

Available: Immediately

- Incredible location with ample frontage onto Church Street
- Steps to Wellesley subway station
- Nearby tenants include Hair of the Dog, Pho Ginger, Butter Chicken Roti and Sambucas on Church
- Suitable for a variety of retail uses



## Floor Plan







CBRE

# Streetscape







## Advisory Team

---

ARLIN MARKOWITZ\*  
Executive Vice President  
416 815 2374  
arlin.markowitz@cbre.com

ALEX EDMISON\*  
Senior Vice President  
416 874 7266  
alex.edmison@cbre.com

JACKSON TURNER\*\*  
Senior Vice President  
416 815 2394  
jackson.turner@cbre.com

TEDDY TAGGART\*  
Vice President  
416 847 3254  
teddy.taggart@cbre.com

EMILY EVERETT\*  
Sales Associate  
647 943 4185  
emily.everett@cbre.com

\*Sales Representative \*\*Broker

**CBRE**

This disclaimer shall apply to CBRE Limited, Real Estate Brokerage, and to all other divisions of the Corporation; to include all employees and independent contractors ("CBRE"). The information set out herein, including, without limitation, any projections, images, opinions, assumptions and estimates obtained from third parties (the "Information") has not been verified by CBRE, and CBRE does not represent, warrant or guarantee the accuracy, correctness and completeness of the Information. CBRE does not accept or assume any responsibility or liability, direct or consequential, for the Information or the recipient's reliance upon the Information. The recipient of the Information should take such steps as the recipient may deem necessary to verify the Information prior to placing any reliance upon the Information. The Information may change and any property described in the Information may be withdrawn from the market at any time without notice or obligation to the recipient from CBRE. CBRE and the CBRE logo are the service marks of CBRE Limited and/or its affiliated or related companies in other countries. All other marks displayed on this document are the property of their respective owners. All Rights Reserved.