

727 queen east

Prime Retail for Lease Located in the Heart of Toronto's Riverside District



CBRE | urban retail team

queen 727 east

Address: 727 Queen Street East, Toronto

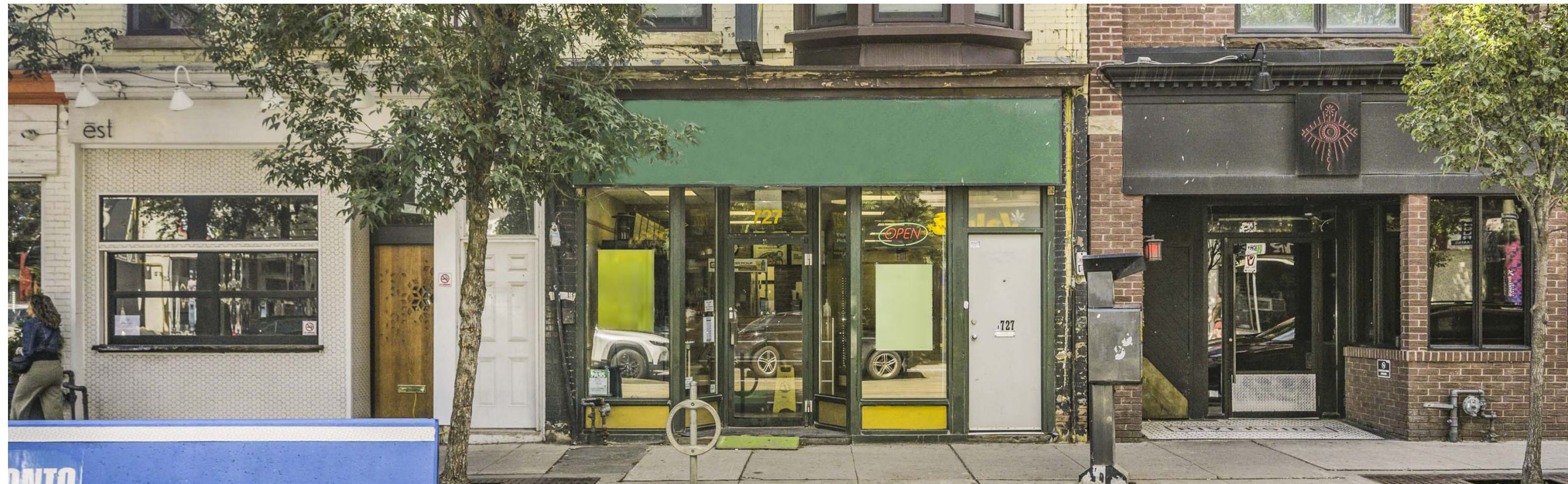
Size: ~940 sq. ft. + basement

Net Rent: \$4,650 / month

TMI: \$1,866.96 / month

Available: 30 days' notice

- Rare retail available in the heart of Toronto's popular Riverside District
- Includes 2-3 parking stalls located behind the property
- Five minute walk to the future Riverside-Leslieville subway station and located directly on the 501 Queen streetcar line
- Seconds from the DVP
- Neighbouring retailers include Duke's Refresher Bar, Broadview Hotel, LCBO, Dollarama, La Carnita, Anytime Fitness, COPS Donuts, The Opera House and many more!





the location | riverside district.

727 Queen Street East is located on a prime corner in the heart of Riverside District at Queen Street East and Broadview Avenue. Riverside District is a popular east-end neighbourhood spanning 10 blocks of Queen Street East from the Don Valley Parkway to De Grassi Street. The area is rich in history and boasts over 100 restaurants, bars, shops and attractions. Popular neighbourhood spots include The Broadview Hotel, The Opera House, Duke's Refresher Bar, Juicebox Vintage and many more!

Neighbouring Development Activity

1

2

3

4

5

6

Future
Riverside/Leslieville
Subway Station

seven twenty seven
queen east

1

641 Queen St East
Pre-Construction
of Units: 94

2

685 Queen St East
Under Construction
of Units: 26

3

21 Broadview
Pre-Construction
of Units: 340

4

356 Eastern Avenue
Pre-Construction
of Units: 140

5

Biblio Lofts
Under Construction
of Units: 28

6

Riverside Square
Recently Complete
of Units: 913

1,541 New Units

LCBO

Dollarama

Metroinx Community Office

Juicebox Vintage

Waxon Waxbar

Common Sort

The Comrade

Irish Design House

Clinique De Mode

Freedom Mobile

Stephan Caras Design Inc

Grant Street

Little Peeps

Butchers of Distinction

Burrito Queen

Fever's Vintage

Issaan Der Thai Kitchen

Oreya Studio

Pizzaiolo

Riverside Market

Liberty Shawarma

Pizza Nova

Broadview Avenue

Queen Garden Cafe

Sauter Street

Toronto Public Library

Biblio Lofts Condo

BlessedLove Caribbean Market

Rans Closet

Sotherby's Canada

Hair Code Salon

Georges Barber Shop

Slayer Burger

Lewis Street

The Opera House

Dresden Optimist

Wine Rack

Est Restaurant

Corby's

Indian Spice Room

Lone & Co.

Dukes Refresher Bar

seven twenty seven
queen east

Broadview Hotel

Eastbound Brewing Company

Prohibition Social House

Riverside Burgers

Aura

Ali Baba's

Hamilton Street

Pizza Pizza

White Lily Diner

Oma Chiropractic

Munro Street

The Edwin

Carroll Street

Dark Horse Espresso Bar

Genesis Downtown

Guff Furniture

Davies Avenue

Don Valley Parkway

Don River

Queen Street East

Condo Development

Country Style

Starbank

Hermies

Chick Wings

La Femme Strong

Kalamkaar Furniture

Album Hair

Black Bird Baking Co.

Magenta Health

Il Ponte Cucina Italiana

contact.

ARLIN MARKOWITZ*
Executive Vice President
416 815 2374
arlin.markowitz@cbre.com

ALEX EDMISON*
Senior Vice President
416 874 7266
alex.edmison@cbre.com

JACKSON TURNER**
Senior Vice President
416 815 2394
jackson.turner@cbre.com

EMILY EVERETT*
Sales Associate
647 943 4185
emily.everett@cbre.com

CBRE urban retail team

This disclaimer shall apply to CBRE Limited, Real Estate Brokerage, and to all other divisions of the Corporation; to include all employees and independent contractors ("CBRE"). The information set out herein, including, without limitation, any projections, images, opinions, assumptions and estimates obtained from third parties (the "Information") has not been verified by CBRE, and CBRE does not represent, warrant or guarantee the accuracy, correctness and completeness of the Information. CBRE does not accept or assume any responsibility or liability, direct or consequential, for the Information or the recipient's reliance upon the Information. The recipient of the Information should take such steps as the recipient may deem necessary to verify the Information prior to placing any reliance upon the Information. The Information may change and any property described in the Information may be withdrawn from the market at any time without notice or obligation to the recipient from CBRE. CBRE and the CBRE logo are the service marks of CBRE Limited and/or its affiliated or related companies in other countries. All other marks displayed on this document are the property of their respective owners. All Rights Reserved.