

CBRE



# AQUALUNA

WATERFRONT RETAIL FOR SALE | BAYSIDE TORONTO



# AQUALUNA

WATERFRONT RETAIL FOR SALE

966 sf  
UNIT 1

1,965 sf  
UNIT 2

1,842 sf  
UNIT 3

2,616 sf  
UNIT 4

1,956 sf  
UNIT 5

2,612 sf  
UNIT 6

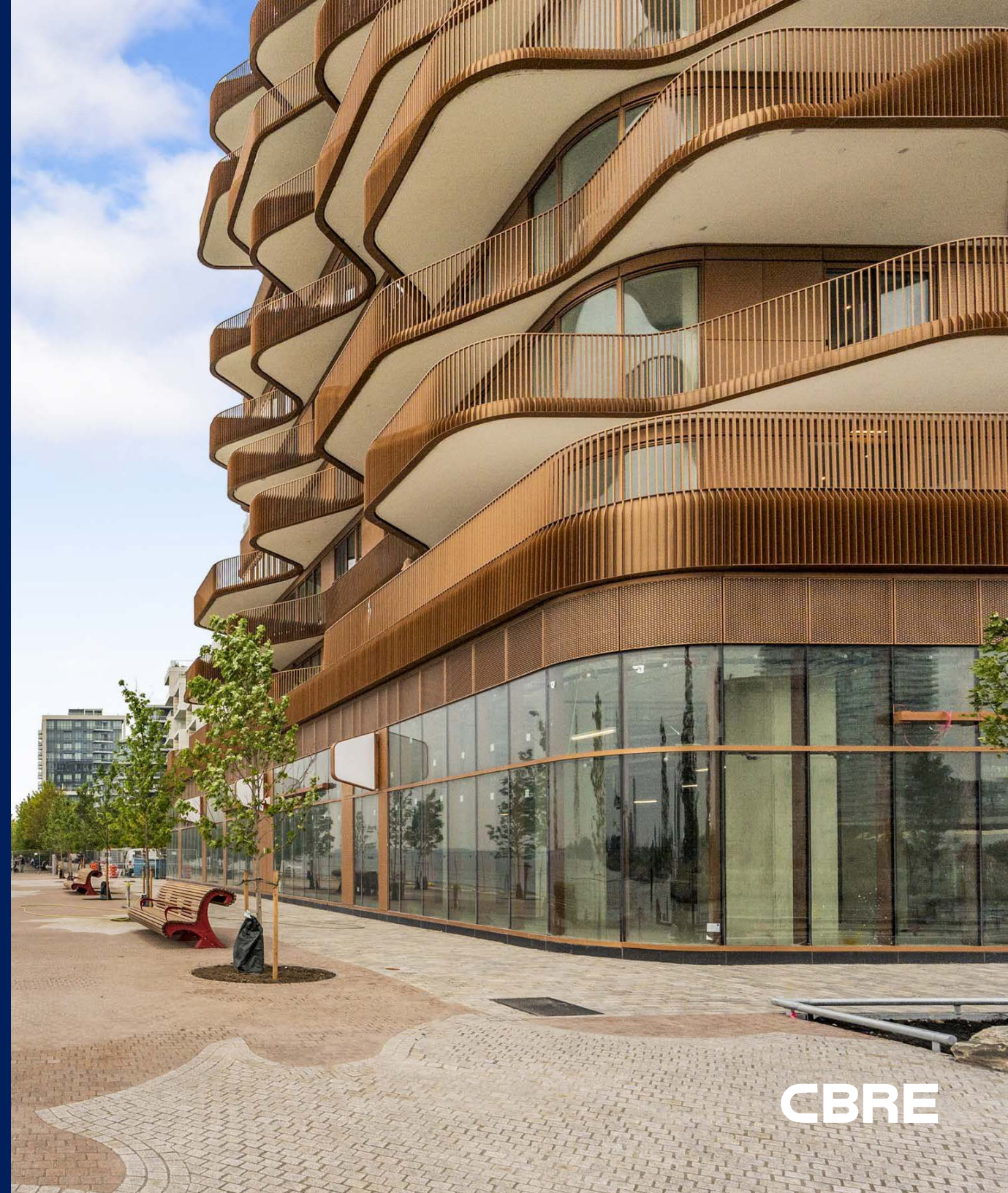
1,774 sf  
UNIT 7

1,445 sf  
UNIT 8

**Total Size:** 15,176 sq. ft.

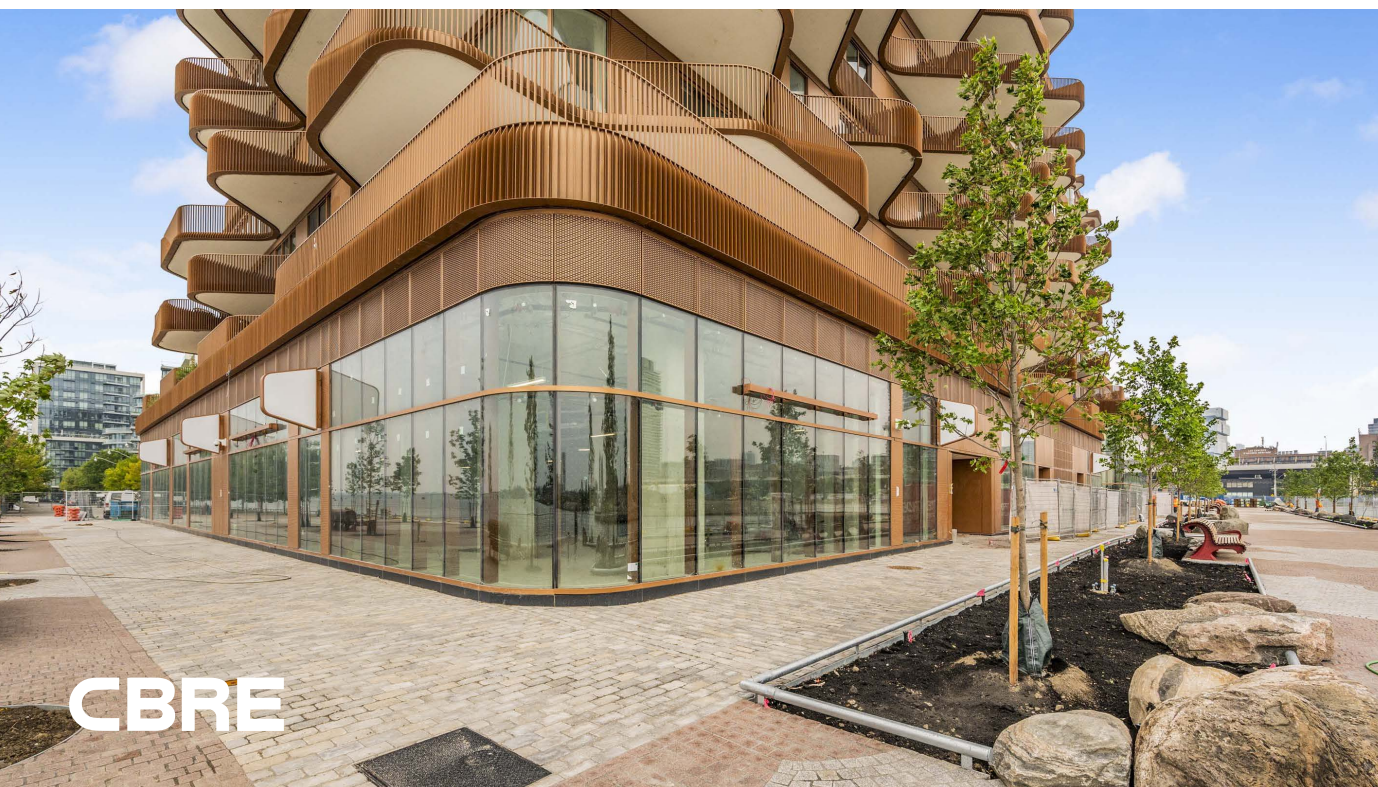
**Asking Price:** \$6,300,000

- Prime waterfront retail located on the ground level of Aqualuna, a brand-new 225-unit condominium building by Tridel and Hines
- Commercial parking available on the P1 Level
- Space is part of a dynamic mixed-use community anchored by a 20,000 sq. ft. grocery store and numerous other retail and restaurant amenities
- Building abuts the waterfront with fantastic Lake Ontario views



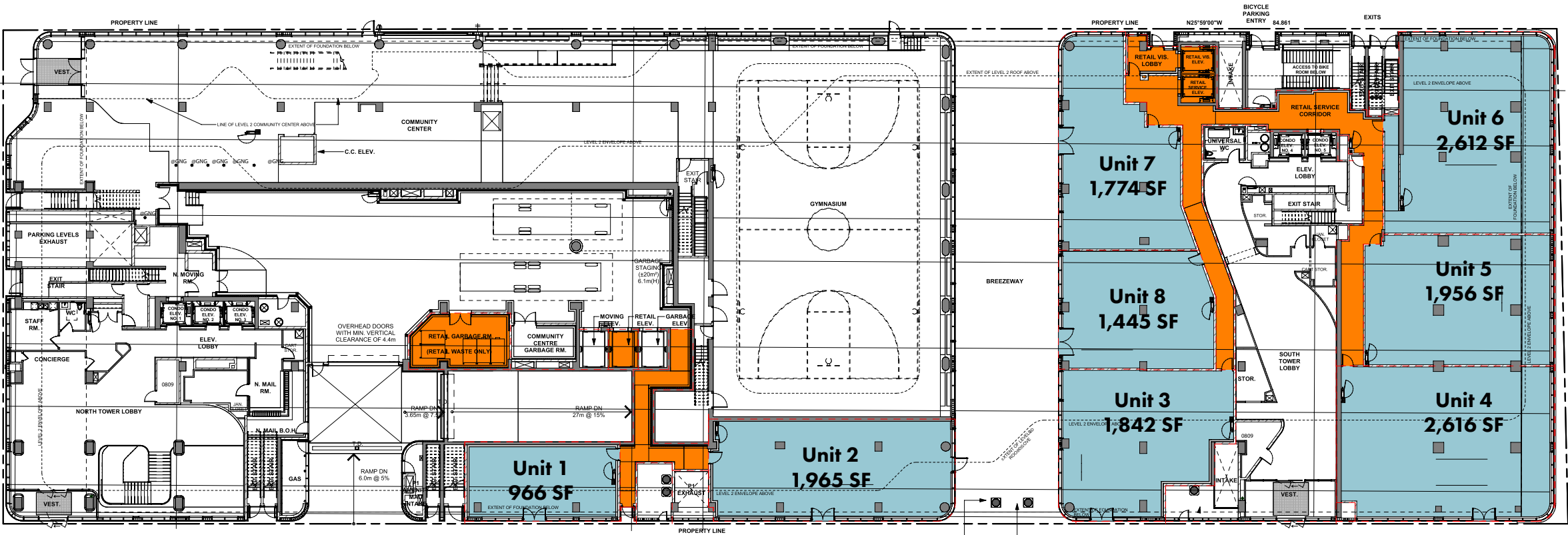
CBRE







AQUALUNA FLOOR PLAN | 15,176 SF



WATER'S EDGE  
PROMENADE

MERCHANTS' WHARF





# BAYSIDE TORONTO

**A mixed-use waterfront community part of Waterfront Toronto's 2,000-acre revitalization plan, the largest such initiative currently underway in the world.**

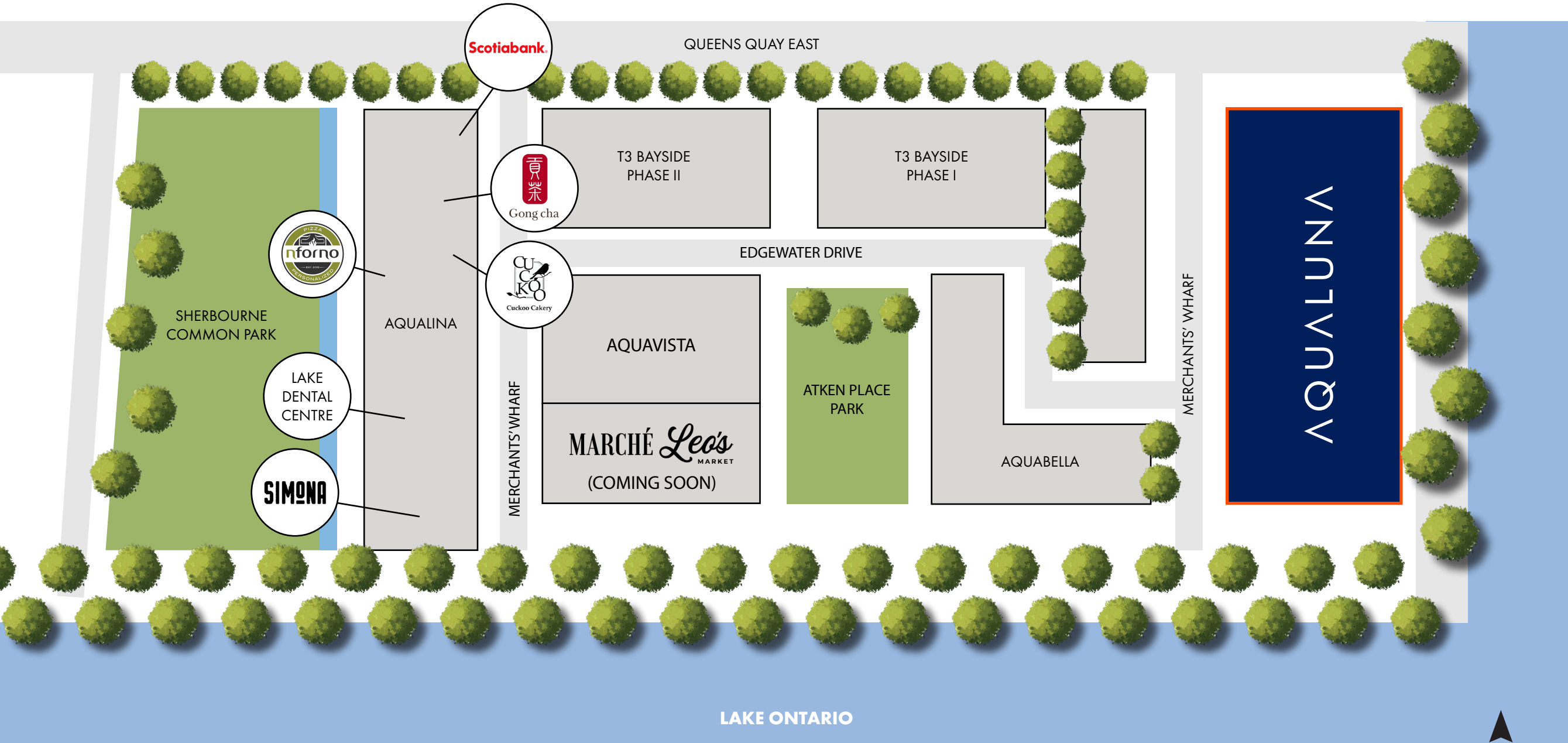
Situated in the heart of the emerging East Bayfront waterfront district and only five minutes from Union Station, Bayside Toronto is located on a 13-acre site along Toronto's waterfront between Lower Sherbourne Street to the west and Parliament Street to the east.

When complete Bayside Toronto will contain more than two million square feet of residential, office, retail and cultural uses resulting in diverse live-work-play neighborhood. Two mass timber office buildings, T3 Bayside (500,000 SF + of innovative office space), will provide daytime activity to the Bayside community. All four planned condominium developments have now been completed – Aqualina (362 units), Aquavista (227 units) and Aquabella (174 units) and Aqualuna (225 units).





BAYSIDE TORONTO COMMUNITY





BAYSIDE TORONTO COMMUNITY






AREA RESIDENTIAL OVERVIEW



 **8,492 Units**  
EXISTING/INCOMING  
RESIDENTIAL UNITS

Currently Under Construction		
#	Building Name/Address	# of Units
2	Pinnacle Lakeside (Phase I)	1,147
3	Quay House	463
Total Units:		1,610

Pre-Construction		
#	Building Name/Address	# of Units
1	Bayside Block R6	325
2	307 Lake Shore East	430
3	Quayside: The Overstory	816
4	Quayside: Western Curve	894
5	Quayside: Timber House	463
6	180 Queens Quay East	607
7	Pinnacle Lakeside (Phase II)	844
Total Units:		4,379

Existing Residential Buildings		
#	Building Name/Address	# of Units
1	Aquavista	227
2	Aqualina	362
3	Monde	552
4	Daniels Waterfront	963
5	Aquabella	174
	Aqualuna	225
Total Units:		2,503



# Contact

ARLIN MARKOWITZ\*  
Executive Vice President  
416 815 2374  
arlin.markowitz@cbre.com

ALEX EDMISON\*  
Senior Vice President  
416 874 7266  
alex.edmison@cbre.com

JACKSON TURNER\*\*  
Senior Vice President  
416 815 2394  
jackson.turner@cbre.com

TEDDY TAGGART\*  
Vice President  
416 847 3254  
teddy.taggart@cbre.com

EMILY EVERETT\*  
Sales Associate  
647 943 4185  
emily.everett@cbre.com

\* Sales Representative    \*\* Broker



This disclaimer shall apply to CBRE Limited, Real Estate Brokerage, and to all other divisions of the Corporation; to include all employees and independent contractors ("CBRE"). The information set out herein, including, without limitation, any projections, images, opinions, assumptions and estimates obtained from third parties (the "Information") has not been verified by CBRE, and CBRE does not represent, warrant or guarantee the accuracy, correctness and completeness of the Information. CBRE does not accept or assume any responsibility or liability, direct or consequential, for the Information or the recipient's reliance upon the Information. The recipient of the Information should take such steps as the recipient may deem necessary to verify the Information prior to placing any reliance upon the Information. The Information may change and any property described in the Information may be withdrawn from the market at any time without notice or obligation to the recipient from CBRE. CBRE and the CBRE logo are the service marks of CBRE Limited and/or its affiliated or related companies in other countries. All other marks displayed on this document are the property of their respective owners. All Rights Reserved.