

338 Adelaide Street West

High Profile Corner Retail for Lease at Peter & Adelaide
in the Heart of Toronto's Entertainment District



CBRE

338 Adelaide Street West

Property Details

Address: 338 Adelaide Street West, Toronto

Size: 1,494 sq. ft.

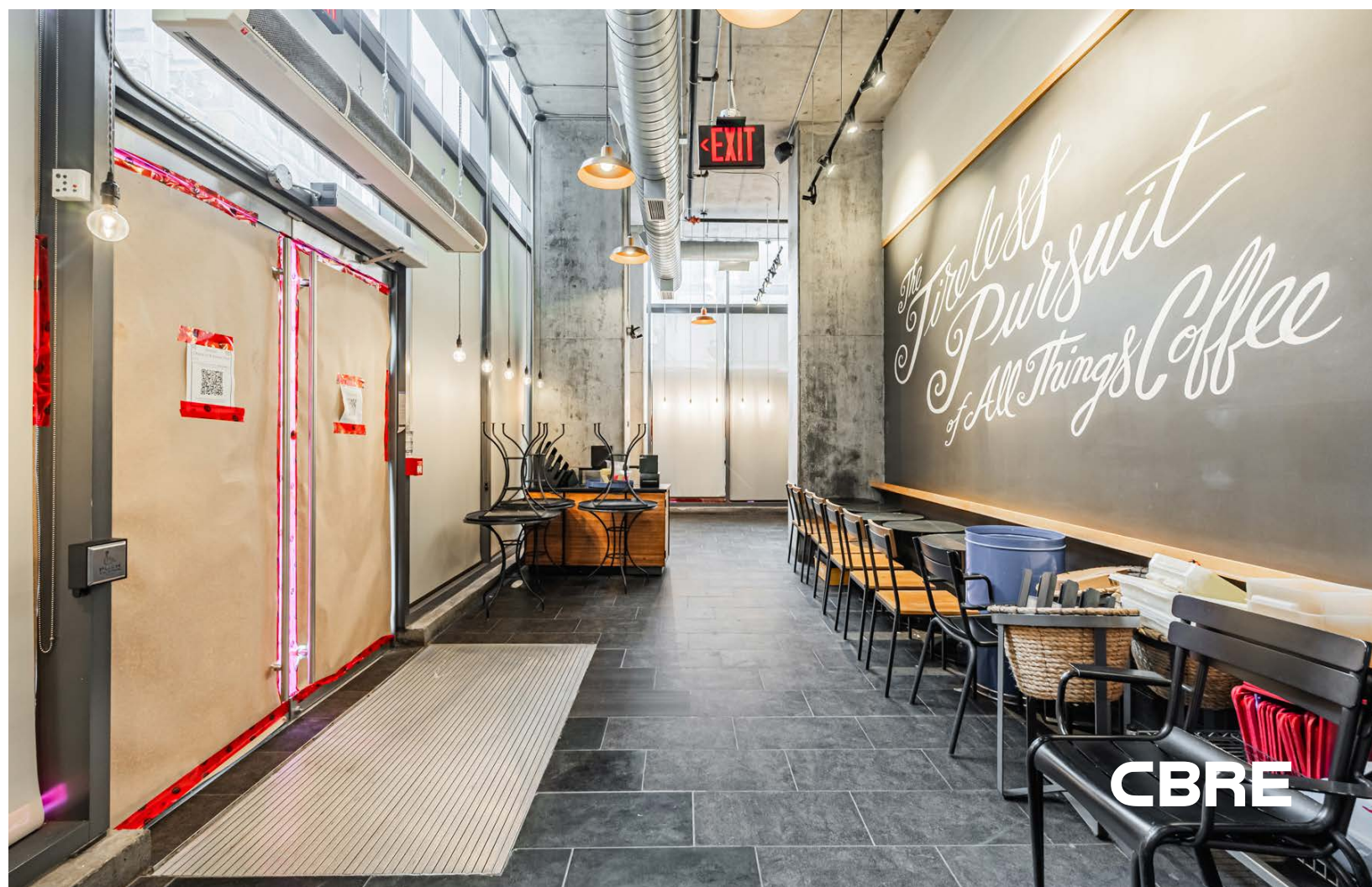
Net Rent: \$80.00 per sq. ft.

TMI: \$26.20 per sq. ft.

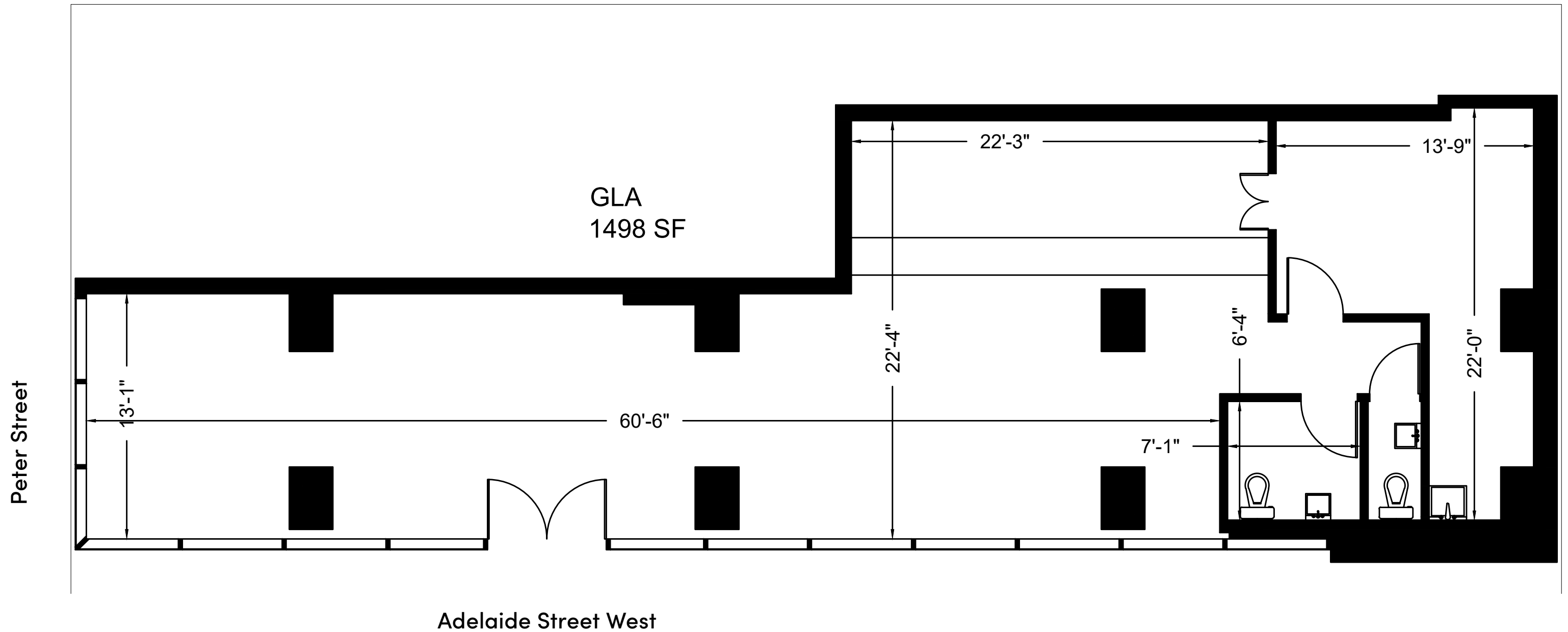
Available: February 1, 2026

- Incredible downtown location in the heart of The Entertainment District at the busy intersection of Adelaide Street West and Peter Street
- Patio option available
- Previously a Starbucks for over 11 years
- Extra storage space available at lower level for an extra charge
- Benefits from its proximity to King West, Queen West and The Financial Core
- Close to Osgoode and St. Andrew subway stations as well as an entrance to the PATH network
- Neighbouring retailers and traffic drivers include: Bestco, The Rogers Centre, TIFF Bell Lightbox, Princess of Wales Theatre, Bisha Hotel, Scotiabank Theatre, Hyatt Regency and many more





Floor Plan | 1,494 SF





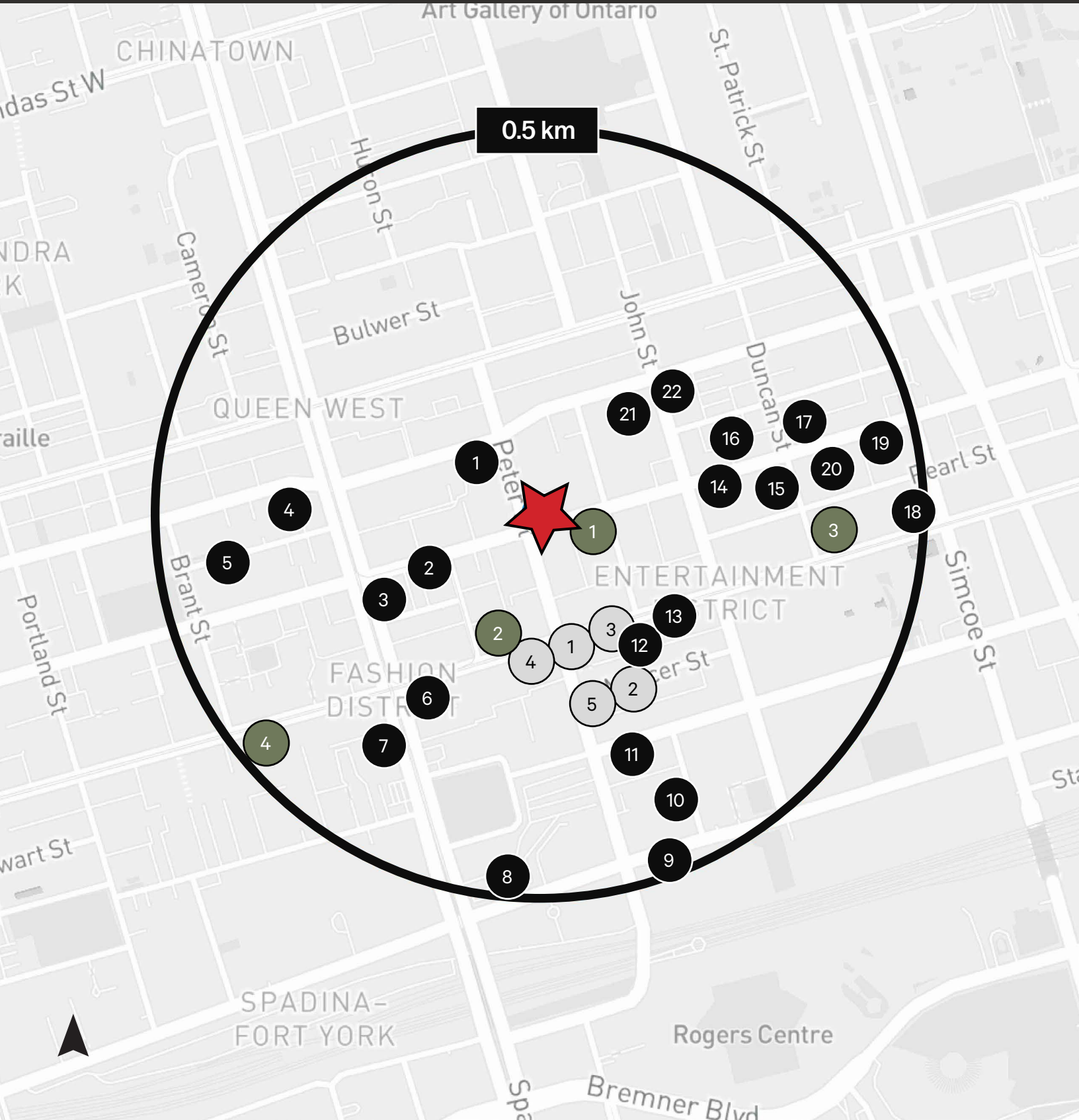
The Location

338 Adelaide Street West occupies a premier location at the corner of Adelaide & Peter in the rapidly growing node of Downtown West in Toronto's urban core. It is located between King West and Queen West, two of the main retail streets in Toronto, known for the city's largest concentration of shops, restaurants, theatres and nightlife.

The site is surrounded by some of Toronto's top attractions, hotels and points-of-interest including Tiff Bell Lightbox, Bisha Hotel, Princess of Wales Theatre, NOBU Restaurant and Residences, Rogers Centre, CN Tower, Ripley's Aquarium as well as endless restaurants and bars.

Neighbouring Developments

Incoming Units: 17,172 + (Within 0.5km)



Notable Active Developments

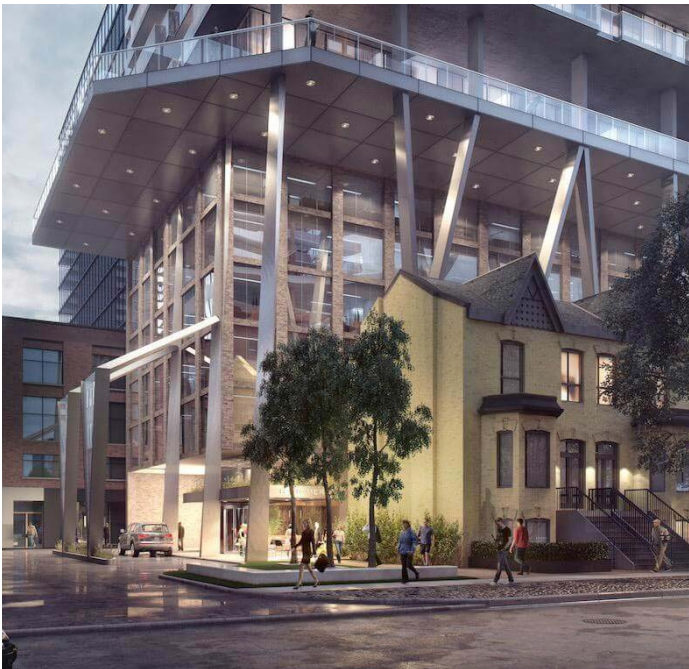
#	Condo	Units
1	Theatre District Condos	1,005
2	400 King West	612
3	Forma	2,034
4	KING Toronto	440
	Total	4,091

Notable Development Applications

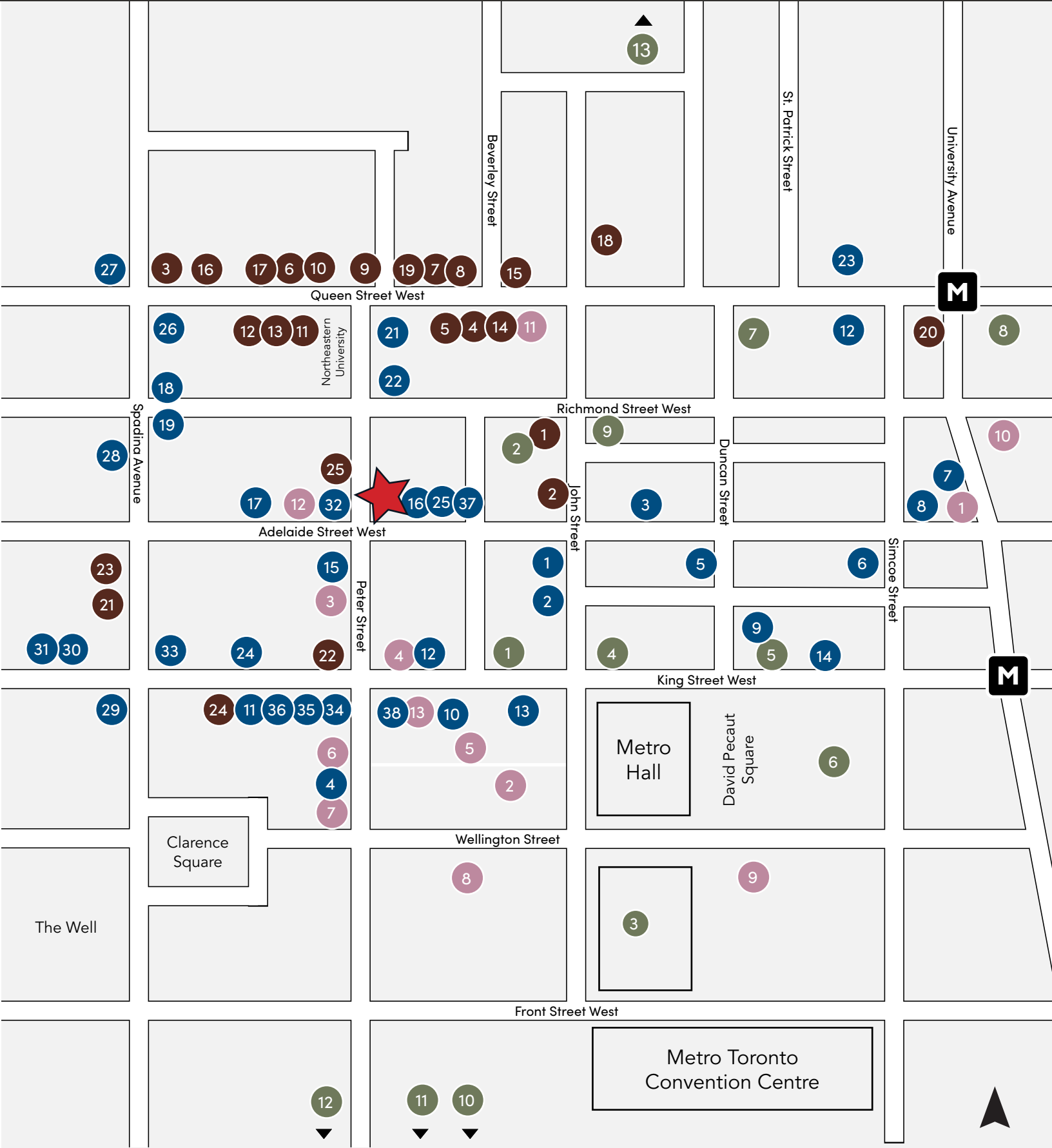
#	Condo	Units
1	122 Peter	386
2	Spadina Adelaide Square	557
3	101 Spadina Avenue	397
4	8 Camden	200
5	Camden House	237
6	Four Eleven King Condos	435
7	46 Spadina Avenue	550
8	400 Front Street	2,171
9	Union Park	732
10	310 Front West	1,782
11	255 Wellington St W	300
12	Bungalow on Mercer	12
13	305-319 King West	403
14	Natasha Residences	432
15	14 Duncan	369
16	260 Adelaide West	813
17	Freed Hotel & Residences	493
18	212 King Street West	569
19	100 Simcoe	526
20	150 Pearl	482
21	RioCan Hall	693
22	241 Richmond West	479
	Total	13,081

Notable Recently Completed Condos

#	Condo	Units
1	King Blue	911
2	Nobu Residences	656
3	Maverick	310
4	357 King West	340
5	55 Mercer	543
	Total	2,760



Neighbouring Retailers & Traffic Drivers



Shopping

1. Michael's
2. Marshall's
3. MAC Cosmetics
4. Arc'teryx
5. Aldo
6. Brandy Melville
7. Aritzia
8. Icebreaker
9. MEC
10. Lululemon
11. Reigning Champ
12. Club Monaco
13. Adidas Originals
14. Kit and Ace
15. Shoppers Drug Mart
16. Fjallraven
17. Casper
18. Umbra
19. Knix
20. Rexall
21. HomeSense
22. Shoppers Drug Mart
23. Dollarama
24. Bulk Barn
25. Bestco.

Food/Drink

1. Figo
2. La Carnita
3. Parlour
4. KOST
5. Pai
6. Michael's Steakhouse
7. Mott 32
8. Soho House
9. Byblos
10. Pigeon Cafe & Bar
11. Bar Hop
12. Starbucks
13. District Eatery
14. Coffee, Oysters, Champagne
15. General Assembly Pizza
16. FLOCK
17. Tutti Matti
18. Aloette
19. Alo
20. Rivoli
21. Peter Pan Bistro
22. Bar Hop Brewco
23. Planta
24. Chipotle
25. Kiin Thai
26. Alo
27. McDonalds
28. What A Bagel
29. Miss Liklemore's
30. Pink Sky Seafood
31. Patria
32. The Haam
33. Fresh & Wild
34. Wendy's
35. Tim Hortons
36. Belly Busters
37. Imperfect Fresh Eats
38. Abrielle

Entertainment

1. TIFF Lightbox
2. Scotiabank Theatre
3. CBC Headquarters
4. Princess of Wales Theatre
5. Royal Alexander Theatre
6. Roy Thompson Hall
7. Bell Media Headquarters
8. Four Seasons Centre
9. Ballroom Bowl
10. Ripley's Aquarium
11. CN Tower
12. Rogers Centre
13. AGO

Hotels

1. Shangri-La
2. Nobu Hotel
3. Revery Toronto
4. Hyatt Regency
5. Le Germain Hotel
6. Bisha Hotel
7. Soho Hotel
8. Residence Inn
9. The Ritz Carlton
10. Hilton
11. The Beverly Hotel
12. Sonder
13. Sutton Place Hotel

Contact

ARLIN MARKOWITZ*
Executive Vice President
416 815 2374
arlin.markowitz@cbre.com

ALEX EDMISON*
Senior Vice President
416 874 7266
alex.edmison@cbre.com

JACKSON TURNER**
Senior Vice President
416 815 2394
jackson.turner@cbre.com

EMILY EVERETT*
Sales Associate
647 943 4185
emily.everett@cbre.com

*Sales Representative **Broker

CBRE

This disclaimer shall apply to CBRE Limited, Real Estate Brokerage, and to all other divisions of the Corporation; to include all employees and independent contractors ("CBRE"). The information set out herein, including, without limitation, any projections, images, opinions, assumptions and estimates obtained from third parties (the "Information") has not been verified by CBRE, and CBRE does not represent, warrant or guarantee the accuracy, correctness and completeness of the Information. CBRE does not accept or assume any responsibility or liability, direct or consequential, for the Information or the recipient's reliance upon the Information. The recipient of the Information should take such steps as the recipient may deem necessary to verify the Information prior to placing any reliance upon the Information. The Information may change and any property described in the Information may be withdrawn from the market at any time without notice or obligation to the recipient from CBRE. CBRE and the CBRE logo are the service marks of CBRE Limited and/or its affiliated or related companies in other countries. All other marks displayed on this document are the property of their respective owners. All Rights Reserved.