

Prime Retail for Lease

# 1577 BAYVIEW

In the Heart of Toronto's Leaside Neighbourhood



**CBRE**



# 1577 BAYVIEW

Prime Retail for Lease

**Address:** 1577 Bayview Avenue, Toronto

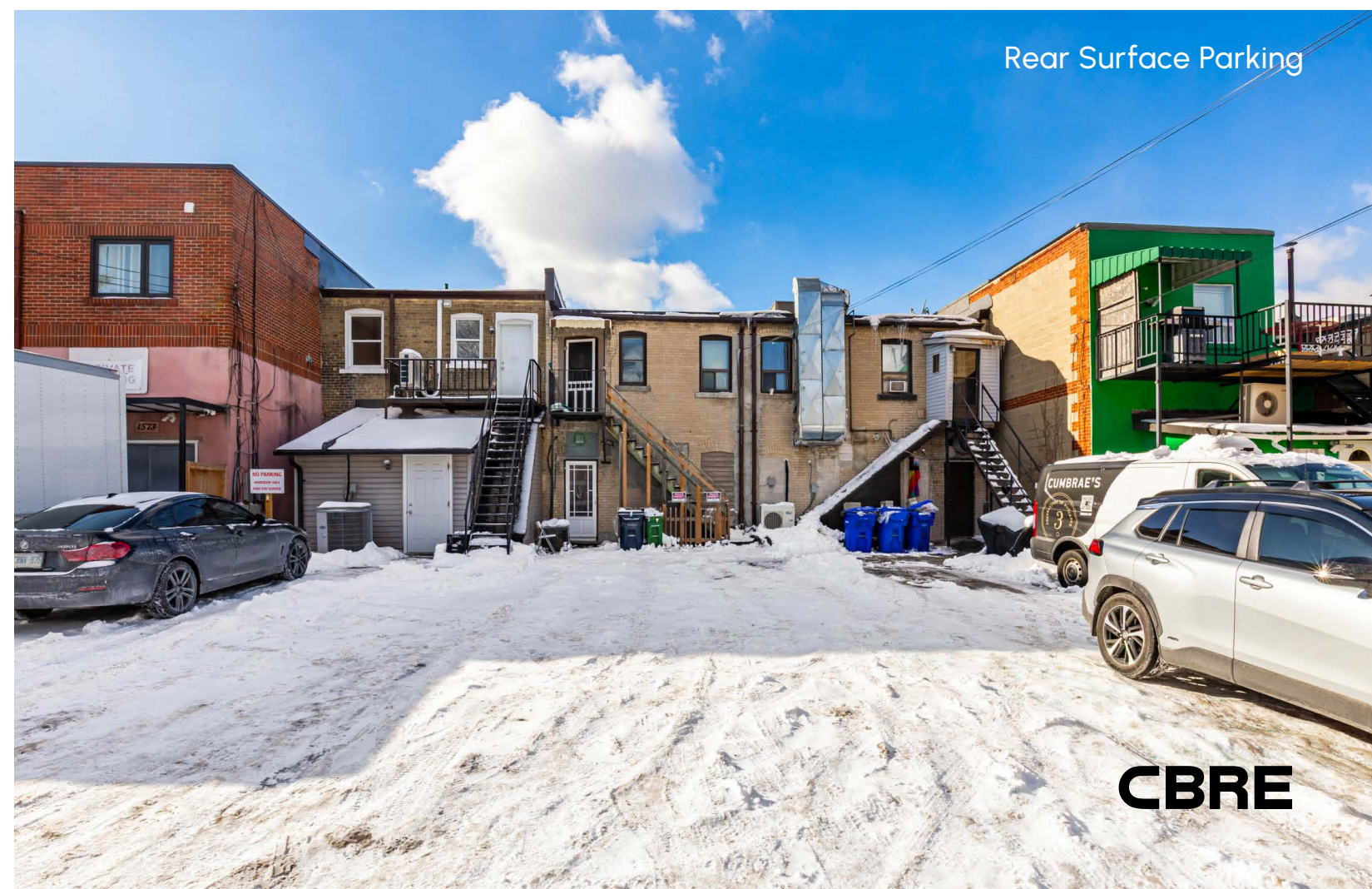
**Size:** 763 sq. ft. + full basement

**Net Rent:** \$6,000 / month

**TMI:** \$2,212 / month

**Available:** 90 days' notice

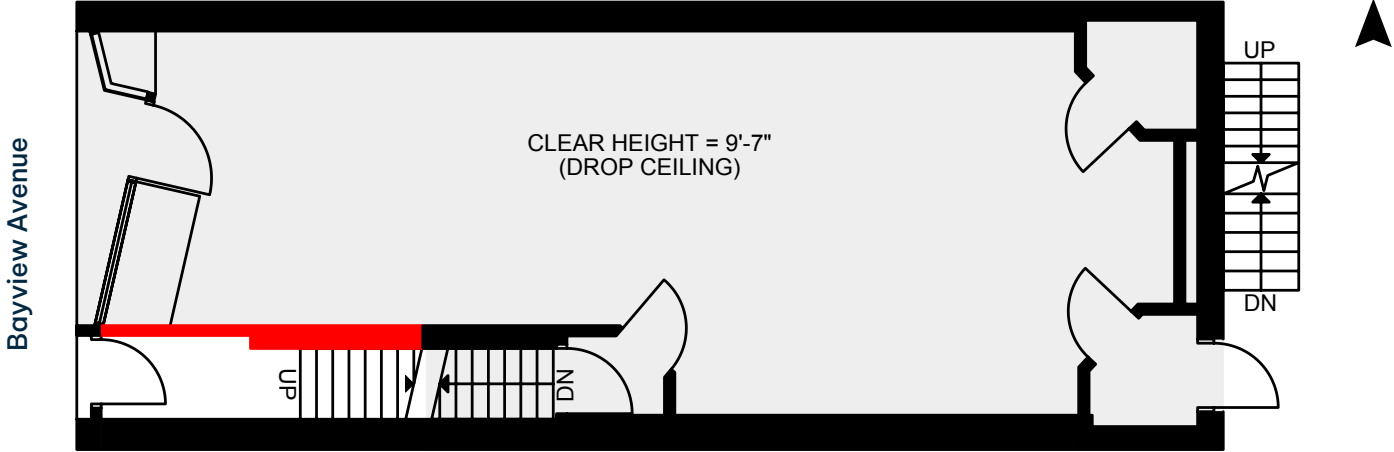
- Rare opportunity to secure right-sized streetfront retail space in the highly sought-after Leaside neighbourhood
- Rear surface parking
- Both the ground and lower level have great ceiling heights
- Excellent neighbouring tenancies including Cumbrae's, Craig's Cookies, Shoppers Drug Mart, Dollarama, Starbucks, LCBO, West Coast Kids, The Bagel House and many more



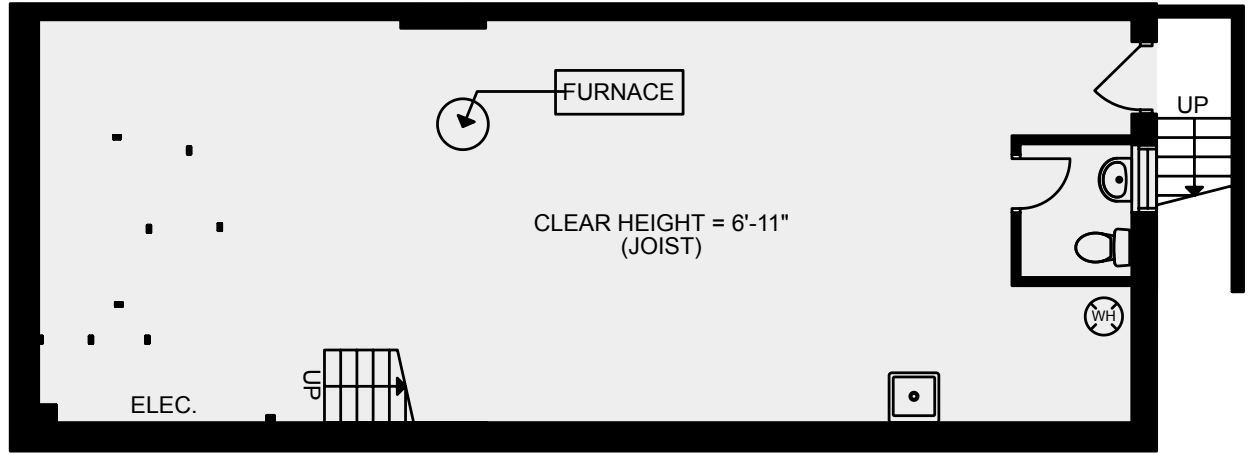


# Floor Plans

Ground 763 SF



Basement 828 SF





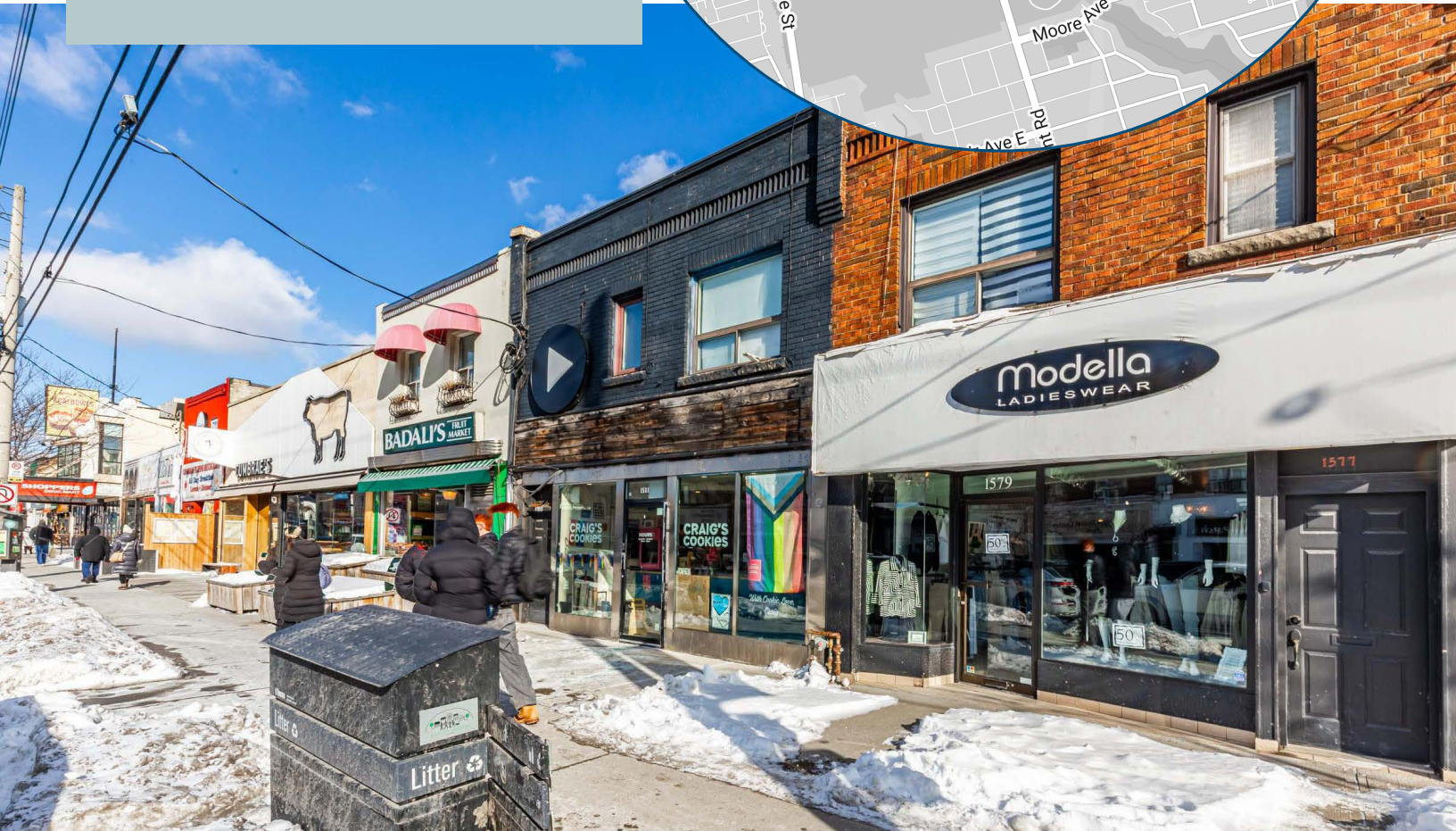





# The Location

Leaside

1577 Bayview Avenue is located in midtown Toronto along the busiest stretch of Bayview in the heart of Leaside neighbourhood. Bayview is home to a collection of popular restaurants, clothing and specialty stores catering to the surrounding upscale residential area. The property is less than a ten minute walk to the future Leaside LRT crosstown station and a short bus ride away from Davisville subway station.







FAIRWAY RESTAURANT  
WEST COAST KIDS



HOLLYWOOD GELATO  
BOMOU ARTISANAL BAKERY  
JING CHINESE  
PÂTISSERIE LA CIGOGNE  
BAYVIE W NATURAL FOODS  
MIRAGE MEDITERRANEAN  
RAMONA'S KITCHEN  
CORNFLOWER BLUE  
DUFFS FAMOUS WINGS  
THE FLOWER PATCH  
RAHIER PATISserie  
MAYRIK  
MY ROTI PLACE  
EGGSTATIC  
VERDI RESTAURANT  
BRUONO RESTAURANT  
THE DAUGHTER  
KIMS NAIL SALON TOO







BELSIZE DRIVE  
RBC  
THE BAGEL HOUSE  
MCSORLEY'S GRILL  
LEASIDE PETS  
THE GLAM BAR  
BASKIN-ROBBINS  
WILD WING



MILLWOOD ROAD  
LCBO  
VALU-MART  
DAVENPORT GARDEN CENTRE

THE CHOCOLATE MESSENGER  
PIZZA PIZZA

FLEMMING CRESCENT

BAYVIEW JUG MILK  
YOUR CLOTHES FRIENDS  
MERCHANT OF TENNIS  
DARNA MIDDLE EASTERN KITCHEN  
TZATZ  
SHOPPERS DRUG MART  
HERMIES  
CUMBRAE'S  
BADALI'S  
CRAIG'S COOKIES  
**1577 BAYVIEW**  
HOMEBODY  
SUMMERS BEST  
RON WHITE  
TUTTO PRONTO BAYVIEW  
MAURYA EAST INDIAN ROTI  
SCOTIABANK  
STARBUCKS  
DE LA MAR FRESH FISH MARKET  
STATE OF THE ART GALLERY  
FIORIO SALON & SPA  
COBS BREAD  
PASSION FRUITS  
DOLLARAMA  
CIBC  
LIT ESPRESSO BAR  
WRITE IMPRESSIONS










TD Canada  
GREEN P PARKING



## Contact

**ARLIN MARKOWITZ\***

Executive Vice President

416 815 2374

[arlin.markowitz@cbre.com](mailto:arlin.markowitz@cbre.com)

**JACKSON TURNER\*\***

Senior Vice President

416 815 2394

[jackson.turner@cbre.com](mailto:jackson.turner@cbre.com)

**ALEX EDMISON\***

Senior Vice President

416 874 7266

[alex.edmison@cbre.com](mailto:alex.edmison@cbre.com)

**EMILY EVERETT\***

Sales Associate

647 943 4185

[emily.everett@cbre.com](mailto:emily.everett@cbre.com)

\*Sales Representative \*\*Broker

The CBRE logo is displayed in a bold, white, sans-serif font against a dark blue background.

This disclaimer shall apply to CBRE Limited, Real Estate Brokerage, and to all other divisions of the Corporation; to include all employees and independent contractors ("CBRE"). The information set out herein, including, without limitation, any projections, images, opinions, assumptions and estimates obtained from third parties (the "Information") has not been verified by CBRE, and CBRE does not represent, warrant or guarantee the accuracy, correctness and completeness of the Information. CBRE does not accept or assume any responsibility or liability, direct or consequential, for the Information or the recipient's reliance upon the Information. The recipient of the Information should take such steps as the recipient may deem necessary to verify the Information prior to placing any reliance upon the Information. The Information may change and any property described in the Information may be withdrawn from the market at any time without notice or obligation to the recipient from CBRE. CBRE and the CBRE logo are the service marks of CBRE Limited and/or its affiliated or related companies in other countries. All other marks displayed on this document are the property of their respective owners. All Rights Reserved.