

THREE FORTY FIVE WILSON AVENUE

Corner Retail For Lease | Wilson Avenue & Bathurst Street

Ample Surface Level Parking | Proximity to HWY 401, Yorkdale Mall & Downsview Park



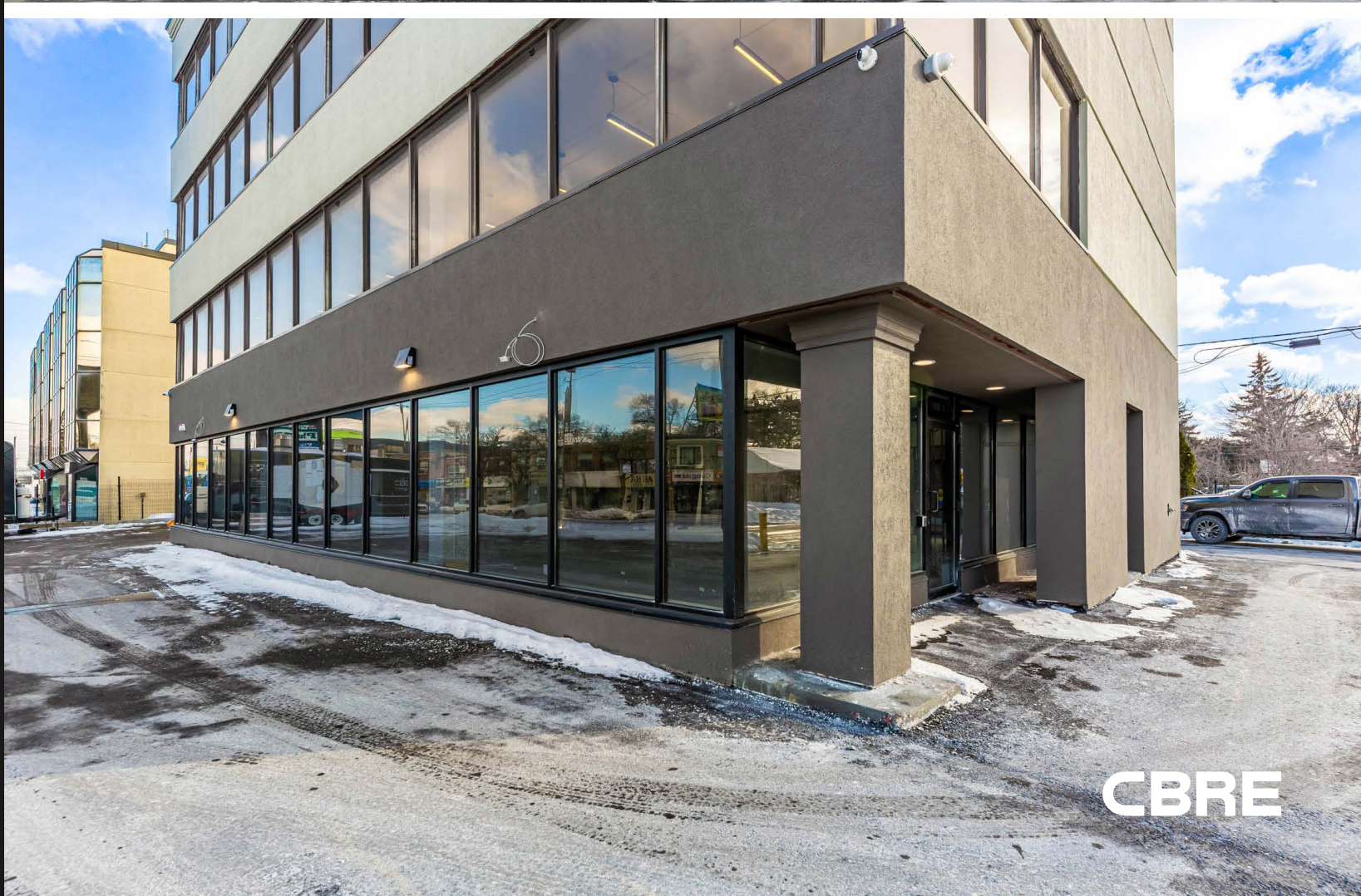
CBRE

Property Details

Address:	345 Wilson Avenue, Toronto
Size:	2,935 sq. ft.
Net Rent:	\$50.00 per sq. ft.
TMI:	\$14.41 per sq. ft.
Available:	Immediately

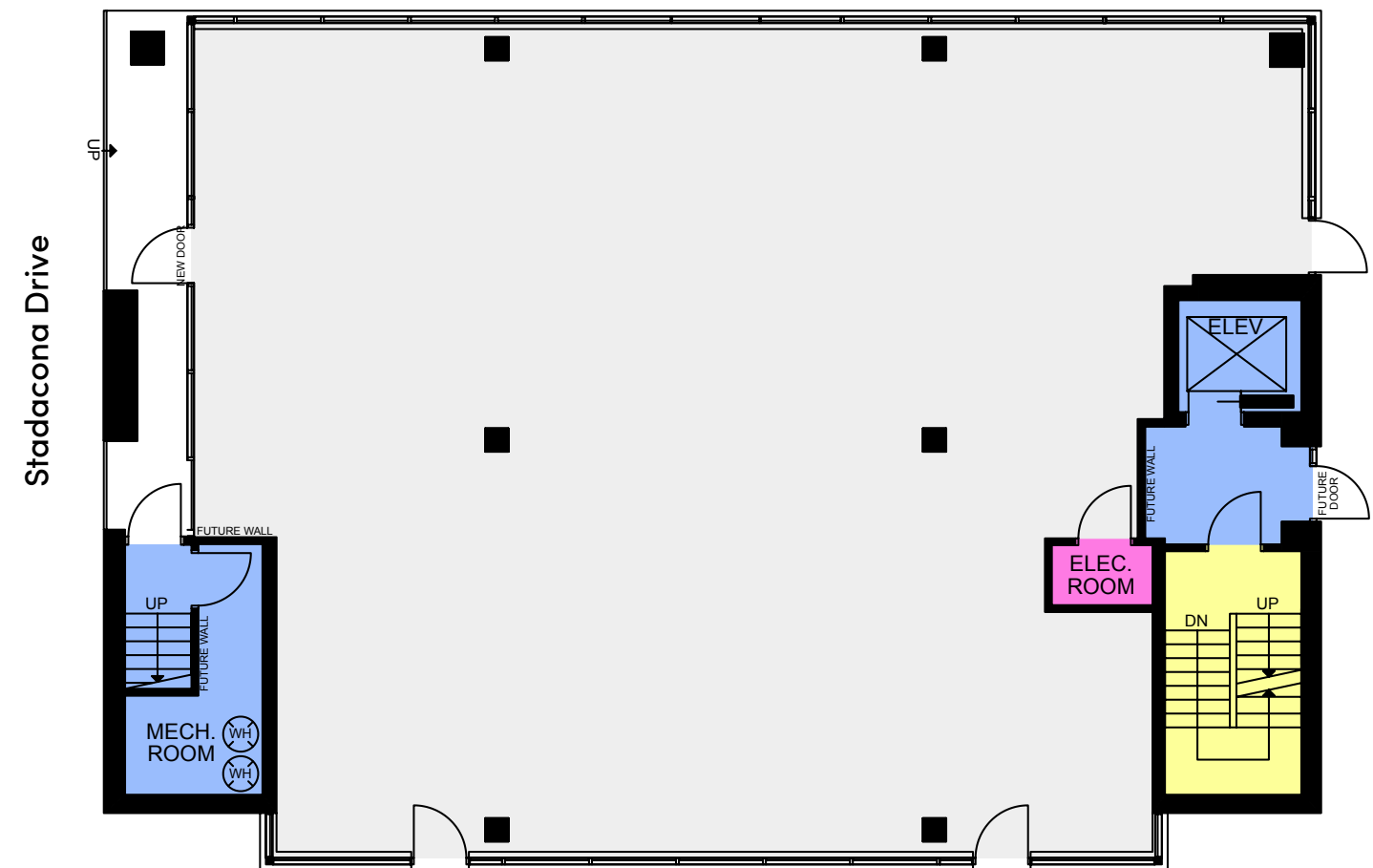
- Bright and open, recently renovated ground floor space
- Prime corner location offering strong street presence, visibility, and prominent signage opportunities
- Rare ample surface parking
- Transit-oriented North York location near Yorkdale with immediate access to Hwy 401, Allen Expressway, and Bathurst Street
- Located in a rapidly intensifying growth area

 [Click for Property Video](#)



Ground Floor
2,935 SF

Wilson Avenue

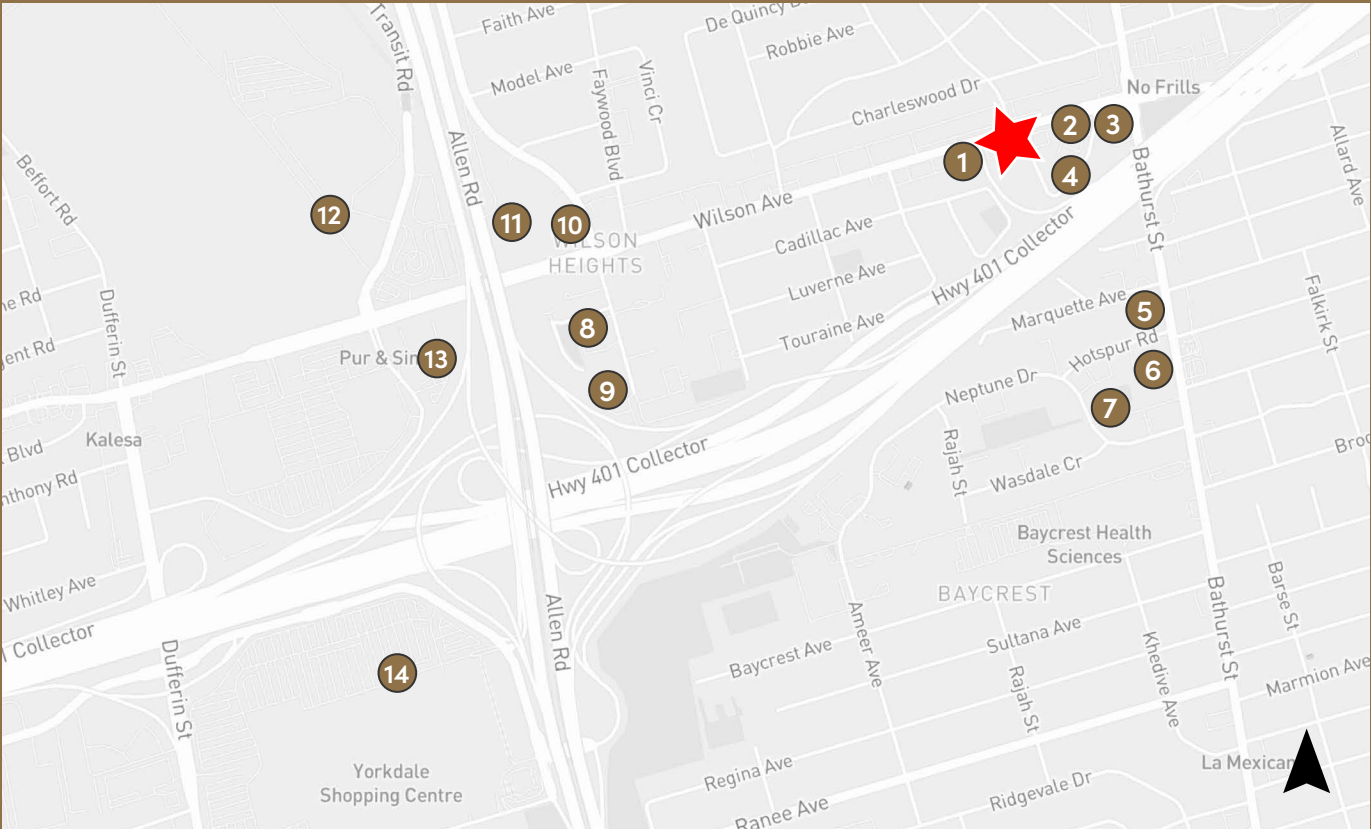


Ample Surface Parking



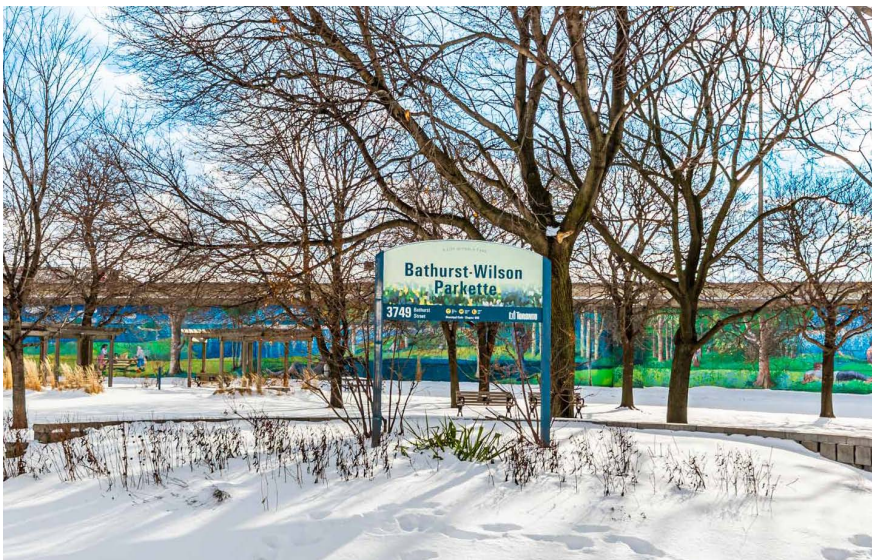


NEIGHBOURING DEVELOPMENTS



#	Address/Project Name	Status	Units
1	381 Wilson Ave	Pre-Construction	259
2	333 Wilson Ave	Pre-Construction	185
3	3750 Bathurst	Pre-Construction	503
4	47 Stadacona	Pre-Construction	190
5	1 Marquette	Pre-Construction	20
6	3636 Bathurst	Pre-Construction	271
7	50 Neptune	Pre-Construction	164
8	Express Condos	Under Construction	673
9	2 Tippet Road	Pre-Construction	417
10	50 Wilson Heights - Block 2	Under Construction	767
11	50 Wilson Heights - Block 1	Under Construction	210
12	YZD Community	Pre-Construction	30,000
13	75 Billy Bishop Way	Pre-Construction	2,055
14	Yorkdale Intensification	Pre-Construction	7,935

NEIGHBOURING TENANTS / AMENITIES



ADVISORY TEAM

Arlin Markowitz*
Executive Vice President
416 815 2374
arlin.markowitz@cbre.com

Jackson Turner**
Senior Vice President
416 815 2394
jackson.turner@cbre.com

Alex Edmison*
Senior Vice President
416 874 7266
alex.edmison@cbre.com

Emily Everett*
Sales Associate
647 943 4185
emily.everett@cbre.com

Reid Bethell*
Senior Sales Associate
416 945 6242
reid.bethell@cbre.com

*Sales Representative **Broker

CBRE

This disclaimer shall apply to CBRE Limited, and to all divisions of the Corporation ("CBRE"). The information set out herein (the "Information") has not been verified by CBRE, and CBRE does not represent, warrant or guarantee the accuracy, correctness and completeness of the Information. CBRE does not accept or assume any responsibility or liability, direct or consequential, for the Information or the recipient's reliance upon the Information. The recipient of the Information should take such steps as the recipient may deem necessary to verify the Information prior to placing any reliance upon the Information. The Information may change and any property described in the Information may be withdrawn from the market at any time without notice or obligation to the recipient from CBRE.