

Yonge Street Retail for Lease

758 Yonge Street

Toronto, ON



Yonge Street Retail for Lease

758 Yonge Street

Toronto, ON

Size: 1,159 sq. ft.

Gross Rent: \$17,000 / month

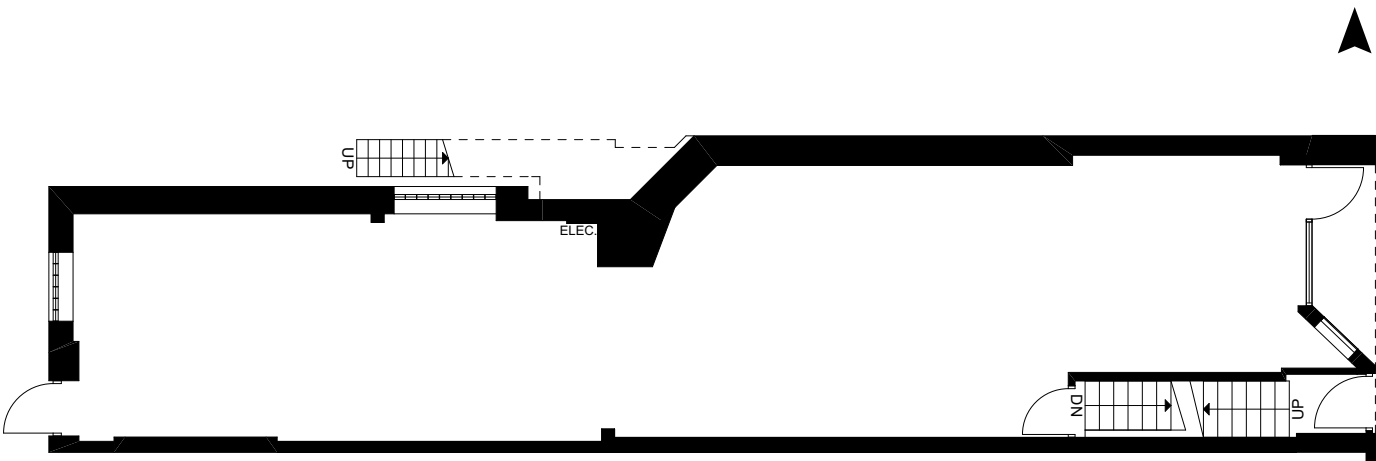
Available: Immediately

- Two doors down from the corner of Bloor and Yonge and Bloor-Yonge subway station
- High pedestrian traffic year round
- Neighbouring tenants include Chick-fil-A, HMart, Shoppers Drug Mart and Popeye's Chicken, Ballroom Bowl, Nike, Mango and Scotiabank



Floor Plans

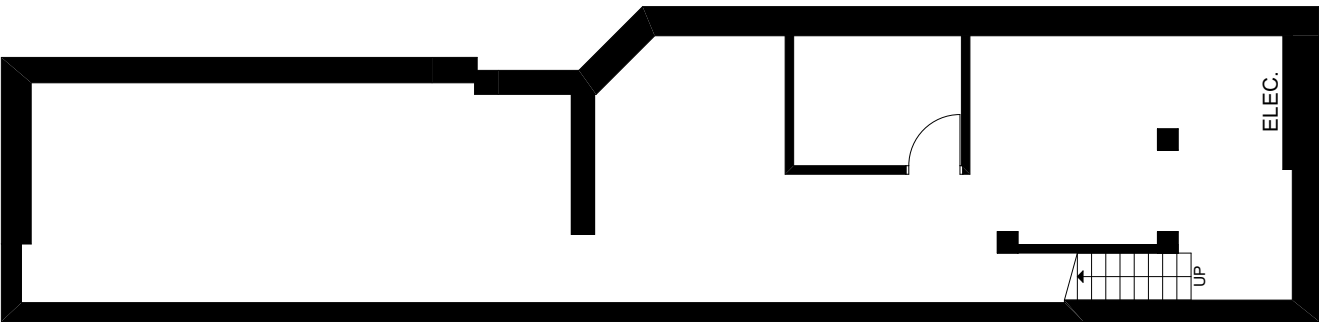
Ground Floor



Yonge Street

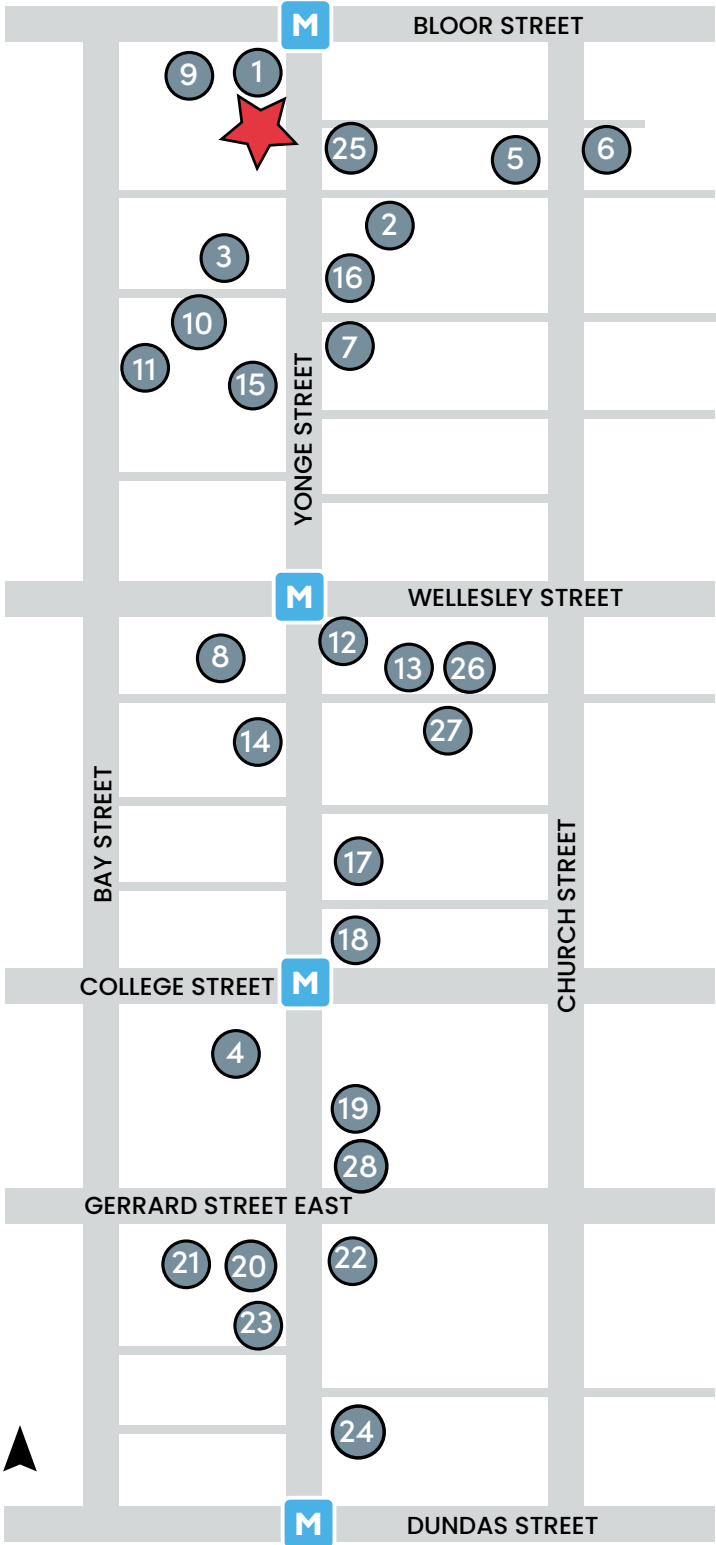


Basement



Area Developments

21,822 new units



	Address/Name	# of Units	Status
1	The One	505	Construction
2	15 Charles	549	Pre-Construction
3	10 St. Mary	465	Pre-Construction
4	College Park	2,584	Pre-Construction
5	The Charles	428	Construction
6	625 Church	656	Pre-Construction
7	619 Yonge	606	Pre-Construction
8	530 Yonge	822	Pre-Construction
9	19 Bloor West	528	Pre-Construction
10	25 St. Mary	1143	Pre-Construction
11	1075 Bay	540	Pre-Construction
12	543 Yonge	679	Pre-Construction
13	20 Maitland	502	Construction
14	510 Yonge	500	Pre-Construction
15	646 Yonge	548	Pre-Construction
16	645 Yonge	789	Pre-Construction
17	475 Yonge	1611	Pre-Construction
18	2 Carlton	990	Pre-Construction
19	415 Yonge	471	Pre-Construction
20	372 Yonge	415	Pre-Construction
21	Chelsea Green	2109	Pre-Construction
22	Concord Sky	1106	Construction
23	8 Elm	819	Construction
24	335 Yonge	165	Pre-Construction
25	699 Yonge	514	Pre-Construction
26	34 Maitland	529	Pre-Construction
27	33 Maitland	439	Pre-Construction
28	399 Yonge	810	Pre-Construction
Total		21,822	





For More Information, Please Contact:

ARLIN MARKOWITZ*
Executive Vice President
416 815 2374
arlin.markowitz@cbre.com

ALEX EDMISON*
Senior Vice President
416 874 7266
alex.edmison@cbre.com

JACKSON TURNER**
Senior Vice President
416 815 2394
jackson.turner@cbre.com

EMILY EVERETT*
Sales Associate
647 943 4185
emily.everett@cbre.com

*Sales Representative **Broker

CBRE

This disclaimer shall apply to CBRE Limited, Real Estate Brokerage, and to all other divisions of the Corporation; to include all employees and independent contractors ("CBRE"). The information set out herein, including, without limitation, any projections, images, opinions, assumptions and estimates obtained from third parties (the "Information") has not been verified by CBRE, and CBRE does not represent, warrant or guarantee the accuracy, correctness and completeness of the Information. CBRE does not accept or assume any responsibility or liability, direct or consequential, for the Information or the recipient's reliance upon the Information. The recipient of the Information should take such steps as the recipient may deem necessary to verify the Information prior to placing any reliance upon the Information. The Information may change and any property described in the Information may be withdrawn from the market at any time without notice or obligation to the recipient from CBRE. CBRE and the CBRE logo are the service marks of CBRE Limited and/or its affiliated or related companies in other countries. All other marks displayed on this document are the property of their respective owners. All Rights Reserved.