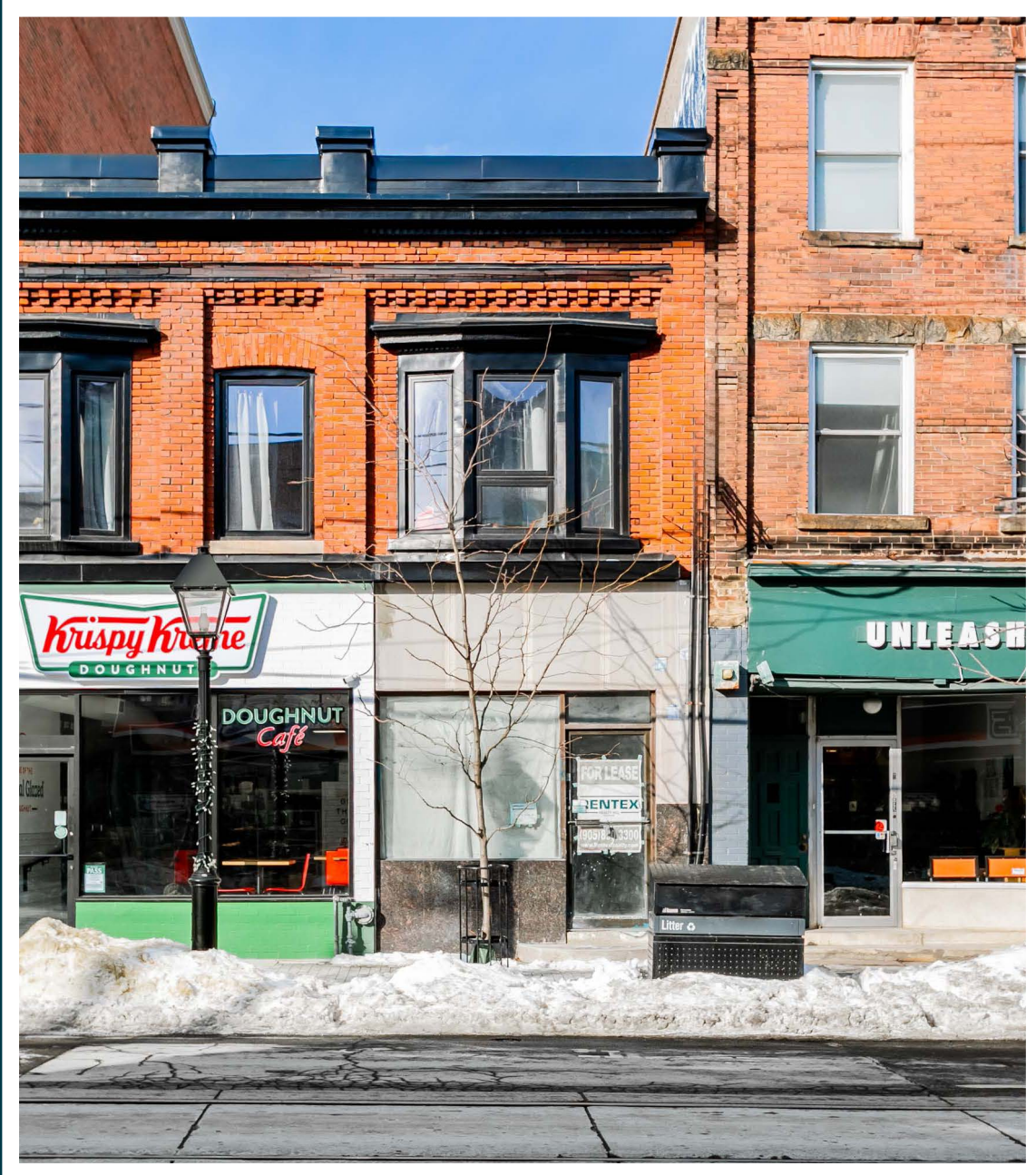


# 828 COLLEGE

Prime Streetfront Retail for Lease in Little Italy



TORONTO, ONTARIO

**CBRE**



# 828 COLLEGE

Prime Streetfront Retail for Lease in Little Italy

**Address:** 828 College Street, Toronto

**Size:** 939 sq. ft. + 403 sq. ft. basement

**Net Rent:** \$63.00 per sq. ft.

**TMI:** \$13.07 per sq. ft.

**Available:** Immediately

- Incredible Little Italy location at College Street and Ossington Avenue
- High-traffic area, directly on the College streetcar line
- 1 rear covered parking spot available for lease at an additional \$175 per month + HST
- Neighbouring retailers and traffic drivers include Krispy Kreme, A&W, INS, Pet Valu, Kibo Sushi, Bar Isabel and many more





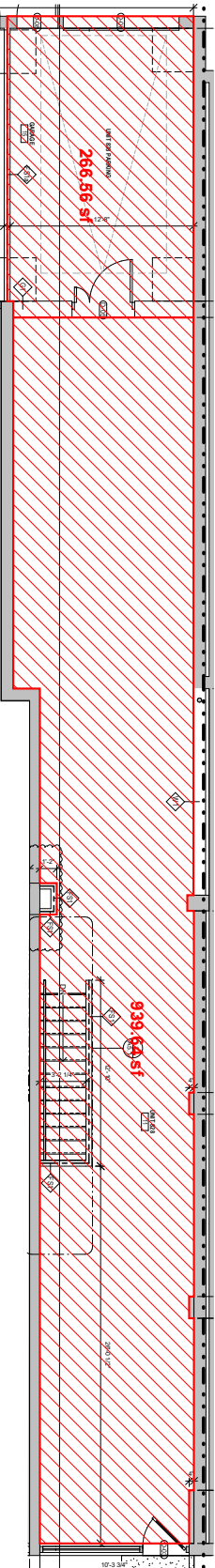




NEIGHBOURING TENANTS

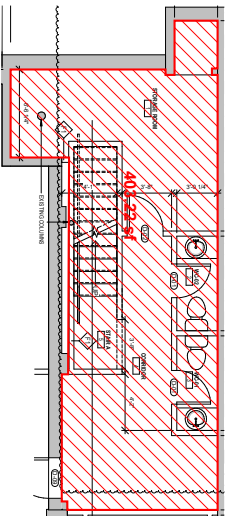


GROUND  
939 SF



COLLEGE STREET

BASEMENT  
403 SF



# CONTACT

ARLIN MARKOWITZ\*  
Executive Vice President  
416 815 2374  
arlin.markowitz@cbre.com

ALEX EDMISON\*  
Senior Vice President  
416 874 7266  
alex.edmison@cbre.com

JACKSON TURNER\*\*  
Senior Vice President  
416 815 2394  
jackson.turner@cbre.com

EMILY EVERETT\*  
Sales Associate  
647 943 4185  
emily.everett@cbre.com

KATELYN YOUNG  
Sales Representative  
416 495 6248  
katelyn.young@cbre.com

\*Sales Representative \*\*Broker

**CBRE**

This disclaimer shall apply to CBRE Limited, and to all divisions of the Corporation ("CBRE"). The information set out herein (the "Information") has not been verified by CBRE, and CBRE does not represent, warrant or guarantee the accuracy, correctness and completeness of the Information. CBRE does not accept or assume any responsibility or liability, direct or consequential, for the Information or the recipient's reliance upon the Information. The recipient of the Information should take such steps as the recipient may deem necessary to verify the Information prior to placing any reliance upon the Information. The Information may change and any property described in the Information may be withdrawn from the market at any time without notice or obligation to the recipient from CBRE.