

224 RICHMOND

STREET WEST, TORONTO

EXCEPTIONAL RETAIL/OFFICE SPACE IN THE HEART
OF THE ENTERTAINMENT DISTRICT

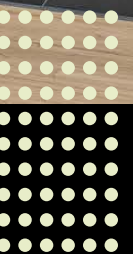


CBRE



8,986 SF

**OF EXCEPTIONAL RETAIL /
OFFICE SPACE IN TORONTO'S
ENTERTAINMENT DISTRICT**



224 RICHMOND

STREET WEST, TORONTO

PROPERTY DETAILS

Address: 224 Richmond Street West, Toronto

Size:

Ground:	501 sq. ft.
Second:	3,723 sq. ft.
Third:	3,723 sq. ft.
Fourth:	1,039 sq. ft.
Total:	8,986 sq. ft.

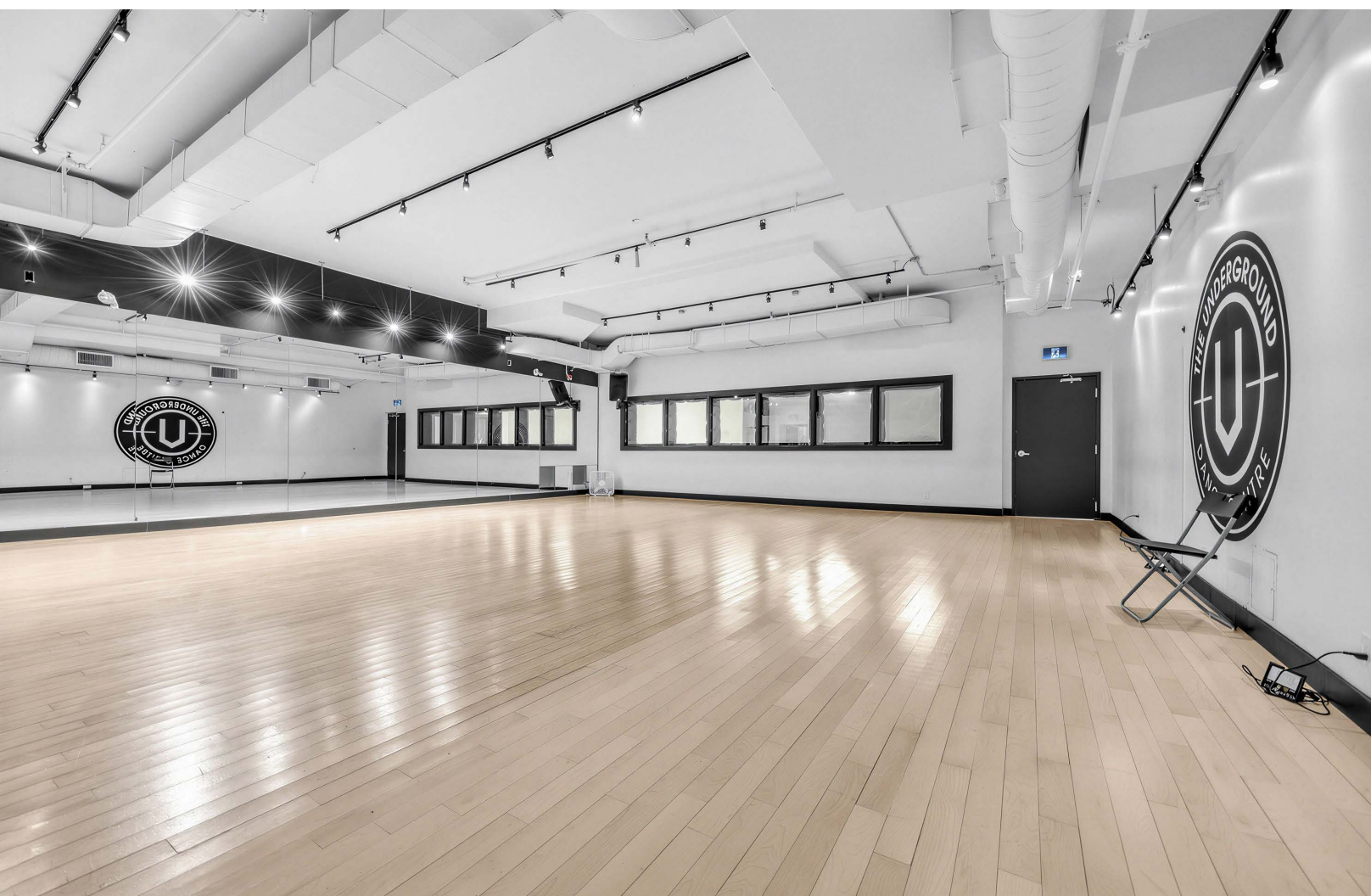
Net Rent: \$30.00 per sq. ft.

TMI: \$10.00 per sq. ft.

Available: November 1, 2026

- 8,986 sq. ft. of prime retail / office over four levels connected with an internal staircase
- Located in the heart of Toronto's Entertainment District, one of the city's highest-traffic and most dynamic neighbourhoods
- Surrounded by major office towers, luxury residential condos, world-class hotels and top tourist attractions
- Steps from Osgoode subway station and easy access to the Queen streetcar line



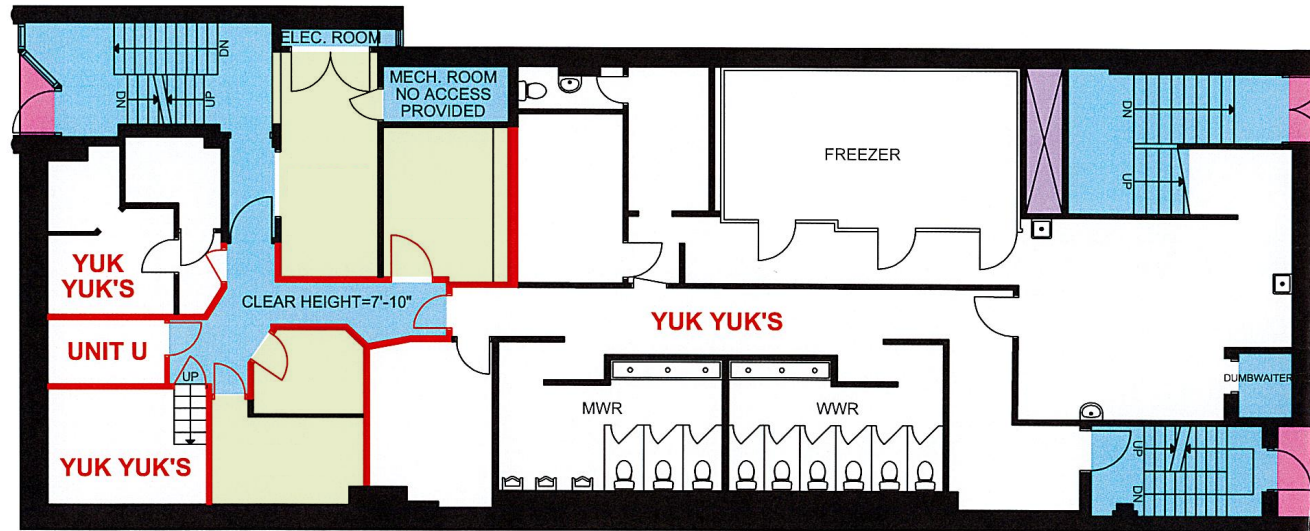


FLOOR PLANS

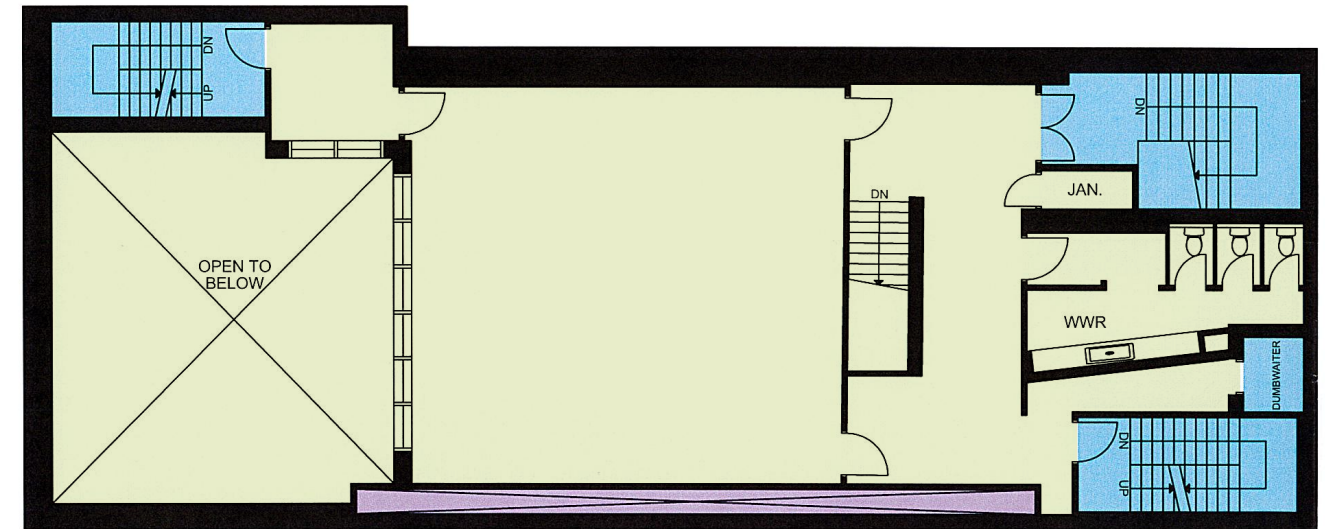
■ Subject Space
■ Common Area

GROUND LEVEL - 501 SF

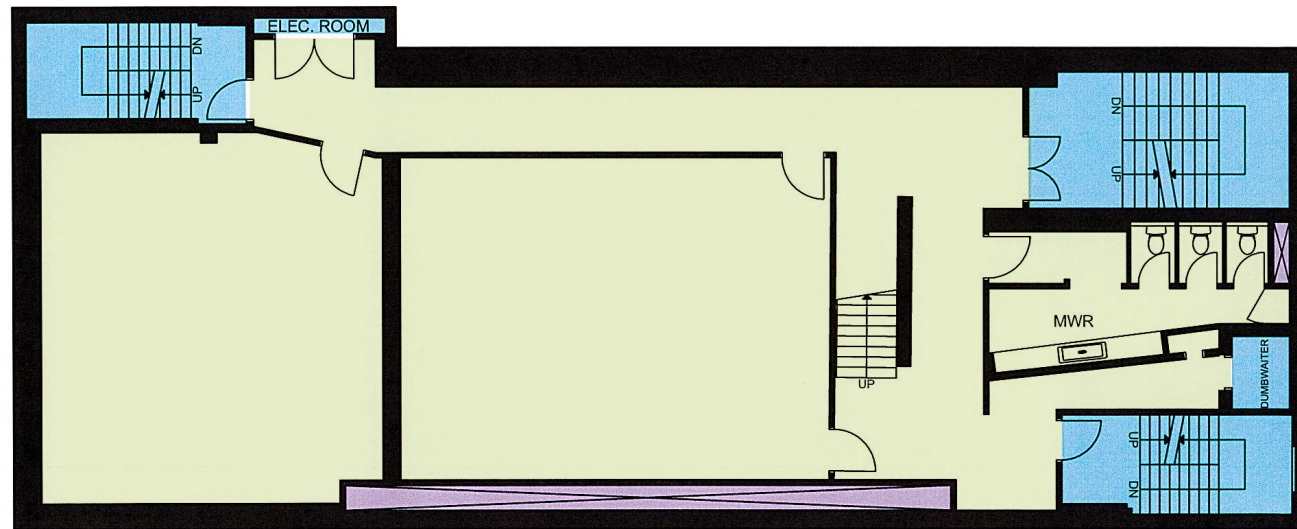
Richmond Street West



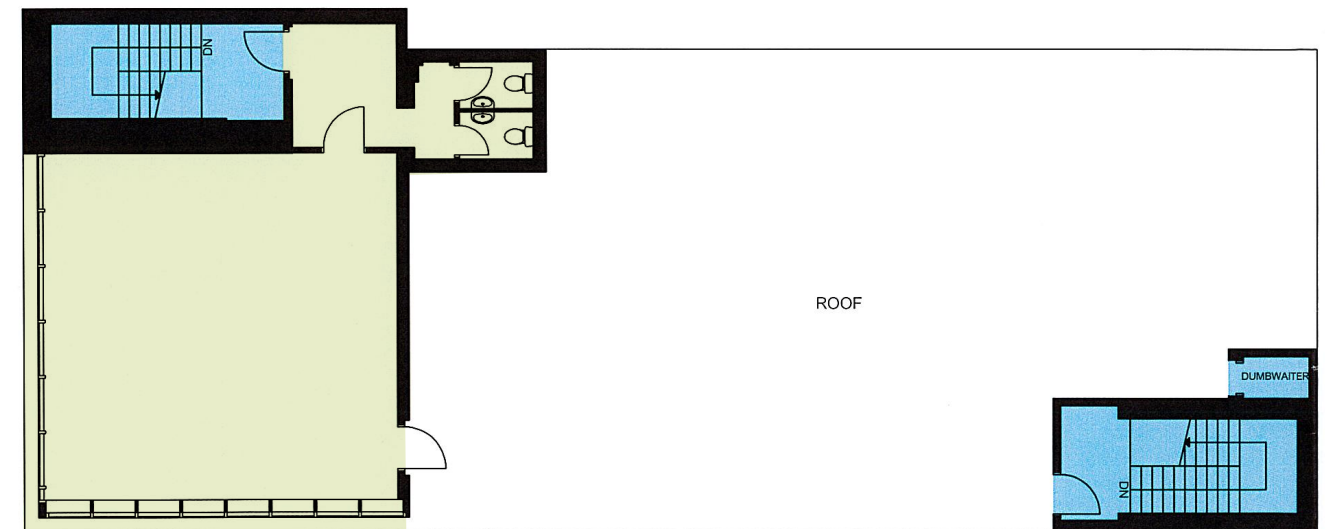
THIRD LEVEL - 3,723 SF



SECOND LEVEL - 3,723 SF



FOURTH LEVEL - 1,039 SF





Financial Core

Scotiabank Arena

Union Station

Ripley's Aquarium

Rogers Centre

Nathan Phillips Square

224 RICHMOND



Osgoode Station

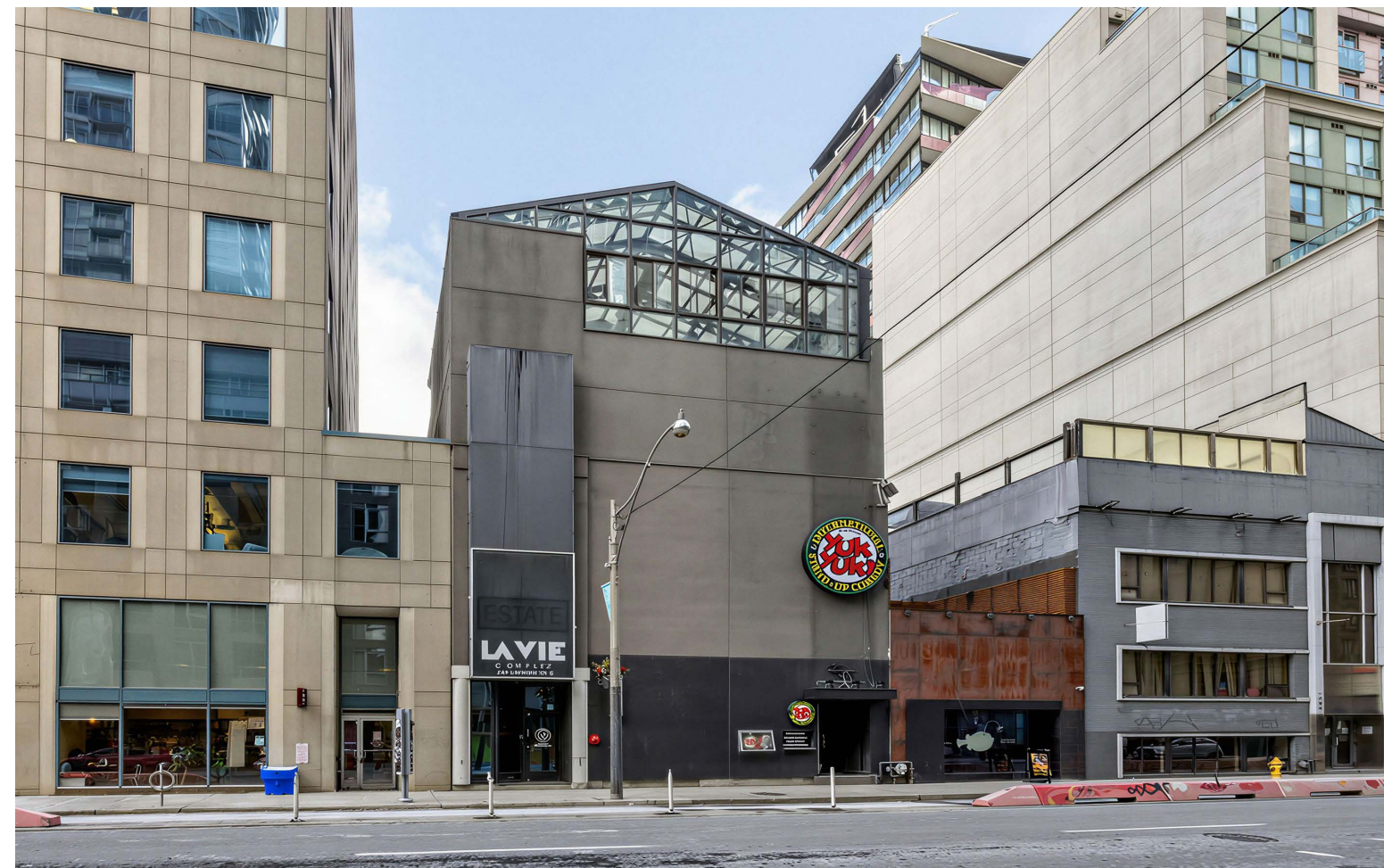
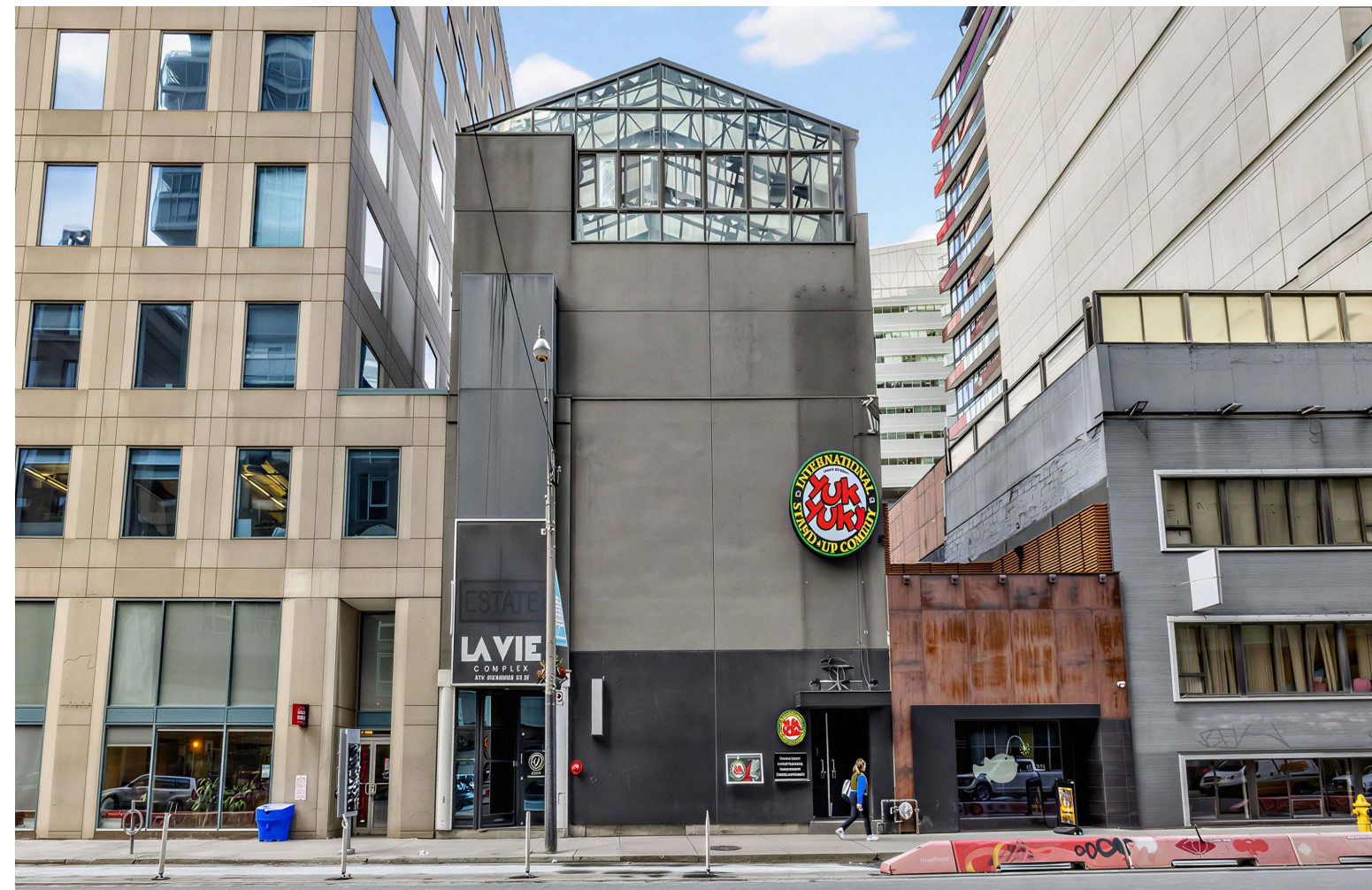
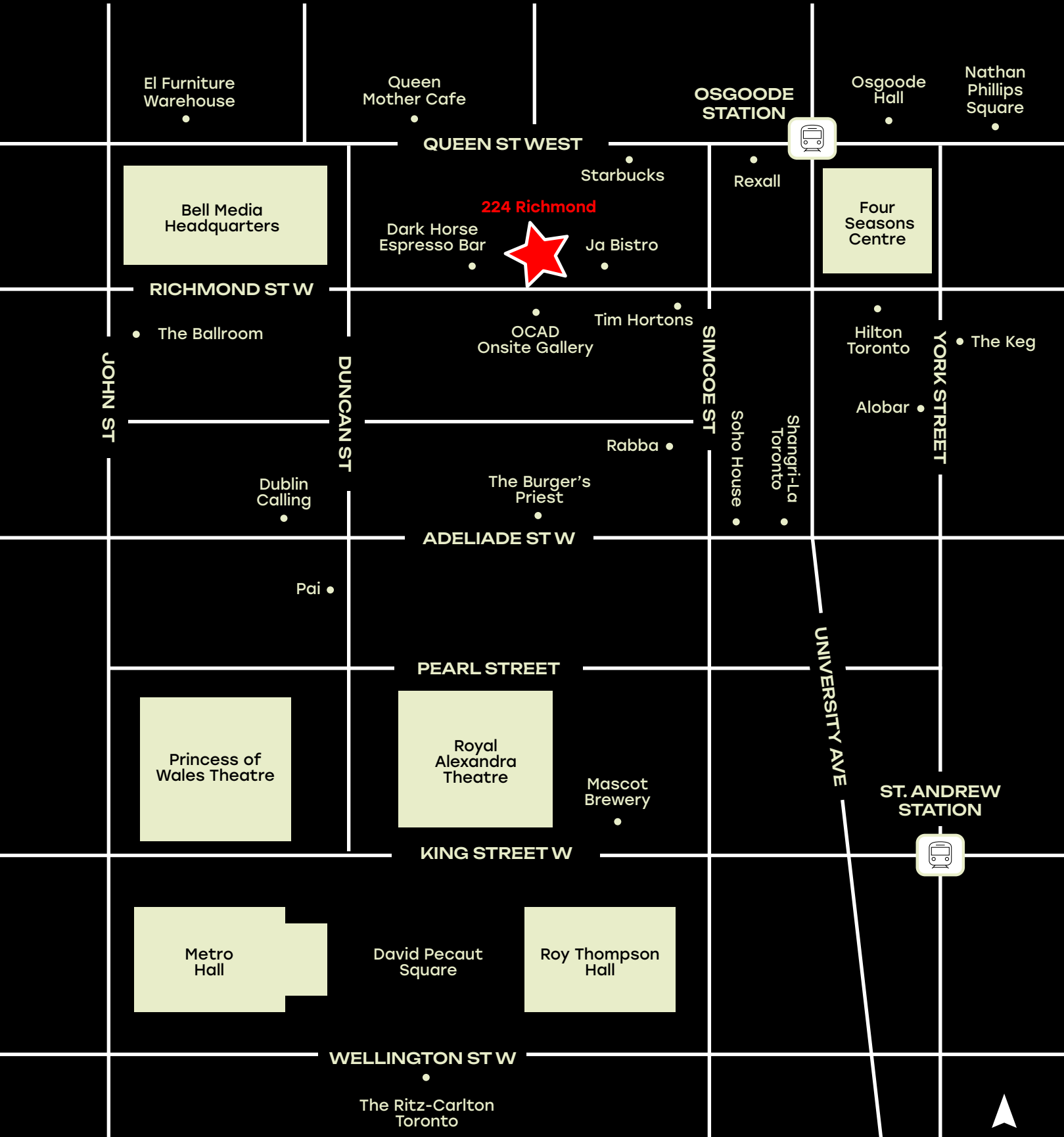
Queen Street West

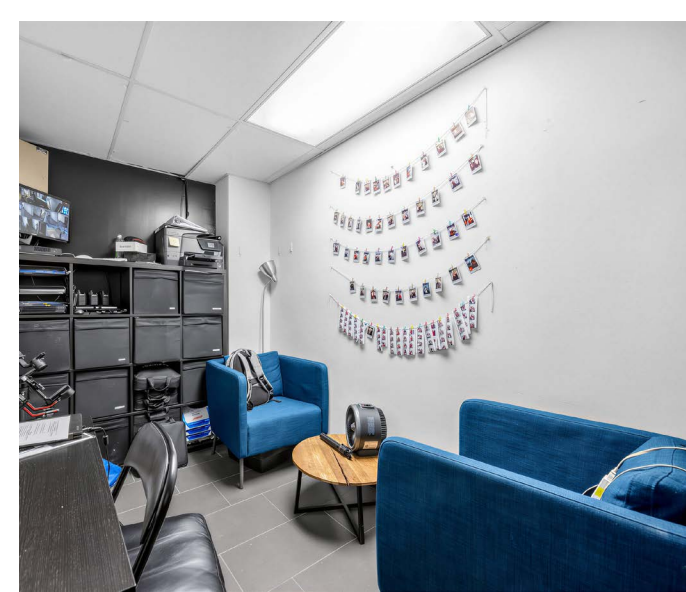
Art Gallery of Ontario

THE LOCATION

224 Richmond Street West sits at the intersection of Toronto's Financial Core and Entertainment Districts. With a perfect walk and transit score, the location offers immediate access to Osgoode Station, the King and Queen Street streetcar routes, and is a short walk from Union Station. The surrounding area is a high-density mix of office buildings and luxury residential towers, ensuring consistent foot traffic from a diverse professional demographic. This central position puts you steps away from the city's major cultural and tourist landmarks and the retail hub of Queen Street West, making it an ideal anchor for any business seeking a well-connected, urban presence.

LOCATION MAP





CBRE

CONTACT

ARLIN MARKOWITZ*
Executive Vice President
416 815 2374
arlin.markowitz@cbre.com

ALEX EDMISON*
Senior Vice President
416 874 7266
alex.edmison@cbre.com

JACKSON TURNER**
Senior Vice President
416 815 2394
jackson.turner@cbre.com

EMILY EVERETT*
Sales Associate
647 943 4185
emily.everett@cbre.com

*Sales Representative **Broker

CBRE

This disclaimer shall apply to CBRE Limited, Real Estate Brokerage, and to all other divisions of the Corporation; to include all employees and independent contractors ("CBRE"). The information set out herein, including, without limitation, any projections, images, opinions, assumptions and estimates obtained from third parties (the "Information") has not been verified by CBRE, and CBRE does not represent, warrant or guarantee the accuracy, correctness and completeness of the Information. CBRE does not accept or assume any responsibility or liability, direct or consequential, for the Information or the recipient's reliance upon the Information. The recipient of the Information should take such steps as the recipient may deem necessary to verify the Information prior to placing any reliance upon the Information. The Information may change and any property described in the Information may be withdrawn from the market at any time without notice or obligation to the recipient from CBRE. CBRE and the CBRE logo are the service marks of CBRE Limited and/or its affiliated or related companies in other countries. All other marks displayed on this document are the property of their respective owners. All Rights Reserved.