

# 410 ADELAIDE

STREET WEST, TORONTO

RETAIL FOR LEASE IN THE HEART  
OF DOWNTOWN WEST



**CBRE**

# 410 ADELAIDE

STREET WEST, TORONTO

## PROPERTY DETAILS

**Address:** 410 Adelaide Street West, Toronto

**Size:** 1,635 sq. ft.

**Net Rent:** \$38.00 per sq. ft.

**TMI:** \$14.05 per sq. ft.

**Available:** Immediately

- Excellent frontage on Adelaide Street West
- Bright and open space with floor to ceiling windows
- Located in the heart of Downtown West, steps from Spadina Avenue and the best stretch of King West
- Neighbouring retailers include Oxygen Yoga, Lagree Plus, Impact Kitchen, Black-Eyed Susans, Othership, Dollarama, HomeSense, barre3, Ace Hotel and Hoame

**CBRE**





# FLOOR PLAN



Adelaide Street West





Financial Core

Scotiabank Arena

Union Station

Ripley's Aquarium

Rogers Centre

Entertainment District

Queen Street West

**410  
ADELAIDE**

Spadina Avenue

Ace Hotel

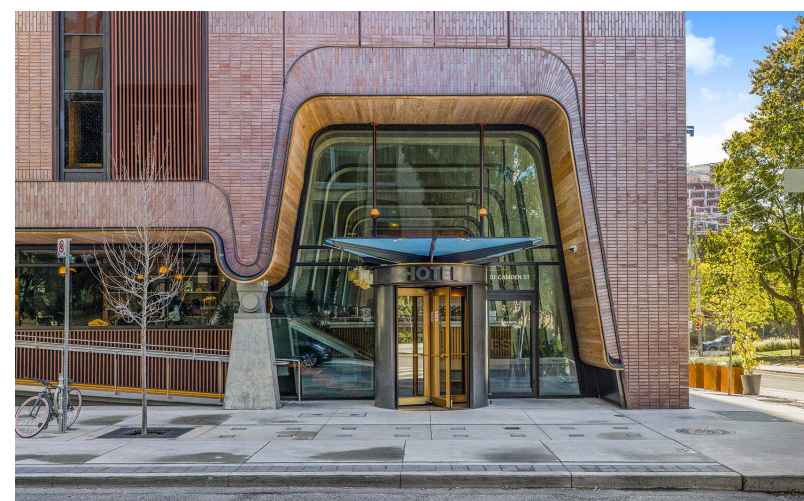
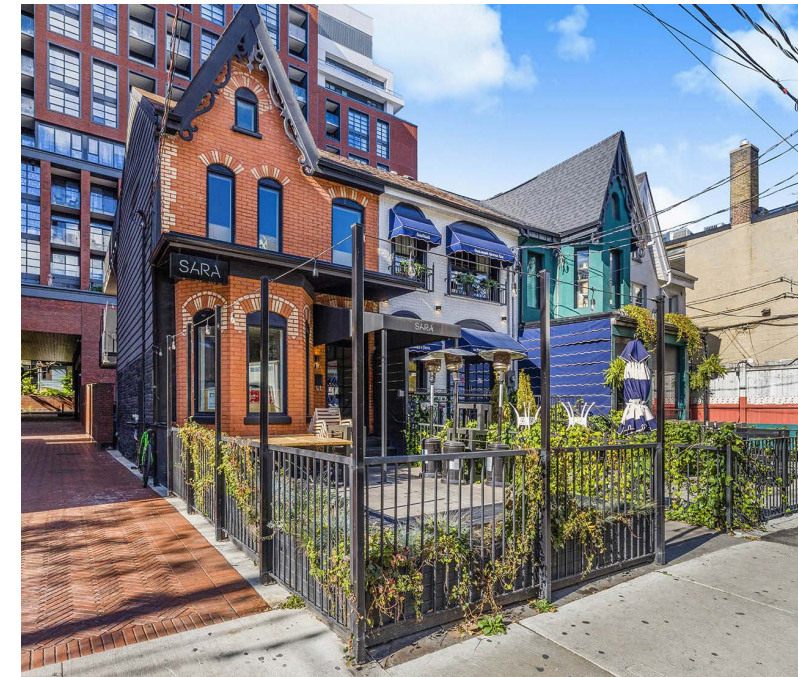
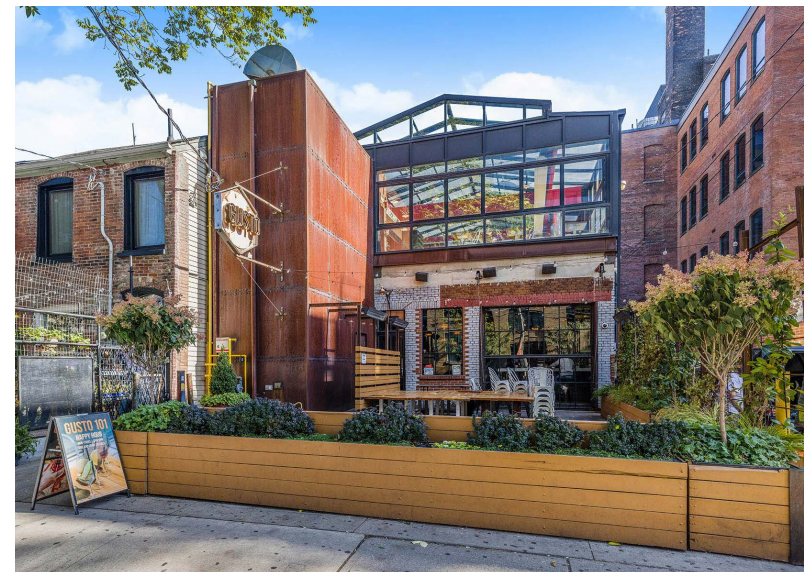
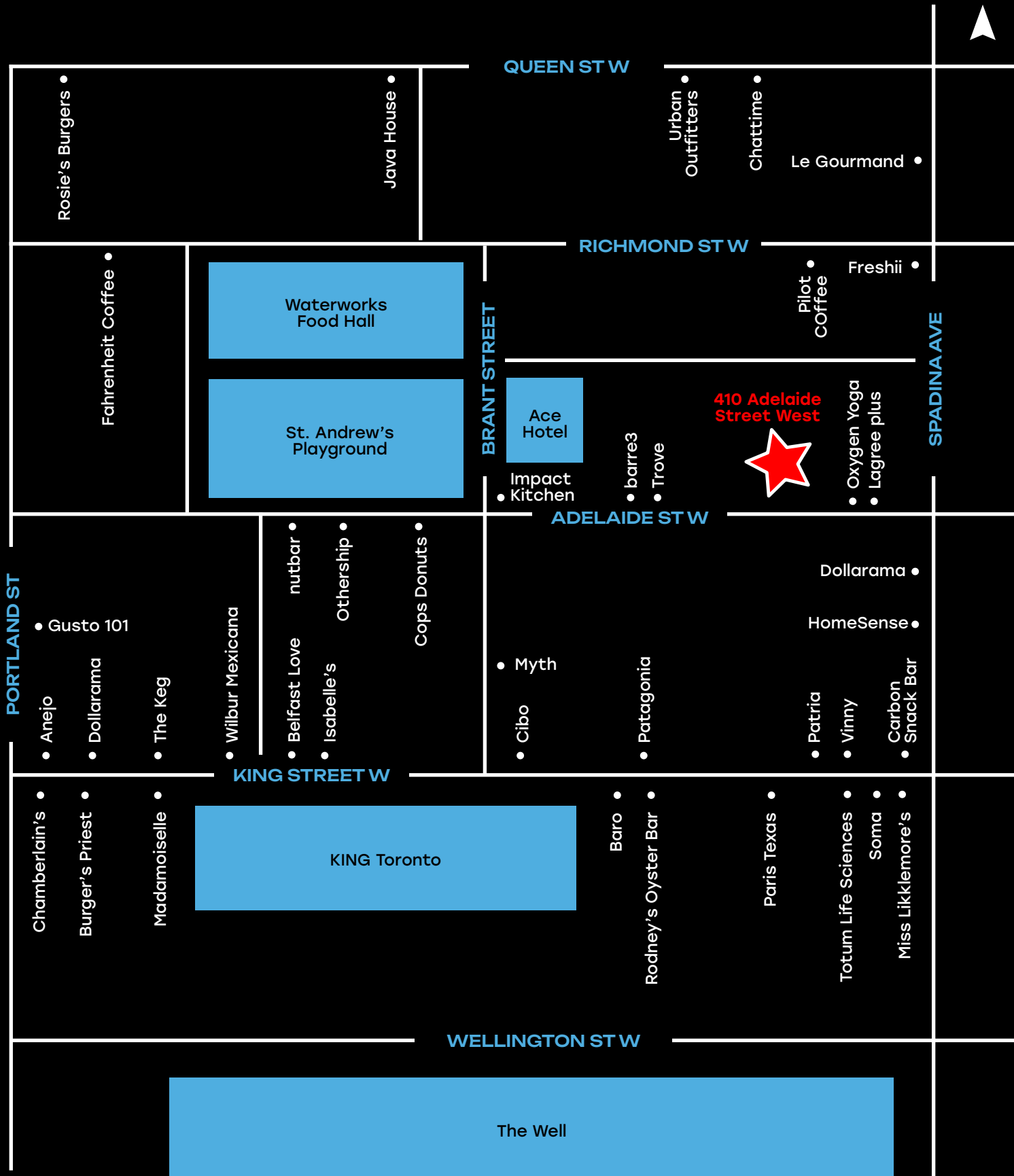
Waterwork's

## THE LOCATION

410 Adelaide Street West is located in the heart of Downtown West, just steps off the busy intersection of Spadina and Adelaide and a stones throw away from the heart of the Entertainment District. This neighbourhood has recently undergone a massive residential transformation, anchored by landmark developments like The Well, KING Toronto and waterworks, creating a high-density pocket of affluent professionals and urban dwellers.

The immediate area is home to a mix of trendy fitness studios, restaurants/bars, and boutique hotels including Impact Kitchen, the Ace Hotel, Myth, Totum Life Sciences, barre3, Cibo Wine Bar and many more.

# LOCATION MAP



# CONTACT

---

ARLIN MARKOWITZ\*  
Executive Vice President  
416 815 2374  
arlin.markowitz@cbre.com

ALEX EDMISON\*  
Senior Vice President  
416 874 7266  
alex.edmison@cbre.com

JACKSON TURNER\*\*  
Senior Vice President  
416 815 2394  
jackson.turner@cbre.com

EMILY EVERETT\*  
Sales Associate  
647 943 4185  
emily.everett@cbre.com

\*Sales Representative \*\*Broker

# CBRE

This disclaimer shall apply to CBRE Limited, Real Estate Brokerage, and to all other divisions of the Corporation; to include all employees and independent contractors ("CBRE"). The information set out herein, including, without limitation, any projections, images, opinions, assumptions and estimates obtained from third parties (the "Information") has not been verified by CBRE, and CBRE does not represent, warrant or guarantee the accuracy, correctness and completeness of the Information. CBRE does not accept or assume any responsibility or liability, direct or consequential, for the Information or the recipient's reliance upon the Information. The recipient of the Information should take such steps as the recipient may deem necessary to verify the Information prior to placing any reliance upon the Information. The Information may change and any property described in the Information may be withdrawn from the market at any time without notice or obligation to the recipient from CBRE. CBRE and the CBRE logo are the service marks of CBRE Limited and/or its affiliated or related companies in other countries. All other marks displayed on this document are the property of their respective owners. All Rights Reserved.