

171 KING STREET EAST

DOWNTOWN EAST RETAIL FOR LEASE • KING EAST DESIGN DISTRICT



CBRE

171 KING STREET EAST

PROPERTY DETAILS

Address: 171 King Street East, Toronto

Size: Ground: 2,038 sq. ft.
Basement: 1,710 sq. ft.

Net Rent: \$39.50 per sq. ft.

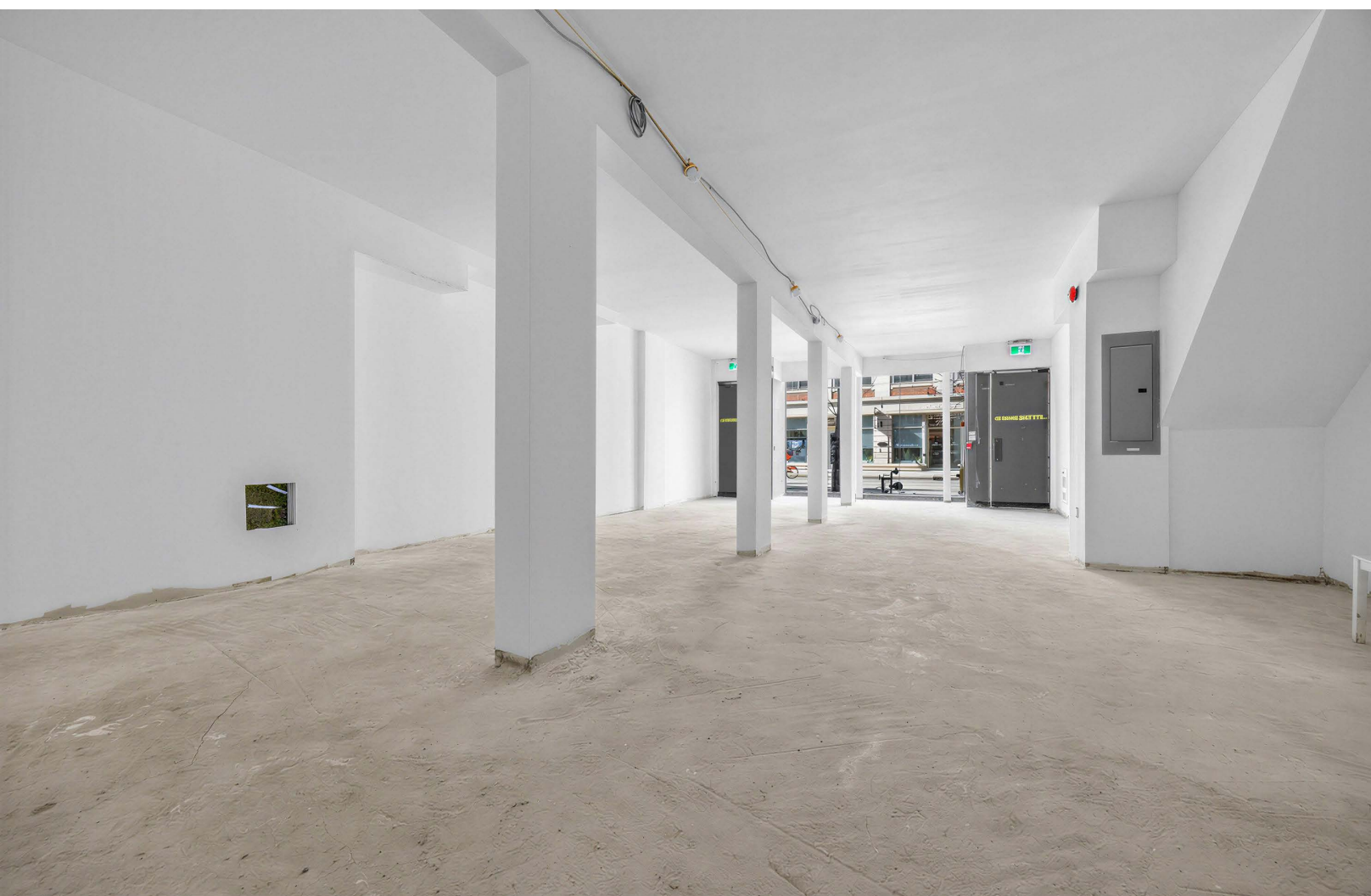
TMI: \$20.00 per sq. ft.

Available: Immediately

- Excellent frontage on King East in the heart of Toronto's King Street Design District
- Vibrant high-traffic area, directly on the King streetcar line and within walking distance to King subway station and the Financial Core
- Neighbouring retailers and traffic drivers include: Bar Ardo, Velvet Lane Cakes, George Brown College, Keilhauer Showroom, EQ3, Petit Dejuener, St. James Park, Neo Coffee Bar, Ardo Restaurant and many more

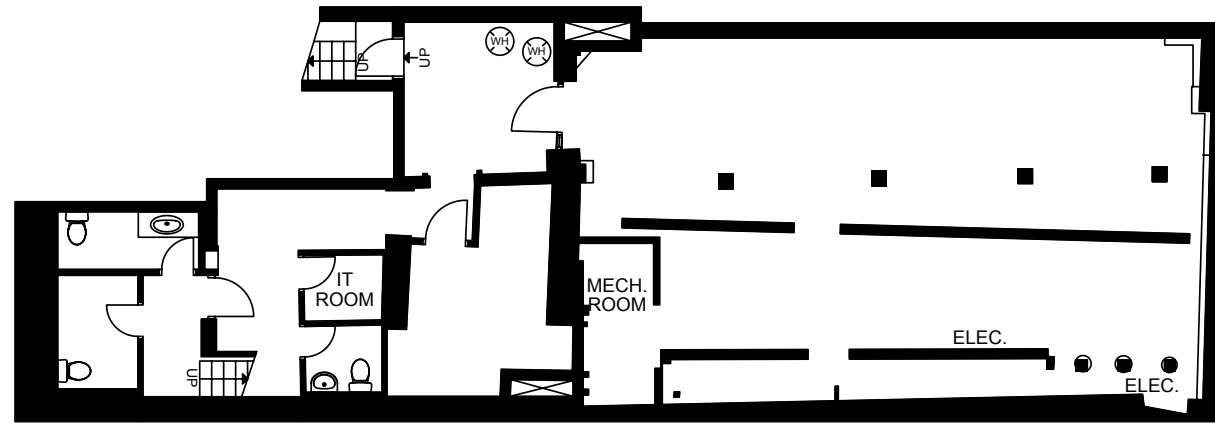
CBRE



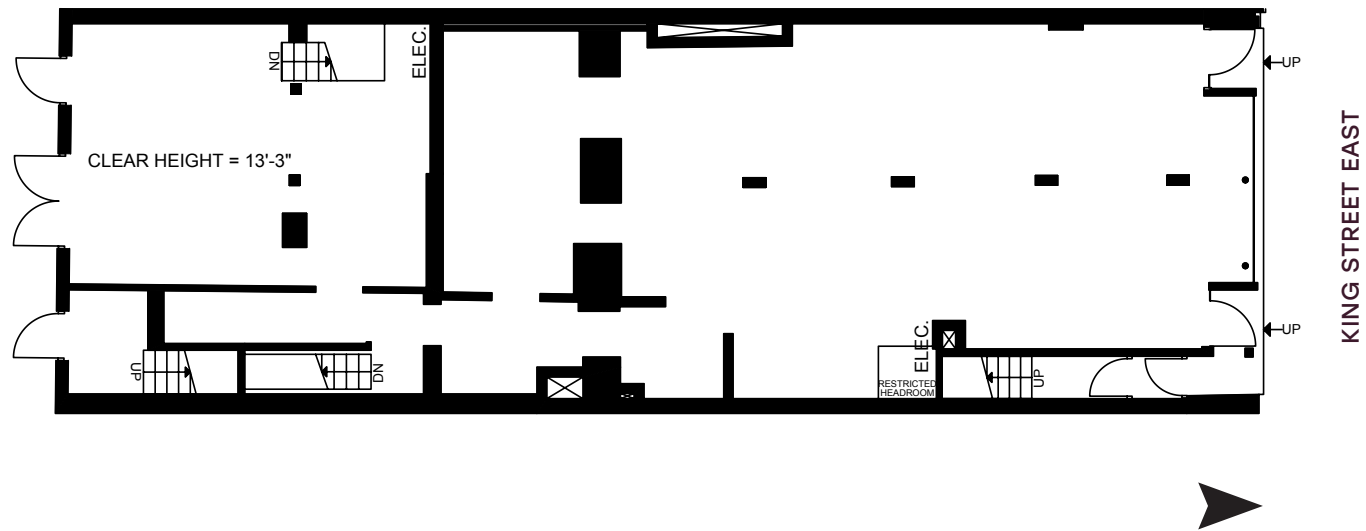


FLOOR PLANS

BASEMENT | 1,710 SF



GROUND | 2,038 SF



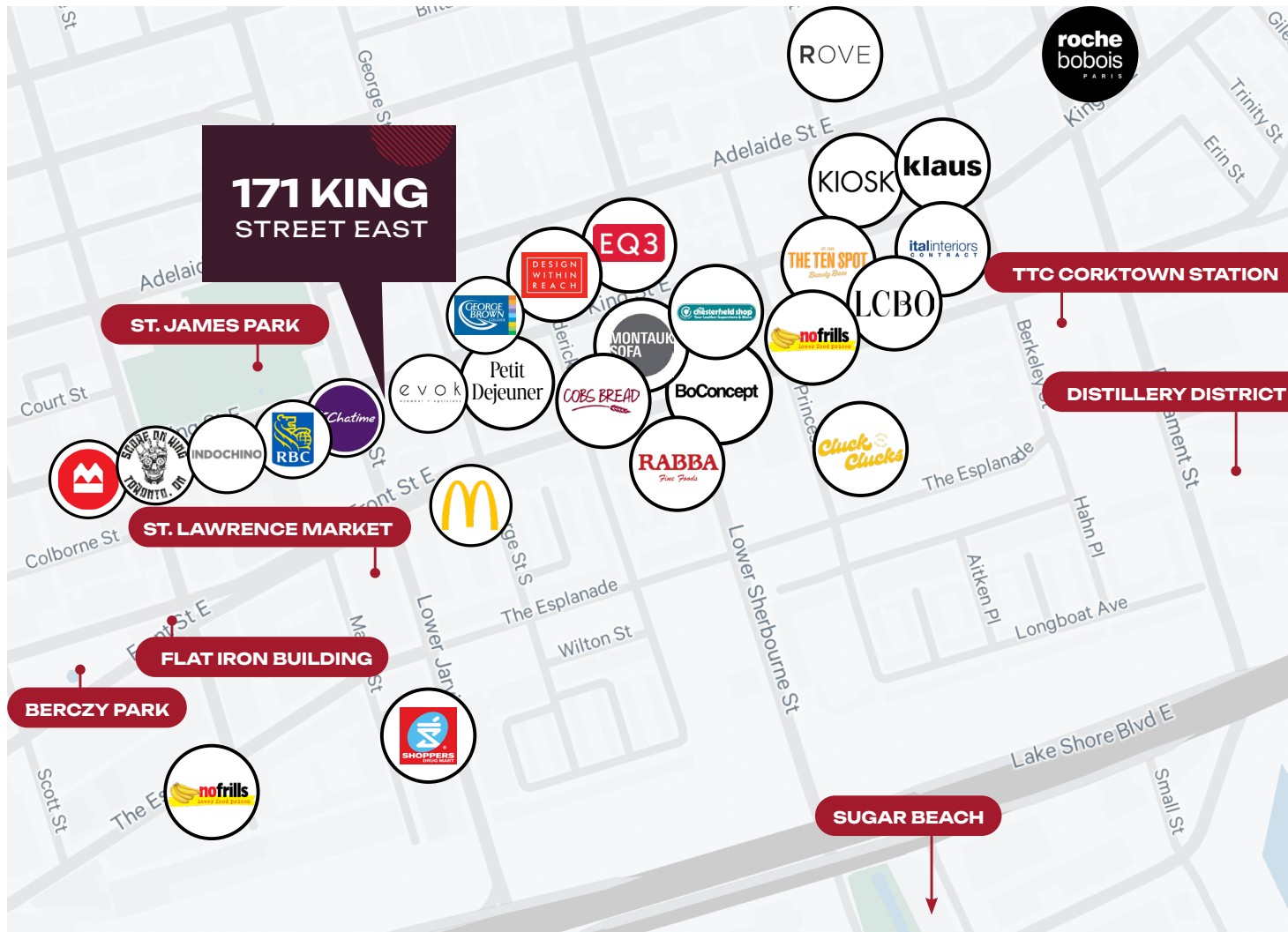
BASEMENT

THE LOCATION

KING EAST DESIGN DISTRICT | DOWNTOWN EAST

171 King Street East is located just east of the intersection of King and Jarvis in the heart of Toronto's King East Design District (KEDD). The KEDD is a neighbourhood in the heart of Old Toronto, encompassing many thriving businesses including numerous furniture design stores, galleries, restaurants, cafes and independent shops. This neighbourhood is home to many of Toronto's oldest and most beautiful heritage buildings.

171 King East benefits from its proximity to George Brown College downtown campus, St. Lawrence Market, St. James Park, Berczy Park, Distillery District and the Financial Core.



CONTACT

ARLIN MARKOWITZ*
Executive Vice President
416 815 2374
arlin.markowitz@cbre.com

ALEX EDMISON*
Senior Vice President
416 874 7266
alex.edmison@cbre.com

JACKSON TURNER**
Senior Vice President
416 815 2394
jackson.turner@cbre.com

EMILY EVERETT*
Sales Associate
647 943 4185
emily.everett@cbre.com

*Sales Representative **Broker

CBRE

This disclaimer shall apply to CBRE Limited, Real Estate Brokerage, and to all other divisions of the Corporation; to include all employees and independent contractors ("CBRE"). The information set out herein, including, without limitation, any projections, images, opinions, assumptions and estimates obtained from third parties (the "Information") has not been verified by CBRE, and CBRE does not represent, warrant or guarantee the accuracy, correctness and completeness of the Information. CBRE does not accept or assume any responsibility or liability, direct or consequential, for the Information or the recipient's reliance upon the Information. The recipient of the Information should take such steps as the recipient may deem necessary to verify the Information prior to placing any reliance upon the Information. The Information may change and any property described in the Information may be withdrawn from the market at any time without notice or obligation to the recipient from CBRE. CBRE and the CBRE logo are the service marks of CBRE Limited and/or its affiliated or related companies in other countries. All other marks displayed on this document are the property of their respective owners. All Rights Reserved.