

2355 YONGE

Ground Level Retail for Lease at Yonge and Eglinton | Toronto



2355 YONGE

Ground Level Retail for Lease at Yonge and Eglinton | Toronto

Size: 3,270 sq. ft. + basement storage

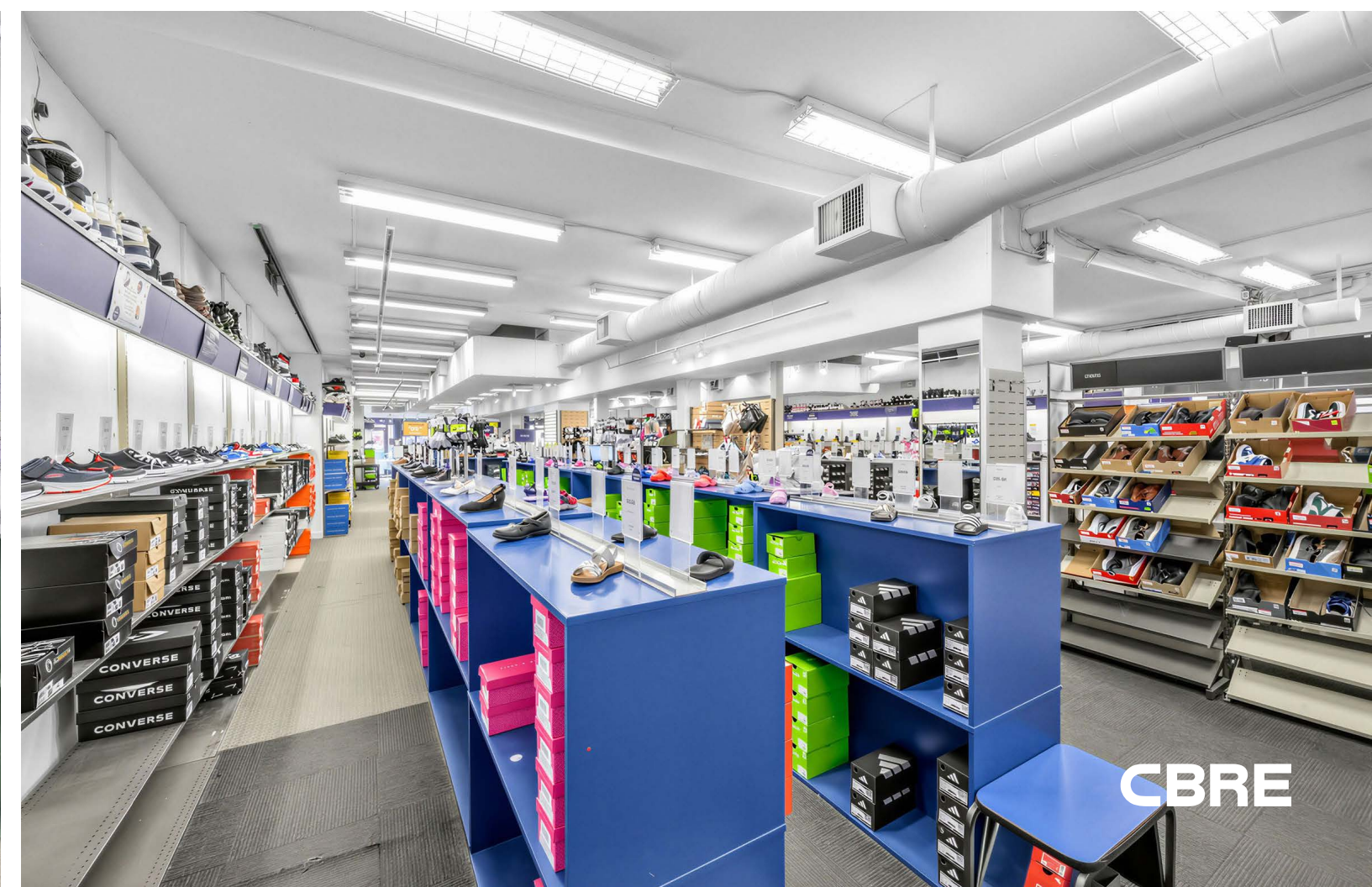
Net Rent: \$55.00 per sq. ft.

TMI: \$29.09 per sq. ft.

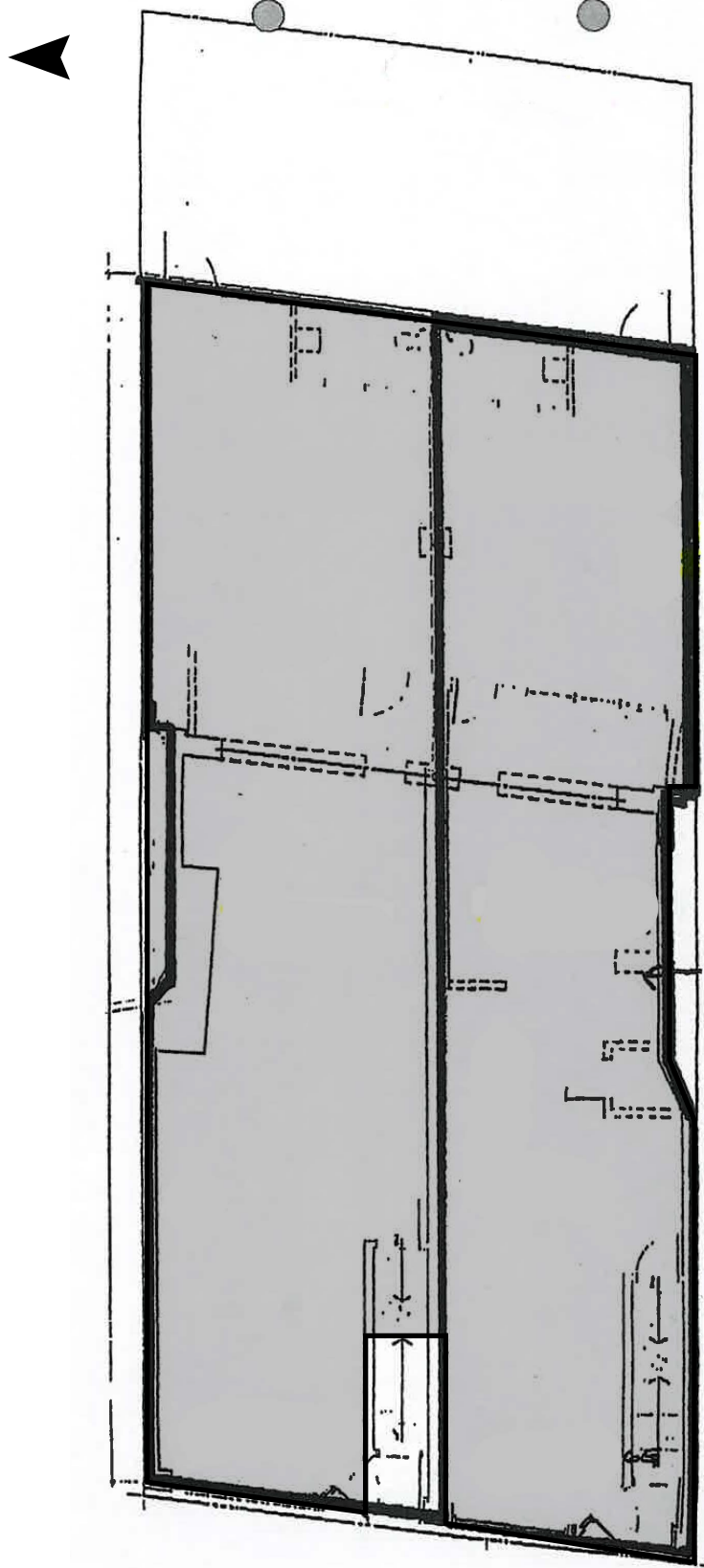
Available: April 15th, 2026

- Prime ground level space available for lease in the heart of the Yonge and Eglinton neighbourhood
- Excellent signage opportunity
- High vehicular/pedestrian traffic
- One minute walk away from Eglinton subway station
- Neighbouring retailers include Shoppers Drug Mart, PAI Uptown, Scotiabank, Dollarama, Stock T.C., RBC and all the shops and restaurants of the Yonge Eglinton Centre





Floor Plan



YONGE STREET



the neighbourhood

Yonge and Eglinton is a popular midtown hub for young professionals and families. It is home to plenty of bars, restaurants, boutiques and national retailers.

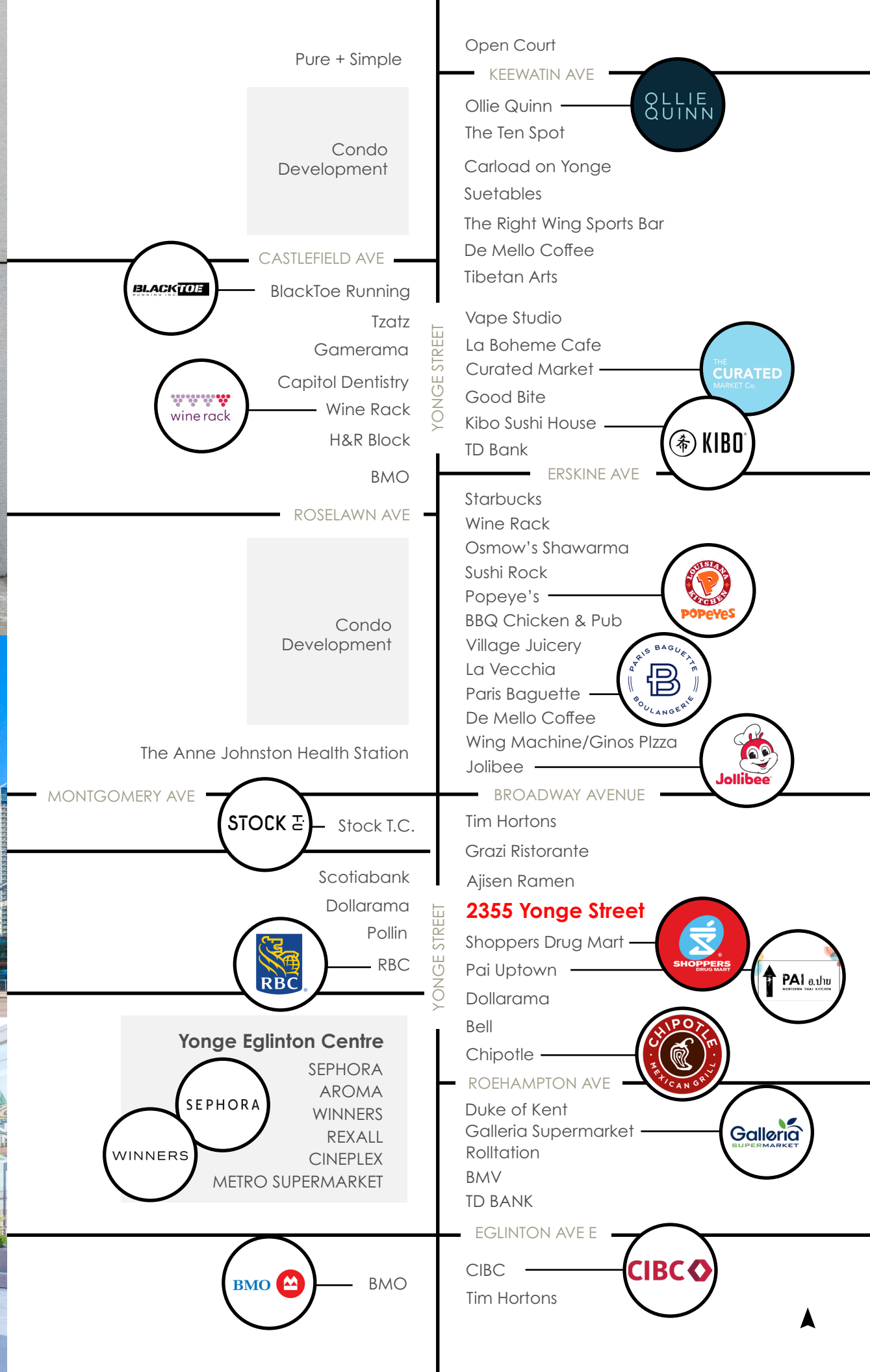
The area is surrounded by some of the most affluent residential neighbourhoods in Toronto. Developers continue to build in and around the streets that surround Yonge & Eglinton, adding density to any already bustling well-established community.

shop

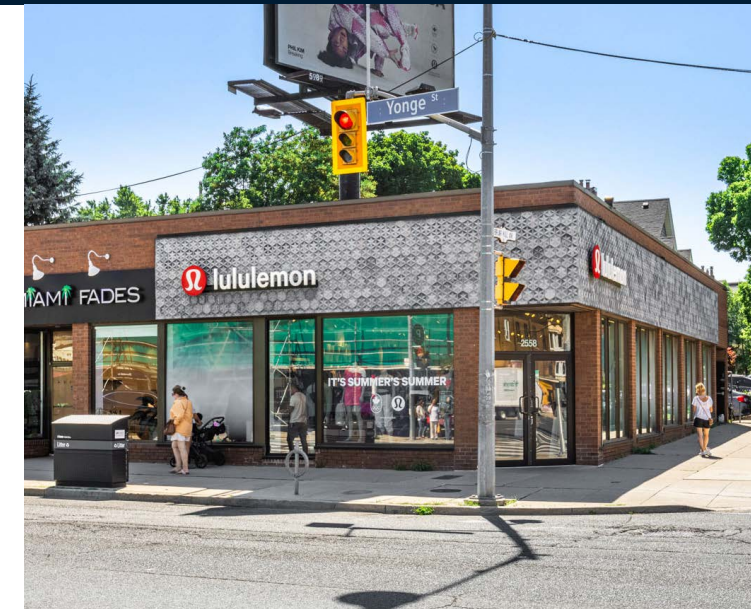
Yonge and Eglinton is one of the best shopping nodes within Toronto. People are drawn from neighbouring areas and from all over the city to shop at retailers such as Aesop, Sephora, Winners, BlackToe Running, Indigo, Swarovski, Lululemon and Benefit Cosmetics Boutique.

eat & drink

Some of Toronto's best restaurants and bars are found at Yonge & Eglinton. Little Sister, Stock T.C., TabÜlè, Fresh, PAI, Byblos Uptown and Paris Baguette are just a few of the popular restaurants in the neighbourhood.



Yonge and Eglinton





Contact

ARLIN MARKOWITZ*
Executive Vice President
416 815 2374
arlin.markowitz@cbre.com

ALEX EDMISON*
Senior Vice President
416 874 7266
alex.edmison@cbre.com

JACKSON TURNER**
Senior Vice President
416 815 2394
jackson.turner@cbre.com

EMILY EVERETT*
Sales Associate
647 943 4185
emily.everett@cbre.com

*Sales Representative **Broker

CBRE

This disclaimer shall apply to CBRE Limited, Real Estate Brokerage, and to all other divisions of the Corporation; to include all employees and independent contractors ("CBRE"). The information set out herein, including, without limitation, any projections, images, opinions, assumptions and estimates obtained from third parties (the "Information") has not been verified by CBRE, and CBRE does not represent, warrant or guarantee the accuracy, correctness and completeness of the Information. CBRE does not accept or assume any responsibility or liability, direct or consequential, for the Information or the recipient's reliance upon the Information. The recipient of the Information should take such steps as the recipient may deem necessary to verify the Information prior to placing any reliance upon the Information. The Information may change and any property described in the Information may be withdrawn from the market at any time without notice or obligation to the recipient from CBRE. CBRE and the CBRE logo are the service marks of CBRE Limited and/or its affiliated or related companies in other countries. All other marks displayed on this document are the property of their respective owners. All Rights Reserved.