

898 EGLINTON AVENUE *WEST*

Prime Retail for Lease Steps from Forest Hill Station



CBRE LIMITED, REAL ESTATE BROKERAGE | 145 KING STREET WEST | SUITE 1100 | TORONTO, ON M5H 1J8 | +1 416 362 2244 | WWW.CBRE.CA

CBRE

898 EGLINTON AVENUE WEST

Prime Retail for Lease Steps from Forest Hill Station

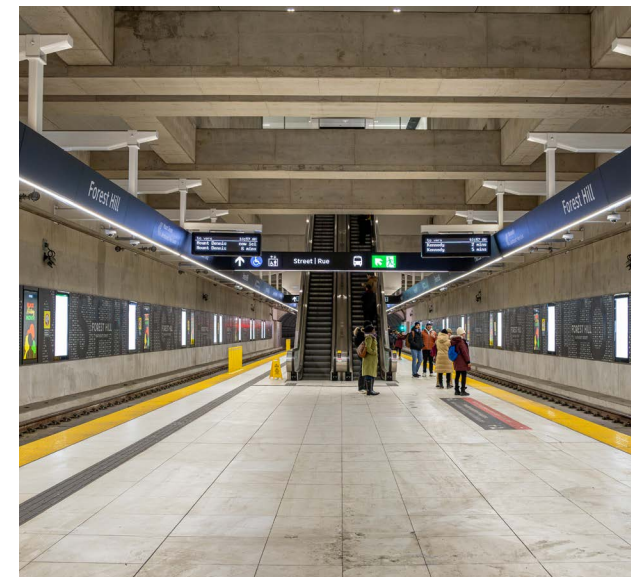
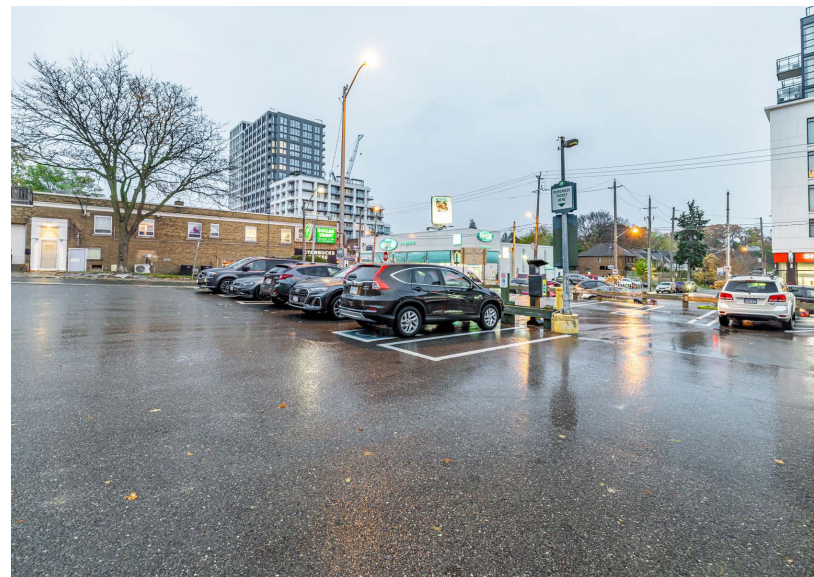
SIZE: 1,590 sq. ft. + basement

ASKING RENT: \$47.00 per sq. ft.

TMI: \$22.00 per sq. ft.

AVAILABLE: 90 days' notice

- Located steps from the intersection of Bathurst and Eglinton and an entrance to Forest Hill Station
- Central Forest Hill location in midtown Toronto
- Excellent frontage and exposure on Eglinton
- Neighbouring retailers include Tim Hortons, Starbucks, Shoppers Drug Mart, Dollarama, Rexall, St. Urbain Bagel and a wide variety of popular local restaurants and cafes



ADJACENT TO A LARGE GREEN P PUBLIC PARKING LOT

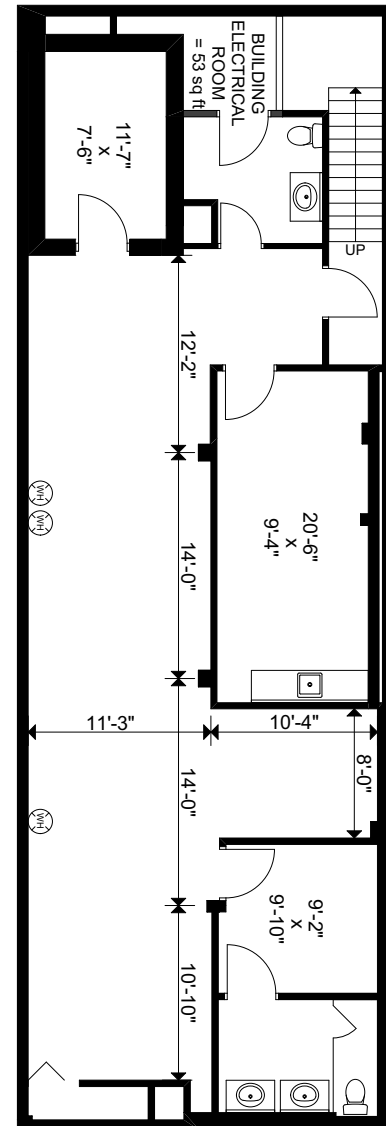
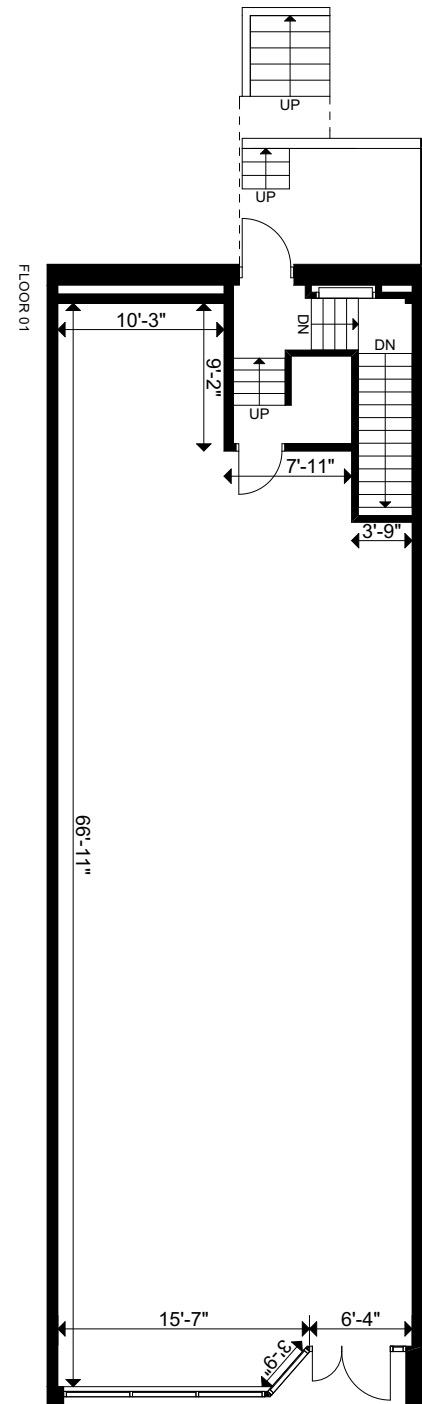


STEPS TO FOREST HILL STATION

FLOOR PLANS

GROUND
1,590 SF

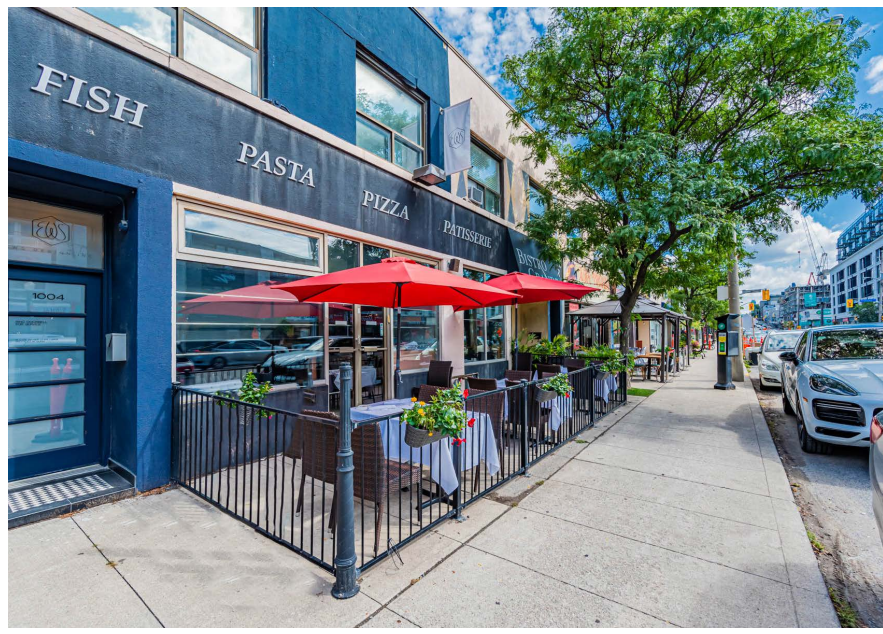
LOWER LEVEL
1,514 SF



EGLINTON AVE WEST



THE LOCATION





CONTACT

ARLIN MARKOWITZ*

Executive Vice President
416 815 2374
arlin.markowitz@cbre.com

ALEX EDMISON*

Senior Vice President
416 874 7266
alex.edmison@cbre.com

JACKSON TURNER**

Senior Vice President
416 815 2394
jackson.turner@cbre.com

EMILY EVERETT*

Sales Associate
647 943 4185
emily.everett@cbre.com

CBRE

*Sales Representative **Broker

This disclaimer shall apply to CBRE Limited, Real Estate Brokerage, and to all other divisions of the Corporation; to include all employees and independent contractors ("CBRE"). The information set out herein, including, without limitation, any projections, images, opinions, assumptions and estimates obtained from third parties (the "Information") has not been verified by CBRE, and CBRE does not represent, warrant or guarantee the accuracy, correctness and completeness of the Information. CBRE does not accept or assume any responsibility or liability, direct or consequential, for the Information or the recipient's reliance upon the Information. The recipient of the Information should take such steps as the recipient may deem necessary to verify the Information prior to placing any reliance upon the Information. The Information may change and any property described in the Information may be withdrawn from the market at any time without notice or obligation to the recipient from CBRE. CBRE and the CBRE logo are the service marks of CBRE Limited and/or its affiliated or related companies in other countries. All other marks displayed on this document are the property of their respective owners. All Rights Reserved.