

THE
CARVALO
ON COLLEGE

899 College Street

Prime Retail for Lease in the Heart of Toronto's Little Italy



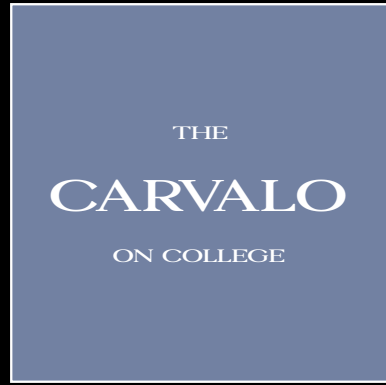
Geoffrey Smith*
Director, Retail & Corporate Accounts
+1 416 806 8212
geoffrey.smith@cbre.com

Katelyn Young
Sales Representative
+1 416 721 2615
katelyn.young@cbre.com

Emily Everett*
Sales Associate
647 943 4185
emily.everett@cbre.com

*Sales Representative | CBRE Limited, Brokerage

CBRE



Address: 899 College Street, Toronto

Unit Size: 3,330 sq. ft. (approximately)

Asking Rent: \$36.00 per sq. ft. + 2.5% annual escalations

TMI (2024): \$25.00 per sq. ft.



Newly constructed
ground floor opportunity
in Downtown Toronto



Shadow anchored
by national grocer

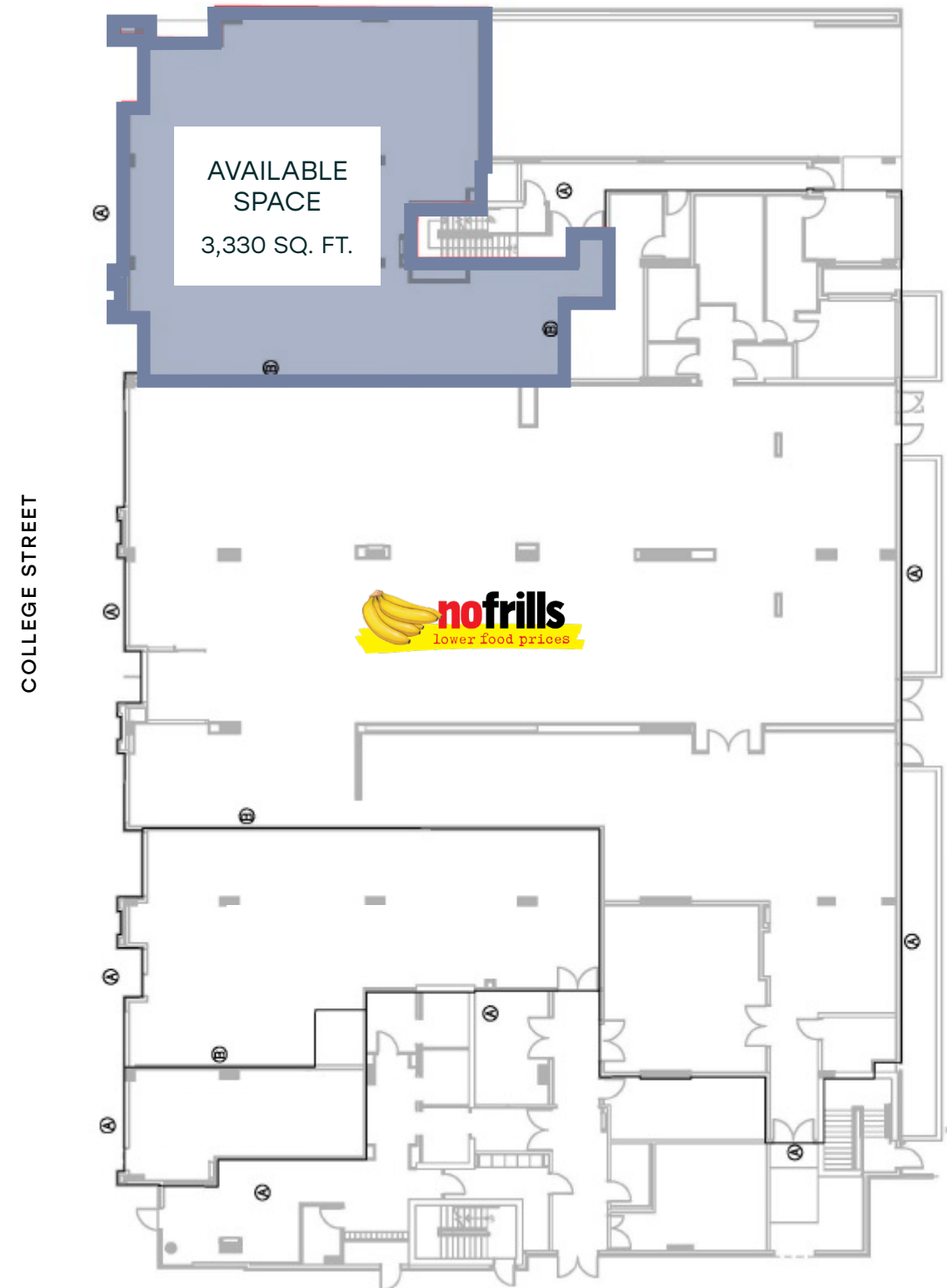


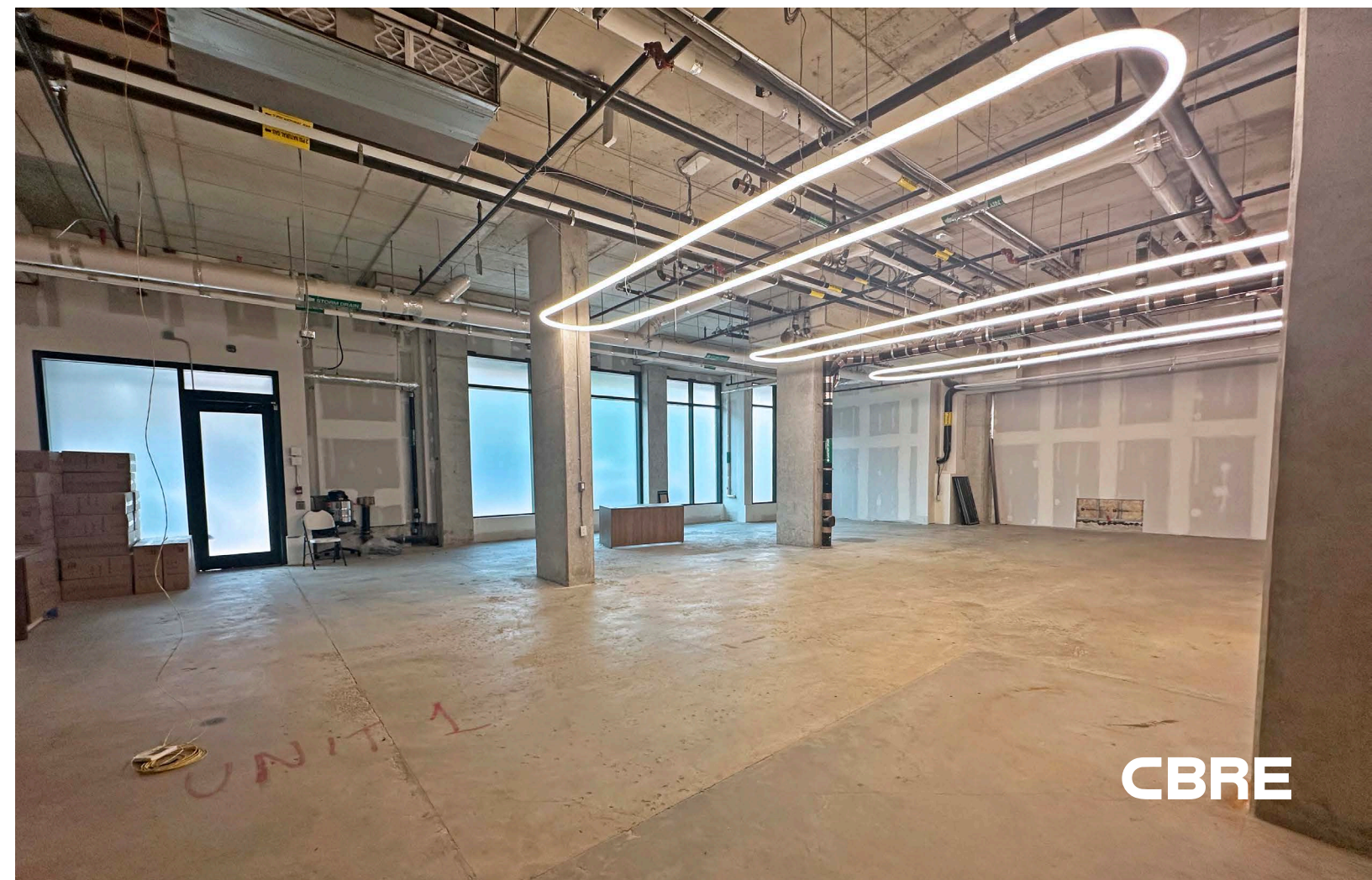
Unit in shell
condition



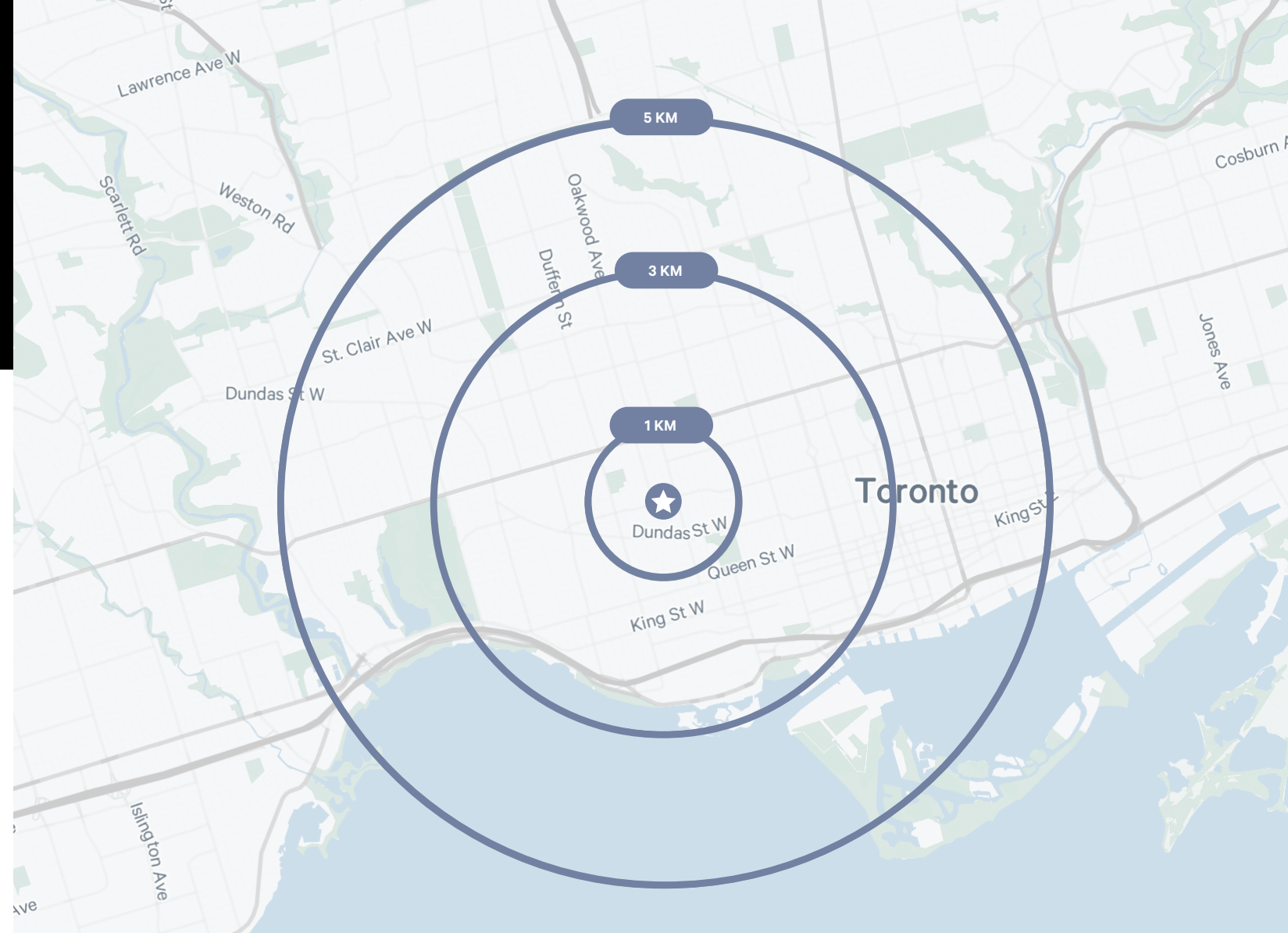
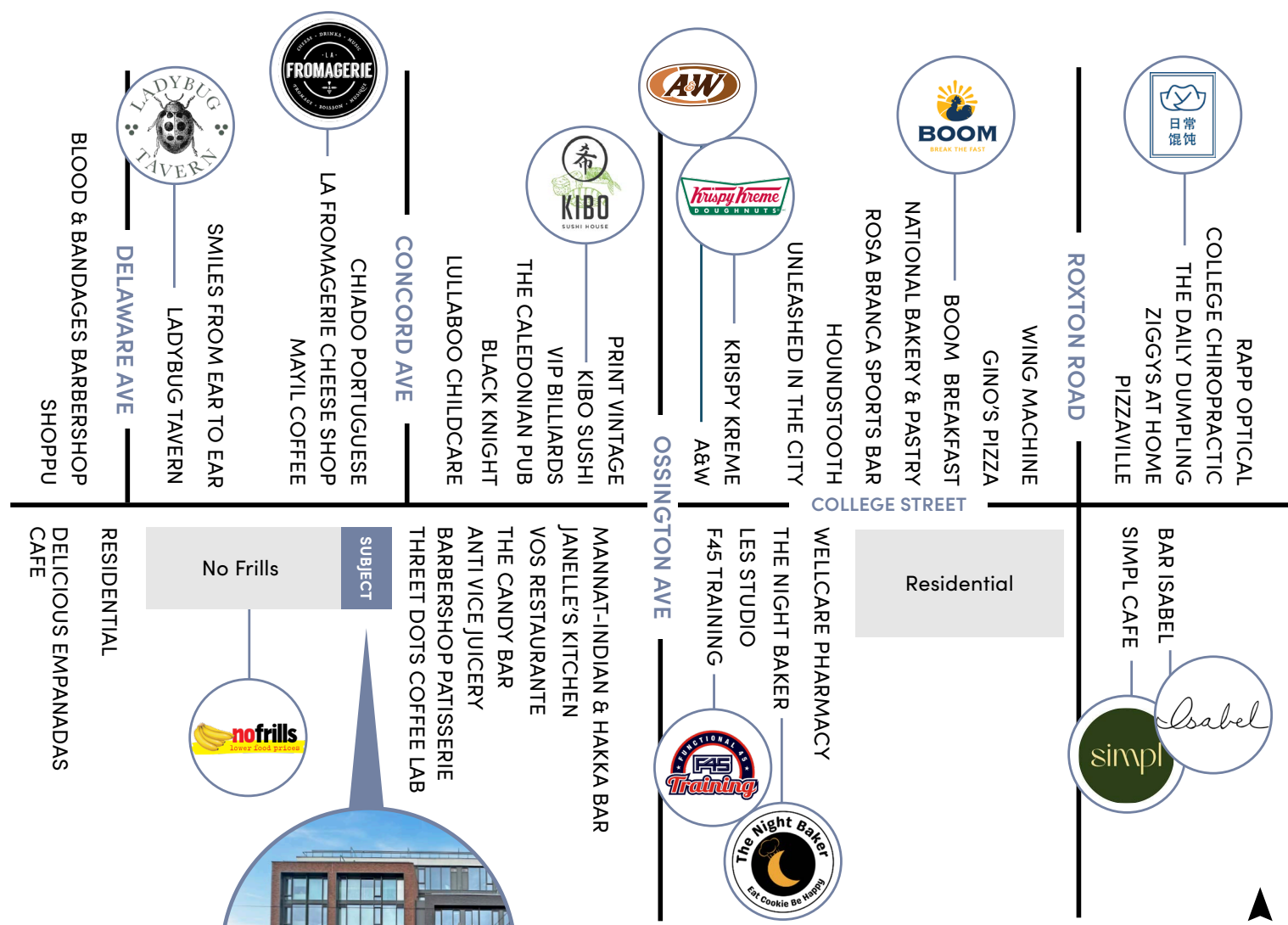
Located on the
College streetcar line

Floor Plan





Neighbouring Tenants



Demographics

1 KM		3 KM		5 KM	
13,958	\$134,356	157,280	\$132,674	361,686	\$148,327
Household	Average Income	Household	Average Income	Household	Average Income
29,104	1,082	366,505	10,489	1,010,620	26,085
Daytime Population	Businesses	Daytime Population	Businesses	Daytime Population	Businesses

Contact

Geoffrey Smith*

Director, Retail & Corporate Accounts

+1 416 806 8212

geoffrey.smith@cbre.com

Katelyn Young

Sales Representative

+1 416 721 2615

katelyn.young@cbre.com

Emily Everett*

Sales Associate

647 943 4185

emily.everett@cbre.com

*Sales Representative | CBRE Limited, Brokerage



This disclaimer shall apply to CBRE Limited, Real Estate Brokerage, and to all other divisions of the Corporation; to include all employees and independent contractors ("CBRE"). The information set out herein, including, without limitation, any projections, images, opinions, assumptions and estimates obtained from third parties (the "Information") has not been verified by CBRE, and CBRE does not represent, warrant or guarantee the accuracy, correctness and completeness of the Information. CBRE does not accept or assume any responsibility or liability, direct or consequential, for the Information or the recipient's reliance upon the Information. The recipient of the Information should take such steps as the recipient may deem necessary to verify the Information prior to placing any reliance upon the Information. The Information may change and any property described in the Information may be withdrawn from the market at any time without notice or obligation to the recipient from CBRE. CBRE and the CBRE logo are the service marks of CBRE Limited and/or its affiliated or related companies in other countries. All other marks displayed on this document are the property of their respective owners. All Rights Reserved. Mapping Sources: Canadian Mapping Services canadamapping@cbre.com; MapPoint, DMTI Spatial, Environics Analytics, Microsoft Bing, Google Earth