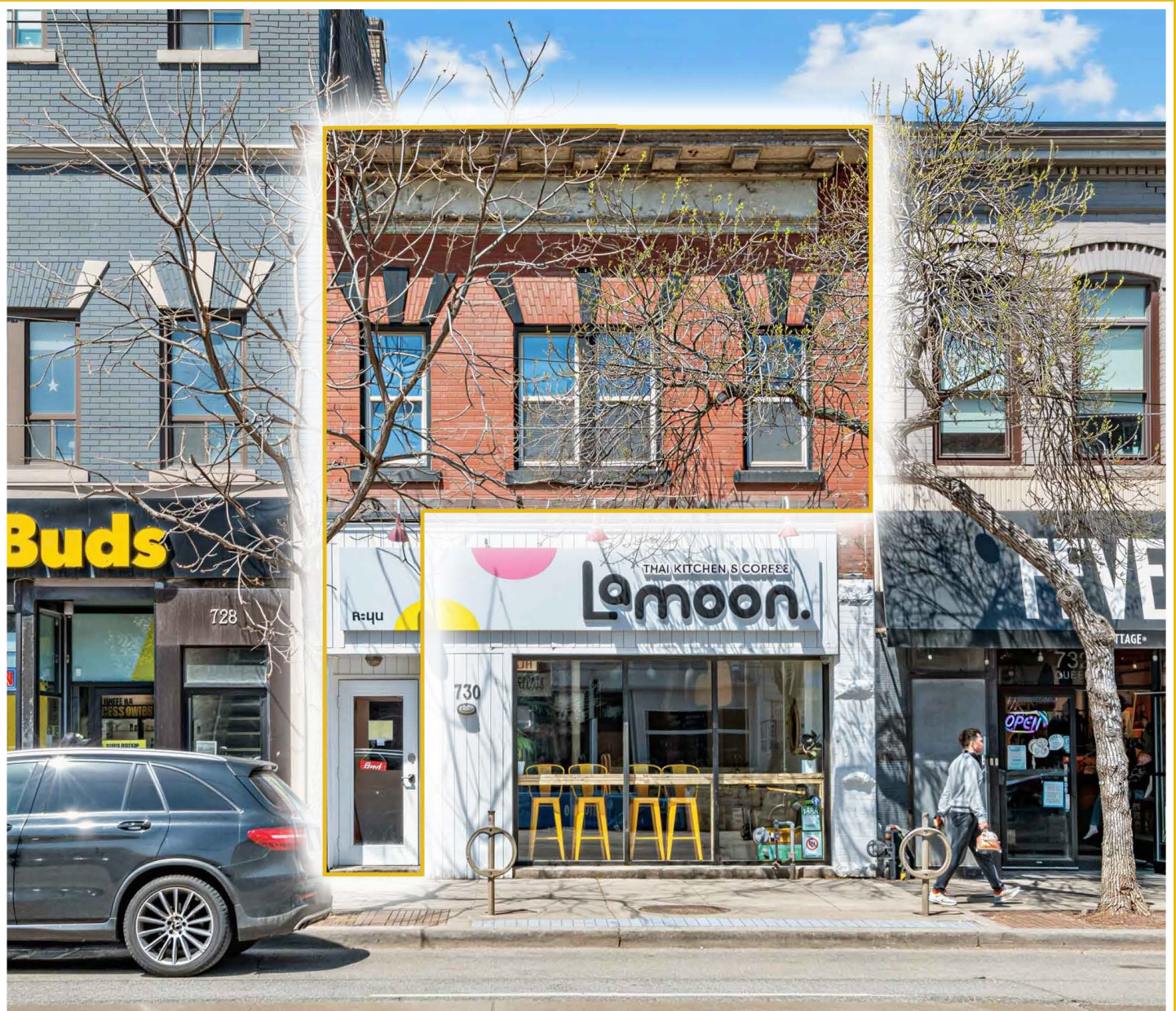


# 730 QUEEN STREET EAST

2nd Level Space for Lease In the Heart of Toronto's Riverside District



CBRE

# 730 QUEEN STREET EAST

## 2nd Level Space for Lease

<b>Size</b>	900 sq. ft.
<b>Net Rent</b>	\$2,500 / month
<b>TMI</b>	\$1,000 / month
<b>Available</b>	Immediately

- Rare second level retail available in the heart of Toronto's popular Riverside District
- Five minute walk to the future Riverside-Leslieville subway station
- Seconds from the DVP
- Neighbouring retailers: The Broadview Hotel, COPS Donuts, The Opera House, Dollarama, LCBO, BMO, La Carnita and many more



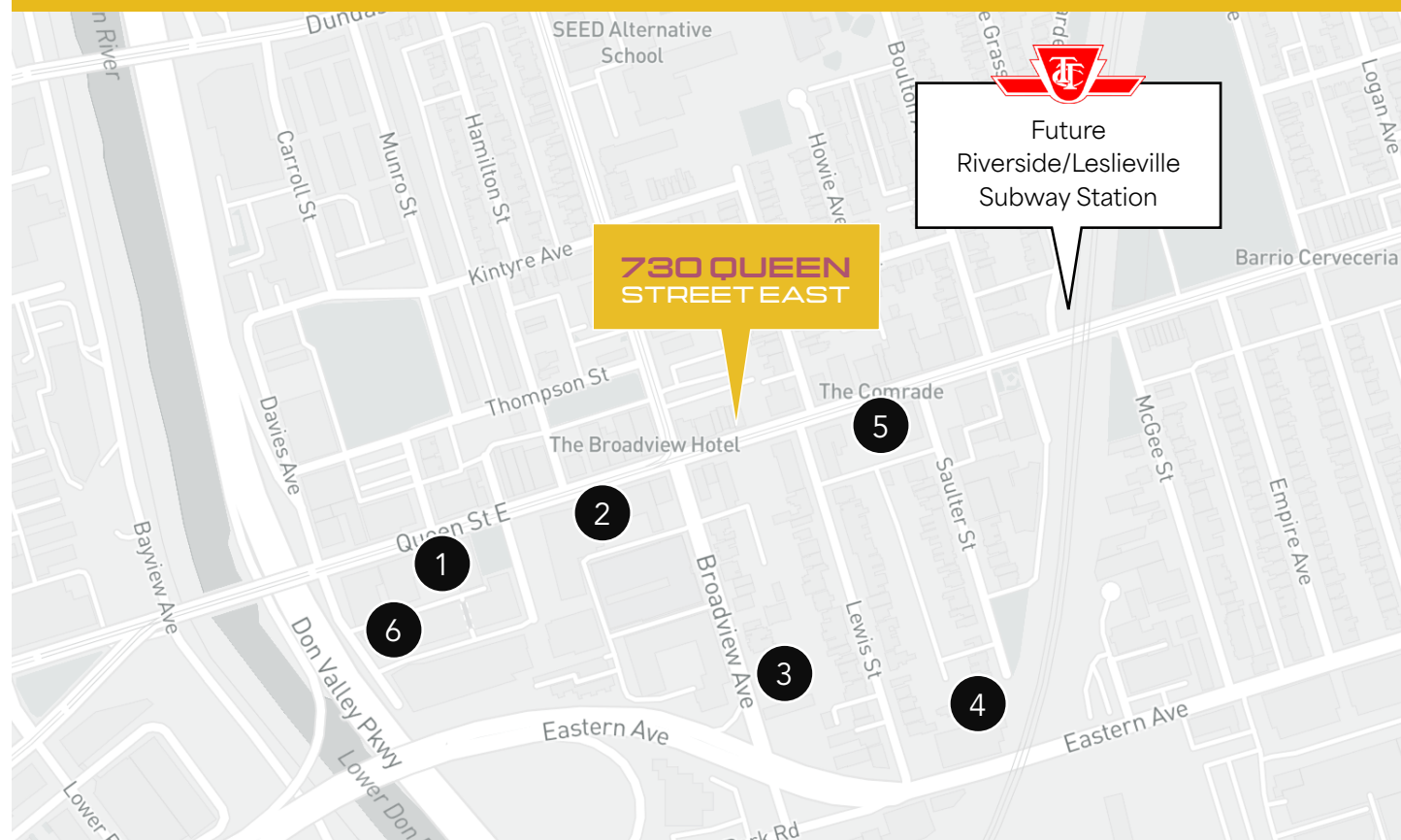
# Interiors - 2nd Level



# The Location | Riverside District

730 Queen Street East is located within the heart of Riverside District, a popular east-end neighbourhood spanning 10 blocks of Queen Street East from the Don Valley Parkway to De Grassi Street. The area is rich in history and boasts over 100 restaurants, bars, shops and attractions. Popular neighbourhood spots include The Broadview Hotel, The Opera House, White Lily Diner and many more!

## Neighbouring Development Activity

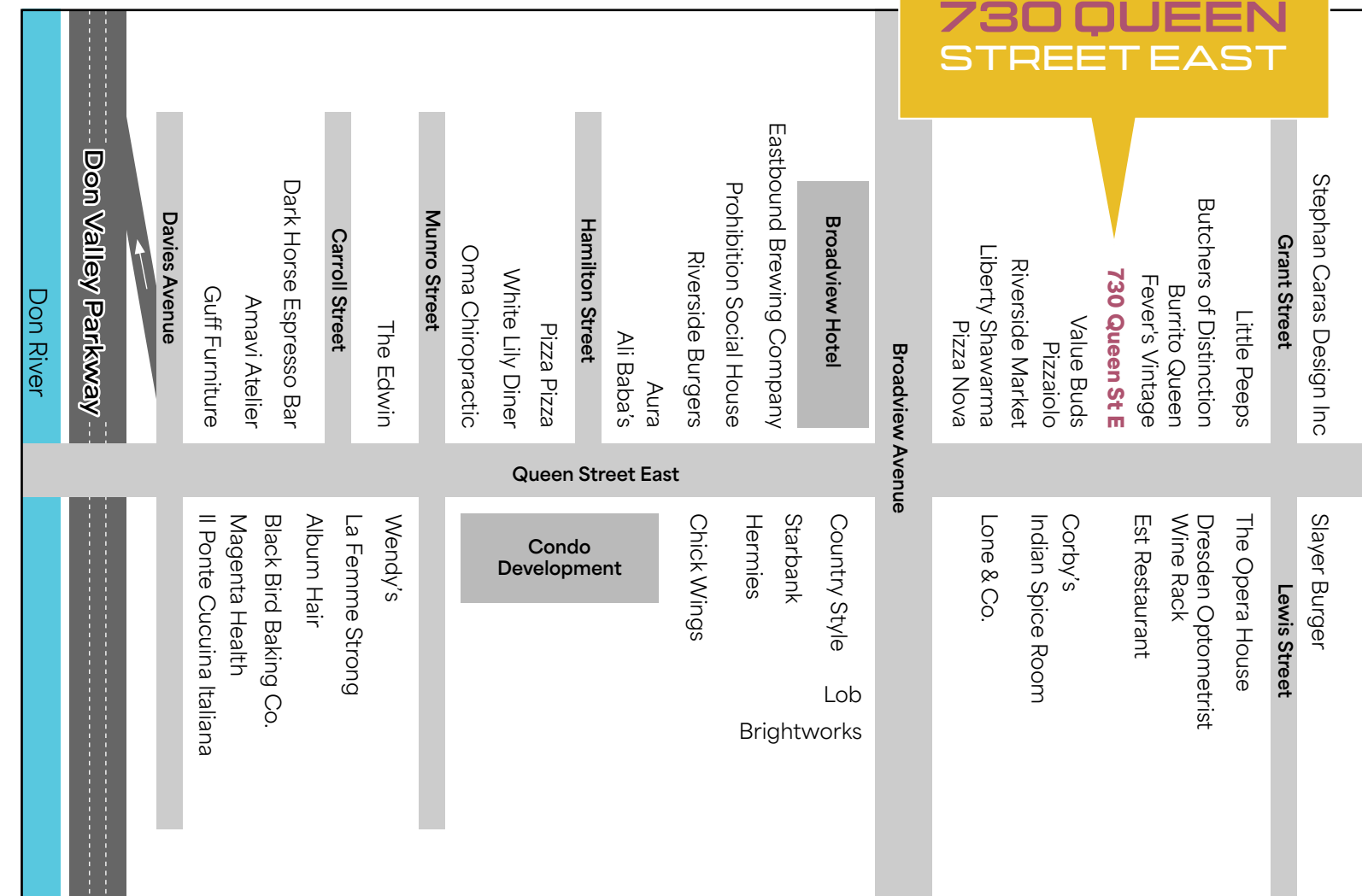


- |   |   |
|---|---|
| <p><b>1</b> 641 Queen St East<br/>Pre-Construction<br/># of Units: 94</p> <p><b>2</b> 685 Queen St East<br/>Under Construction<br/># of Units: 26</p> <p><b>3</b> 21 Broadview<br/>Pre-Construction<br/># of Units: 340</p> | <p><b>4</b> 356 Eastern Avenue<br/>Pre-Construction<br/># of Units: 140</p> <p><b>5</b> Biblio Lofts<br/>Under Construction<br/># of Units: 28</p> <p><b>6</b> Riverside Square<br/>Recently Complete<br/># of Units: 913</p> |
|---|---|

**1,541  
New Units**



## 730 QUEEN STREET EAST





## CONTACT

---

**Arlin Markowitz\***  
Executive Vice President  
416 815 2374  
arlin.markowitz@cbre.com

**Alex Edmison\***  
Senior Vice President  
416 874 7266  
alex.edmison@cbre.com

**Jackson Turner\*\***  
Senior Vice President  
416 815 2394  
jackson.turner@cbre.com

**Emily Everett\***  
Sales Associate  
647 943 4185  
emily.everett@cbre.com

\*Sales Representative \*\*Broker

**CBRE**

This disclaimer shall apply to CBRE Limited, Real Estate Brokerage, and to all other divisions of the Corporation; to include all employees and independent contractors ("CBRE"). The information set out herein, including, without limitation, any projections, images, opinions, assumptions and estimates obtained from third parties (the "Information") has not been verified by CBRE, and CBRE does not represent, warrant or guarantee the accuracy, correctness and completeness of the Information. CBRE does not accept or assume any responsibility or liability, direct or consequential, for the Information or the recipient's reliance upon the Information. The recipient of the Information should take such steps as the recipient may deem necessary to verify the Information prior to placing any reliance upon the Information. The Information may change and any property described in the Information may be withdrawn from the market at any time without notice or obligation to the recipient from CBRE. CBRE and the CBRE logo are the service marks of CBRE Limited and/or its affiliated or related companies in other countries. All other marks displayed on this document are the property of their respective owners. All Rights Reserved.